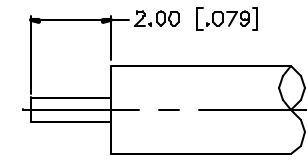
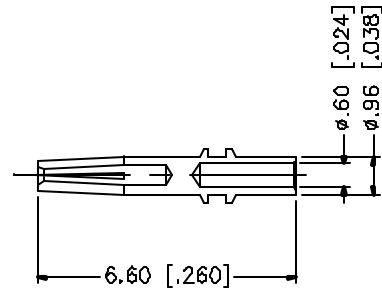
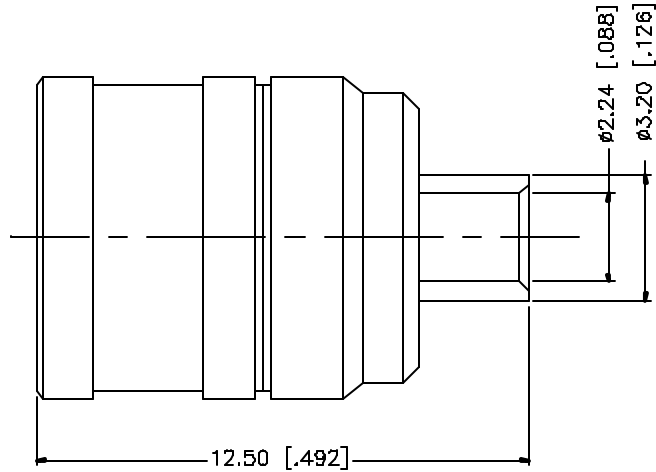


REV.	DATE	DESCRIPTION
A	03/27/05	UPDATE DRAWING FORMAT



RECOMMENDED  
CABLE STRIPPING DIM'S

8					<p>UNLESS OTHERWISE SPECIFIED DIMENSIONS ARE IN MILLIMETERS. DIMENSIONS IN ( ) ARE IN INCHES AND FOR CUSTOMER REFERENCE ONLY.</p> <p>UNLESS OTHERWISE SPECIFIED TOLERANCES FOR MILLIMETERS ARE:  0.5 - 8mm ± 0.20mm  8 - 30mm ± 0.40mm  30 - 120mm ± 0.50mm</p> <p>UNLESS OTHERWISE SPECIFIED TOLERANCES FOR INCHES ARE:  .020 - .315 = ± 0.007"  .315 - 1.180 = ± 0.015"  1.180 - 4.724 = ± 0.020"</p> <p>DO NOT SCALE DRAWING</p>	APPROVALS	DATE	<h1 style="color: blue; margin: 0;">Amphenol Connex</h1>		
7				DRAWN		G.R.S.	03/27/05		<p>PART DESCRIPTION</p> <h2 style="text-align: center; margin: 0;">SMB DIRECT SOLDER PLUG (FOR .085", .086")</h2>	
6				CHECKED						
5				ISSUED						
4						SHEET	1 OF 1	<p>PART NO.</p> <h2 style="text-align: center; margin: 0;">142212</h2>		
3	CONTACT PIN	BRASS	GOLD	1		CAD FILE			<p>DWG. NO.</p> <p>142212.DWG</p>	
2	INSULATOR	TEFLON	NATURAL	1		C:/142/142212.DWG		REV. A		SIZE A
1	BODY	BRASS	GOLD	1						
	DESCRIPTION	MATERIAL	FINISH	QTY						