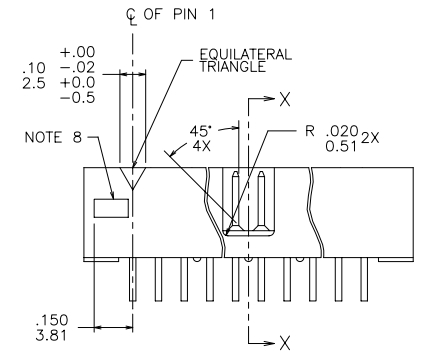
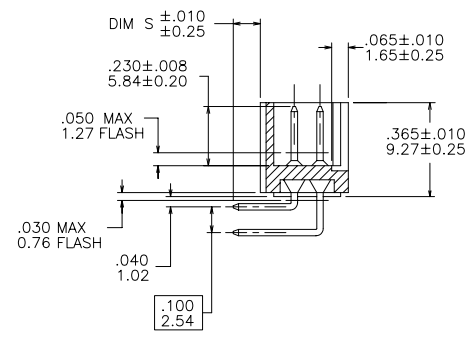
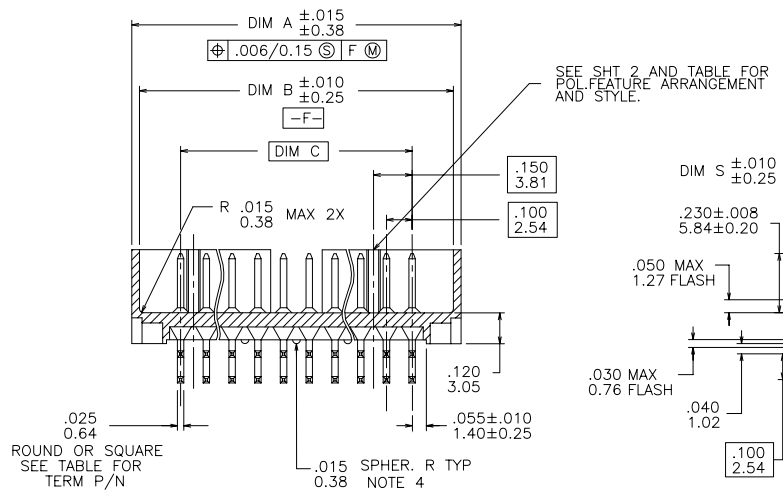
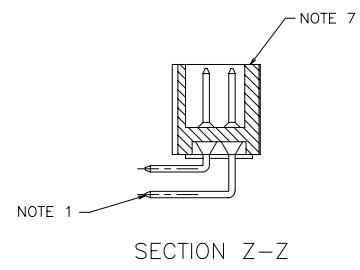
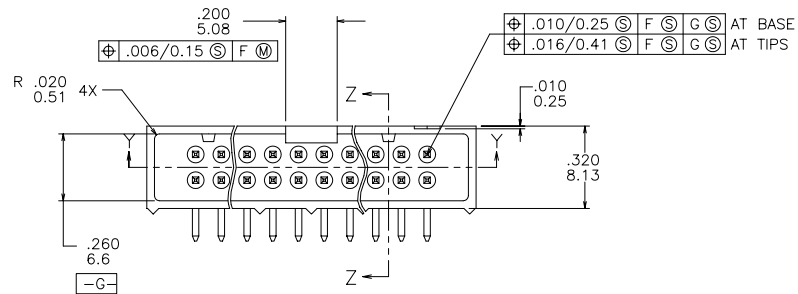


PRODUCT NO.
SEE TABLE



SECTION Y-Y

SECTION X-X



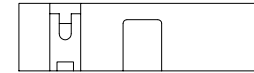
Copyright FCI

mat'l. code		surface ISO 1302 ✓		tolerance ISO 406 ISO 1101		projection INCH/MM		product family QKE. HDR.	
ltr	ecn no	dr	date	tolerances unless otherwise specified					
B	v81471	EPK	10/27/98	angles	.XX±.01/.3		title		
C	M05-0167	ERE	7/23/05	linear	.XXX±.005/.13		HEADER, QUICKIE, SLIM LINE		
D	M07-0116	AGS	2/25/07	0°±2'	.XXXX±.0020/.051		RIGHT ANGLE, 4 WALL		
				dr	M. CORNMAN	8/6/90	scale 2:1		dwg no
				enr	M. SMYK	8/6/90	sheet 1 of 2		size
				chr	M. SMYK	8/6/90	78295		A3
				appd	M. SMYK	8/6/90	type Product Customer Drawing		
sheet index	revision sheet	D	D						
		1	2						

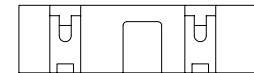
PRODUCT NUMBER NOTE 6,10	POS	DIM A	DIM B	DIM C	POS
78295-X02	2 X 5	.78/19.8	.72/18.3	.400/10.16	A
-X14	2 X 7	.98/24.9	.92/23.4	.600/15.24	B
-X16	2 X 8	1.08/27.9	1.02/25.9	.700/17.78	C
-X20	2 X 10	1.28/32.5	1.22/31.0	.900/22.86	
-X24	2 X 12	1.48/37.6	1.42/36.1	1.100/27.94	
-X26	2 X 13	1.58/40.1	1.52/38.6	1.200/30.48	
-X30	2 X 15	1.78/45.2	1.72/43.7	1.400/35.56	
-X34	2 X 17	1.98/50.3	1.92/48.8	1.600/40.64	
-X40	2 X 20	2.28/57.9	2.22/56.4	1.900/48.26	
-X44	2 X 22	2.48/63.0	2.42/61.4	2.100/53.34	
-X50	2 X 25	2.78/70.6	2.72/69.1	2.400/60.96	
78295-X60	2 X 30	3.28/83.3	3.22/81.8	2.900/73.66	C



2 X 5
STYLE A



2 X 7
STYLE B



2 X 8 THUR 2 X 30
STYLE C

X	TERMINAL PLATING	DIM S ±.01/0.3	TERMINAL TYPE
-0XX	30μ"/.76μ Au OVER 50μ"/1.27μ Ni	.105/2.67	RD
-1XX	30μ"/.76μ GXT/GOLD FLASH	.105/2.67	
-2XX	30μ"/.76μ Au OVER 50μ"/1.27μ Ni	.150/3.81	
-3XX	30μ"/.76μ GXT/GOLD FLASH	.150/3.81	RD
-4XX	30μ"/.76μ Au OVER 50μ"/1.27μ Ni	.105/2.67	SQ
-5XX	30μ"/.76μ GXT/GOLD FLASH	.105/2.67	
-6XX	30μ"/.76μ Au OVER 50μ"/1.27μ Ni	.150/3.81	
-7XX	30μ"/.76μ GXT/GOLD FLASH	.150/3.81	
-8XX	15μ"/.38μ Au OVER 50μ"/1.27μ Ni	.150/3.81	
-9XX	15μ"/.38μ GXT OVER 50μ"/1.27μ Ni	.105/2.67	SQ

NOTES

- ① SAME PIN POSITION TOLERANCE APPLIES TO BOTH ENDS OF EACH TERMINAL.
- ② MOLDING MATERIAL : 30% GLASS-FILLED POLYESTER
FLAME RETARDANT PER UL 94VE-0. COLOR : BLACK
3. 1° MAX DRAFT PERMISSIBLE ON ALL SURFACES.
4. 4 POUNDS/1.8 KILOGRAMS MIN TERMINAL PULL-OUT FORCE.
5. TERMINAL MATERIAL : PHOSPHOR BRONZE
- ⑥ A. PART NUMBERS HAVING AN "R" FOLLOWING THE 8 DIGIT P/N HAVE A RETENTION FEATURE. (EX. 69155-010 R) LOCATION IS MANUFACTURER'S OPTION.
B. CONNECTORS WITH RETENTION AND ROUND PINS HAVE A 15 Lb./6.8 Kg. MAX INSERTION AND .25 Lb./11 Kg. MIN RETENTION FORCE WHEN USED IN A .035/0.89±.003/0.08 DIA HOLE AND .062/1.58 THICK PCB BOARD.
C. CONNECTORS WITH RETENTION AND SQUARE PINS HAVE A 15 Lb./6.8 Kg. MAX INSERTION AND .50 Lb./23 Kg. MIN RETENTION FORCE WHEN USED IN A .040/1.02±.003/0.08 DIA HOLE AND .062/1.58 THICK PCB BOARD.
- ⑦ MOLDED-IN KEYS ARE MANUFACTURER'S OPTION.
IF KEY NOT MOLDED-IN, USE HEADER POLARIZED KEY.
- ⑧ APPROXIMATE LOGO LOCATION
- ⑨ ADD "LF" SUFFIX AT THE END OF PART NUMBER FOR LEAD FREE OPTION
- ⑩ THIS PRODUCT MEETS EUROPEAN UNION DIRECTIVES AND OTHER COUNTRY REGULATION AS DESCRIBED IN GS-22-008.
11. THE HOUSING WILL WITHSTAND EXPOSURE TO 260°C PEAK TEMPERATURE FOR 15 SECONDS IN A WAVE SOLDER APPLICATION WITH A 1.5mm MINIMUM THICK CIRCUIT BOARD. SEE APPLICATION NOTES/PROCEDURES IF THEY ARE AVAILABLE.

mat'l. code		surface ISO 1302 ✓		tolerance ISO 406 ISO 1101		projection INCH/MM		product family QKE. HDR.	
ltr	ecn	no	dr	date		tolerances unless otherwise specified		title	
D						angles	linear	HEADER, QUICKIE, SLIM LINE RIGHT ANGLE, 4 WALL	
						0°±2'	.XX±.01/.3 .XXX±.005/.13 .XXXX±.0020/.051	scale 2:1	
						dr	M. CORNMAN	8/6/90	dwg no
						enrg	M. SMYK	8/6/90	sheet2 of 2
						chr	M. SMYK	8/6/90	size
						appd	M. SMYK	8/6/90	A3
sheet index		revision sheet						type Product Customer Drawing	