

4

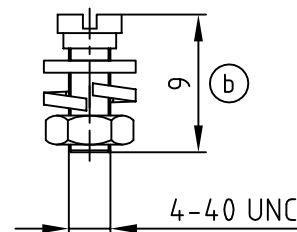
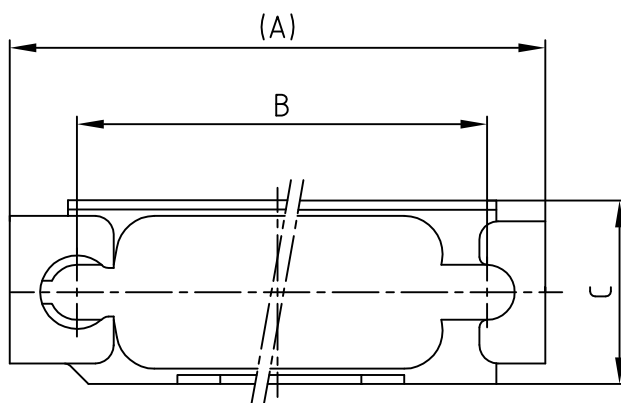
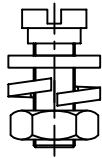
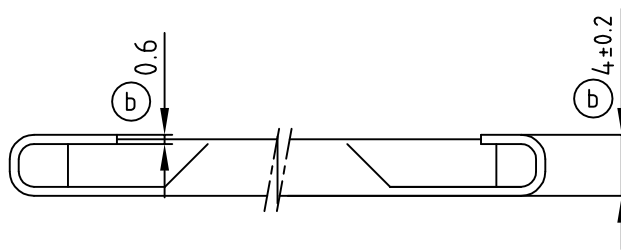
3

2

1

used for:

D-SUB



(b) (b) (b)

No. of Pos.	A	B	C	Part No.
9	35.0	27.4	12.0	160X10689X
15	43.3	35.7	11.5	160X10699X
25	57.0	49.4	12.0	160X10709X
37	74.4	65.9	12.0	160X10719X
50	72.0	63.5	15.0	160X10729X

A set consists of:

- 1 frame
- 2 screws UNC 4-40
- 2 washers
- 2 spring ring (b)
- 2 nuts UNC 4-40

Material and plating:

- frame - stainless steel
- screws - steel; 5-7 μ Zn thickfilm passivated
- washers - steel; 5-7 μ Zn thickfilm passivated
- (b) spring ring - steel; 5-7 μ Zn thickfilm passivated
- nuts - steel; 5-7 μ Zn thickfilm passivated

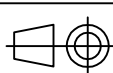
Directive 2002/95/EC
"RoHS"
Compliant

THIS DRAWING MAY NOT BE COPIED OR
REPRODUCED IN ANY WAY, AND MAY NOT
BE PASSED ON TO A THIRD PARTY WITHOUT
WRITTEN PERMISSION.

OWNERSHIP AND COPYRIGHT OF CONEC GmbH
DO NOT ALTER CAD DRAWING BY HAND

9 x b	Ä 3055	16.07.2008	Sonne
a	Origin		
rev.	description	date	name

tolerance (b)
DIN ISO 2768-m



scale: 2:1
material: SEE NOTES

1995	date	name
drawn	18.07.	Barcinski
appd.	18.07.	Mickenbecker
norm		
d-old		

title:
Slide lock Typ 4
with locking bolt
9 - 50 pos.

dwg no: AutoCAD/REL.10
16V11M6A
DIN-A
4
sh: 1/1

CONEC[®]

part no: SEE TABLE

4

3

2

1