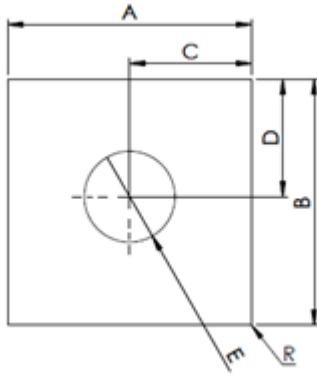


Die Cut PCM Rectifier Bridge



Features

Low thermal resistance
Natural tack

Applications

Rectifier Bridge

Properties

- ◆ REACH Compliant
- ◆ RoHS Compliant

Property	PC99	Unit	Tolerance	Test Method
Colour	Yellow	-	-	Visual
Thickness	0.06	mm	-	ASTM D374
Phase Change Softening Point	52	°C	-	-
Specific Gravity	2.35	g/cm ³	±0.2	ASTM D792
Working Temperature	-40 to 200	°C	-	-
Surface Resistance	>10 ¹²	Ohm-cm	-	ASTM D257
Elongation	5	%	±13	ASTM D412
Tensile Strength	0.1	Kgf/cm ²	-	ASTM D412
Standard Shape	-	Sheets 320-320mm	-	-
Thermal Resistance 30psi	0.1	°c-cm ² /w	-	-

Dimensions / mm							Ordering part number
A	B	C	D	E	F	G	
25.4	25.4	12.70	12.7	4.8			DC0036/01 - XXX - T
28.5	28.5	14.20	14.2	5.3			DC0036/02 - XXX - T
31.80	31.8	15.9	15.9	3.6			DC0036/03 - XXX - T
52.3	52.3	26.2	26.2	9.5			DC0036/04 - XXX - T