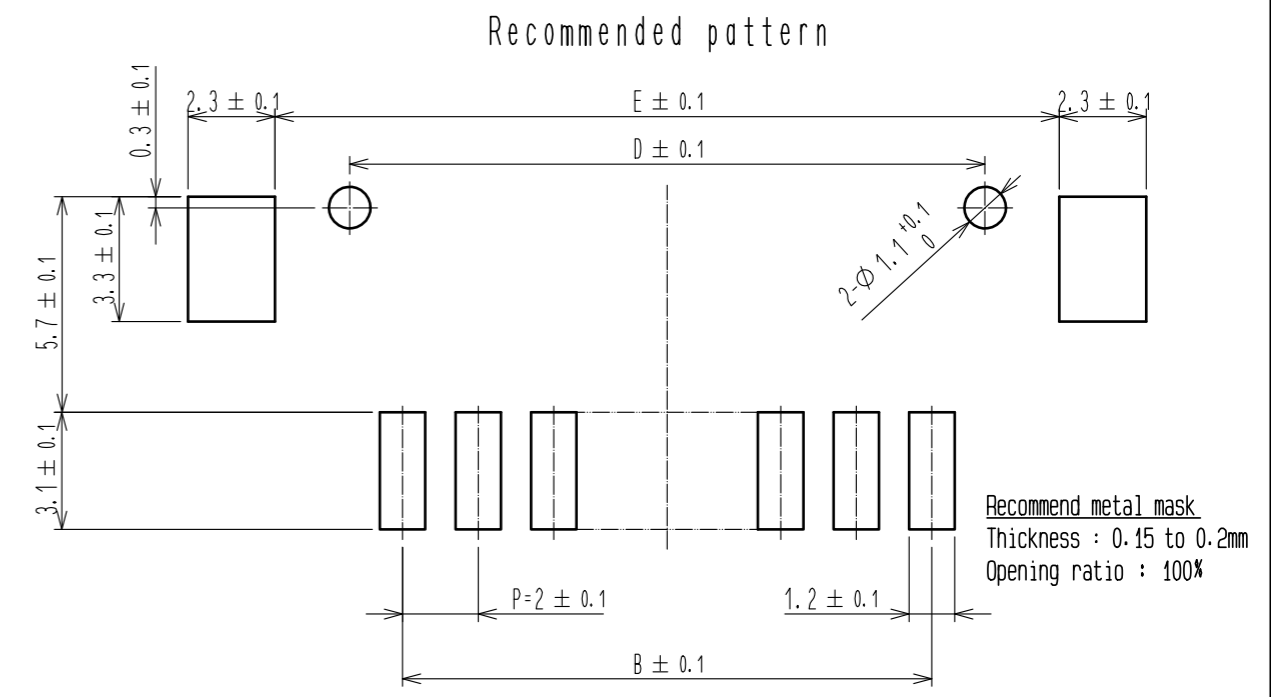
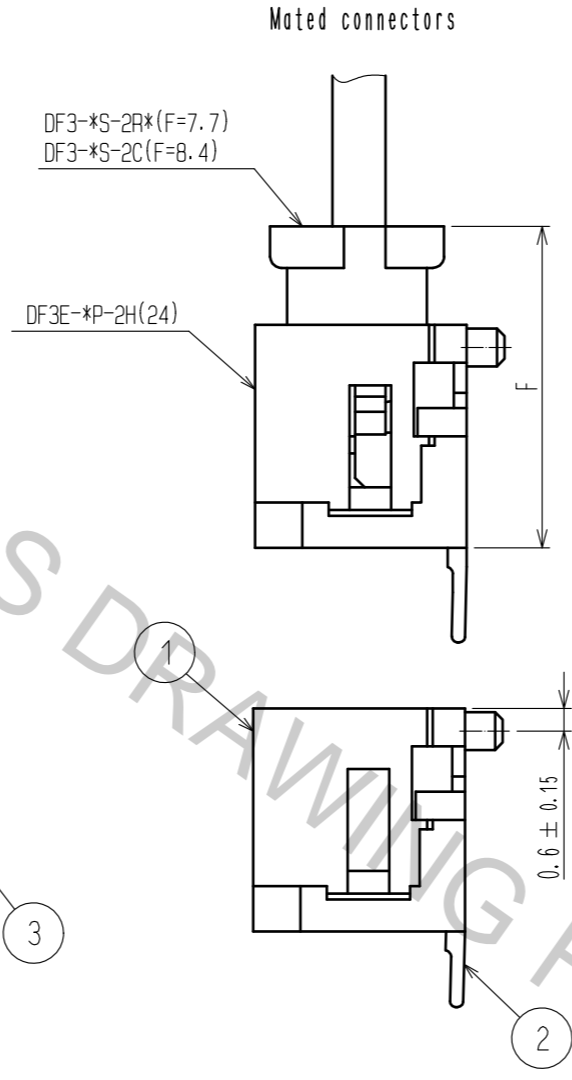
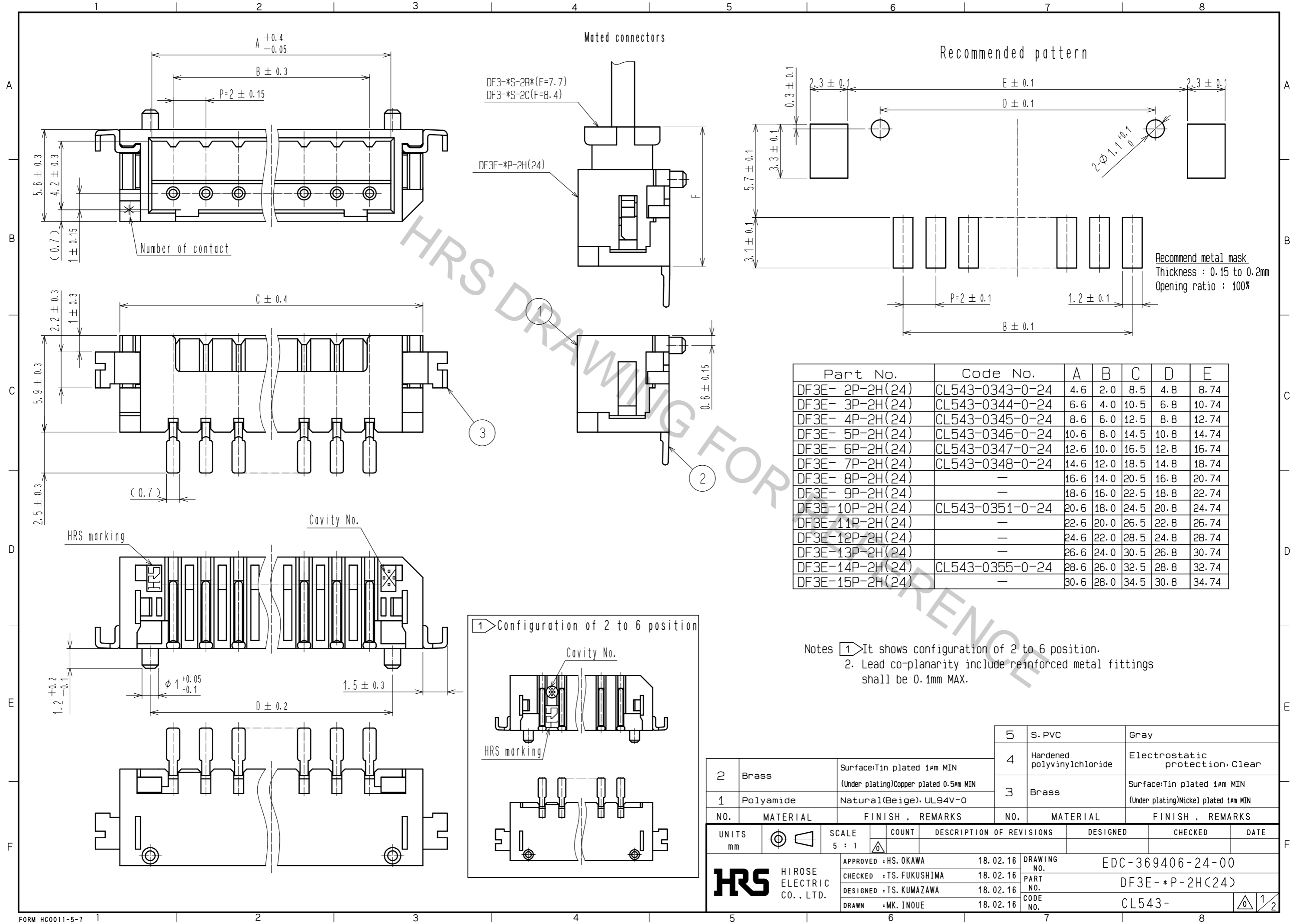
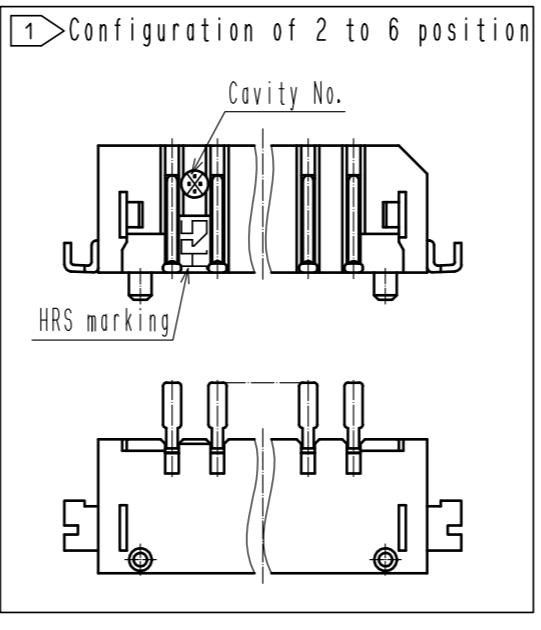


Aug.1.2018 Copyright 2018 HIROSE ELECTRIC CO., LTD. All Rights Reserved.
 In case that the application demands a high level of reliability, such as automotive,
 please contact a company representative for further information.



Part No.	Code No.	A	B	C	D	E
DF3E- 2P-2H(24)	CL543-0343-0-24	4.6	2.0	8.5	4.8	8.74
DF3E- 3P-2H(24)	CL543-0344-0-24	6.6	4.0	10.5	6.8	10.74
DF3E- 4P-2H(24)	CL543-0345-0-24	8.6	6.0	12.5	8.8	12.74
DF3E- 5P-2H(24)	CL543-0346-0-24	10.6	8.0	14.5	10.8	14.74
DF3E- 6P-2H(24)	CL543-0347-0-24	12.6	10.0	16.5	12.8	16.74
DF3E- 7P-2H(24)	CL543-0348-0-24	14.6	12.0	18.5	14.8	18.74
DF3E- 8P-2H(24)	-	16.6	14.0	20.5	16.8	20.74
DF3E- 9P-2H(24)	-	18.6	16.0	22.5	18.8	22.74
DF3E-10P-2H(24)	CL543-0351-0-24	20.6	18.0	24.5	20.8	24.74
DF3E-11P-2H(24)	-	22.6	20.0	26.5	22.8	26.74
DF3E-12P-2H(24)	-	24.6	22.0	28.5	24.8	28.74
DF3E-13P-2H(24)	-	26.6	24.0	30.5	26.8	30.74
DF3E-14P-2H(24)	CL543-0355-0-24	28.6	26.0	32.5	28.8	32.74
DF3E-15P-2H(24)	-	30.6	28.0	34.5	30.8	34.74



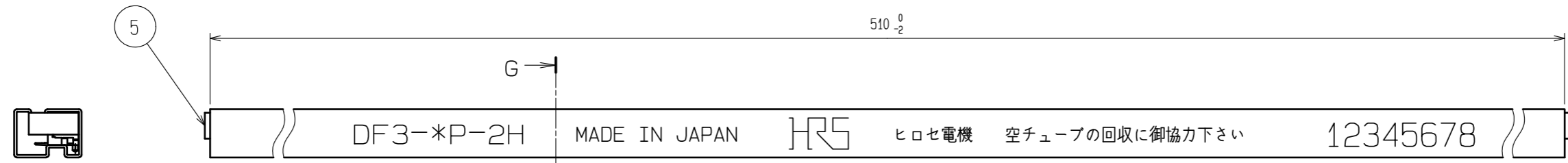
Notes 1 It shows configuration of 2 to 6 position.
 2. Lead co-planarity include reinforced metal fittings shall be 0.1mm MAX.

NO.	MATERIAL	FINISH . REMARKS	NO.	MATERIAL	FINISH . REMARKS
2	Brass	Surface: Tin plated 1μm MIN (Under plating) Copper plated 0.5μm MIN	4	S. PVC	Gray
1	Polyamide	Natural(Beige), UL94V-0	3	Brass	Surface: Tin plated 1μm MIN (Under plating) Nickel plated 1μm MIN

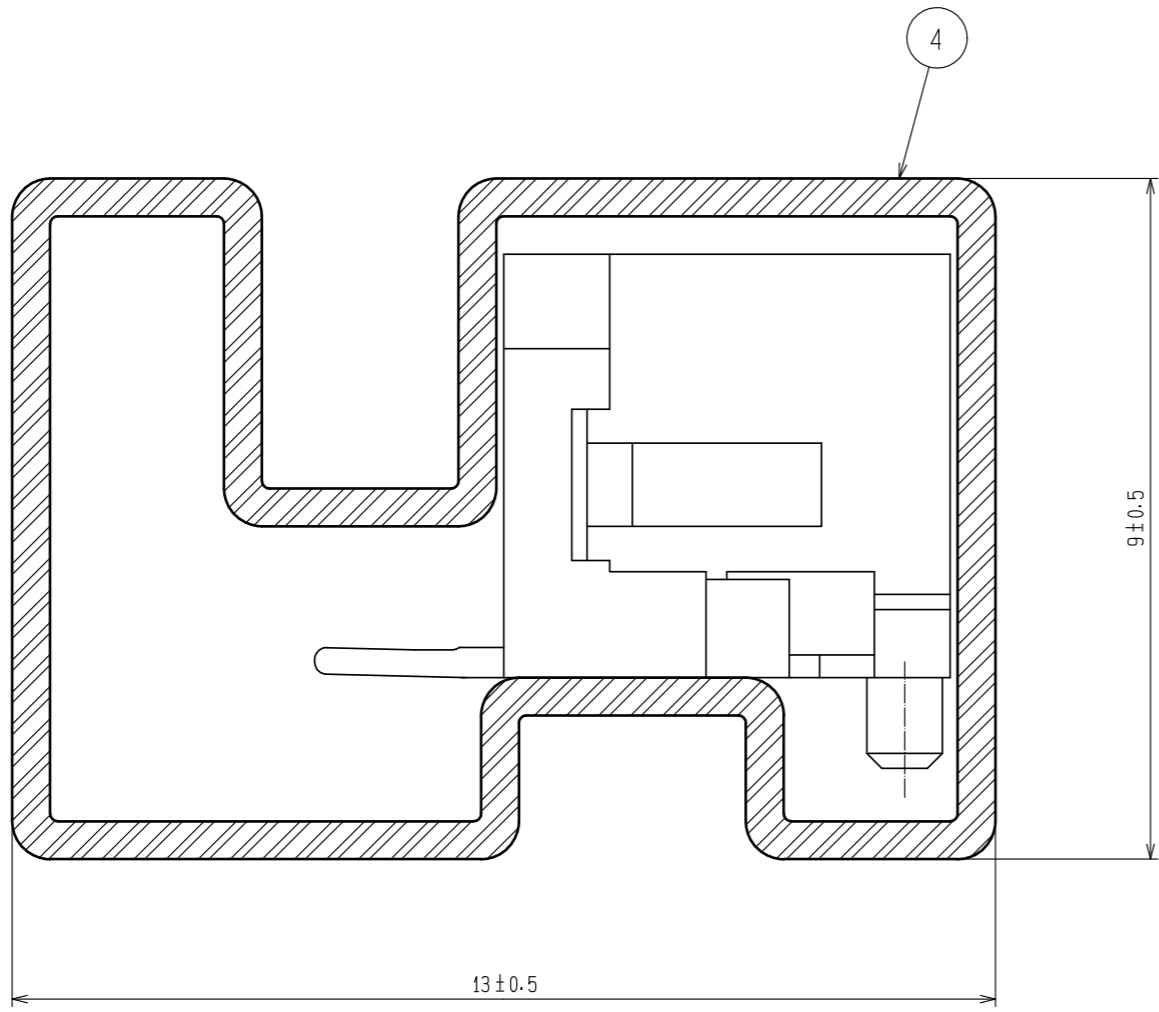
UNITS	SCALE	COUNT	DESCRIPTION OF REVISIONS	DESIGNED	CHECKED	DATE
mm	5 : 1	△	APPROVED : HS. OKAWA 18.02.16			
			CHECKED : TS. FUKUSHIMA 18.02.16			
			DESIGNED : TS. KUMAZAWA 18.02.16			
			DRAWN : MK. INOUE 18.02.16			

DRAWING NO.	PART NO.	CODE NO.
EDC-369406-24-00	DF3E-*P-2H(24)	CL543-

Aug.1.2018 Copyright 2018 HIROSE ELECTRIC CO., LTD. All Rights Reserved.
 In case that the application demands a high level of reliability, such as automotive,
 please contact a company representative for further information.



G-G (10:1)



Notes 3. Number of connectors per a magazine case shall be in accordance with the list.
 4. These connectors shall be on saled in accordance with the multiple quantity on the list.

Part No.	Code No.	Number of connectors
DF3E- 2P-2H(24)	CL543-0343-0-24	41
DF3E- 3P-2H(24)	CL543-0344-0-24	34
DF3E- 4P-2H(24)	CL543-0345-0-24	30
DF3E- 5P-2H(24)	CL543-0346-0-24	26
DF3E- 6P-2H(24)	CL543-0347-0-24	23
DF3E- 7P-2H(24)	CL543-0348-0-24	21
DF3E- 8P-2H(24)	-	19
DF3E- 9P-2H(24)	-	18
DF3E-10P-2H(24)	CL543-0351-0-24	17
DF3E-11P-2H(24)	-	15
DF3E-12P-2H(24)	-	14
DF3E-13P-2H(24)	-	14
DF3E-14P-2H(24)	CL543-0355-0-24	13
DF3E-15P-2H(24)	-	12

HRS	DRAWING NO.	EDC-369406-24-00	
	PART NO.	DF3E-*P-2H(24)	
	CODE NO.	CL543-	2/2