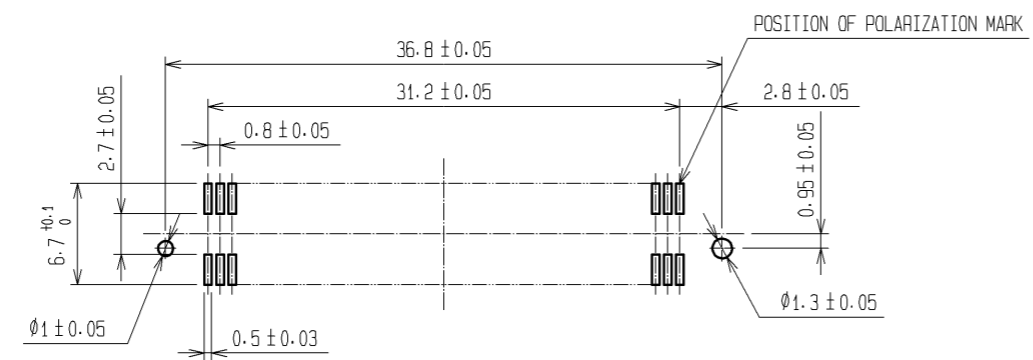
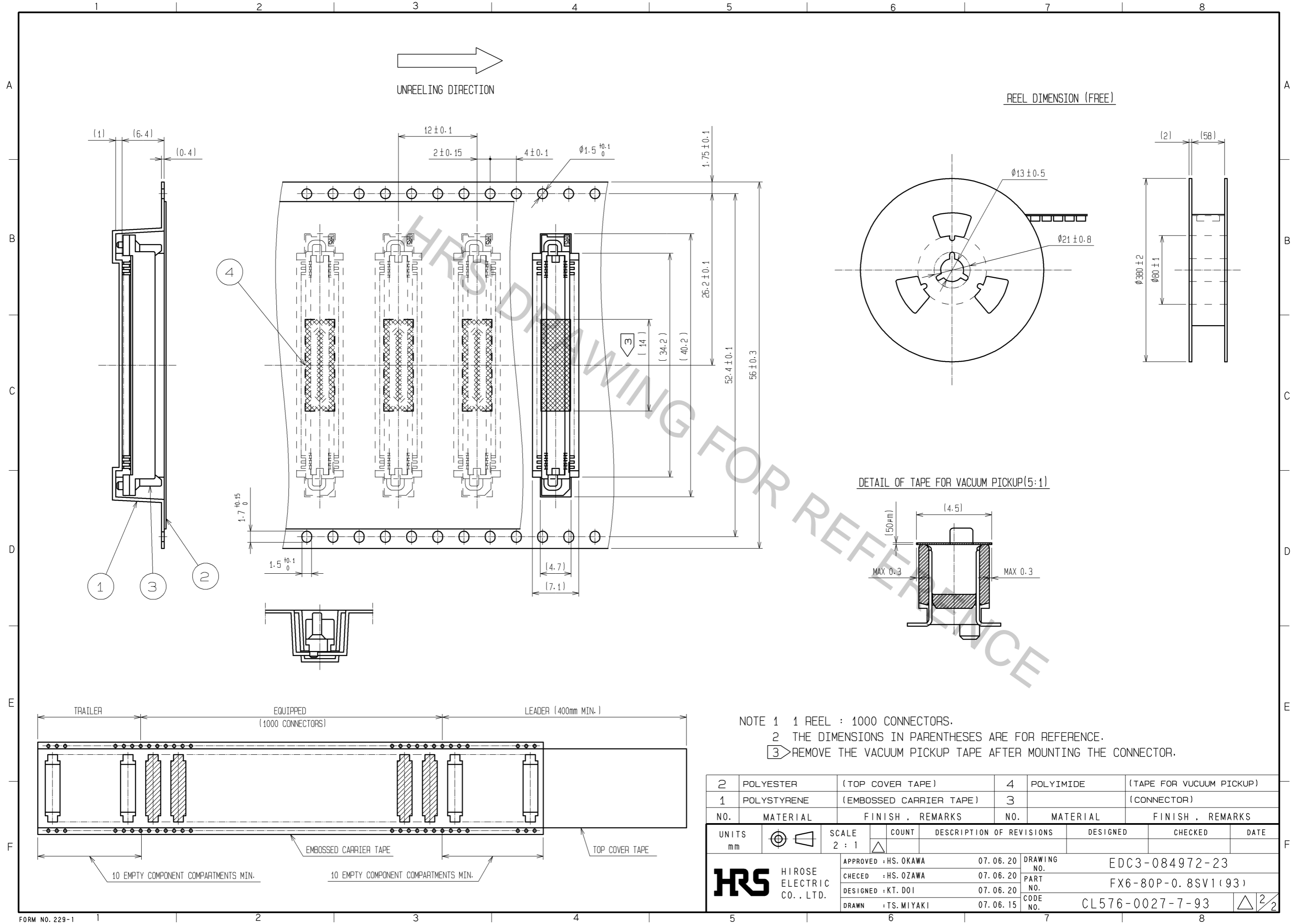


RECOMMENDED LAND PATTERN DIMENSION OF PCB(MOUNTING SIDE)



- NOTE
- 1 HRS MARK SHALL BE OPTIONAL.
  - 2 LEAD CO-PLANARITY SHALL BE 0.1mm MAX.
  - 3 EMBOSSED CARRIER TAPE PACKAGING SHALL BE APPLIED TO THIS PRODUCT. SEE NEXT PAGE FOR DETAILS.
  - 4 THIS PRODUCT HAS TAPE FOR VACUUM PICKUP. SEE NEXT PAGE FOR DETAIL OF STICKING POSITION, ETC.
  - 5 FOR MODIFICATION, ETC. PREVENTIVE HOLE FOR SINK MARK MAY BE ADDED ACCORDING TO CIRCUMSTANCES.
  - 6 THE DIMENSIONS IN PARENTHESES ARE FOR REFERENCE.

1	PPS	LIGHT BROWN (UL94V-0)	2	PHOSPHOR BRONZE	CONTACT AREA:GOLD 0.1µm min. LEAD AREA:TIN-PLATING 1µm min. UNDER PLATING:NICKEL 1µm min.		
NO.	MATERIAL	FINISH . REMARKS	NO.	MATERIAL	FINISH . REMARKS		
UNITS mm		SCALE 2 : 1	COUNT 	DESCRIPTION OF REVISIONS	DESIGNED	CHECKED	DATE
<b>HRS</b> HIROSE ELECTRIC CO., LTD.		APPROVED : HS. OKAWA	07.06.20	DRAWING NO.	EDC3-084972-23		
		CHECED : HS. OZAWA	07.06.20	PART NO.	FX6-80P-0.8SV1(93)		
		DESIGNED : KT. DOI	07.06.20	CODE NO.	CL576-0027-7-93		
		DRAWN : TS. MIYAKI	07.06.15				



2	POLYESTER	(TOP COVER TAPE)	4	POLYIMIDE	(TAPE FOR VUCUUM PICKUP)		
1	POLYSTYRENE	(EMBOSSD CARRIER TAPE)	3		(CONNECTOR)		
NO.	MATERIAL	FINISH . REMARKS	NO.	MATERIAL	FINISH . REMARKS		
UNITS mm		SCALE 2 : 1	COUNT △	DESCRIPTION OF REVISIONS	DESIGNED	CHECKED	DATE
<b>HRS</b> HIROSE ELECTRIC CO., LTD.	APPROVED : HS. OKAWA	07.06.20	DRAWING NO.	EDC3-084972-23			
	CHECED : HS. OZAWA	07.06.20	PART NO.	FX6-80P-0.8SV1(93)			
	DESIGNED : KT. DOI	07.06.20	CODE NO.	CL576-0027-7-93			
	DRAWN : TS. MIYAKI	07.06.15		△ 2/2			