

**MICRO SWITCH**  
a Honeywell Division

FED. MFG. CODE 91929

**SWITCH - BASIC**

CATALOG LISTING  
**V3L-1084**

**CQ-L9933**

REPLACES X89865-V3L

RELEASE NO. PR-16900

CATALOG LISTING

**V3L-1084**

**M**

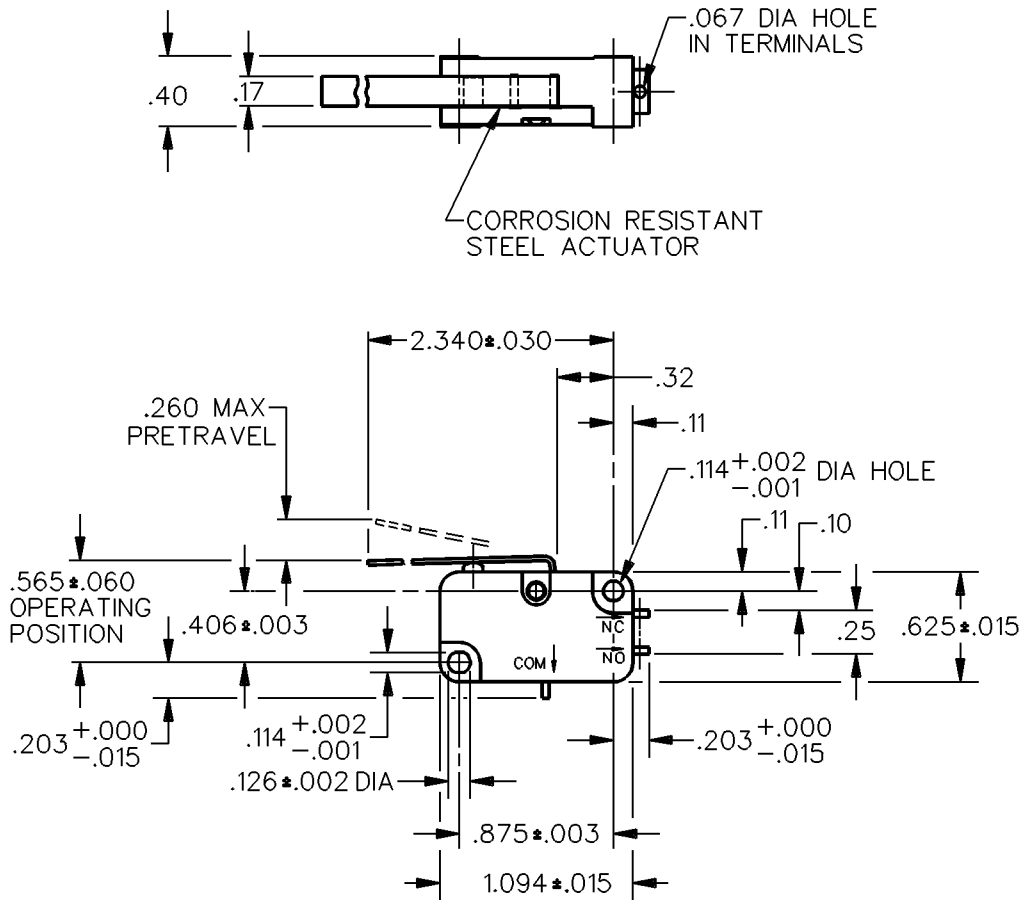
ISSUE  
**2**

CHECK

REVISIONS

A	CO	76446
	DCS	1 FEB 94

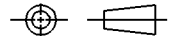
CHECK



NOTE  
1 - TERMINALS ARE PLATED FOR SOLDERING

THIS DRAWING COVERS A PROPRIETARY ITEM AND IS THE PROPERTY OF MICRO SWITCH, A DIVISION OF HONEYWELL. THIS DRAWING IS NOT TO BE COPIED OR USED WITHOUT THE APPROVAL OF MICRO SWITCH.

THIRD ANGLE PROJECTION



**CHARACTERISTICS**

OPERATING FORCE — — — 4 OZ MAX  
RELEASE FORCE — — — — 1/2 OZ MIN  
DIFFERENTIAL TRAVEL — — — .090 MAX  
OVERTRAVEL — — — — — .150 MIN  
RELEASE TRAVEL — — — — — .021 MIN

**ELECTRICAL DATA**

CONTACT ARRANGEMENT  
S P D T

L83  
15.1A 1/2HP 125 OR 250 VAC  
1/2A 125 VDC, 1/4A 250 VDC  
5A 125 VAC "L"

SCALE FULL DO NOT SCALE PRINT

**UNLESS OTHERWISE SPECIFIED TOLERANCES ARE**

ONE PLACE (.0)	± .030
TWO PLACE (.00)	± .015
THREE PLACE (.000)	± .005
ANGLES	±



WEIGHT

DDM/CAD  
DRAWN

G R T 15 NOV 88 CHECK