

PART NUMBER	REV	FIRST USED	TERMINATOR	FEED TYPE	DESCRIPTION
1339508-1	B	-	BENCH & LEADMAKER	MECH POST FEED	HD-I APPLICATOR
7-1339508-1	B	-	BENCH & LEADMAKER	MECH POST FEED	-1 AND SPARE PARTS
7-1339508-7	A	-	-	-	SPARE PARTS KIT

CRIMP DATA (AMP TERMINAL)

TERMINAL NAME: FASTIN-FASTON TAB 5MM SERIES

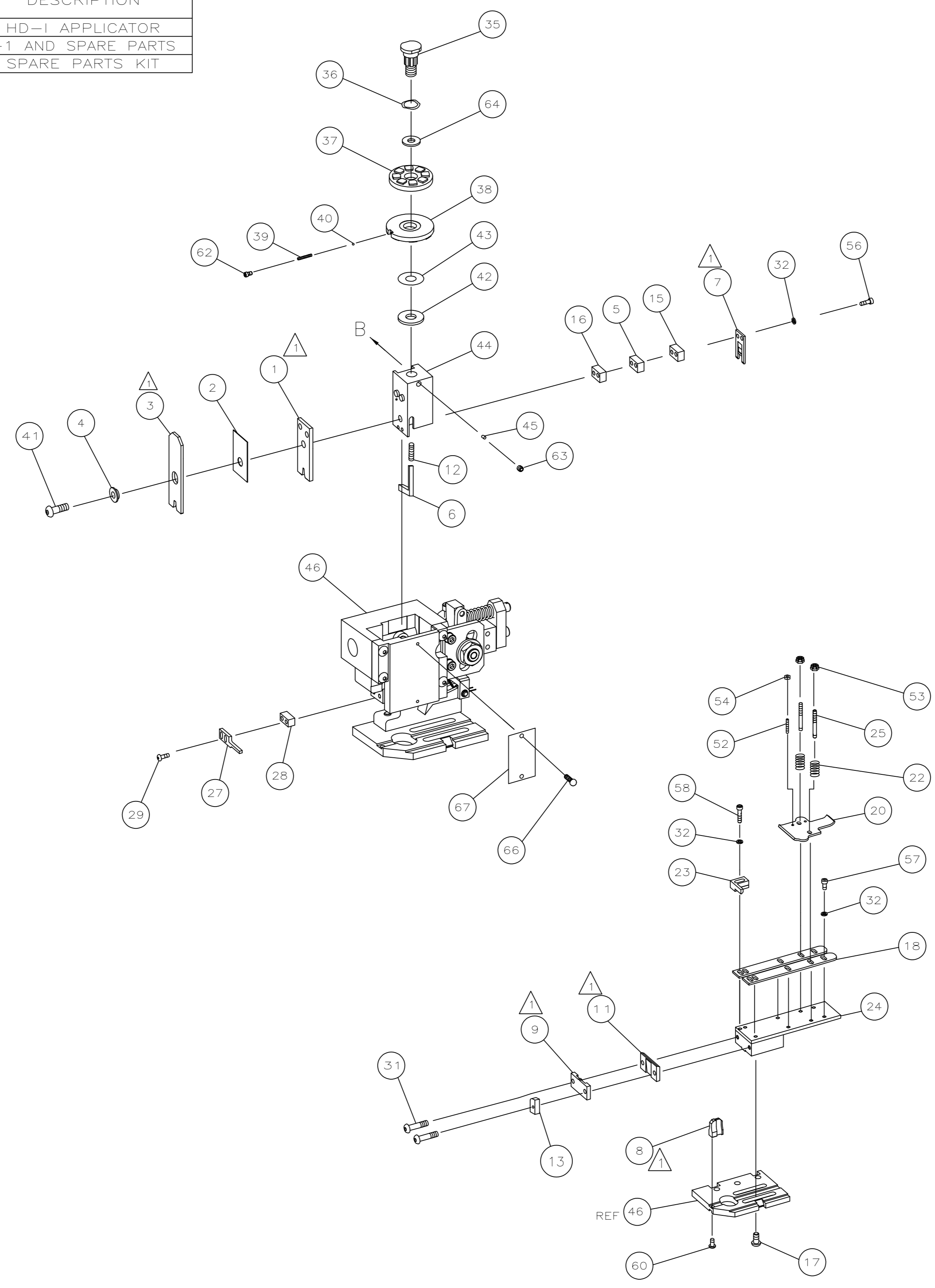
CRIMP	SIZE	TYPE	RANGE
WIRE	2.29 [.090 IN]	F	0.35mm ² - 1.00mm ²
INSUL	3.30 [.130 IN]	F	1.20-2.10 [.047-.083 IN]
WIRE STRIP LENGTH	APPL INSTRUCTION		
5.00-6.00 [.197-.235 IN]	408-8323		

TERMINAL	114-15007 (B)	-	FEED
APPL SPEC	114-15069 (A)	-	27.50 [1.083 IN]

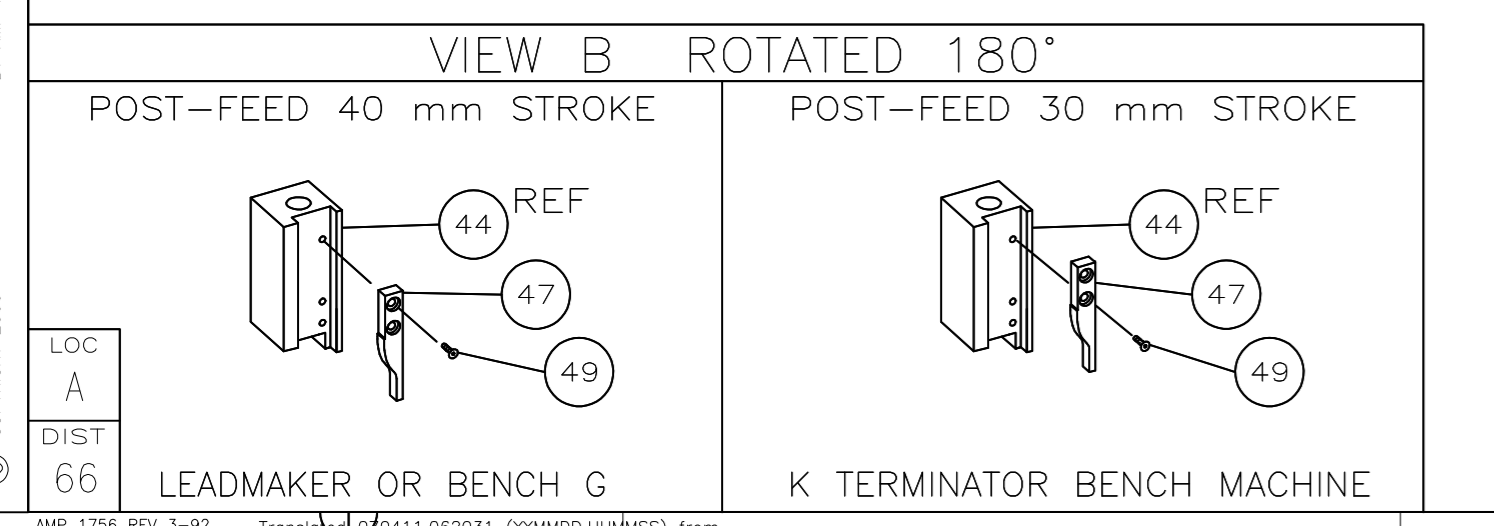
TERMINALS APPLIED

TERMINAL	144838 (A)	-	-	-
TERMINAL	142107 (B)	-	-	-
TERMINAL	142087 (B)	-	-	-

WIRE SIZE	CRIMP HEIGHT	PIN PN & LENGTH [IN]
mm ² AWG	mm	
1.00mm ²	1.42 ±0.05 [.056 ±0.002 IN]	1-354779-8 [.3080]
0.75mm ²	1.32 ±0.05 [.052 ±0.002 IN]	2-354779-4 [.3110]
0.60mm ²	1.29 ±0.05 [.051 ±0.002 IN]	2-354779-7 [.3125]
0.50mm ²	1.24 ±0.05 [.049 ±0.002 IN]	3-354779-1 [.3145]
0.35mm ²	1.19 ±0.05 [.047 ±0.002 IN]	3-354779-6 [.3170]



- 1 RECOMMENDED SPARE PARTS.
- 2. GREASE RAM, CAM, CAM FOLLOWER AND FEED ROD LIGHTLY.
- 3. LUBRICATE DAILY PER THE APPLICATOR INSTRUCTION SHEET SUPPLIED WITH THE APPLICATOR.



QTY	REQD PER ASSY	PART NO	DESCRIPTION	ITEM NO		
-	1	1	1339508	PRINT, APPLICATOR LOG SHEET	73	
-	1	1	1338705-2	DOCUMENTATION PACKAGE	71	
-	-	-	-	-	70	
-	-	-	-	-	69	
-	-	-	-	-	68	
-	1	1	461264-1	PLATE, IDENTIFICATION	67	
-	2	2	21017-2	SCR,DRIVE(#2X.19)ID PLATE	66	
-	-	-	-	-	65	
-	1	1	986950-1	WASHER, FLAT PRECISION	64	
-	1	1	3-18031-0	SCR,SKT SET(M6X6)RAM	63	
-	1	1	18023-9	SCR,SKT CAP(M4X6)CP DSC	62	
-	-	-	-	-	61	
-	1	1	18024-7	SCR,BHC(M4X10)ANVIL	60	
-	-	-	-	-	59	
-	2	2	1-18023-3	SCR,SHC(M4)HOLD DOWN	58	
-	5	5	1-18023-0	SCR,SHC(M4X8)STRIP GUIDE	57	
-	2	2	1-18023-4	SCR,SHC(M4X20)SLUG BLADE	56	
-	-	-	-	-	55	
-	2	2	18029-1	NUT,HEX(M3)DRAG	54	
-	2	2	986965-1	NUT,HEX SL(M4)DRAG STUD	53	
-	2	2	2-18032-2	SCR,SKT SET(M3X10)DRAG	52	
-	-	-	-	-	51	
-	-	-	-	-	50	
-	1	1	18024-3	SCR,BHC(M3X10)CAM	49	
-	-	-	-	-	48	
-	1	1	1338676-1	CAM, POST-FEED 30 & 40 mm ST	47	
-	1	1	1338662-1	APPLICATOR, BASIC (SUBASSY)	46	
-	1	1	690191-1	PLUG, NYLON	45	
-	1	1	1320998-1	RAM	44	
-	1	1	690125-1	WASHER, LAMINATED	43	
-	1	1	690124-1	WASHER, RAM	42	
-	1	1	2-18024-6	SCREW,BHC(M8X25)CRIMPER	41	
-	1	1	23241-1	BALL, STEEL	40	
-	1	1	2-22278-7	SPRING, COMPRESSION	39	
-	1	1	1320922-1	DISC, INSULATION	38	
-	1	1	354777-1	WIRE DISC, PLASTIC	37	
-	1	1	22480-5	WASHER, SPRING	36	
-	1	1	690212-1	POST, RAM	35	
-	-	-	-	-	34	
-	-	-	-	-	33	
-	9	9	18025-2	WASHER,LOCK(M4)SHEAR BL	32	
-	2	2	1-18024-0	SCR,BHC(M4X20)SHEAR PL	31	
-	-	-	-	-	30	
-	2	2	18024-8	SCR,BHC(M4X12)STRIPPER	29	
-	1	1	3-690451-2	SPACER, STRIPPER	28	
-	1	1	240639-1	STRIPPER	27	
-	-	-	-	-	26	
-	2	2	1320906-1	DRAG, STUD	25	
-	1	1	1320995-2	STRIP GUIDE	24	
-	1	1	240825-7	PLATE, STRIP HOLD DOWN	23	
-	2	2	4-22281-1	SPRING, DRAG	22	
-	-	-	-	-	21	
-	1	1	1338665-1	DRAG, STOCK	20	
-	-	-	-	-	19	
-	2	2	1338663-4	GUIDE, LOWER STRIP	18	
-	4	4	1-18024-8	SCR,BHC(M6X12)STRIP GD PL	17	
-	1	1	1338708-1	SPACER, SLUG BLADE	16	
-	1	1	1-240641-7	SPACER, SLUG BLADE	15	
-	-	-	-	-	14	
-	1	1	1-690481-3	SPACER, HOLD DOWN	13	
-	1	1	23846-1	SPRING, DIE	12	
-	1	1	691901-2	PLATE, REAR SHEAR	11	
-	-	-	-	-	10	
-	1	1	690482-1	PLATE, FRONT SHEAR	9	
-	1	2	1	1333217-1	ANVIL	8
-	1	1	1	690474-2	BLADE, SLUG	7
-	1	1	1	3-455892-1	HOLD DOWN, TERMINAL	6
-	1	1	1	7-240641-7	SPACER, SLUG BLADE	5
-	1	1	1	238009-1	SPACER, BLOCK CRIMPER	4
-	1	2	1	1-456134-9	CRIMPER, INSULATION	3
-	1	1	1	455888-4	SPACER, CRIMPER	2
-	1	2	1	1-456406-6	CRIMPER, WIRE	1
-	-	-	-	-	-	-
-	77	71	-1	PART NO	DESCRIPTION	ITEM NO

DR	15AUG00	APP	15AUG00
L.LOFTHOUSE		F.BACKHURST	
CHK	-	REL	24-07-01
		M.CLIFFORD	
<p>AMP Incorporated Harrisburg, PA 17105-3608</p>			
<p>NAME: END FEED HD-I APPLICATOR</p>			<p>MACHINE REF: HD-I APPL</p>
<p>SCALE: D</p>		<p>DWG NO: 1339508</p>	
<p>SHEET 1 of 1</p>		<p>REV B</p>	

CAGE CODE 00779 CUSTOMER AND ASSEMBLY DRAWING

THIS DRAWING IS A CONTROLLED DOCUMENT.

LAYOUT L1339508 SET UP GAGE 458638-3

THIS DRAWING IS UNPUBLISHED. RELEASED FOR PUBLICATION. BY AMP INCORPORATED. ALL RIGHTS RESERVED. COPYRIGHT 2000

1339508

D

C

B

A