

Faster.  
Easier.  
Better.



## XM and XS Series – Accessories



### Vertical Lacing/PDU Mounting Panel

<b>XVMP</b>			
<b>Panel Width</b>		<b>Frame Height</b>	<b>Color</b>
01 3.5"	42 42RU	01 Black	
02 7"	45 45RU	02 CO White	
	48 48RU		

### Vertical Manager – Box Style With door.

<b>XVM</b>	<b>01</b>		
<b>Frame Height</b>		<b>Color</b>	
42 42RU	01 Black		
45 45RU	02 CO White		
48 48RU			

### Vertical Manager – Finger Style With door.

<b>XVM</b>	<b>02</b>		
<b>Frame Height</b>		<b>Color</b>	
42 42RU	01 Black		
45 45RU	02 CO White		
48 48RU			

Description	Belden Part Number
-------------	--------------------

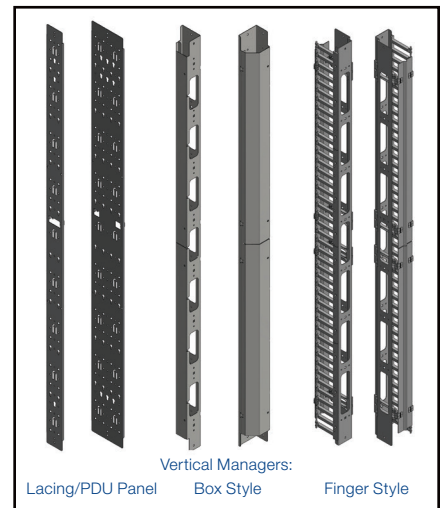
### Other Accessories

#### Ring Kits

Cable Management Ring Plastic (Qty = 5) 3" x 1.5" Reversible	<b>XMR01</b>
Cable Management Ring Kit (Qty = 5) 6.5" Wide x 3" Deep	<b>XMR02</b>
Cable Management Ring Kit (Qty = 5) 2.5" Wide x 3" Deep	<b>XMR03</b>
Fiber Slack Management Spools 6" deep (includes 2 spools)	<b>BHSP020</b>
Fiber Slack Management Spools 2" deep for lacing panels (includes 2 spools)	<b>BHSP030</b>
Quick Mount Base (Qty=10) includes Fastener, for 1/4" Holes	<b>XTCM01</b>
Velcro Cable Ties, 25 per Roll, 8"L	<b>AX100783</b>
Velcro Cable Ties, 25 per Roll, 12"L	<b>AX100784</b>

#### Vertical Ground Bars

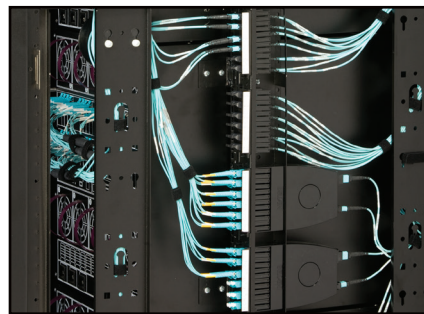
Vertical Ground Bar, Insulated, 42RU	<b>XVGB0142</b>
Vertical Ground Bar, Insulated, 45RU	<b>XVGB0145</b>
Vertical Ground Bar, Insulated, 48RU	<b>XVGB0148</b>



## Zero U – Vertical Patch Panel and Connectivity

### Features

- Attach to mounting rails
- 24" wide enclosure can accept up to four x 7 positions vertical patch panels
- 30" wide enclosure can accept up to four x 14 positions vertical patch panels
- Vertical patch panels are fully compatible with Belden copper and fiber connectivity (FX UHD, FX Ultra Frames and Cassettes)



Description	Belden Part Number
-------------	--------------------

### Zero U – Vertical Patch Panel and Connectivity

Vertical Patch Panel (7 positions), Compatible with 24" and 30" Wide XS Enclosures	<b>XZUK01</b>
Vertical Patch Panel (14 positions), Compatible with 30" Wide XS Enclosures	<b>XZUK02</b>
FXUHD KeyConnect Frame Blank	<b>FFZH00BB</b>
FXUHD KeyConnect Frame 6-Port, Black (Empty)	<b>FFZH06KC</b>
FXUHD KeyConnect Frame 8-Port, Black (Empty)	<b>FFZH08KC</b>
10GX KeyConnect Couplers for Vertical Mount Patch Panel, 8-Port, Black	<b>AX105366</b>
CAT6+ KeyConnect Couplers for Vertical Mount Patch Panel, 8-Port, Black	<b>AX105367</b>

Belden Zero U - Vertical patch panel allows for optimal use of mounting space into XS Series enclosures by providing high-density connectivity options along the equipment mounting rails.