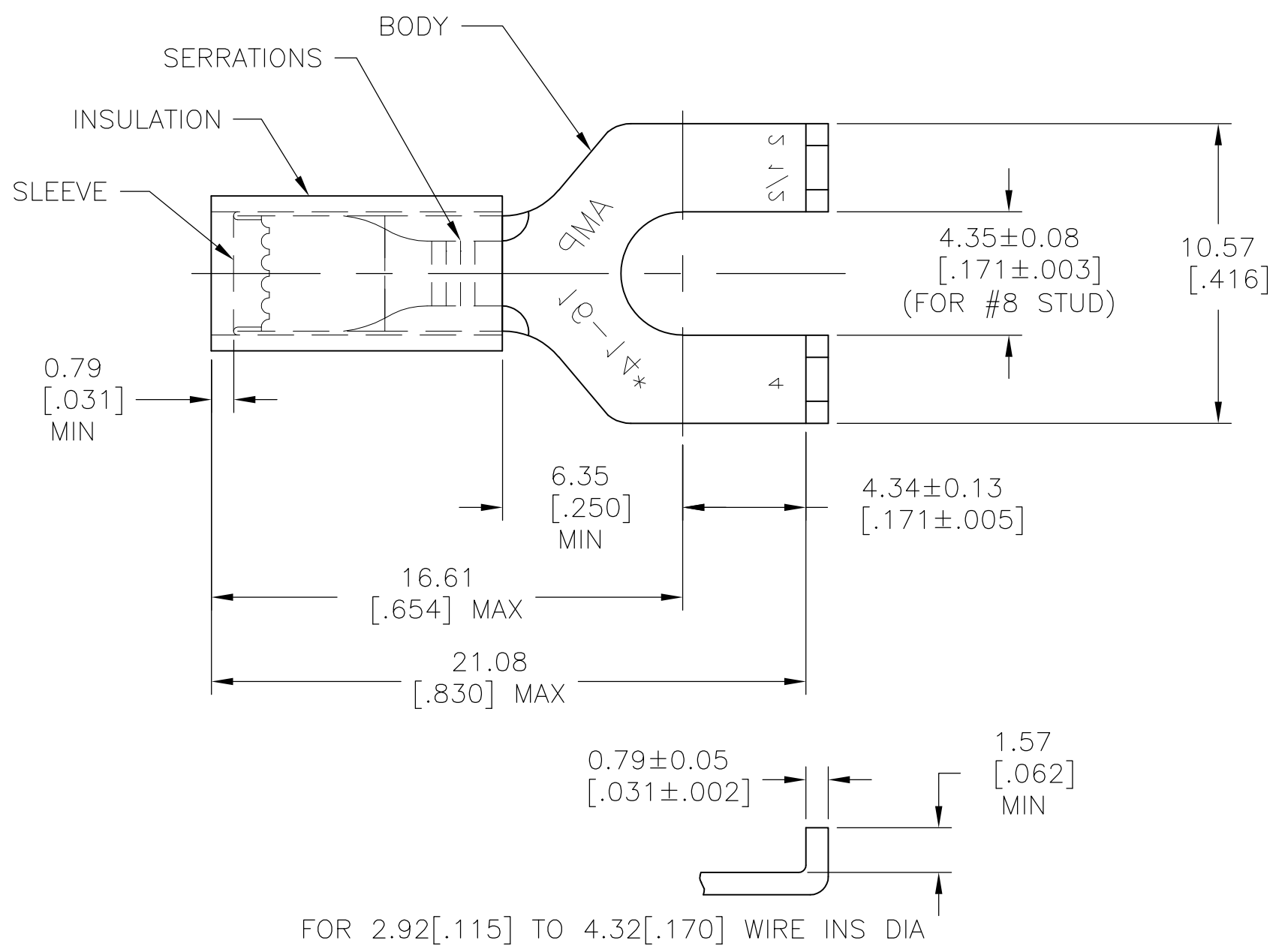


THIS DRAWING IS UNPUBLISHED. RELEASED FOR PUBLICATION
 © COPYRIGHT - By - ALL RIGHTS RESERVED.

LOC	DIST	REVISIONS					
G	14	P	LTR	DESCRIPTION	DATE	DWN	APVD
			B2	REVISED PER ECO-14-019230	02APR2015	NK	DR



OBSOLETE	5000	33156 ON TAPE	2-33156-1	SLEEVE: COPPER (ASTM-B152) BODY: COPPER (ASTM-B152) TIN PL (ASTM-B545) INSULATION: NYLON COLOR: BLUE
	1000	WIRE TERMINAL	33156	
	QTY	DESCRIPTION	PART NO	

THIS DRAWING IS A CONTROLLED DOCUMENT.		DWN RAGHAVENDRA 14APR09	STE TE Connectivity		
DIMENSIONS: mm [INCHES]		CHK JEFF RUTH 14APR09			
TOLERANCES UNLESS OTHERWISE SPECIFIED:		APVD Tom Michielutti 14APR09	NAME		
0 PLC ± -		PRODUCT SPEC	WIRE TERMINAL		
1 PLC ± -		APPLICATION SPEC	P.I.D.G.-FLANGED SPADE		
2 PLC ± -		WEIGHT -	WIRE SIZE: 16-14		
3 PLC ± 0.20[.008]		SIZE	CAGE CODE	DRAWING NO	RESTRICTED TO
4 PLC ± -		A3	00779	C-33156	-
ANGLES ± 5°		CUSTOMER DRAWING		SCALE 5:1	SHEET 1 OF 1
MATERIAL SEE TABLE	FINISH SEE TABLE			REV B2	