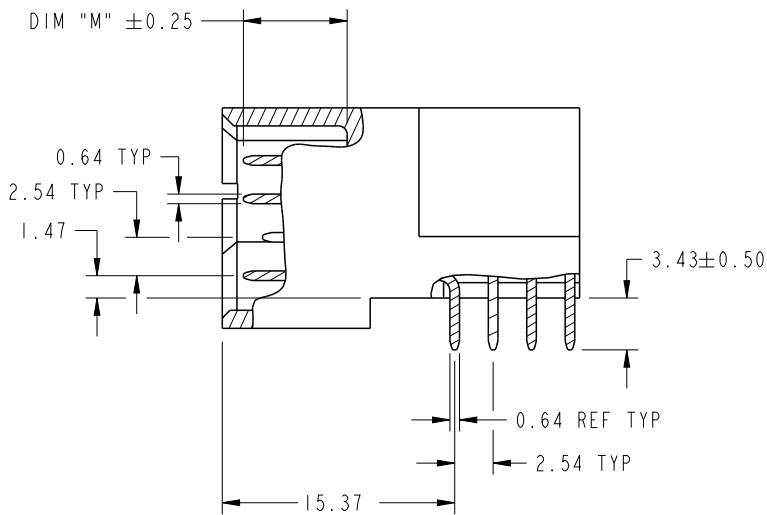


CODE	DIM "M" MATING LENGTH	CONTACT TYPE
U	[6.86]	SIGNAL
T	[6.86]	SIGNAL
R	[6.86]	SIGNAL
S	[6.86]	SIGNAL
PA	[N/A]	POWER
F	[5.59]	SIGNAL
E	[5.59]	SIGNAL

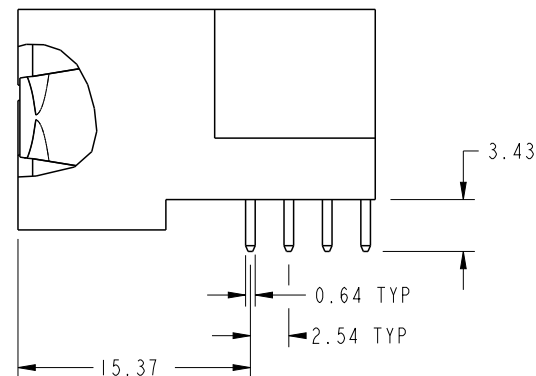
spec ref	See Notes		dr	Anson Liu	2011/05/06	projection 	MM ←→	size	A4	scale	1:1
tolerance std	TOLERANCES UNLESS OTHERWISE SPECIFIED		eng	Guang, Shi	2011/06/30			ecn no	-		
See Notes			chr	-	-			rel level	Released		
surface	linear	0.X ±0.50	FCI www.fci.com	title			product family	PwrBlade	dwg no	51730-195	rev
		0.XX ±0.25		2P + 24S + 2P							
		0.XXX ±0.10.		RIGHT ANGLE SOLDER HEADER							
	angular	0° ±2°	cat. no.	Product - Customer Drw				sheet 1 of 4			

PRODUCT NUMBER

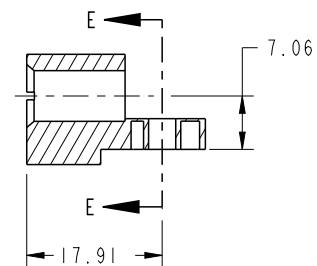
51730-195:--  
NOTE: 3



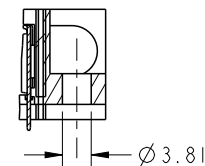
BROKEN-OUT SECTION A-A  
SCALE 2:1



BROKEN-OUT SECTION B-B  
SCALE 2:1



SECTION C-C



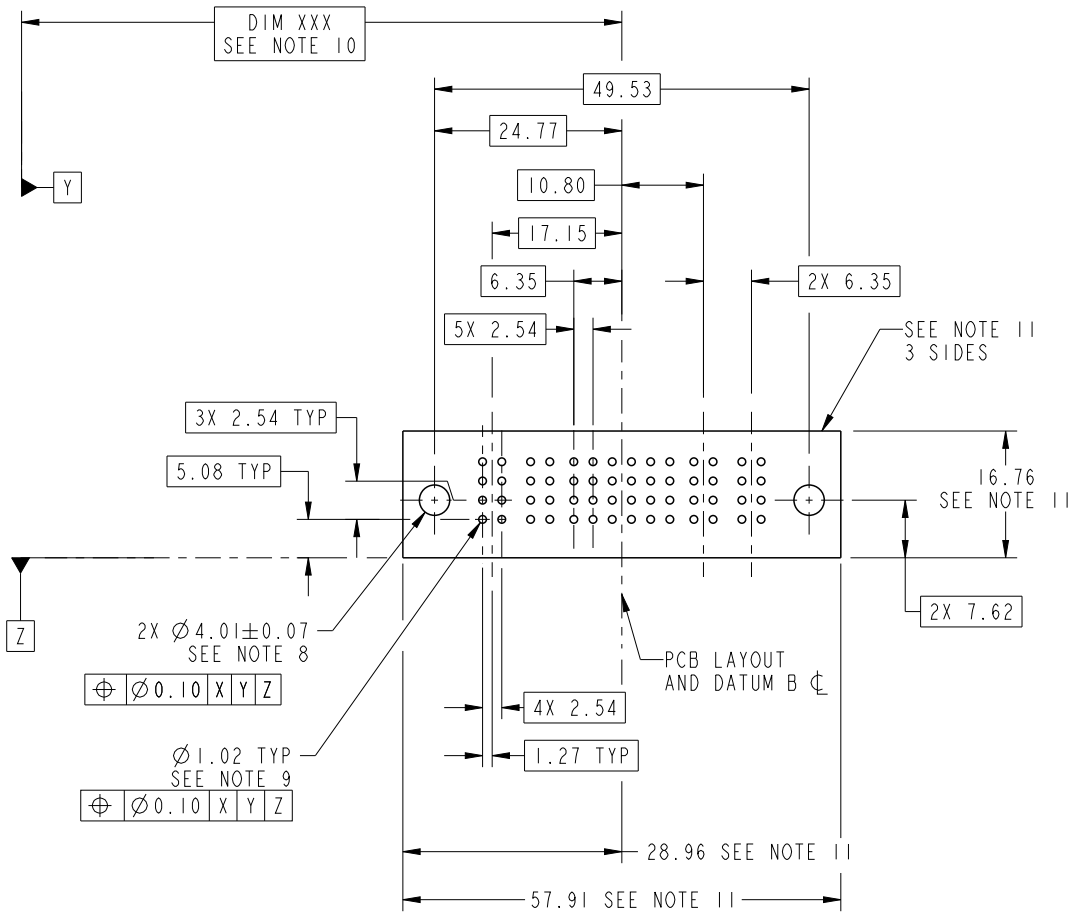
PARTIAL SECTION E-E

spec ref	See Notes			dr	Anson Liu	2011/05/06	projection 	MM ←→	size	A4	scale	1:1	
tolerance std	TOLERANCES UNLESS OTHERWISE SPECIFIED			eng	Guang, Shi	2011/06/30			ecn no	-			
See Notes				chr	-	-			rel level	Released			
surface	✓	linear	0.X	±0.50	FCI www.fci.com	title	2P + 24S + 2P RIGHT ANGLE SOLDER HEADER	dwg no	51730-195	rev	A		
			0.XX	±0.25							cat. no.	Product - Customer Drw	sheet 2 of 4
			0.XXX	±0.10									
		angular	0°	±2°									

PrdrE File - REV C - 2009-06-09

PRODUCT NUMBER

51730-195:--  
NOTE: 3



RECOMMENDED PCB LAYOUT

spec ref	See Notes			dr	Anson Liu	2011/05/06	projection	MM	size	A4	scale	1:1
tolerance std	TOLERANCES UNLESS OTHERWISE SPECIFIED			eng	Guang, Shi	2011/06/30				ecn no	-	rel level
See Notes				chr	-	-		product family		PwrBlade		
surface		linear	0.X	±0.50		2P + 24S + 2P RIGHT ANGLE SOLDER HEADER	www.fci.com	cat. no.	Product - Customer Drw	dwg no 51730-195	sheet 3 of 4	
		angular	0°	±2°								

PRODUCT NUMBER

51730-195:--  
NOTE: 3

NOTES:

1. DIMENSIONS AND TOLERANCES ARE IN ACCORDANCE WITH ASME Y14.5M, 1994 UNLESS OTHERWISE SPECIFIED.

CONNECTOR NOTES:

- 2. HOUSING MATERIAL: UL 94 V-0 GLASS FILLED HIGH-TEMP THERMOPLASTIC  
POWER CONTACT MATERIAL: COPPER ALLOY  
SIGNAL PIN MATERIAL: COPPER ALLOY
  - 3. SEE ITEM 1 & 2 IN PRINT 10064183 FOR PLATING SPEC OF 51730-195 AND 51730-195LF RESPECTIVELY.
  - 4. MANUFACTURER'S NAME, DATE CODE AND OPTIONAL P/N TO APPEAR ON THIS SURFACE. THE P/N CAN BE OMITTED IF THERE IS NOT ENOUGH SPACE ON THIS SURFACE.
  - 5. PRODUCT SPECIFICATION GS-12-149.  
APPLICATION SPECIFICATION BUS-20-067.
  - 6. PACKAGED IN TRAYS.
- PCB NOTES:
- 7. ALL HOLE DIAMETERS ARE FINISHED HOLE SIZE.
  - 8. MOUNTING HOLES, WHERE APPLICABLE, ARE UNPLATED.
  - 9.  $\varnothing 1.151 \pm 0.025$  DRILLED HOLES PLATED WITH 0.008 MIN SnPb OR Sn OVER 0.03 TO 0.08 Cu PLATING TO ACHIEVE  $\varnothing 1.02 \pm 0.07$  HOLE.
  - 10. "DIM XXX" TO BE DETERMINED BY THE CUSTOMER.
  - 11. CONNECTOR KEEP-OUT ZONE.



Copyright FCI.

spec ref	See Notes			dr	Anson Liu	2011/05/06	projection 	MM 	size	A4	scale	1:1
tolerance std	TOLERANCES UNLESS OTHERWISE SPECIFIED			eng	Guang, Shi	2011/06/30			ecn no	-		
See Notes				chr	-	-						
surface	linear	0.X	$\pm 0.50$	appr	Pei-Ming Zheng	2011/07/07	product family	PwrBlade	rel level	Released		
		0.XX	$\pm 0.25$	title 2P + 24S + 2P RIGHT ANGLE SOLDER HEADER			dwg no	51730-195		rev	A	
		0.XXX	$\pm 0.10$									
	angular	0°	$\pm 2^\circ$	www.fci.com			cat. no.	Product - Customer Drw		sheet 4 of 4		