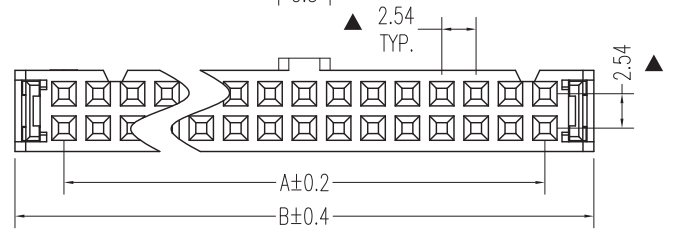
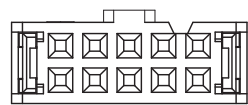
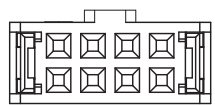
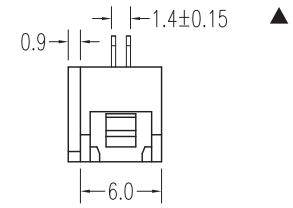
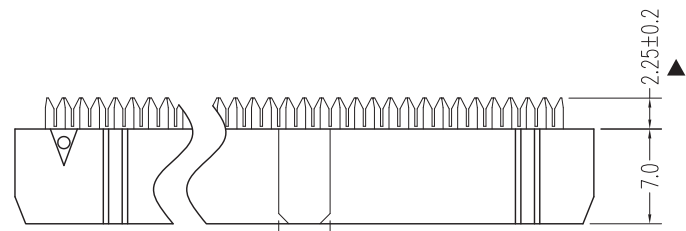
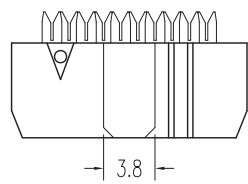
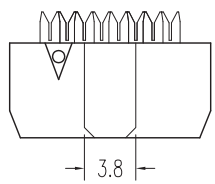
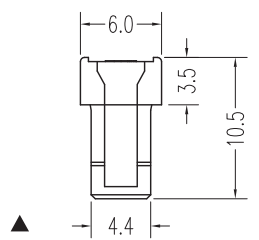
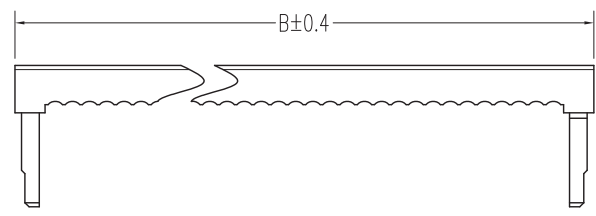


NUMBER OF POSITIONS	DIMENSION	
	A	B
08	7.62	14.86
10	10.16	17.40
12	12.70	19.94
14	15.24	22.48
16	17.78	25.02
18	20.32	27.56
20	22.86	30.10
22	25.40	32.64
24	27.94	35.18
26	30.48	37.72
30	35.56	42.80
34	40.64	47.88
36	43.18	50.42
40	48.26	55.50
44	53.34	60.58
50	60.96	68.20
60	73.66	80.90
64	78.74	85.98

NOTES:  
 Insulator Material: PBT, UL 94V-0  
 Contact Plating: Nickel 50μ"  
 Contact Material: Brass  
  
 Current Rating : 1A AC,DC  
 Contact Resistance: 20MΩ Max.  
 Dielectric Withstanding: AC 500V  
 Insulator Resistance: 1000MΩ Min.  
 Operating Temp.: -40°C~+105°C



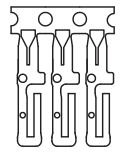
REV.	DESCRIPTION	DATE
A	RELEASE	2012/11/7



8P

10P-12P

14P-64P



Mating Part Number		
3020-ALL	3010-XX-001-11-XX	3010-XX-001-12-XX
3010-XX-002-12-XX	3010-XX-003-12-XX	

UNLESS TOLERANCE		DRAW BY
GENERAL	ANGLE	DESIGN BY
X. ± 0.30	X.* ± 3.0°	CHECK BY
.X ± 0.25	.X* ± 2.0°	APPROVE BY
.XX ± 0.20	.XX* ± 1.0°	SCALE
.XXX ± 0.10	.XXX* ± 0.5°	SHEET
		UNIT
		1:1
		1/1
		MM

**CnC Tech, LLC**

Part NO.  
3030-XX-0102-99

DRW NO: \_\_\_\_\_ REV: A