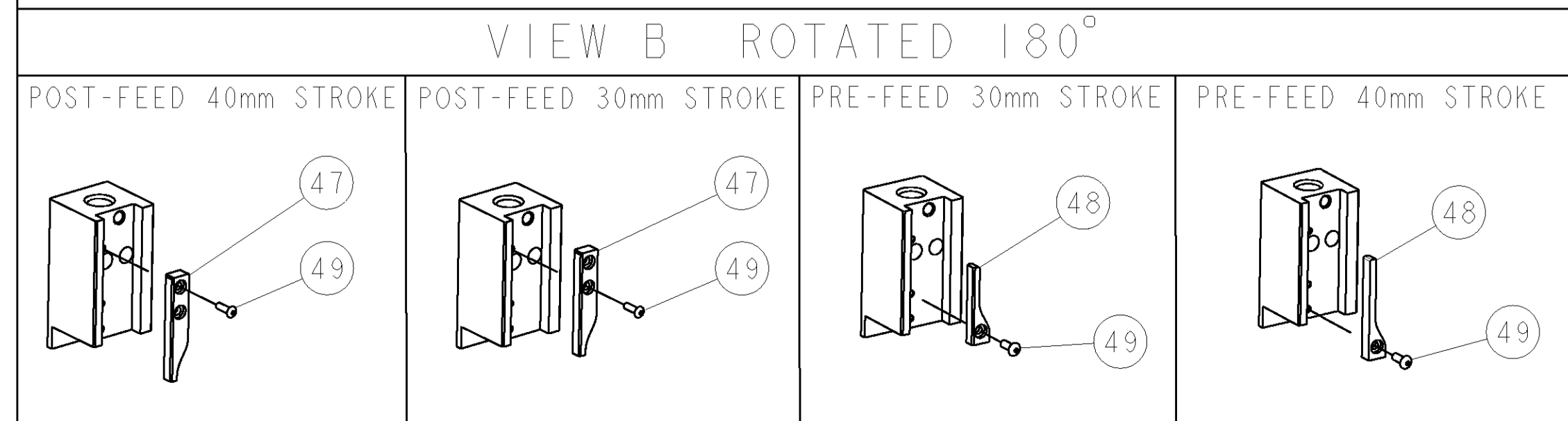
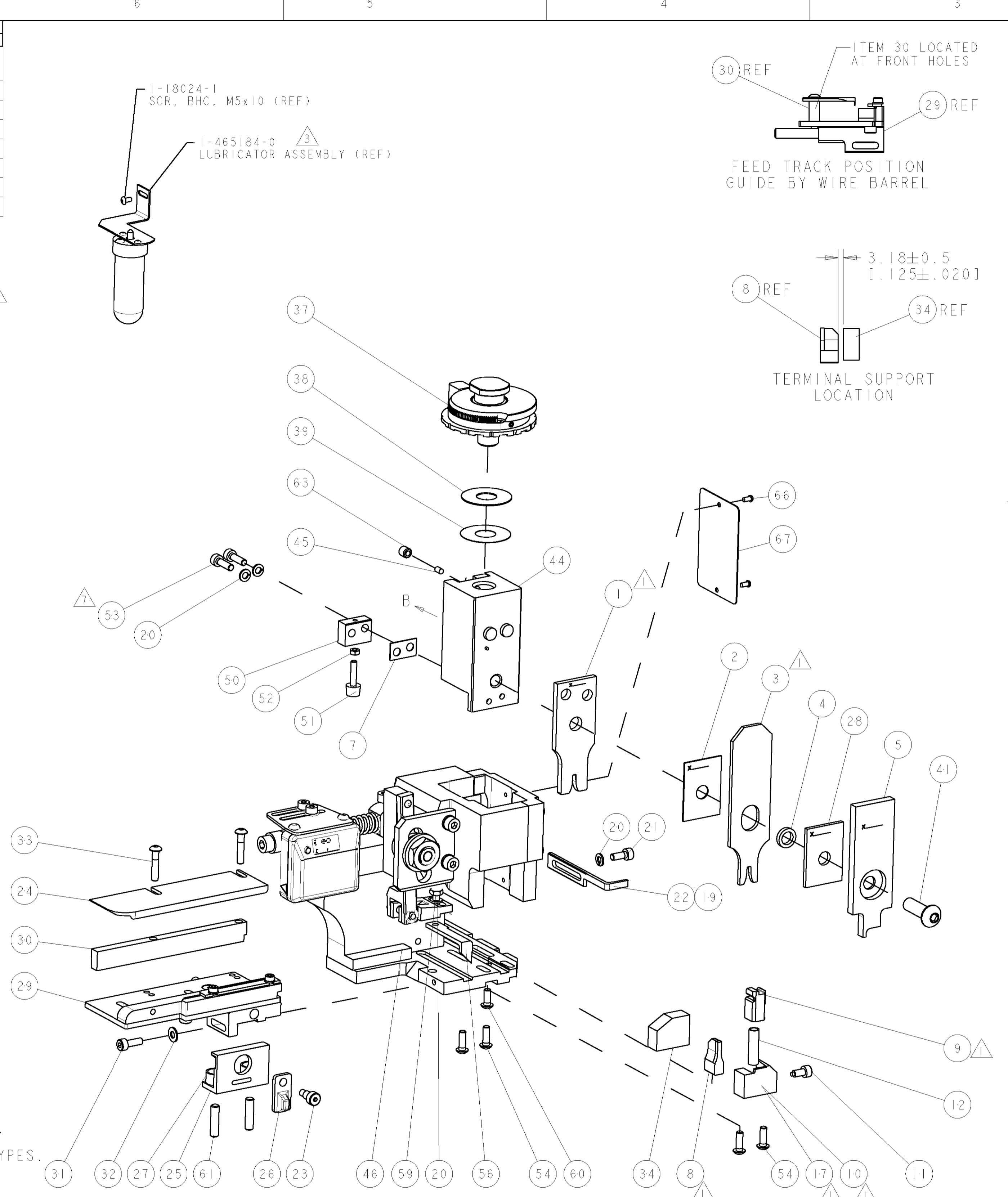


PART NUMBER	REV	TERMINATOR	FEED TYPE	DESCRIPTION
1528779-1	A	LEADMAKER	MECH POST FEED	CUTS CARRIER
1528779-2	A	BENCH	MECH PRE FEED	CUTS CARRIER
1528779-6	A	LEADMAKER	MECH POST FEED	CONTINUOUS CARRIER
7-1528779-1	A	LEADMAKER	MECH POST FEED	-1 AND SPARE PARTS
7-1528779-2	A	BENCH	MECH PRE FEED	-2 AND SPARE PARTS
7-1528779-6	A	LEADMAKER	MECH POST FEED	-6 AND SPARE PARTS
7-1528779-7	A	-	-	SPARE PARTS KIT

WIRE	SIZE	TYPE	RANGE
WIRE	2.18 [.086 IN]	F	0.50-1.25mm ²
INSUL	2.79 [.110 IN]	F	1.60-2.60 [.063-.102 IN]

WIRE SIZE	CRIMP HEIGHT	REF SETTING
1.25mm ²	1.30 ± 0.05 [.051 ± .002 IN]	B2
1.00mm ²	1.20 ± 0.05 [.047 ± .002 IN]	B9
0.85mm ²	1.15 ± 0.05 [.045 ± .002 IN]	C5
0.75mm ²	1.15 ± 0.05 [.045 ± .002 IN]	C6
0.50mm ²	1.05 ± 0.05 [.041 ± .002 IN]	D2

- △ RECOMMENDED SPARE PARTS.
- 2. GREASE RAM, CAM, CAM FOLLOWER AND FEED ROD LIGHTLY.
- △ CERTAIN TERMINALS REQUIRE LUBRICATION. REFER TO THE APPLICATOR INSTRUCTION SHEET FOR MORE INFORMATION.
- 4. LUBRICATE DAILY PER THE APPLICATOR INSTRUCTION SHEET SUPPLIED WITH THE APPLICATOR.
- △ ALL CRIMP DATA SUPPLIED BY THE TERMINAL MANUFACTURER.
- △ APPLICATOR DESIGNED TO APPLY AVS & AVSS INSULATION TYPES.
- △ CUT TO LENGTH AT ASSEMBLY.
- △ CRIMP DATA SUPPLIED BY ORIGINAL CUSTOMER.
- △ CRIMP HEIGHT CALCULATED BY TYCO ELECTRONICS UK LTD, BASED ON TERMINAL MANUFACTURERS CRIMP WIDTH.



-77	-76	-72	-71	-6	-2	-1	PART NO	DESCRIPTION	ITEM NO
-	-	-	-	-	-	-	-	-	84
-	-	-	-	-	-	-	-	-	83
-	-	-	-	-	-	-	-	-	82
-	-	-	-	-	-	-	-	-	81
-	-	-	-	-	-	-	-	-	80
-	-	-	-	-	-	-	-	-	79
-	-	-	-	-	-	-	-	-	78
-	-	-	-	-	-	-	-	-	77
-	-	-	-	-	-	-	-	-	76
-	-	-	-	-	-	-	-	-	75
-	-	-	-	-	-	-	-	-	74

LOC: A DIST: 66

REVISIONS

REV	DATE	BY	APPR
A	18APR2007	DP	MC

QTY	REV	P	LTR	DESCRIPTION	DATE	BY	APPR	ITEM NO
-	-	-	-	-	-	-	-	73
-	-	-	-	-	-	-	-	72
-	-	-	-	-	-	-	-	71
-	-	-	-	-	-	-	-	70
-	-	-	-	-	-	-	-	69
-	-	-	-	-	-	-	-	68
-	-	-	-	-	-	-	-	67
-	-	-	-	-	-	-	-	66
-	-	-	-	-	-	-	-	65
-	-	-	-	-	-	-	-	64
-	-	-	-	-	-	-	-	63
-	-	-	-	-	-	-	-	62
-	-	-	-	-	-	-	-	61
-	-	-	-	-	-	-	-	60
-	-	-	-	-	-	-	-	59
-	-	-	-	-	-	-	-	58
-	-	-	-	-	-	-	-	57
-	-	-	-	-	-	-	-	56
-	-	-	-	-	-	-	-	55
-	-	-	-	-	-	-	-	54
-	-	-	-	-	-	-	-	53
-	-	-	-	-	-	-	-	52
-	-	-	-	-	-	-	-	51
-	-	-	-	-	-	-	-	50
-	-	-	-	-	-	-	-	49
-	-	-	-	-	-	-	-	48
-	-	-	-	-	-	-	-	47
-	-	-	-	-	-	-	-	46
-	-	-	-	-	-	-	-	45
-	-	-	-	-	-	-	-	44
-	-	-	-	-	-	-	-	43
-	-	-	-	-	-	-	-	42
-	-	-	-	-	-	-	-	41
-	-	-	-	-	-	-	-	40
-	-	-	-	-	-	-	-	39
-	-	-	-	-	-	-	-	38
-	-	-	-	-	-	-	-	37
-	-	-	-	-	-	-	-	36
-	-	-	-	-	-	-	-	35
-	-	-	-	-	-	-	-	34
-	-	-	-	-	-	-	-	33
-	-	-	-	-	-	-	-	32
-	-	-	-	-	-	-	-	31
-	-	-	-	-	-	-	-	30
-	-	-	-	-	-	-	-	29
-	-	-	-	-	-	-	-	28
-	-	-	-	-	-	-	-	27
-	-	-	-	-	-	-	-	26
-	-	-	-	-	-	-	-	25
-	-	-	-	-	-	-	-	24
-	-	-	-	-	-	-	-	23
-	-	-	-	-	-	-	-	22
-	-	-	-	-	-	-	-	21
-	-	-	-	-	-	-	-	20
-	-	-	-	-	-	-	-	19
-	-	-	-	-	-	-	-	18
-	-	-	-	-	-	-	-	17
-	-	-	-	-	-	-	-	16
-	-	-	-	-	-	-	-	15
-	-	-	-	-	-	-	-	14
-	-	-	-	-	-	-	-	13
-	-	-	-	-	-	-	-	12
-	-	-	-	-	-	-	-	11
-	-	-	-	-	-	-	-	10
-	-	-	-	-	-	-	-	9
-	-	-	-	-	-	-	-	8
-	-	-	-	-	-	-	-	7
-	-	-	-	-	-	-	-	6
-	-	-	-	-	-	-	-	5
-	-	-	-	-	-	-	-	4
-	-	-	-	-	-	-	-	3
-	-	-	-	-	-	-	-	2
-	-	-	-	-	-	-	-	1
-	-	-	-	-	-	-	-	77-76-72-71-6-2-1
-	-	-	-	-	-	-	-	PART NO
-	-	-	-	-	-	-	-	DESCRIPTION
-	-	-	-	-	-	-	-	ITEM NO

SET UP GAGE 458637-3

APPR: M. CLIFFORD

DATE: 14MAR2007

PRODUCT SPEC

APPLICATION SPEC

See Table

WEIGHT

CUSTOMER DRAWING

TYCO ELECTRONICS

Tyco Electronics Harrisburg, PA 17105-3608

NAME: FINE ADJUST SIDE FEED HDI APPLICATOR

SIZE: A1

CAGE CODE: 00779

DRAWING NO: C=1528779

RESTRICTED TO

SCALE: 3:5

SHEET: 1

OF: 1

REV: A