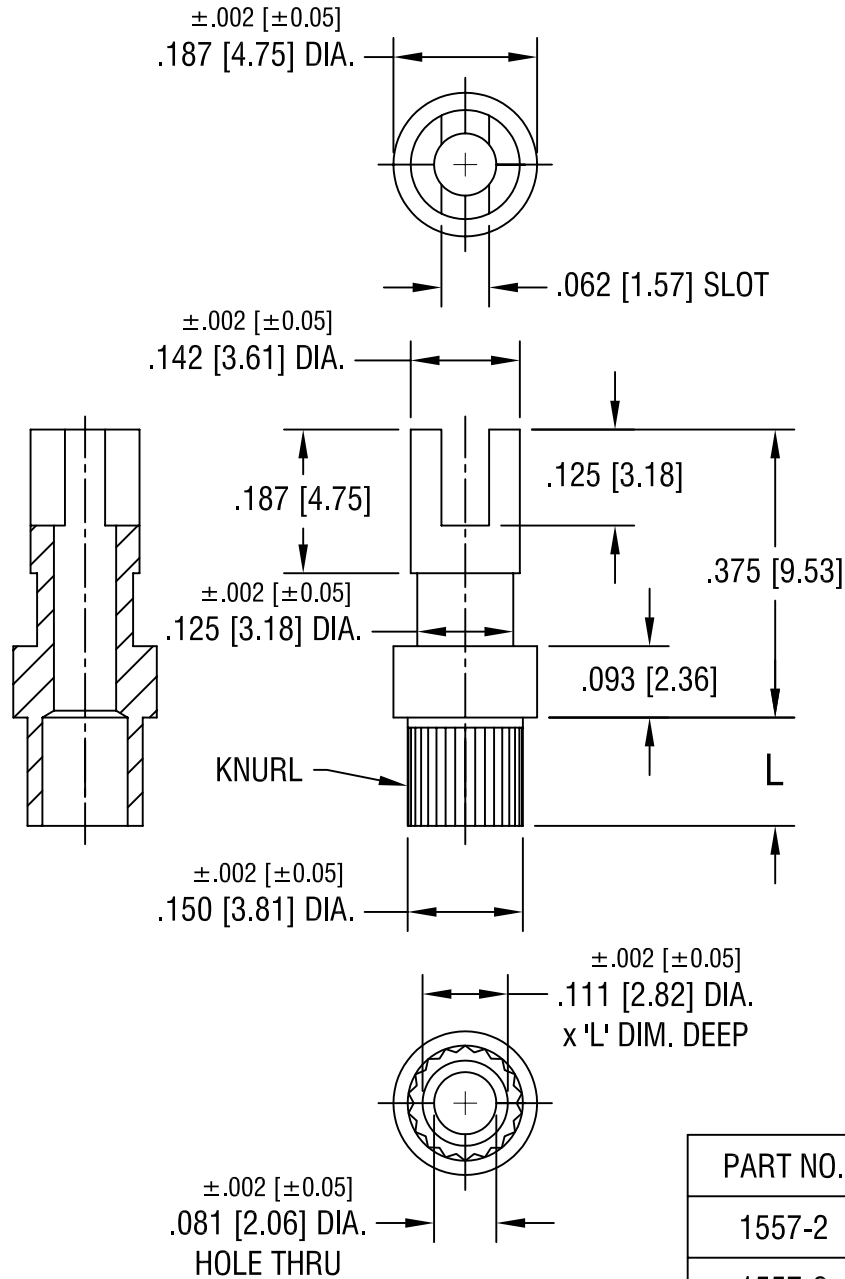


THIS DOCUMENT IS THE PROPERTY OF  
KEYSTONE ELECTRONICS CORP. AND  
SHALL NOT BE REPRODUCED, DISTRIBUTED  
OR USED AS A BASIS FOR MANUFACTURE  
WITHOUT PRIOR WRITTEN PERMISSION  
FROM KEYSTONE ELECTRONICS CORP.



PART NO.	'L' DIM.
1557-2	.109 [2.77]
1557-3	.141 [3.58]
1557-4	.172 [4.37]

**KEYSTONE ELECTRONICS CORP.**

ASTORIA, N.Y. 11105-2017

PART NAME				TERMINAL			
MATERIAL				BRASS			
FINISH		DRN BY		DATE			
TIN PLATE		BOONE		6.17.02			
		APP'D		SCALE			
		LN		4X			
TOLERANCES		INCH		[MM]		CODE	
DECIMAL		$\pm .005$		[ $\pm 0.15$ ]		C/M	
ANGULAR		$\pm 1^\circ$		UNLESS OTHERWISE SPECIFIED		DWG NO.	
						1557-	

DATE	DESCRIPTION	REV.