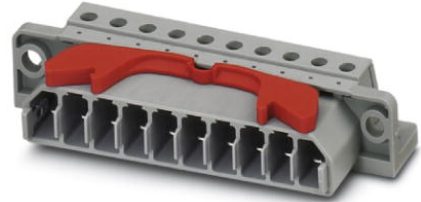


## HCC 4-M

Order No.: 1600014



<http://eshop.phoenixcontact.de/phoenix/treeViewClick.do?UID=1600014>

Plug, Type of connection: Screw connection, Screw connection, Cross section: 0.2 mm<sup>2</sup> - 4 mm<sup>2</sup>, AWG 24 - 12, Width: 92 mm, Height: 18 mm, Color: gray, Mounting type: Direct screw connection

Commercial data	
EAN	4017918021740
Pack	50 pcs.
Customs tariff	85366990
Weight/Piece	0.03736 KG
Catalog page information	Page 298 (CL-2009)

#### Product notes

WEEE/RoHS-compliant since:  
01/01/2003



<http://www.download.phoenixcontact.com>  
Please note that the data given here has been taken from the online catalog. For comprehensive information and data, please refer to the user documentation. The General Terms and Conditions of Use apply to Internet downloads.

#### Technical data

##### Dimensions / positions

Length	34.2 mm
Height	18 mm
Width	92 mm

**Technical data**

Insulating material group	I
Maximum load current	25 A (with 4 mm <sup>2</sup> conductor cross section)
Insulating material	PA
Inflammability class acc. to UL 94	V2

**Certificates / Approvals**

Certification

BV, CSA, DNV, GL, GOST, LR, UL

**CSA**

Nominal voltage U <sub>N</sub>	300 V
Nominal current I <sub>N</sub>	20 A
AWG/kcmil	28-10

**UL**

Nominal voltage U <sub>N</sub>	300 V
Nominal current I <sub>N</sub>	20 A
AWG/kcmil	30-10

**Accessories**

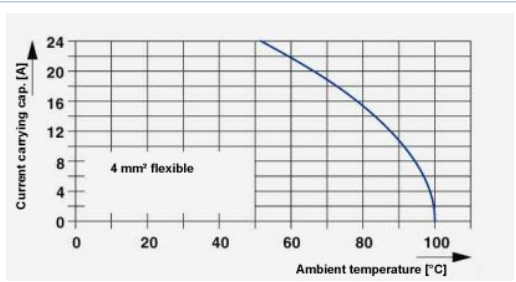
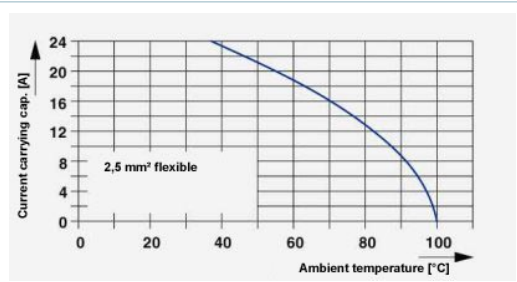
Item	Designation	Description
<b>Plug/Adapter</b>		
1600027	CP-HCC 4	Keying profile for contact inserts, Color: red
3100224	HCC 4-SR	Strain relief, Color: gray
<b>Tools</b>		
1205053	SZS 0,6X3,5	Screwdriver, bladed, matches all screw terminal blocks up to 4.0 mm <sup>2</sup> connection cross section, blade: 0.6 x 3.5 mm, without VDE approval

**Additional products**

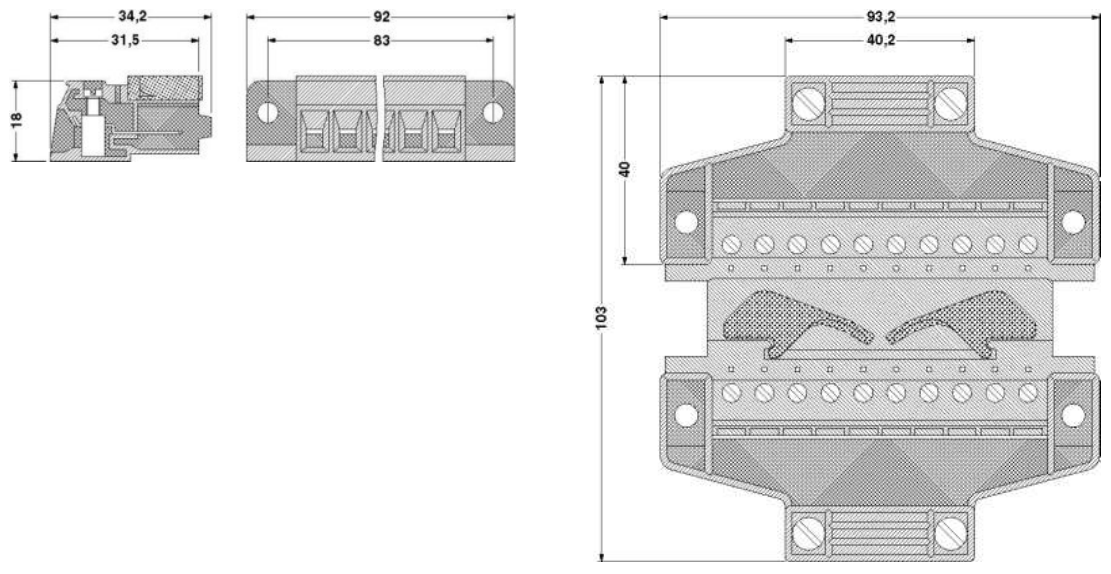
Item	Designation	Description
<b>General</b>		
1600001	HCC 4-F	Female insert, Type of connection: Screw connection, Screw connection, Cross section: 0.2 mm <sup>2</sup> - 4 mm <sup>2</sup> , AWG 24 - 12, Width: 92 mm, Height: 18 mm, Color: gray

**Drawings**

Diagram



Dimensioned drawing



**Address**

PHOENIX CONTACT Inc., USA  
586 Fulling Mill Road  
Middletown, PA 17057, USA  
Phone (800) 888-7388  
Fax (717) 944-1625  
<http://www.phoenixcon.com>



© 2009 Phoenix Contact  
Technical modifications reserved;