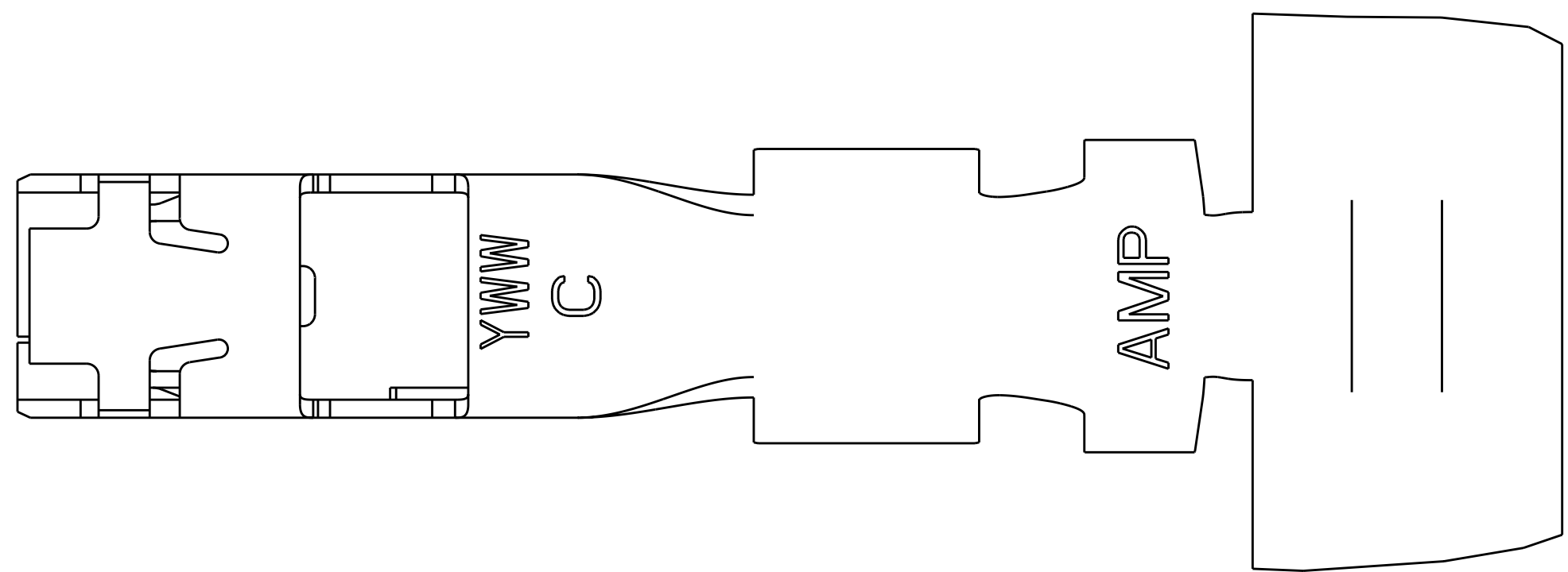
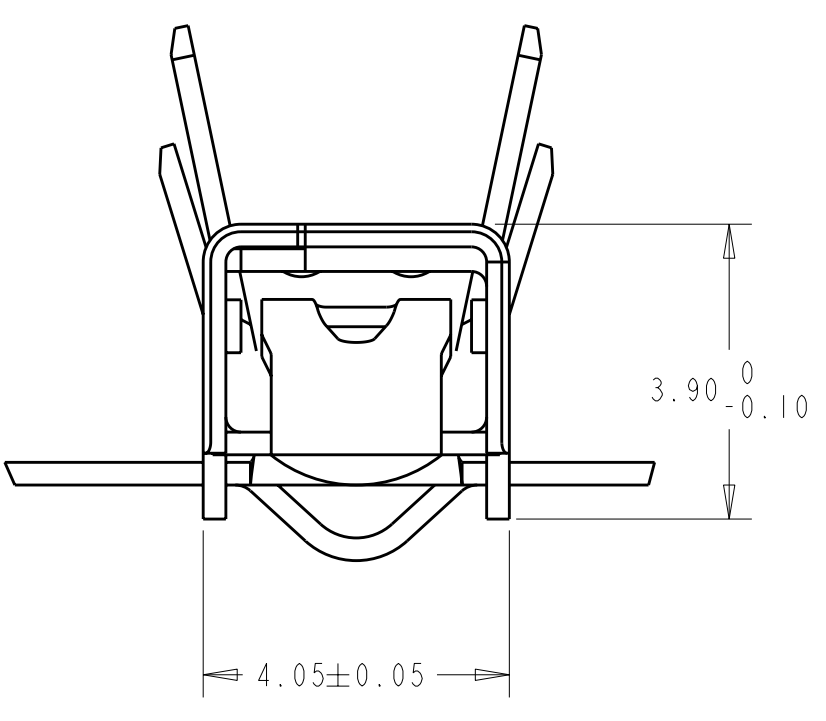
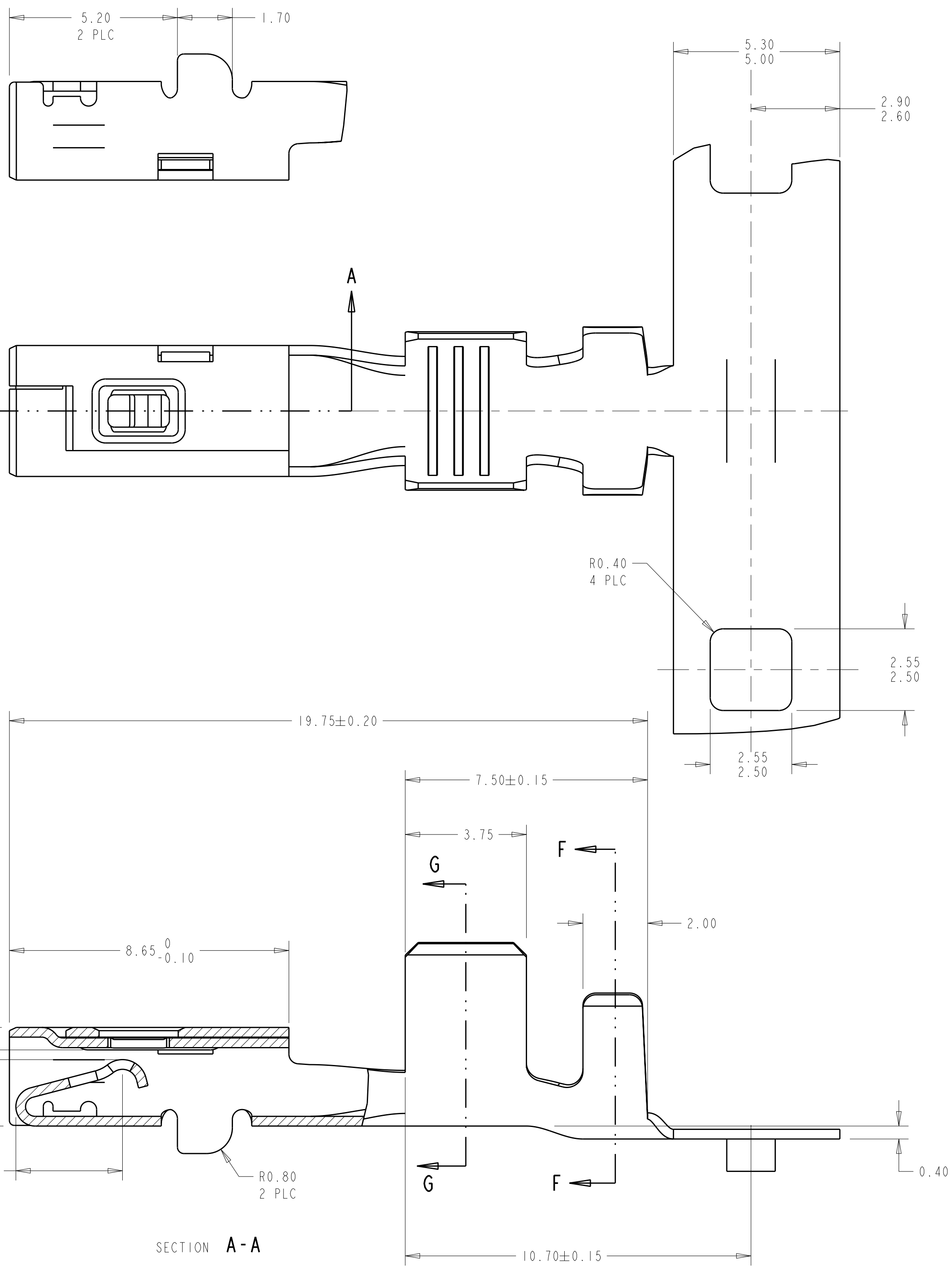


DUAL CRIMP TABLE	
PART NO	WIRE SIZE
1326030-9 AND 1-1326030-1	0.35+0.35
	0.35+0.5
	0.35+0.75
	0.35+1.0
1-1326030-0 AND 1-1326030-2	0.5+0.5
	0.5+0.75
	0.35+1.5
	0.5+1.0
	0.5+1.5
	0.75+0.75
	0.75+1.0
	0.75+1.5
	1.0+1.0
	1.0+1.5

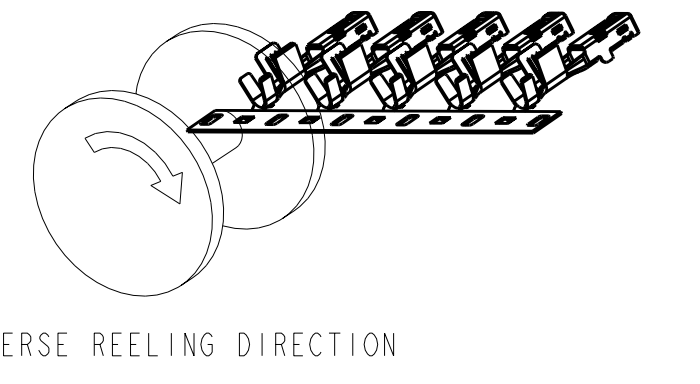
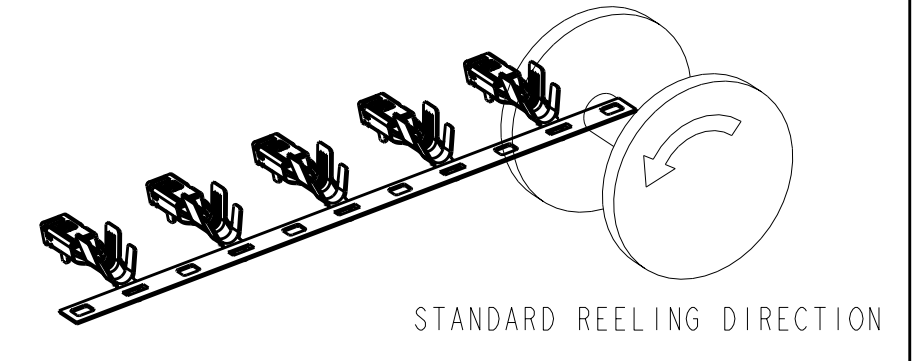


LOC	DIST	REV	DATE	BY	CHK	APPV
GE	00	H2	26APR2011	RK	HMR	

REVISIONS

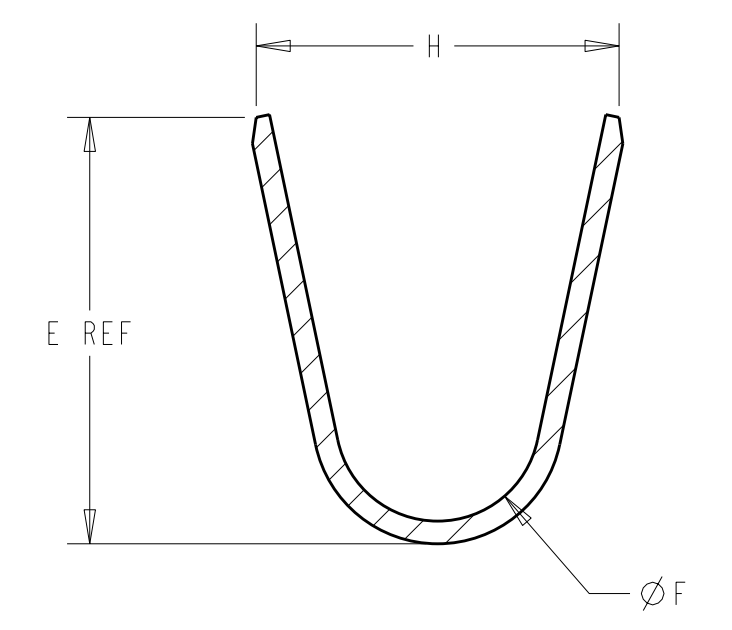
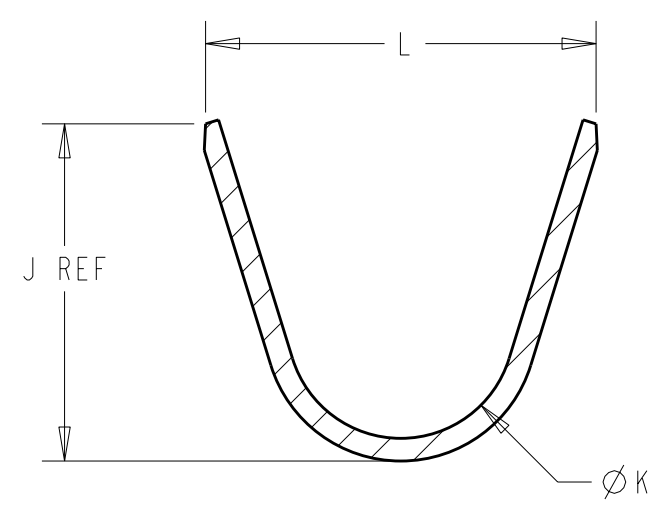
△ MATERIAL: 0.30 THICK COPPER ALLOY, PREPLATED WITH 0.0008 MINIMUM THICK REFLOW TIN OR BRIGHT TIN (ELV COMPLIANT).

△ ALTERNATE MATERIAL: 0.30 THICK COPPER ALLOY, PREPLATED WITH 0.0008 MINIMUM THICK BRIGHT TIN (ELV COMPLIANT).



5. QUALIFICATION OF THE CRIMP APPLICATION TOOLING SHALL BE CONTROLLED BY THE REQUIREMENTS ESTABLISHED UNDER USCAR 21.

6. LOOSE END SPLICING TO BE USED.



REV	DESCRIPTION	REFERENCE DUAL CRIMP TABLE	PART NO.
3	1-1326030-0 REELED FOR AMP APPLICATOR	REFERENCE DUAL CRIMP TABLE	1-1326030-2
	1326030-9 REELED FOR AMP APPLICATOR	REFERENCE DUAL CRIMP TABLE	1-1326030-1
2	4.6 1.80 5.35 3.9 1.70 3.88	REFERENCE DUAL CRIMP TABLE	1-1326030-0
	3.6 1.40 4.32 3.3 1.30 2.76	REFERENCE DUAL CRIMP TABLE	1326030-9
3	1326030-4 REELED FOR AMP APPLICATORS	12 AWG	1326030-8
	1326030-3 REELED FOR AMP APPLICATORS	14-16 AWG	1326030-7
	1326030-2 REELED FOR AMP APPLICATORS	18-20 AWG	1326030-6
	1326030-1 REELED FOR AMP APPLICATORS	22 AWG	1326030-5
2	5.2 3.20 4.22 4.7 2.70 5.25	12 AWG	1326030-4
	3.8 1.80 3.16 3.9 1.70 3.88	14-16 AWG	1326030-3
	3.1 1.40 2.55 3.3 1.30 2.76	18-20 AWG	1326030-2
	2.6 1.00 2.04 2.5 0.90 2.11	22 AWG	1326030-1
	REELING L ØK J H ØF E WIRE SIZE PART NO.		

THIS DRAWING IS A CONTROLLED DOCUMENT.

DMN: D. STRAUSSER 28APR99
CHK: D. BROWN 28APR99
APPV: D. BROWN 28APR99

TE Connectivity

2.8mm RECEPTACLE, UNSEALED

SAE/USCAR-2 8/97

114-13013

00779 C=1326030

SCALE: 10:1 SHEET 1 OF 1 REV: H2