

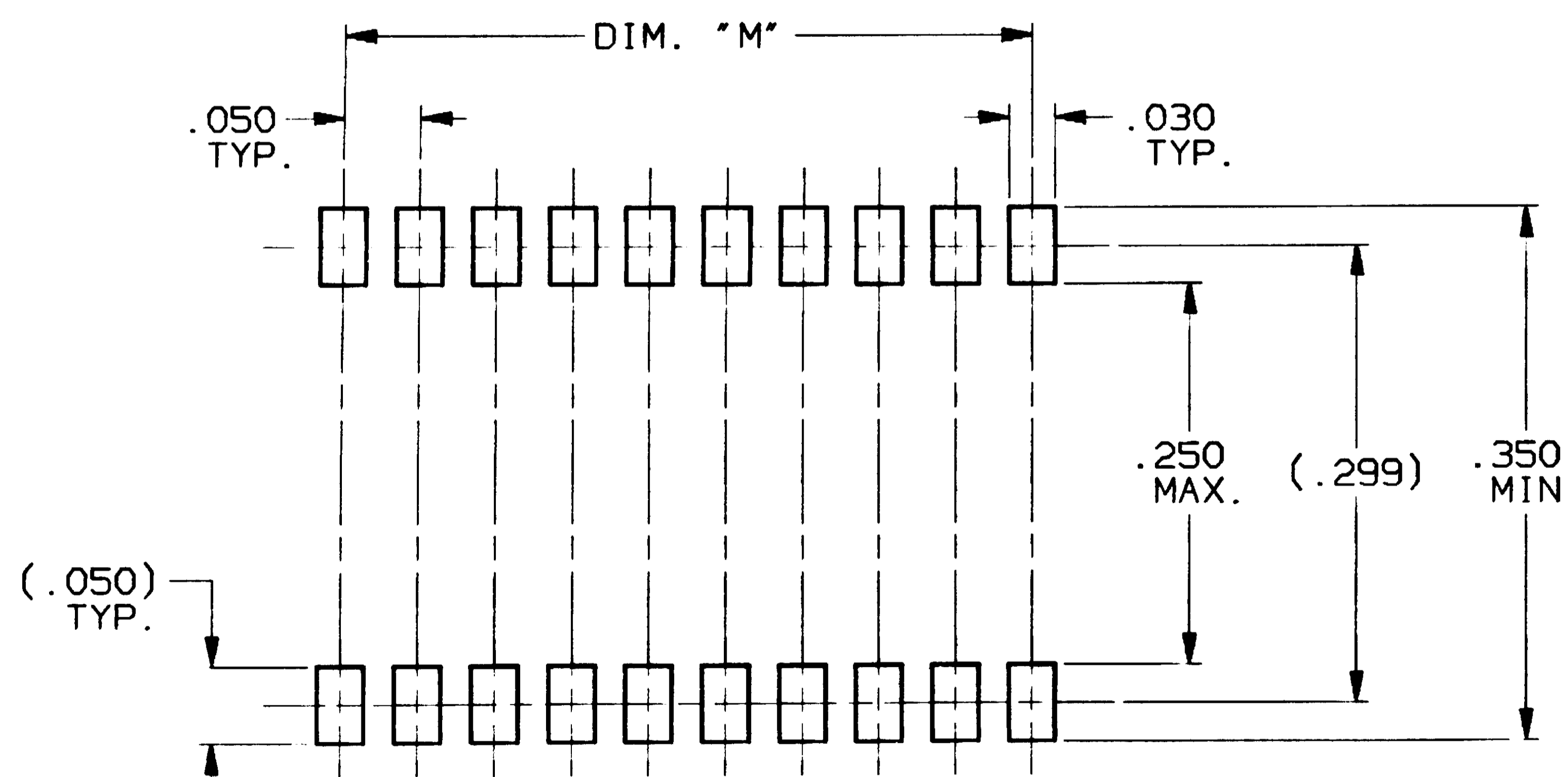
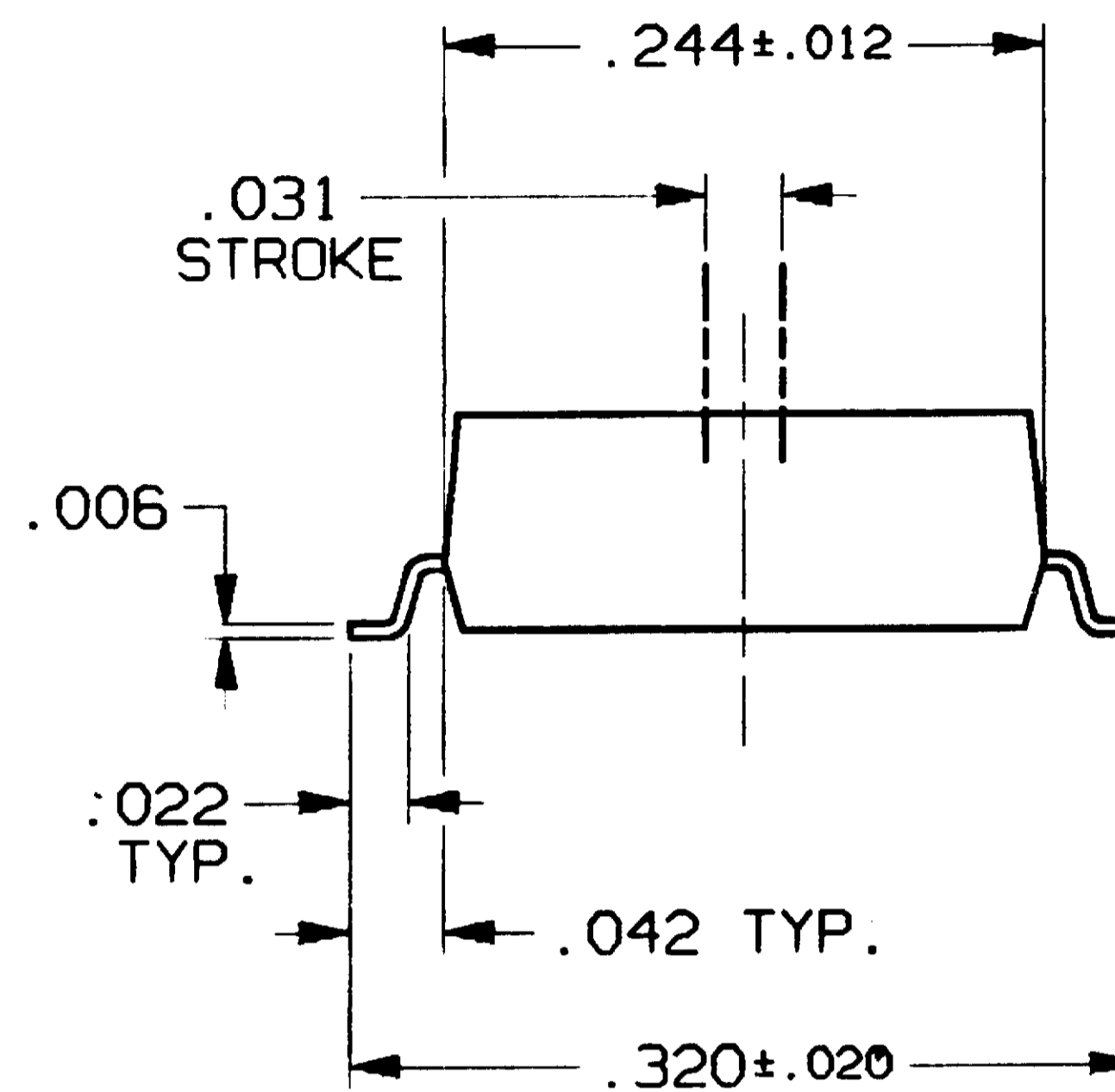
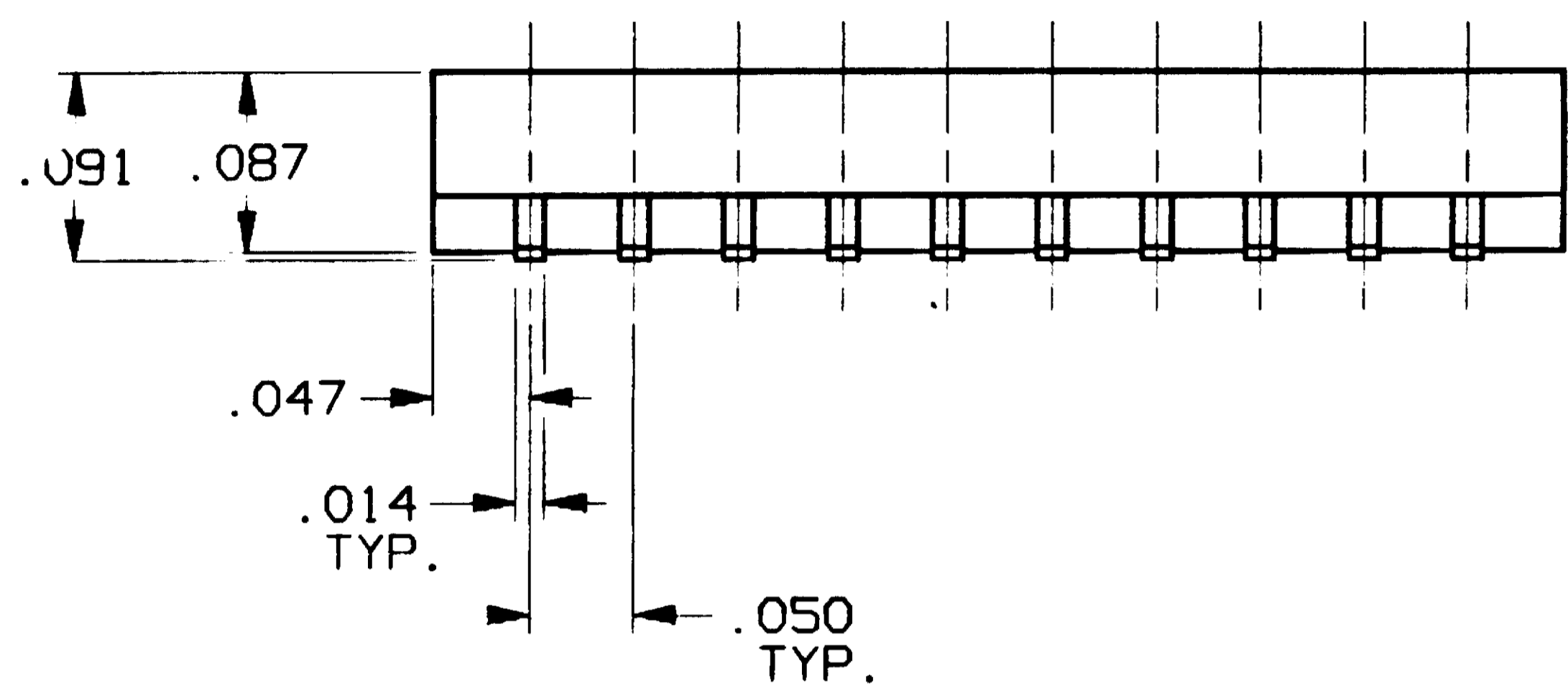
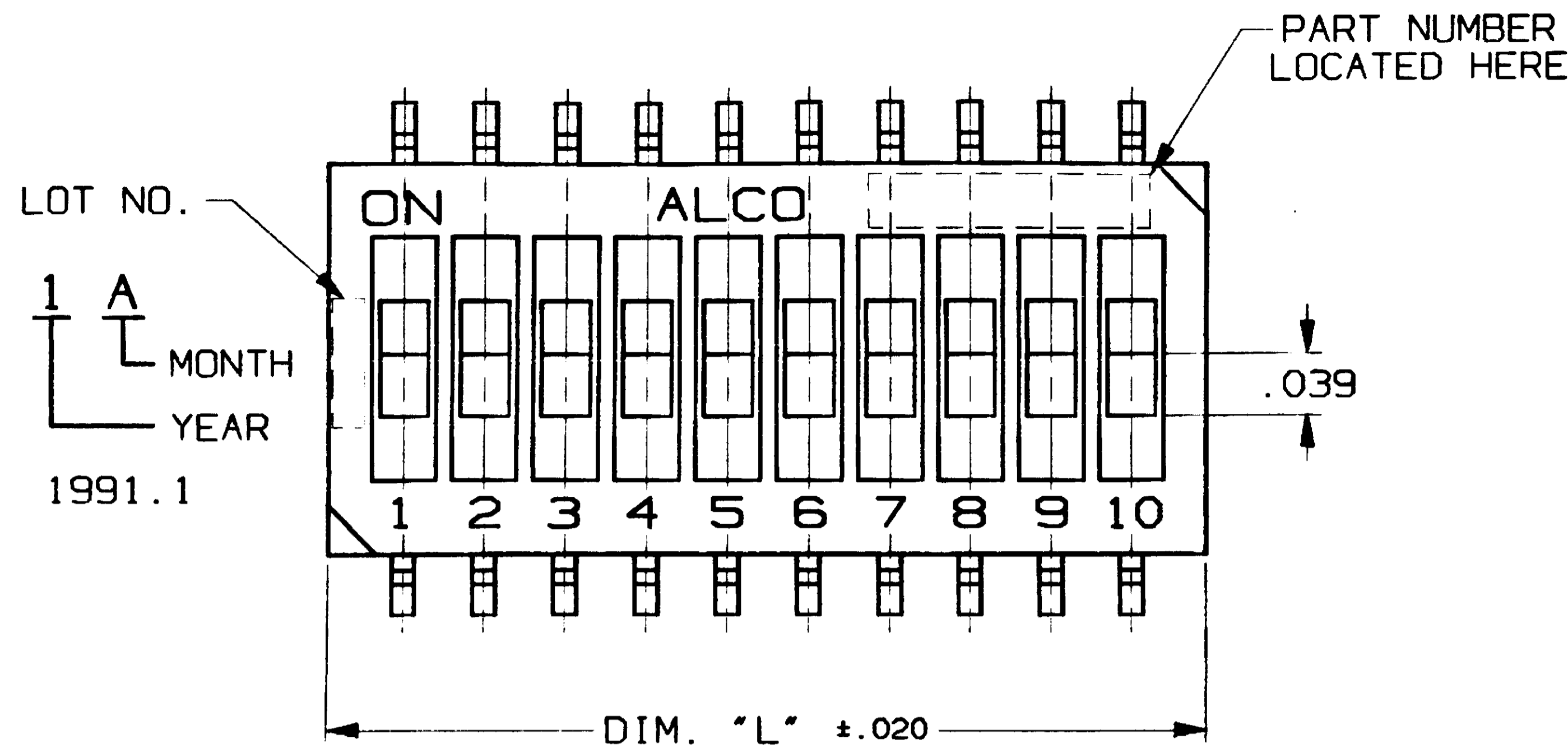
4

3

2

1

CONVERSION CHART	
INCH	MM
.002	0.05
.004	0.10
.006	0.15
.008	0.20
.010	0.25
.012	0.30
.014	0.35
.020	0.50
.022	0.57
.030	0.76
.031	0.80
.039	1.00
.042	1.06
.047	1.20
.050	1.27
.087	2.20
.091	2.30
.144	3.67
.150	3.81
.244	6.20
.250	6.35
.299	7.60
.320	8.12
.344	8.75
.350	8.89
.444	11.29
.450	11.43
.544	13.83



P.C.B. PAD LAYOUT

PCB LAYOUT TOLERANCES ±.002 ON ALL DIMENSIONS

4 SPECIFICATIONS:

MATERIALS:
 BASE: PPS
 COVER: PPS
 ACTUATOR: HIGH TEMPERATURE POLYESTER.
 MOVING CONTACTS: COPPER ALLOY, GOLD OVER NICKEL PLATED.
 FIXED CONTACTS: COPPER ALLOY, GOLD OVER NICKEL PLATED.
 TERMINALS: COPPER ALLOY, TIN-LEAD OVER NICKEL PLATED.

ELECTRICAL:
 CONTACT RATING: NON-SWITCHING 100mA @ 50 VDC
 SWITCHING: 25mA @ 24 VDC.
 INITIAL CONTACT RESISTANCE: 100mΩ MAX. @ 2 VDC, 10 mA.
 INSULATION RESISTANCE: 100 MEGOHMS MIN. @ 100 VDC.
 DIELECTRIC STRENGTH: 300 VAC. 1 MINUTE.
 LIFE: 1,000 CYCLES.

MECHANICAL:
 OPERATING FORCE: 600G MAX.

ENVIRONMENTAL:
 OPERATING TEMPERATURE: -22°F TO +185°F (-30°C TO +85°C).
 STORAGE TEMPERATURE: -49°F TO +212°F (-45°C TO +100°C).

4 NOTES:

1. INTERPRET DRAWING PER ASME Y14.5M-1994.
2. SUPPLIED WITH TAPE SEAL STANDARD.
3. FOR TAPE AND REEL PACKAGING- PART NO. GDHXXSTR SEE MODEL NUMBER CHART BELOW.
4. FOR TUBE PACKAGING REFER TO DRAWING NO. 100742.
5. FOR NO SEAL OPTION = NS.

NO SEAL OPTION	MODEL	POLE	DIM.L	DIM.M
GDH02SNS	GDH02S	2	.144	.050
GDH04SNS	GDH04S	4	.244	.150
GDH06SNS	GDH06S	6	.344	.250
GDH08SNS	GDH08S	8	.444	.350
GDH10SNS	GDH10S	10	.544	.450

NO SEAL OPTION	MODEL No.	CARRIER TAPE P/N	TAPE COVER P/N	REEL P/N
GDH02STRNS	GDH02STR	100648-1P1	100517-1P3	100552-1P3
GDH04STRNS	GDH04STR	100648-1P2	100517-1P3	100552-1P3
GDH06STRNS	GDH06STR	100648-1P3	100517-1P3	100552-1P3
GDH08STRNS	GDH08STR	100648-1P4	100517-1P4	100552-1P4
GDH10STRNS	GDH10STR	100648-1P5	100517-1P4	100552-1P4

4

OUTLINE DRAWING

SPECIFICATIONS ARE SUBJECT TO CHANGES WITHOUT NOTICE

THIRD ANGLE PROJECTION

UNLESS OTHERWISE SPECIFIED DIMENSIONS ARE IN INCHES DO NOT SCALE PRINT

FILE NAME: 80968OUT	DIRECTORY: DIPSWTCH	ORIGINAL DATE OF DRAWING: 7-29-91
MATERIAL: SEE SPECIFICATIONS	FINISH: SEE SPECIFICATIONS	DRAWN: B. RUHMSHOTTEL DATE: 7-29-91
		CHECKED: C. MORAN DATE: 8-28-91
		APPROVED: J. SYLVIA DATE: 9-10-91
		CODE IDENT. NO. 91506
		DWG. SIZE C
		NEXT ASSY:

TOLERANCES (EXCEPT AS NOTED)
 ANGULAR = ±1°
 DECIMAL .XX = ±
 DECIMAL .XXX = ±.010
 DECIMAL .XXXX = ±

AUGAT CONFIDENTIAL
 This document contains information which is the exclusive property of Augat Inc.
 Distribution, reproduction or use by others is not permitted without the expressed written consent of Augat Inc.

THIS IS A C.A.D. GENERATED DRAWING. DO NOT MAKE MANUAL REVISIONS TO MASTER.

AUGAT INC. 452 JOHN DIETSCH BLVD. ATTLEBORO FALLS, MASS. 02763

TITLE: **OUTLINE DRAWING**
DIP SWITCH
GDH SERIES

DWG. NO. 80968 REV. 6

PRODUCT CODE: D26

SCALE: SHEET 1 OF 1

REV	0	1	2	3	4	5	6
REVISIONS	INITIAL RELEASE ESR#4460 BR 7-29-91 APP'D: JS 9-10-91	REVISED ECO#1217-93 CMM 1-18-94 APP'D: J. SYLVIA 1-19-93	REVISED ECO#23-94 SEK 6-28-94 APP'D: MLL 6-29-94	REVISED ECO#651-94 C. THEODORE 8-24-94 APP'D: D. SARKISIAN 8-24	REVISED ECO#392-95 SEK 5-23-95 APP'D: D. SARKISIAN 6-6	REVISED ECO# 300-96 L.S. 5-13-96 APP'D: W. MONTAGUE 5-14-96	REVISED ECO# 40-97 CAT 2-26-97 APP'D: S.C. 5/1/97

4

3

2

1