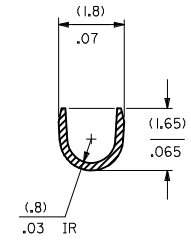
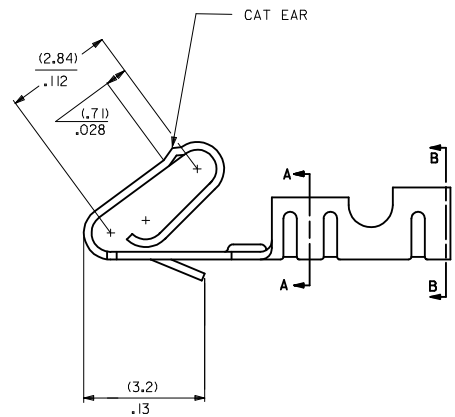
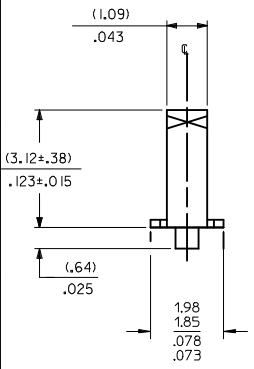
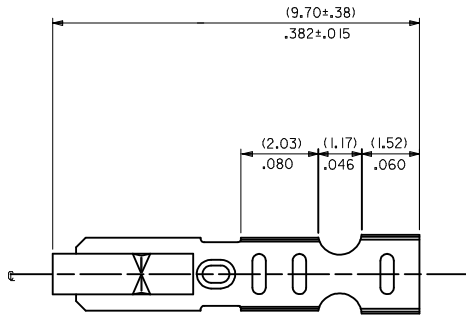
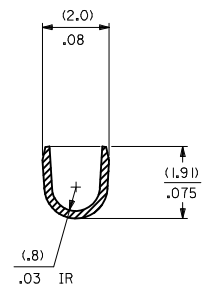


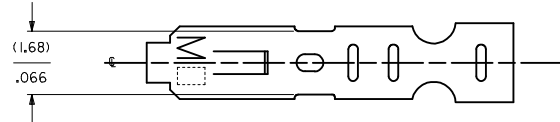
- NOTES:
1. MATERIAL: PHOS BRONZE
  2. FINISH: SEE LEGEND
  3. PRODUCT SPECIFICATION: PS-10-07
  4. PACKAGING: LOOSE TERMINALS: PER PK-2759-001  
CHAIN FORM TERMINALS: PER PK-6459-001
  5. INSERTION FORCE OF TERMINAL INTO (2.54)/.100 CL HOUSING IS 11.1 N / 2.5 LBS MAX.
  6. TERMINAL RETENTION IN HOUSING IS 26.7N / 6LBS MIN. WHEN PULLED AT THE RATE OF 25.4MM / 1 INCH PER MINUTE.
  7. DIMENSIONS GIVEN ACROSS CENTERLINES ARE SYMMETRICAL ABOUT THOSE CENTERLINES WITHIN HALF THE TOTAL TOLERANCE.
  8. CRIMP IS FOR 22-30 GA WIRE WITH (1.57)/.062 DIA. INSULATION MAX.
  9. THIS PART CONFORMS TO CLASS B REQUIREMENTS OF COSMETIC SPECIFICATION PS-45499-002.



SECTION A-A  
BACKGROUND OMITTED



SECTION B-B  
BACKGROUND OMITTED



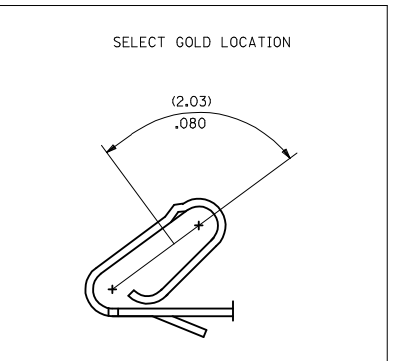
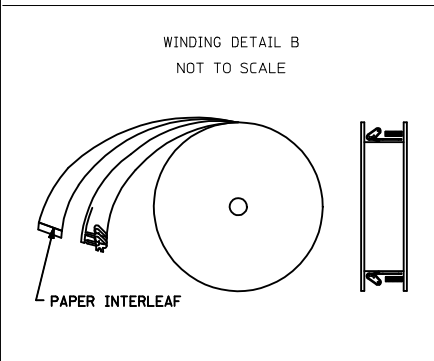
41572-\*(\*\*\*)\*

MATERIAL: A= SEE NOTE 1

FORM: L=LOOSE, BLANK=CHAIN PER DETAIL B

PLATING: (P909) OVERALL HOT TIN DIP: (0.00254)/.000100 MIN. (154) OVERALL TIN: (0.00254)/.000100 MIN. OVER (0.00127)/.000050 MIN. NICKEL

PART NO.	ENG NO.
08-65-0804	41572-A(P909)
08-65-0805	41572-A(P909)L
41572-0002	41572-A(154)



ADD PK-6459-001 EC NO: UCP2014-0151 DRWN:KIPPER 2013/07/18 CHKD:ANDERSON 2013/07/18 APPR:FSMITH 2013/07/24	QUALITY SYMBOLS ∇=0 ∇=0 ∇=0	GENERAL TOLERANCES (UNLESS SPECIFIED) <table border="1"> <tr> <th></th> <th>mm</th> <th>INCH</th> </tr> <tr> <td>4 PLACES</td> <td>± .010</td> <td>± .0004</td> </tr> <tr> <td>3 PLACES</td> <td>± .015</td> <td>± .0006</td> </tr> <tr> <td>2 PLACES</td> <td>± .025</td> <td>± .0010</td> </tr> <tr> <td>1 PLACE</td> <td>± .038</td> <td>± .0015</td> </tr> <tr> <td>0 PLACE</td> <td>± .050</td> <td>± .0020</td> </tr> </table>		mm	INCH	4 PLACES	± .010	± .0004	3 PLACES	± .015	± .0006	2 PLACES	± .025	± .0010	1 PLACE	± .038	± .0015	0 PLACE	± .050	± .0020	DIMENSION STYLE MM/IN	SCALE 10:1	DESIGN UNITS INCH	THIRD ANGLE PROJECTION
		mm	INCH																					
	4 PLACES	± .010	± .0004																					
	3 PLACES	± .015	± .0006																					
2 PLACES	± .025	± .0010																						
1 PLACE	± .038	± .0015																						
0 PLACE	± .050	± .0020																						
DRAWN BY: SAMIEC CHECKED BY: PATEL APPROVED BY:	DATE: 1993/03/19	TITLE: KK (2.54)/.100 CRIMP TERMINAL 22-30 GA 6459 WITH CAT EAR	molex SD-41572																					
MATERIAL NO. SEE CHART DRAFT WHERE APPLICABLE MUST REMAIN WITHIN DIMENSIONS	DATE:	DOCUMENT NO. SD-41572																						
REV: G1	SIZE: C	THIS DRAWING CONTAINS INFORMATION THAT IS PROPRIETARY TO MOLEX INCORPORATED AND SHOULD NOT BE USED WITHOUT WRITTEN PERMISSION																						