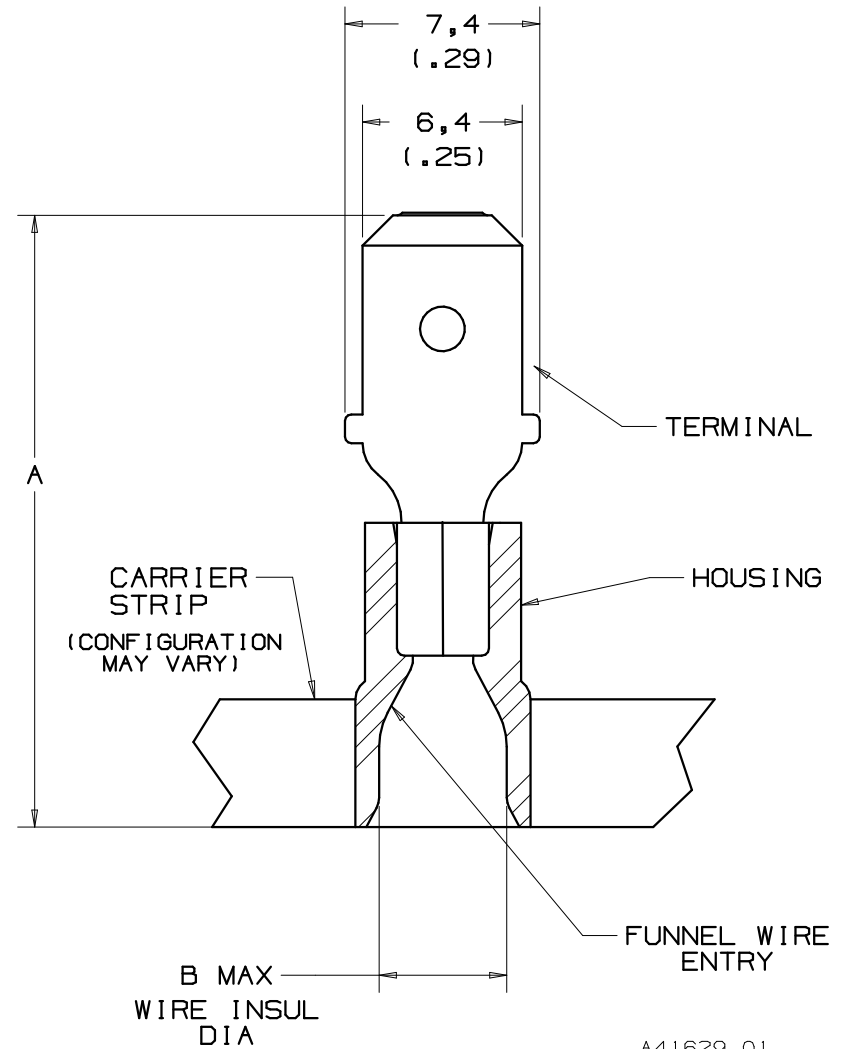


THIS COPY IS PROVIDED ON A RESTRICTED BASIS AND IS NOT TO BE USED IN ANY WAY DETRIMENTAL TO THE INTERESTS OF PANDUIT CORP.

PANDUIT PART NUMBER	WIRE RANGE mm (AWG)	COLOR CODE	DIMENSIONS mm		STRIP LENGTH +0,8 (+1/32) -0 (-0)
			A ± <sup>0,8</sup> <sub>(.03)</sub>	B	
DMV1-63MB-3K	0,5-1,5 (22-18)	RED	22,9 (.90)	3,9 (.16)	7,1 (9/32)
DMV2-63MB-3K	1,5-2,5 (18-14)	BLUE	22,9 (.90)	4,5 (.18)	7,1 (9/32)
* DMV6-63M-2K	4,0-6,0 (12-10)	YELLOW	24,4 (.96)	6,1 (.24)	8,7 (11/32)

NOTES :

- CSA CERTIFIED FOR :  
A. 600 V MAX. VOLTAGE RATING  
B. 90°C (194°F) MAX. TEMP. RATING OF INSULATION  
C. STRANDED AWG COPPER WIRE ONLY
- MATERIAL :  
A. STAMPING - 0,8 (.03) THK COPPER, TIN PLATED  
B. HOUSING - VINYL
- DIMENSIONS IN BRACKETS ARE IN INCHES
- PACKAGE QUANTITY: 3K= 3000 PCS, 2K= 2,000 PCS



CERTIFIED LR31212

\* EXCEPT DMV6-63M-2K

		PANDUIT PRESS					
		CP-851 <i>DISCONTINUED</i>	CP-860 <i>DISCONTINUED</i>	CP-861	CP-862	CP-871 60HZ	CP-871/E 50HZ
APPLICATORS	CA-800		X	X			
	CA-800EZ	X				X	X
	CA9				X	X	X

							<b>PANDUIT</b> CORP.		TINLEY PARK, ILLINOIS		
01	3/06	DAW	DAW	ADDED PANDUIT PRESS & APPLICATOR CHART	TR00083			REELSMART™, DISCO™ 2 PC. METRIC VINYL INSULATED, 6,3 X 0,8 MALE TAB			
00	9/97	TM	WJB	RELEASED	6192	LA	DBH				
REV	DATE	BY	CHK	DESCRIPTION	ECN#	CUST	PM	DRAWN BY	CHK'D	SCALE	DRAWING NO.
								T SMA		NONE	A41629