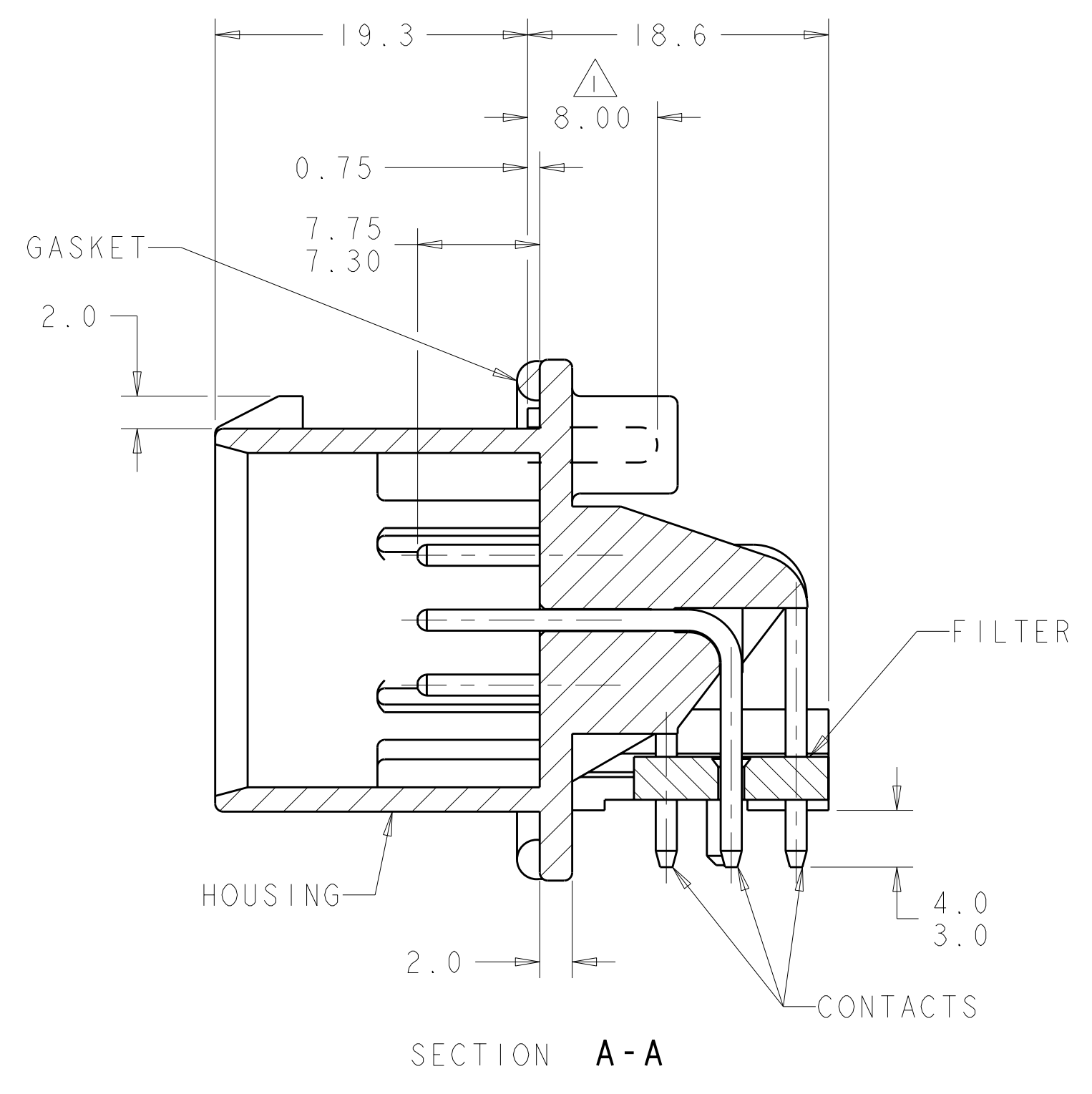
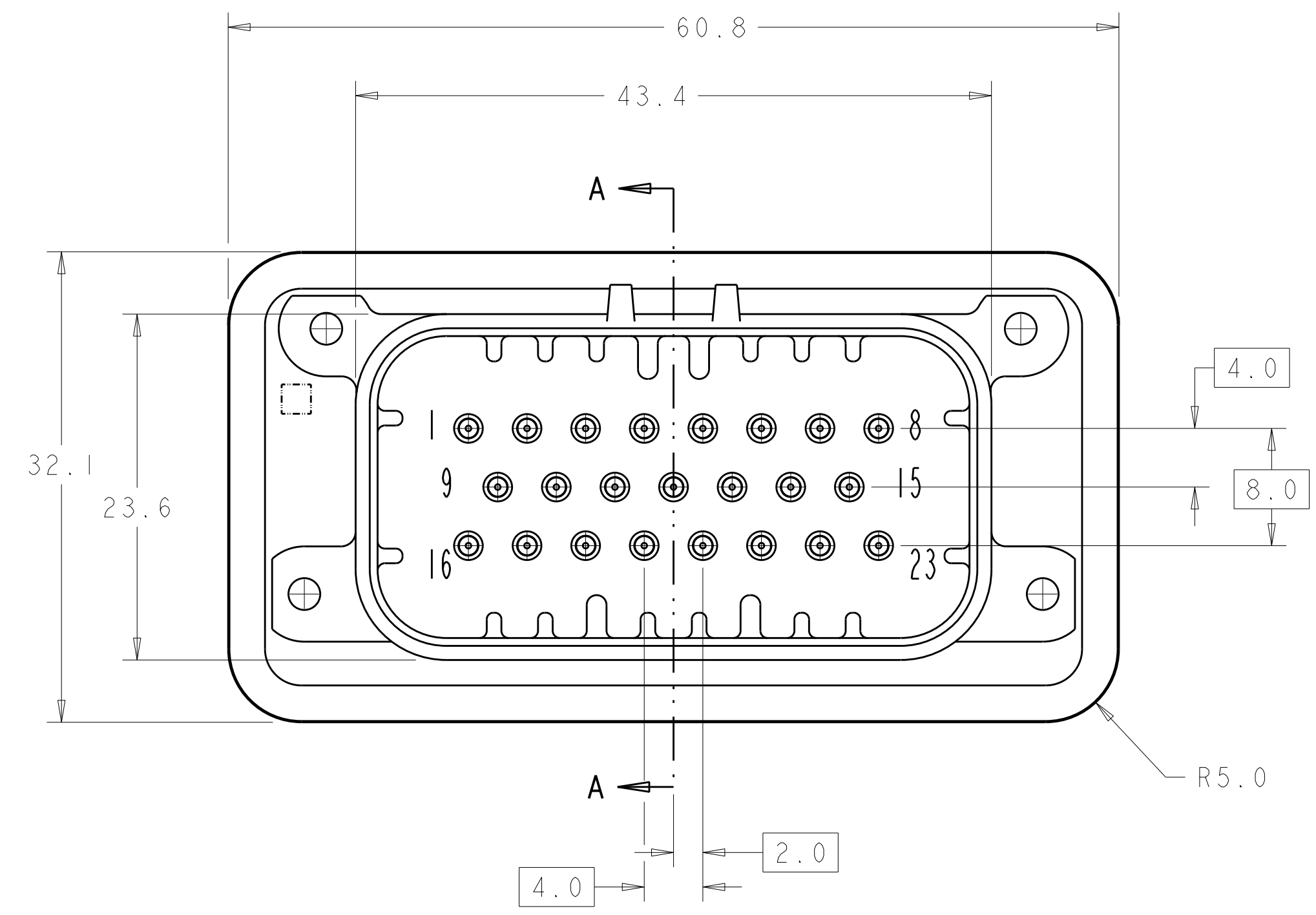
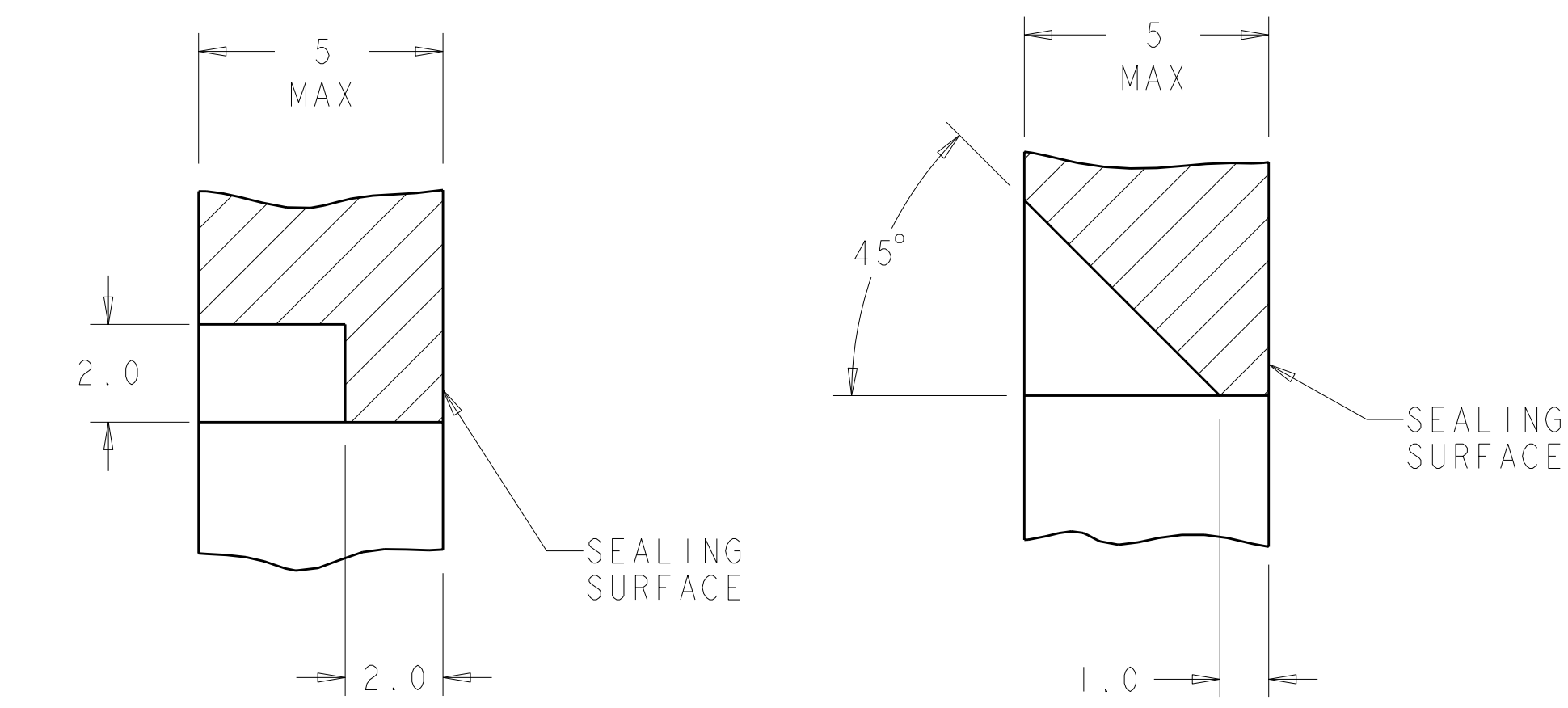
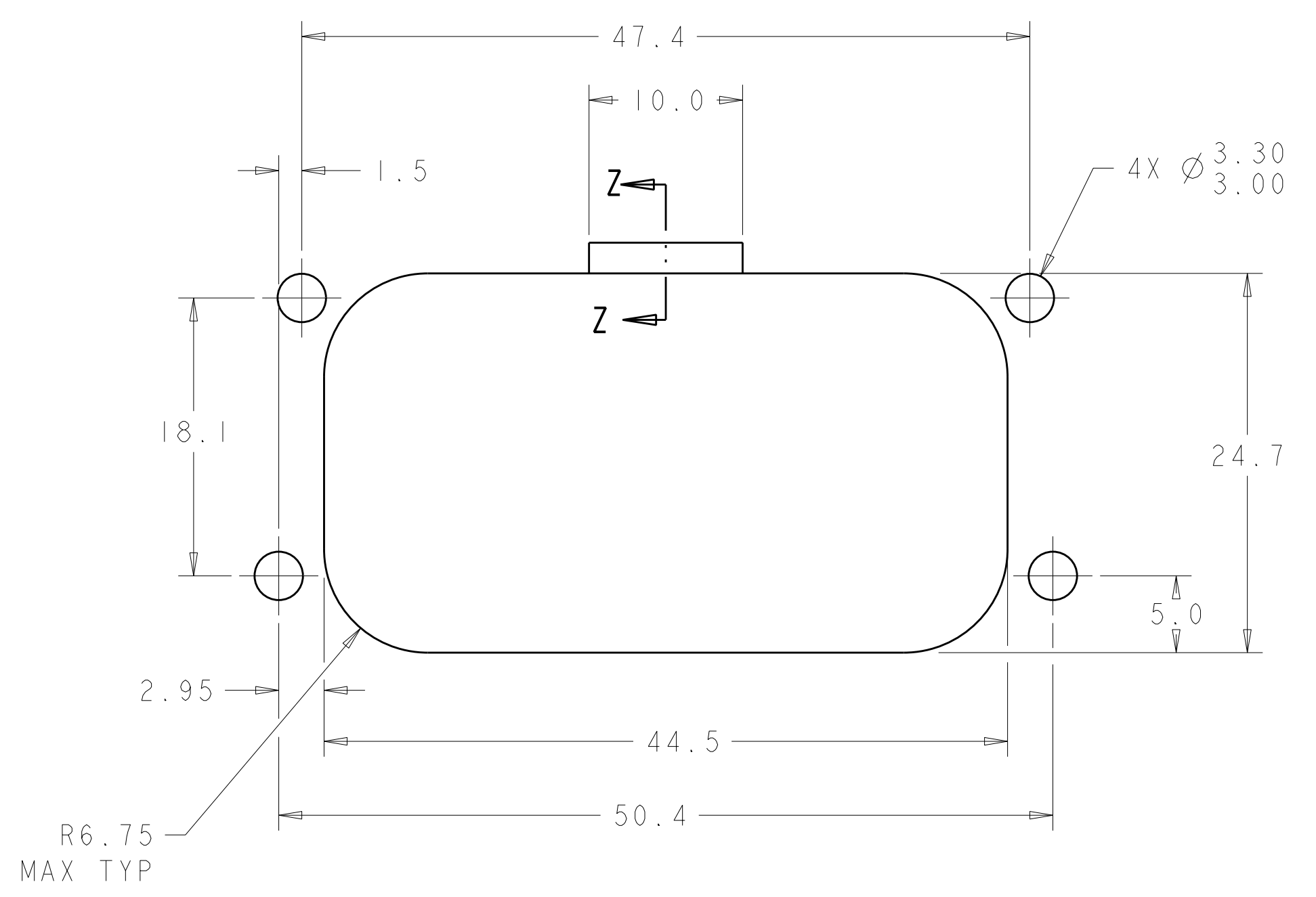
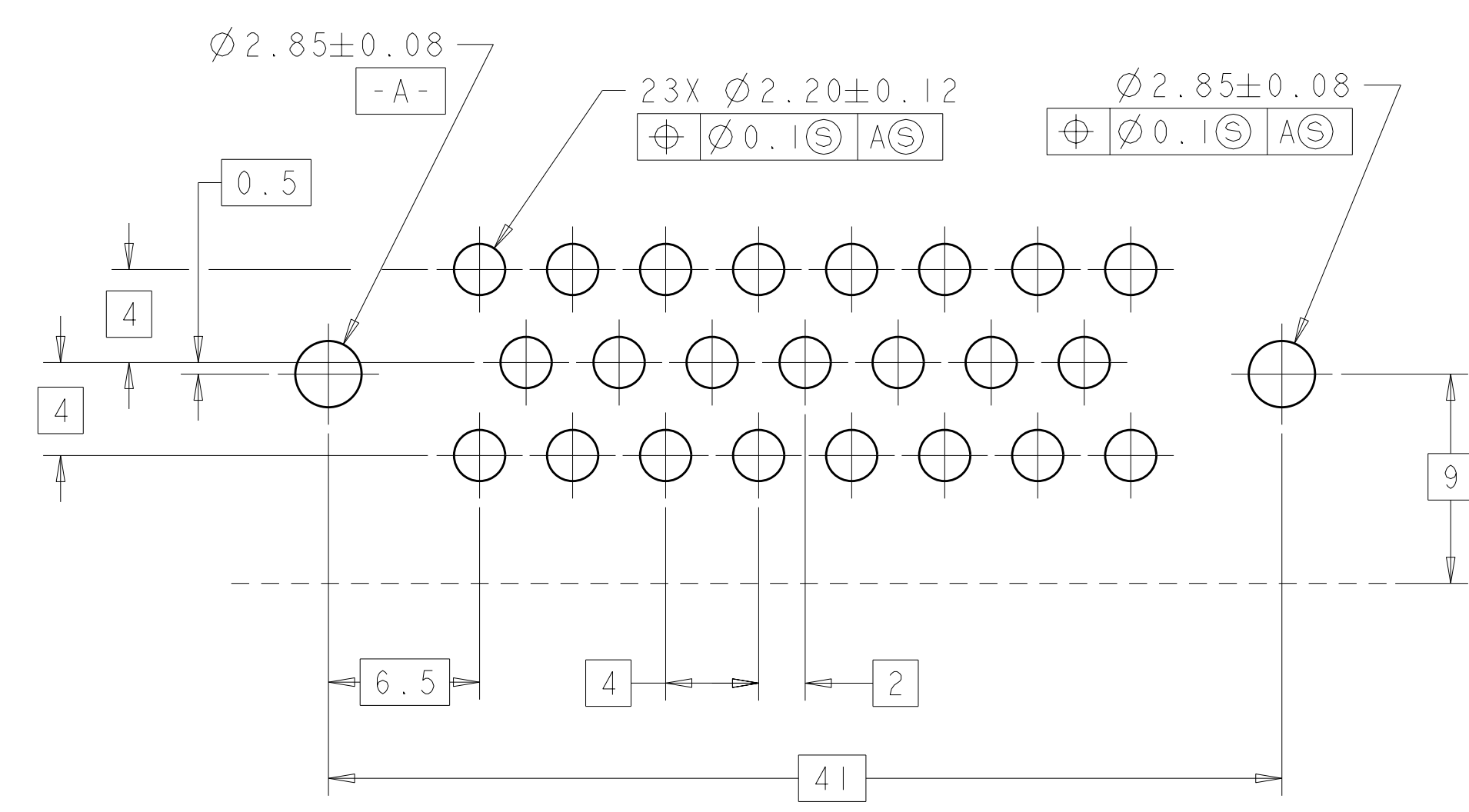
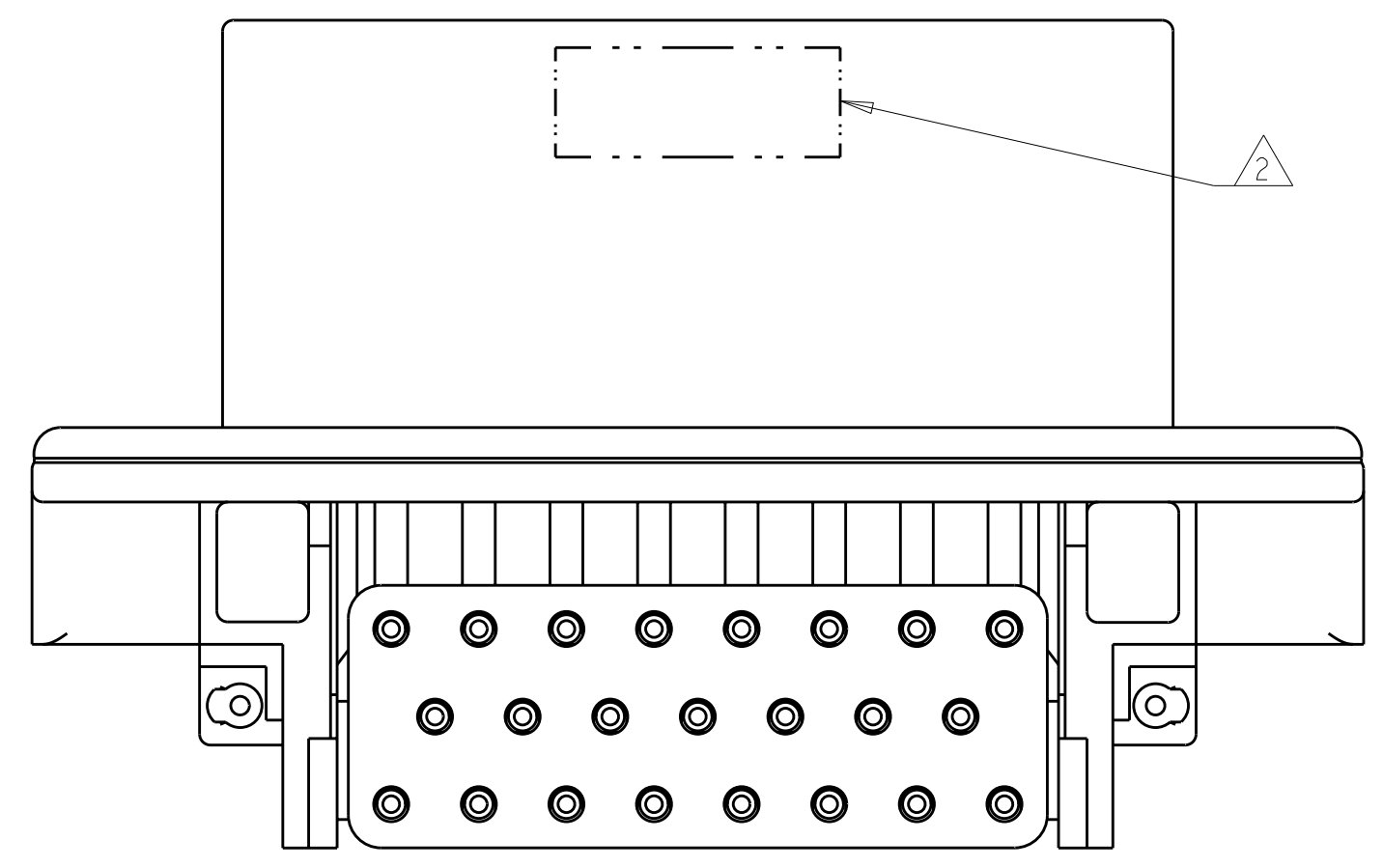


LOC	DIST	REV	DATE	BY	APPD
GE	00	B1	29MAY2012	DD	DS
		REVISIONS			
		DESCRIPTION	DATE	BY	APPD
		REVISED PER ECO-12-009257			



- 1 ACCEPTS #4 SELF TAPPING THREAD FORMING SCREW OR METRIC EQUIVALENT TO BE DRIVEN AT 0.6±0.2 N-M MAX.
- 2 DATE CODE TO BE BRANDED IN THIS LOCATION PER TE SPEC 102-60. USE 5 DIGIT CODE: FIRST 2 DIGITS = YEAR, SECOND 2 DIGITS = WEEK, LAST DIGIT = DAY
- 3 HOUSING COLORS ARE MECHANICALLY KEYS TO MATE ONLY WITH IDENTICALLY COLORED PLUG ASSEMBLIES.
- 4 MATERIAL: HEADERHOUSING - 4/6 NYLON
PINS - GOLD PLATED BRASS
GASKET - SILICONE
FILTER - PBT
- 5. HEADER MATES WITH PLUG ASSEMBLY 770680 WHICH USES REELED TERMINALS 770520 AND LOOSE PIECE TERMINALS 770854



RECOMMENDED MOUNTING HOLE LAYOUT FOR 5.0 MAX THICK PANEL

SECTION Z-Z
OPTIONAL CONSTRUCTION IF THICKNESS IS GREATER THAN 2.0
SCALE 8:1

SECTION Z-Z
OPTIONAL CONSTRUCTION IF THICKNESS IS GREATER THAN 2.0
SCALE 8:1

DURAGOLD	NATURAL (WHITE)	1-776336-2
DURAGOLD	BLACK	1-776336-1
FINISH	COLOR	PART NUMBER

THIS DRAWING IS A CONTROLLED DOCUMENT.		OWN: R. VESTAL 31DEC2002	TE Connectivity	
DIMENSIONS: mm		CHK: D. CROWE 31DEC2002	NAME: HEADER ASSEMBLY, 23 POSITION HIGH TEMPERATURE RIGHT ANGLE, AMPSEAL	
TOLERANCES UNLESS OTHERWISE SPECIFIED:		APPD: D. CROWE 31DEC2002	SIZE: CAGE CODE DRAWING NO. RESTRICTED TO	
9 PLC ±0.3		PRODUCT SPEC: 108-1329	A100779C=776336	
2 PLC ±0.13		APPLICATION SPEC: 114-16016	SCALE: 3:1 SHEET 1 OF 1 REV: B1	
5 PLC ±0.1		WEIGHT: -		
4 PLC ±0.1		CUSTOMER DRAWING		
ANGLES ±0.1				
MATERIAL: 4				
FINISH: 4				