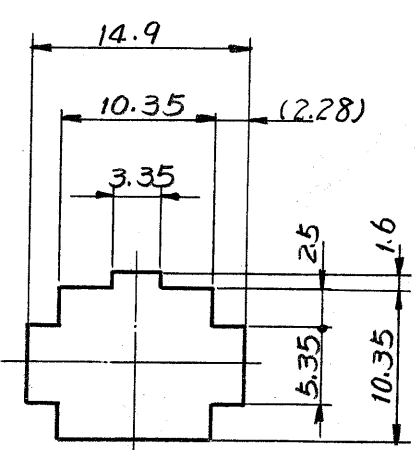
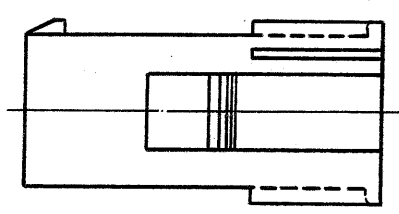
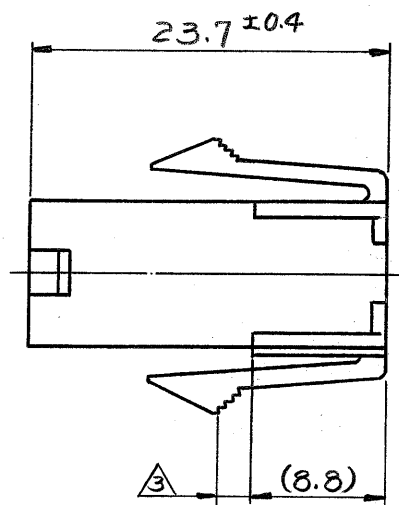
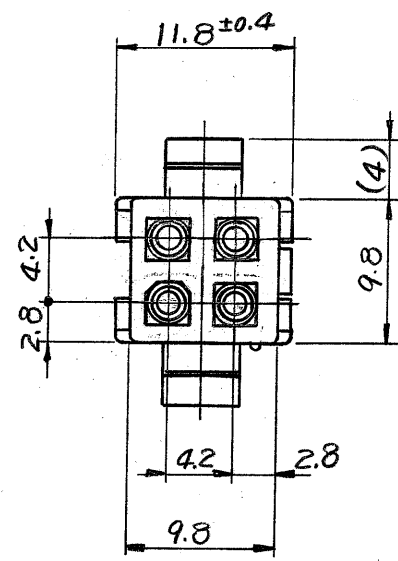
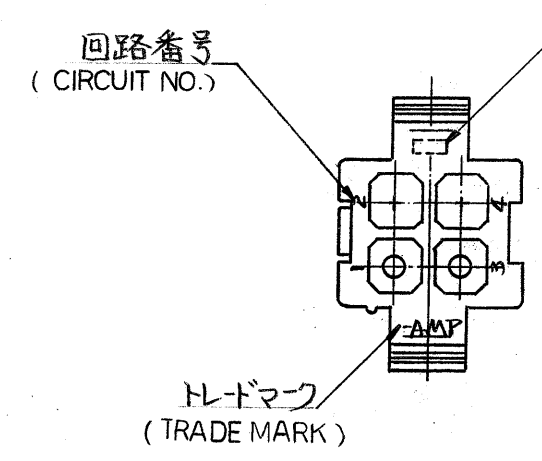


単位: 概 DIMENSIONS IN MM. DO NOT SCALE PRINT



寸法公差は ±0.20  
(TOLERANCE : ±0.2)  
パネル取付穴  
(DIMENSION OF PANEL)



- NOTES:
1. APPLIED CONTACT P/N : 170359, 170360, 170361, 170362.
  2. MATING CONN ; PLUG HOUSING P/N 172338.
  3. PANEL THICKNESS ; 0.8~2.0 mm
  4. PRESS DIRECTION OF PANEL MUST BE SAME AS HOUSING INSERTED DIRECTION.
  5. INSTRUCTION SHEET ; IS-105J
  6. PRODUCT SPEC : 108-5151.
- △ OBSOLETE PARTS: OBSOLETE CIS STREAMLINING PER D.RENAUD/D.SINISI

- 注:
1. 使用端子型番は 170359, 170360, 170361, 170362
  2. 嵌合相手ハウジング型番は 172338
  3. 適用パネル厚 0.8~20 mm.
  4. 取付穴打抜方向とハウジングの挿入方向は同じである.
  5. 取扱説明書 : IS-105J
  6. 適用製品仕様書: 108-5151

<b>OBSOLETE</b>	黄 (YELLOW)	1- 172330 -4
	黒 (BLACK)	1- -9
	青 (BLUE)	1- -6
	緑 (GREEN)	1- -5
	赤 (RED)	1- -2
	自然色 (NATURAL), 色 (COLOR)	172330 -1 型番 (P/N)

材料 (MATERIAL) 6/6 ナイロン (UL94V-2) (NYLON 6/6 UL94V-2)		一般公差 TOLERANCE ±0.3 EXCEPT ±1° AS NOTED		<b>STE</b> TE Connectivity	
仕上 (FINISH) 色: 表参照 HOUSING COLOR : SEE TABLE		DR. R. Yuasa 4/20 21 CHK. A. Tanigawa 4/21 81 DE. APP.		名称 (NAME) MINI-UNIVERSAL MATE-N-LOK CONN. CAP HOUSING 4 Pos. (UL94V-2) 4極ミニユニバーサルメイトンロックコネクタ キャブ7°ハウジング (UL94V-2)	
		SIZE <b>B</b>	LOC <b>J</b>	番号 (NO.) <b>C-172330</b>	
		尺度 (SCALE) 2 : 1		REV. <b>A3</b>	SHEET #

A3	REVISED PER ECO-11-005030	RK	HMR	22MAR11
LTR.	変更 (REVISION RECORD)	DR.	CHK.	DATE