



**MICROCHIP**

---

**MCP3901 ADC Evaluation Board  
for 16-Bit MCUs User's Guide**

---

**Note the following details of the code protection feature on Microchip devices:**

- Microchip products meet the specification contained in their particular Microchip Data Sheet.
- Microchip believes that its family of products is one of the most secure families of its kind on the market today, when used in the intended manner and under normal conditions.
- There are dishonest and possibly illegal methods used to breach the code protection feature. All of these methods, to our knowledge, require using the Microchip products in a manner outside the operating specifications contained in Microchip's Data Sheets. Most likely, the person doing so is engaged in theft of intellectual property.
- Microchip is willing to work with the customer who is concerned about the integrity of their code.
- Neither Microchip nor any other semiconductor manufacturer can guarantee the security of their code. Code protection does not mean that we are guaranteeing the product as "unbreakable."

Code protection is constantly evolving. We at Microchip are committed to continuously improving the code protection features of our products. Attempts to break Microchip's code protection feature may be a violation of the Digital Millennium Copyright Act. If such acts allow unauthorized access to your software or other copyrighted work, you may have a right to sue for relief under that Act.

---

Information contained in this publication regarding device applications and the like is provided only for your convenience and may be superseded by updates. It is your responsibility to ensure that your application meets with your specifications. MICROCHIP MAKES NO REPRESENTATIONS OR WARRANTIES OF ANY KIND WHETHER EXPRESS OR IMPLIED, WRITTEN OR ORAL, STATUTORY OR OTHERWISE, RELATED TO THE INFORMATION, INCLUDING BUT NOT LIMITED TO ITS CONDITION, QUALITY, PERFORMANCE, MERCHANTABILITY OR FITNESS FOR PURPOSE. Microchip disclaims all liability arising from this information and its use. Use of Microchip devices in life support and/or safety applications is entirely at the buyer's risk, and the buyer agrees to defend, indemnify and hold harmless Microchip from any and all damages, claims, suits, or expenses resulting from such use. No licenses are conveyed, implicitly or otherwise, under any Microchip intellectual property rights.

**Trademarks**

The Microchip name and logo, the Microchip logo, dsPIC, KEELOQ, KEELOQ logo, MPLAB, PIC, PICmicro, PICSTART, PIC<sup>32</sup> logo, rfPIC and UNI/O are registered trademarks of Microchip Technology Incorporated in the U.S.A. and other countries.

FilterLab, Hampshire, HI-TECH C, Linear Active Thermistor, MXDEV, MXLAB, SEEVAL and The Embedded Control Solutions Company are registered trademarks of Microchip Technology Incorporated in the U.S.A.

Analog-for-the-Digital Age, Application Maestro, CodeGuard, dsPICDEM, dsPICDEM.net, dsPICworks, dsSPEAK, ECAN, ECONOMONITOR, FanSense, HI-TIDE, In-Circuit Serial Programming, ICSP, Mindi, MiWi, MPASM, MPLAB Certified logo, MPLIB, MPLINK, mTouch, Omniscient Code Generation, PICC, PICC-18, PICDEM, PICDEM.net, PICKit, PICtail, REAL ICE, rLAB, Select Mode, Total Endurance, TSHARC, UniWinDriver, WiperLock and ZENA are trademarks of Microchip Technology Incorporated in the U.S.A. and other countries.

SQTP is a service mark of Microchip Technology Incorporated in the U.S.A.

All other trademarks mentioned herein are property of their respective companies.

© 2010, Microchip Technology Incorporated, Printed in the U.S.A., All Rights Reserved.

 Printed on recycled paper.

ISBN: 978-1-60932-571-8

*Microchip received ISO/TS-16949:2002 certification for its worldwide headquarters, design and wafer fabrication facilities in Chandler and Tempe, Arizona; Gresham, Oregon and design centers in California and India. The Company's quality system processes and procedures are for its PIC<sup>®</sup> MCUs and dsPIC<sup>®</sup> DSCs, KEELOQ<sup>®</sup> code hopping devices, Serial EEPROMs, microperipherals, nonvolatile memory and analog products. In addition, Microchip's quality system for the design and manufacture of development systems is ISO 9001:2000 certified.*

**QUALITY MANAGEMENT SYSTEM  
CERTIFIED BY DNV  
== ISO/TS 16949:2002 ==**



# MCP3901 ADC EVALUATION BOARD FOR 16-BIT MCUs USER'S GUIDE

---

---

## Table of Contents

---

---

<b>Preface</b> .....	<b>5</b>
Introduction.....	5
Document Layout .....	5
Conventions Used in this Guide .....	6
Recommended Reading.....	7
The Microchip Web Site .....	7
Customer Support .....	7
Document Revision History .....	7
<b>Chapter 1. Hardware Description</b>	
1.1 Overview .....	9
1.2 PIM Module/MCP3901 Connection and Peripheral Usage Overview .....	11
1.3 MCP3901 Delta-Sigma Sampling/MCLK Options .....	12
1.4 Analog Input Structure .....	13
1.5 Universal Serial Bus (USB) .....	13
<b>Chapter 2. Firmware</b>	
2.1 DSPIC33 Firmware Description .....	15
2.2 Data Acquisition .....	16
2.3 UART Communication Protocol .....	18
<b>Chapter 3. MCP3901 PC Software Tool</b>	
3.1 Software Overview .....	21
3.2 Setting the Configuration of the ADC .....	22
3.3 Connectivity and Recording Length .....	22
3.4 Scope Plot Window - Time Domain Analysis .....	22
3.5 Histogram Window – Noise Analysis .....	22
3.6 FFT Window – Frequency Domain Analysis .....	23

# MCP3901 ADC Evaluation Board for 16-Bit MCUs User's Guide

---

---

## Appendix A. Schematics and Layouts

A.1 Introduction .....	25
A.2 Schematic – Analog .....	26
A.3 Schematic – LCD and UART .....	27
A.4 Schematic – USB and Memory .....	28
A.5 Schematic – Microcontroller (MCU) .....	29
A.6 Schematic – PIM Module .....	30
A.7 Schematic – Power .....	31
A.8 Board – Top Trace and Top Silk .....	32
A.9 Board – Bottom Trace and Bottom Silk .....	32
A.10 Board – Layer #2 VDD .....	33
A.11 Board – Layer #3 GND .....	33
A.12 Board – Top Silk and Pads .....	34
A.13 Board – Bottom Top Silk and Pads .....	34

## Appendix B. Bill Of Materials (BOM)

Worldwide Sales and Service .....	38
-----------------------------------	----



# MCP3901 ADC EVALUATION BOARD FOR 16-BIT MCUs USER'S GUIDE

## Preface

### NOTICE TO CUSTOMERS

All documentation becomes dated, and this manual is no exception. Microchip tools and documentation are constantly evolving to meet customer needs, so some actual dialogs and/or tool descriptions may differ from those in this document. Please refer to our web site ([www.microchip.com](http://www.microchip.com)) to obtain the latest documentation available.

Documents are identified with a “DS” number. This number is located on the bottom of each page, in front of the page number. The numbering convention for the DS number is “DSXXXXA”, where “XXXX” is the document number and “A” is the revision level of the document.

For the most up-to-date information on development tools, see the MPLAB® IDE on-line help. Select the Help menu, and then Topics to open a list of available on-line help files.

## INTRODUCTION

This chapter contains general information that will be useful to know before using the MCP3901 ADC Evaluation Board for 16-Bit MCUs. Items discussed in this chapter include:

- Document Layout
- Conventions Used in this Guide
- Recommended Reading
- The Microchip Web Site
- Customer Support
- Document Revision History

## DOCUMENT LAYOUT

This document describes how to use the MCP3901 ADC Evaluation Board for 16-Bit MCUs as a development tool to emulate and debug firmware on a target board. The manual layout is as follows:

- **Chapter 1. “Hardware Description”**– Provides important information about the MCP3901 ADC Evaluation Board for 16-Bit MCUs hardware.
- **Chapter 2. “Firmware”**– Describes the MCP3901 ADC Evaluation Board for 16-Bit MCUs firmware.
- **Chapter 3. “MCP3901 PC Software Tool”** – Provides detailed information about board’s PC software tool.
- **Appendix A. “Schematics and Layouts”**– Shows the schematic and board layouts for the MCP3901 ADC Evaluation Board for 16-Bit MCUs.
- **Appendix B. “Bill Of Materials (BOM)”** – Lists the parts used to build the MCP3901 ADC Evaluation Board for 16-Bit MCUs.

# MCP3901 ADC Evaluation Board for 16-Bit MCUs User's Guide

## CONVENTIONS USED IN THIS GUIDE

This manual uses the following documentation conventions:

### DOCUMENTATION CONVENTIONS

Description	Represents	Examples
<b>Arial font:</b>		
Italic characters	Referenced books	<i>MPLAB<sup>®</sup> IDE User's Guide</i>
	Emphasized text	...is the <i>only</i> compiler...
Initial caps	A window	the Output window
	A dialog	the Settings dialog
	A menu selection	select Enable Programmer
Quotes	A field name in a window or dialog	"Save project before build"
Underlined, italic text with right angle bracket	A menu path	<u><i>File&gt;Save</i></u>
Bold characters	A dialog button	Click <b>OK</b>
	A tab	Click the <b>Power</b> tab
N'Rnnnn	A number in verilog format, where N is the total number of digits, R is the radix and n is a digit.	4'b0010, 2'hF1
Text in angle brackets < >	A key on the keyboard	Press <Enter>, <F1>
<b>Courier New font:</b>		
Plain Courier New	Sample source code	#define START
	Filenames	autoexec.bat
	File paths	c:\mcc18\h
	Keywords	_asm, _endasm, static
	Command-line options	-Opa+, -Opa-
	Bit values	0, 1
	Constants	0xFF, 'A'
Italic Courier New	A variable argument	<i>file.o</i> , where <i>file</i> can be any valid filename
Square brackets [ ]	Optional arguments	mcc18 [options] <i>file</i> [options]
Curly brackets and pipe character: {   }	Choice of mutually exclusive arguments; an OR selection	errorlevel {0 1}
Ellipses...	Replaces repeated text	var_name [, var_name...]
	Represents code supplied by user	void main (void) { ... }

## RECOMMENDED READING

This user's guide describes how to use MCP3901 ADC Evaluation Board for 16-Bit MCUs. Other useful documents are listed below. The following Microchip document is available and recommended as supplemental reference resources:

**MCP3901 Data Sheet - "Two Channel Delta Sigma A/D Converter", DS22192**

## THE MICROCHIP WEB SITE

Microchip provides online support via our web site at [www.microchip.com](http://www.microchip.com). This web site is used as a means to make files and information easily available to customers. Accessible by using your favorite Internet browser, the web site contains the following information:

- **Product Support** – Data sheets and errata, application notes and sample programs, design resources, user's guides and hardware support documents, latest software releases and archived software
- **General Technical Support** – Frequently Asked Questions (FAQs), technical support requests, online discussion groups, Microchip consultant program member listing
- **Business of Microchip** – Product selector and ordering guides, latest Microchip press releases, listing of seminars and events, listings of Microchip sales offices, distributors and factory representatives

## CUSTOMER SUPPORT

Users of Microchip products can receive assistance through several channels:

- Distributor or Representative
- Local Sales Office
- Field Application Engineer (FAE)
- Technical Support

Customers should contact their distributor, representative or field application engineer (FAE) for support. Local sales offices are also available to help customers. A listing of sales offices and locations is included in the back of this document.

Technical support is available through the web site at: <http://support.microchip.com>.

## DOCUMENT REVISION HISTORY

### Revision A (July 2009)

- Initial Release of this Document.

### Revision B (October 2010)

- Minor grammatical changes throughout document. No technical information has changed.

# MCP3901 ADC Evaluation Board for 16-Bit MCUs User's Guide

---

---

NOTES:





# MCP3901 ADC EVALUATION BOARD FOR 16-BIT MCUs USER'S GUIDE

---

---

## Chapter 1. Hardware Description

---

---

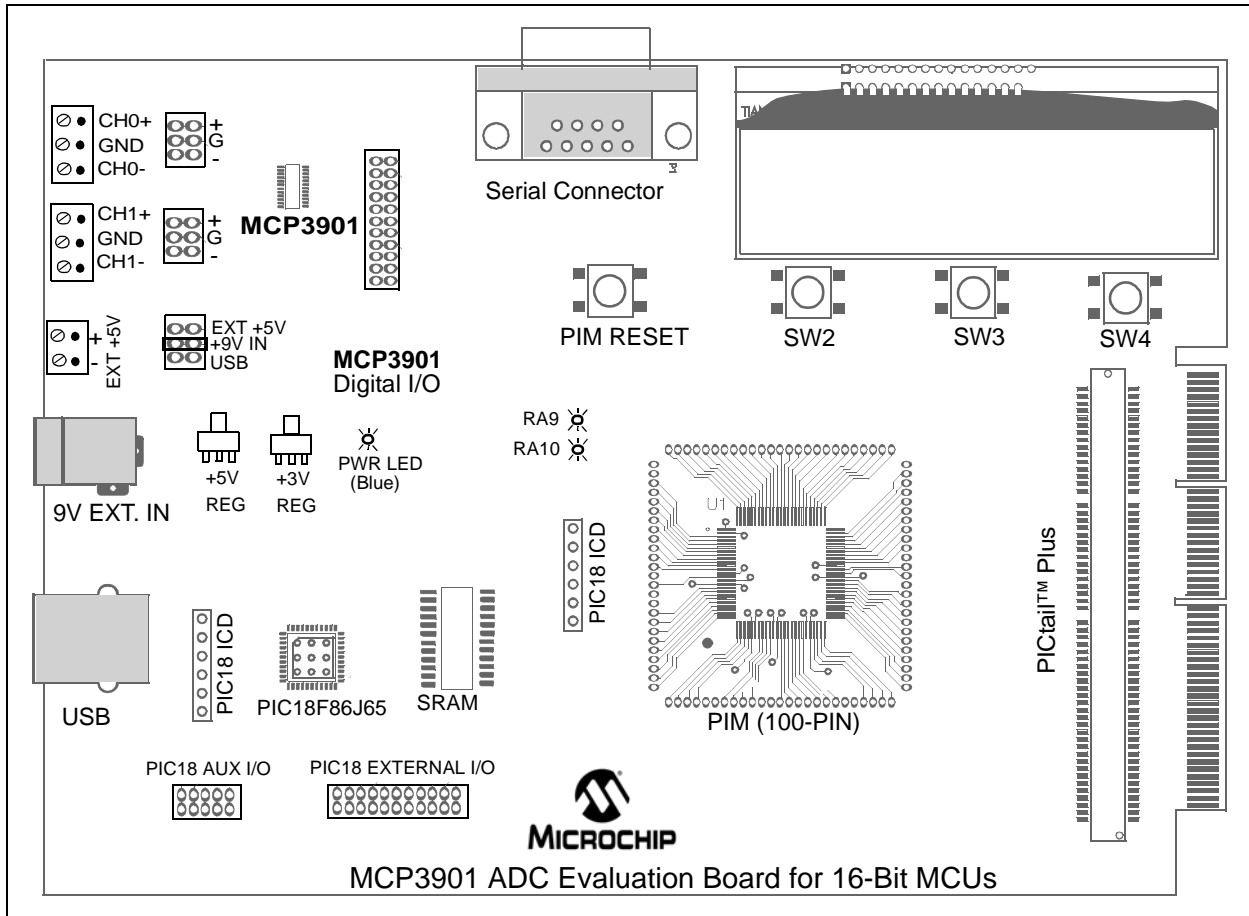
### 1.1 OVERVIEW

The MCP3901 ADC Evaluation Board for 16-Bit MCUs system provides the ability to evaluate the performance of the MCP3901 dual channel ADC. It also provides a development platform for 16-bit PIC<sup>®</sup> MCU-based applications, using existing 100-pin Plug-in Module (PIM) systems compatible with the Explorer 16 and other high pin count PIC MCU demo boards. The system comes with programmed dsPIC33FJ256GP710 PIM modules that communicate with the LabVIEW<sup>™</sup> software GUI for data exchange and ADC setup.

#### 1.1.1 Feature Highlights

- Dual ADC MCP3901 output display using serial communication to PC software interface
- Simultaneous 4 ksps at 90 dB SINAD and top speed of 55 ksps performance on dual MCP3901 channels
- System and ADC performance analysis through graphical PC tools showing noise histogram, frequency domain (FFT), time domain scope plot, and statistical numerical analysis
- Robust hardware design with analog grounding and analog/digital separation, allowing low noise evaluation of MCP3901 devices. Separate power supplies and power planes – 4 layer board
- PICtail<sup>™</sup> Plus connectors for Explorer 16 daughter board compatibility

# MCP3901 ADC Evaluation Board for 16-Bit MCUs User's Guide

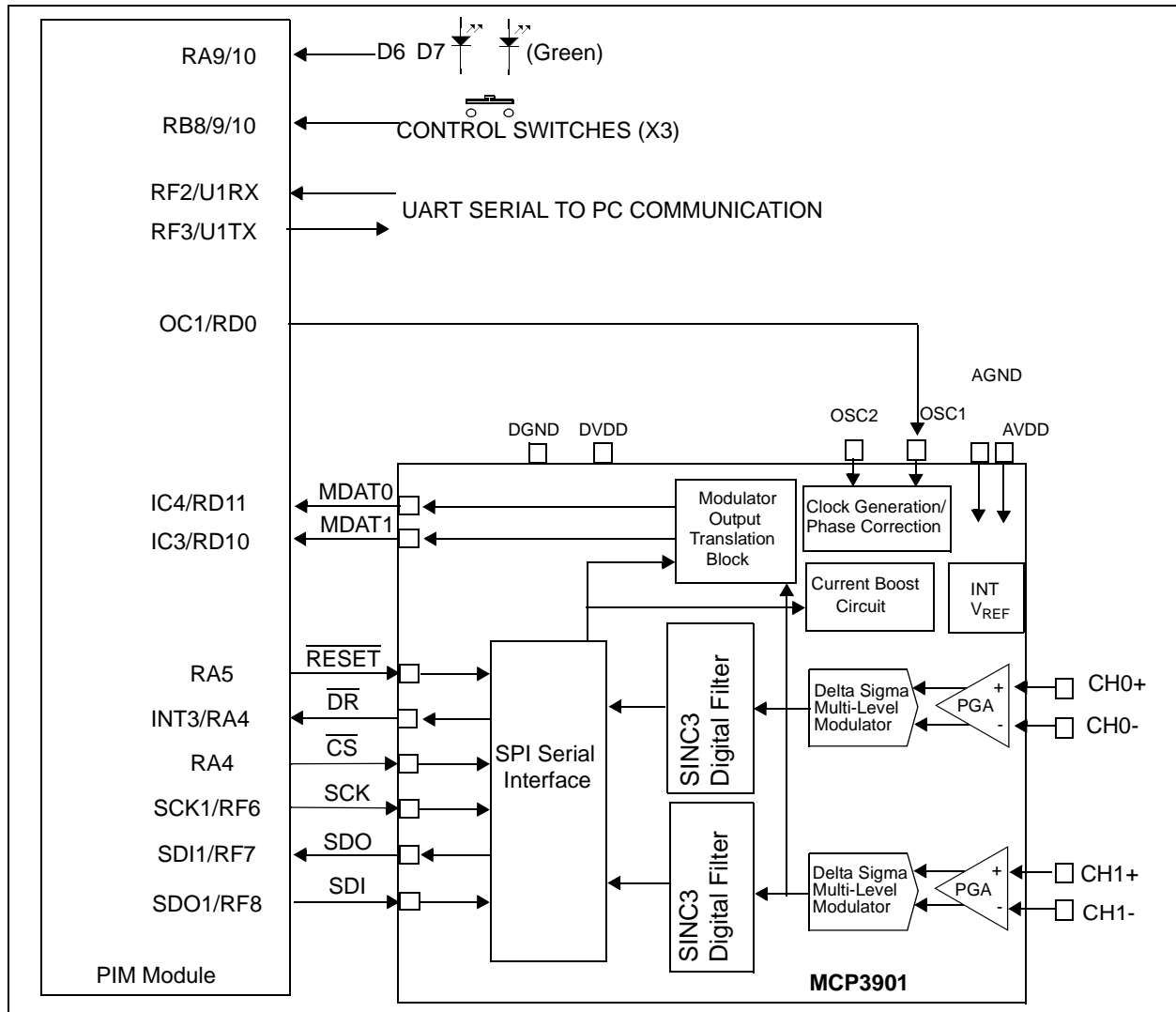


**FIGURE 1-1:** MCP3901 ADC Evaluation Board for 16-Bit MCUs.

## 1.2 PIM MODULE/MCP3901 CONNECTION AND PERIPHERAL USAGE OVERVIEW

The MCP3901 ADC Evaluation Board for 16-Bit MCUs contains a 100-pin PIM socket compatible with Microchip's PIM modules. The system comes with 2 PIM modules: the PIC24FJ128GA010 and dsPIC33FJ256GA710.

A complete description of the firmware programmed with these two modules is available in **Chapter 1. "Hardware Description"**.



**FIGURE 1-2:** Digital Connection Overview PIM/MCP3901 Connections.

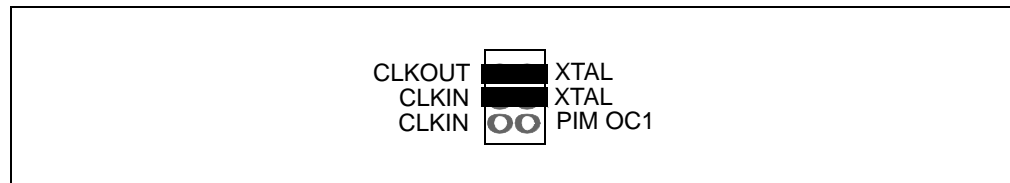
Ports A, B, and D are used for signals such as push buttons, output LEDs,  $\overline{CS}$  and  $\overline{MCLR}$  (for MCP3901 data mode setting). Output Capture 1 is used for MCP3901's clock generation. Serial communication is achieved through the MSSP module 1.

## 1.3 MCP3901 DELTA-SIGMA SAMPLING/MCLK OPTIONS

The MCP3901 device is an ADC with a second order modulator and a third order sync filter. This Delta-Sigma A/D converter has an adjustable oversampling ratio. The CLKIN pin of the MCP3901 is the oversampling clock (MCLK) input. The MCP3901 ADC Evaluation Board for 16-Bit MCUs offers two different options for the MCP3901 master clock (MCLK).

### 1.3.1 Using the Crystal X2

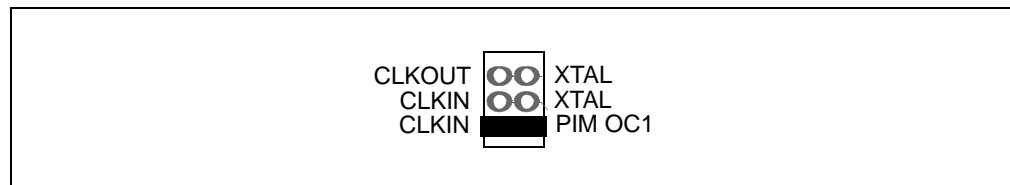
The MCP3901 ADC Evaluation Board for 16-Bit MCUs is populated with a 3.58 MHz crystal, which is used as a clock source by placing jumpers in the following position on the MCP3901 Digital I/O header block:



**FIGURE 1-3:** ADC Clock Selection Jumpers – External Crystal.

### 1.3.2 Driving the Clock with the PIM Module

The PIC MCU can be used to generate the CLKIN (MCLK) signal for the MCP3901, setting the ADC sample rate through the use of the output compare module OC1. To use this, make the following jumper change to the MCP3901 Digital I/O header block:



**FIGURE 1-4:** ADC Clock Selection Jumpers – Clock from MCU.

The frequency of the OC1 output is based on the PR1 bits settings in the firmware (for both PIC24 and dsPIC33 PIM modules supplied with this system). The signal frequency from OC1 can be changed by the user from the PS software by changing the value in the sampling rate control box. A low number will generate a high frequency signal. The value of the sampling rate, which is directly proportional with the clock frequency from OC1, is indicated in the sampling speed indicator box in the PC software (see Figure 3-1).

## 1.4 ANALOG INPUT STRUCTURE

Two differential input paths allow external signal sources to be easily connected to the MCP3901 input. Edge connectors JP1 and JP2 are 3-pin connectors that act both as crew type and clip on post connectors.

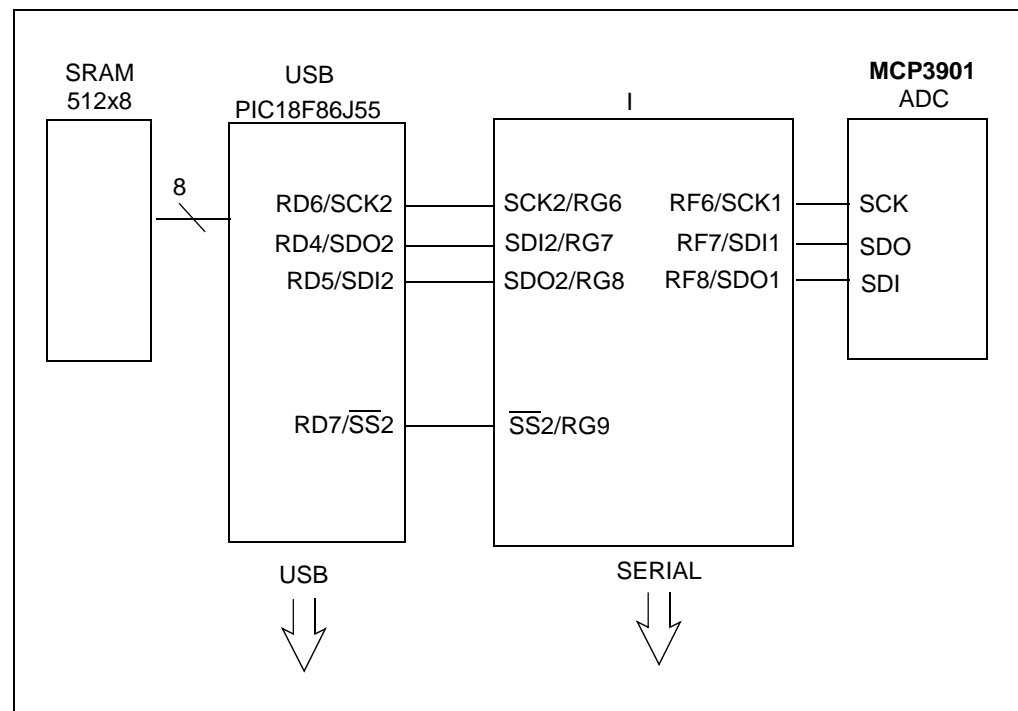
**Note:** To use an edge connector as a post connector, pull up the blue plastic top to access posts.

JP1 and JP2 can be used to force either channel from a differential to single-ended configuration. R3 and R4 (on CH0), and R1 and R2 (on CH2) act as locations for burden resistor connectors for any current transformer inputs.

## 1.5 UNIVERSAL SERIAL BUS (USB)

The MCP3901 ADC Evaluation Board for 16-Bit MCUs also contains a USB connection for higher speed sampling and data collection. The circuit includes a 512x8 SRAM for data collection. Figure 1-5 summarizes the connections between the ADC, the two microcontrollers and memory.

**Note:** For the MCP3901 ADC Evaluation Board for 16-Bit MCUs release, no USB firmware is supplied. The PIC18F86J55 is blank and only included for development purposes.



**FIGURE 1-5:** USB Block Diagram.

# MCP3901 ADC Evaluation Board for 16-Bit MCUs User's Guide

---

---

NOTES:



# MCP3901 ADC EVALUATION BOARD FOR 16-BIT MCUs USER'S GUIDE

---

---

## Chapter 2. Firmware

---

---

### 2.1 DSPIC33 FIRMWARE DESCRIPTION

#### 2.1.1 Reset and Initialization

After reset, the global variables `ConfigHValue`, `ConfigLValue`, `GainValue`, and `StatusComValue` are written to `0x00`. These variables will be written with values received from the PC, to set up the MCP3901 as required. Next, the `Initialization()` function is called to set up the dsPIC33. First, interrupt nesting is configured in order to disable the user interrupts by putting the MCU priority at 7 (maximum). External interrupt 3 is enabled on the positive edge. The INT3 interrupt is enabled but the priority is set to 6. Since it is lower than 7, it will not be active until the MCU priority is decreased to less than 6. The MCU uses the FRC (7.37 MHz) with PLL. The clock on the MCU will be 80 MHz, the maximum frequency for dsPIC33, at which the computing power is 40 MIPS.

Timer2 is placed on the Output Compare 1 pin (OC1), and is used to generate the master clock (MCLK) for the MCP3901. In addition, some initial values are set up for the MCP3901 clock frequency. Timer5 is configured (but not active), and the interrupt is disabled. The user can enable it for different applications. The SPI peripheral is configured, but the interrupt is disabled. The SPI interrupt will be enabled in code to establish the communication between MCU and MCP3901. The UART is used to send and receive data from the PC at a speed of 115200 baud. Timer8 and Timer9 are configured to create a 32-bit timer that runs at maximum speed. It is used to measure the time needed to fill the data buffer, so it measures the sampling speed of the MCP3901.

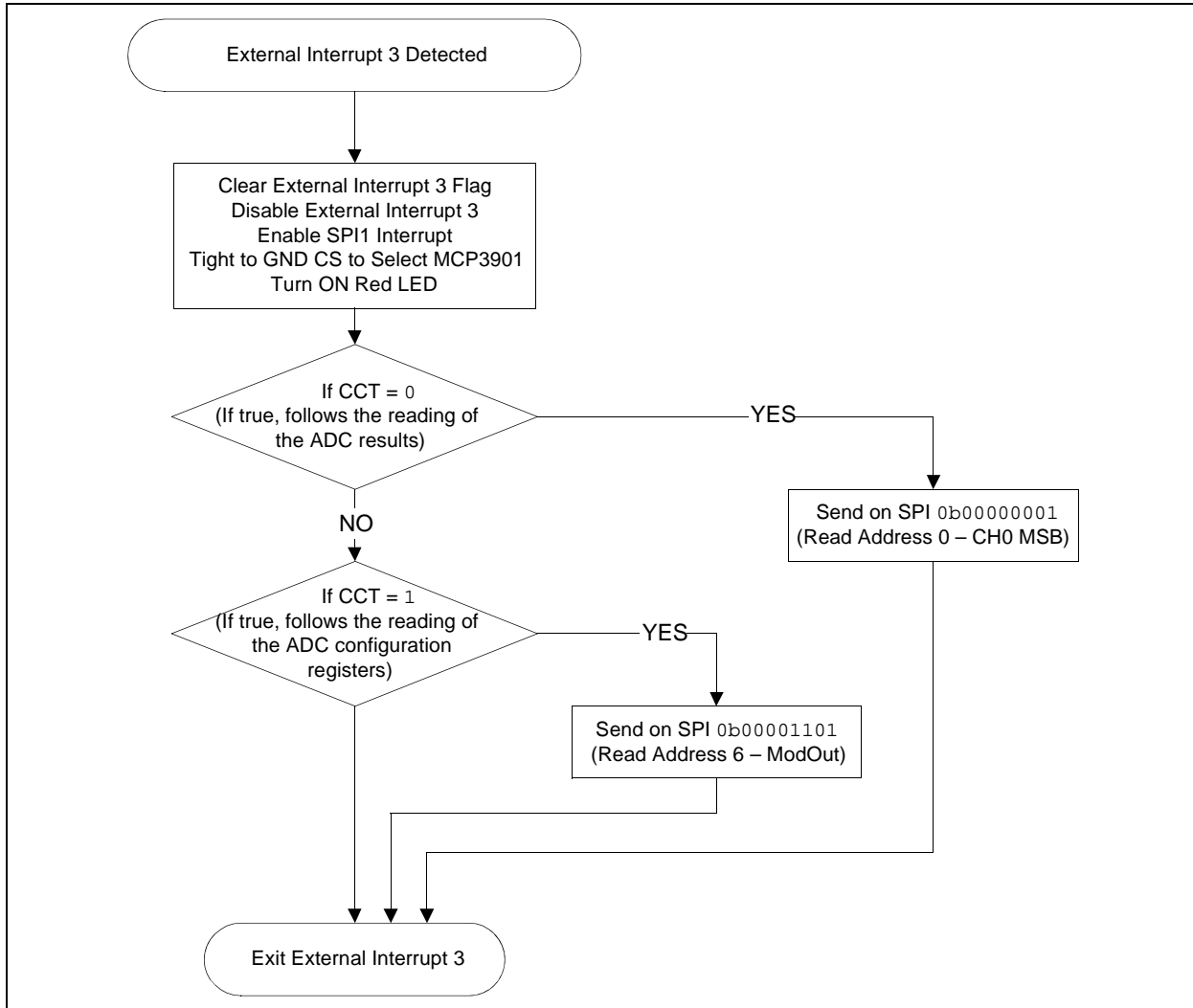
After the execution of the `Initialization()` function, the MCP3901 is configured with values given by a set of functions especially developed for the MCP3901 configuration. In this case, this step is not necessary because the MCP3901 will update its configuration using data from the PC GUI. These functions are helpful for users to develop applications that do not involve a PC to configure the MCP3901.

For example, `AddressLoop(NONE)` is used to select the loop on specific registers groups and types. `DRHIZ(ON)` will allow the data ready pulse to be present at the output of the MCP3901 even if there is no pull-up resistor. `SetGain(1,1)` configures the gain of both channels at 1. A list of all configuration functions are found in the firmware file, `main.c`, starting at line 345.

It is important to have interrupts disabled during this configuration. Only after the MCP3901 is configured using the functions described, can the interrupts be enabled. In this case, it is done by decreasing the CPU priority to 3.

## 2.2 DATA ACQUISITION

The end of a conversion is indicated with a short high pulse on the Data Ready (DR) pin of the ADC. The DR pin is connected to the External Interrupt 3 pin and is used for detecting the end of a conversion on MCP3901. In the INT3 interrupt, the SPI interrupt is activated and the first transmission on the SPI is initiated. The SPI communication that follows can be a read of the ADC conversion register or the Configuration register.  $CCT = 0$  is a read of the ADC Conversion register, and  $CCT = 1$  is a read of the MCP3901 Configuration register. It is possible to read the ADC conversion registers and MCP3901 configuration registers at the same time, but due to transfer volume and its impact on speed, this will prevent achieving a high sampling rate. SPI communication is always in 8-bit mode.



**FIGURE 2-1:** INT3 Flowchart.

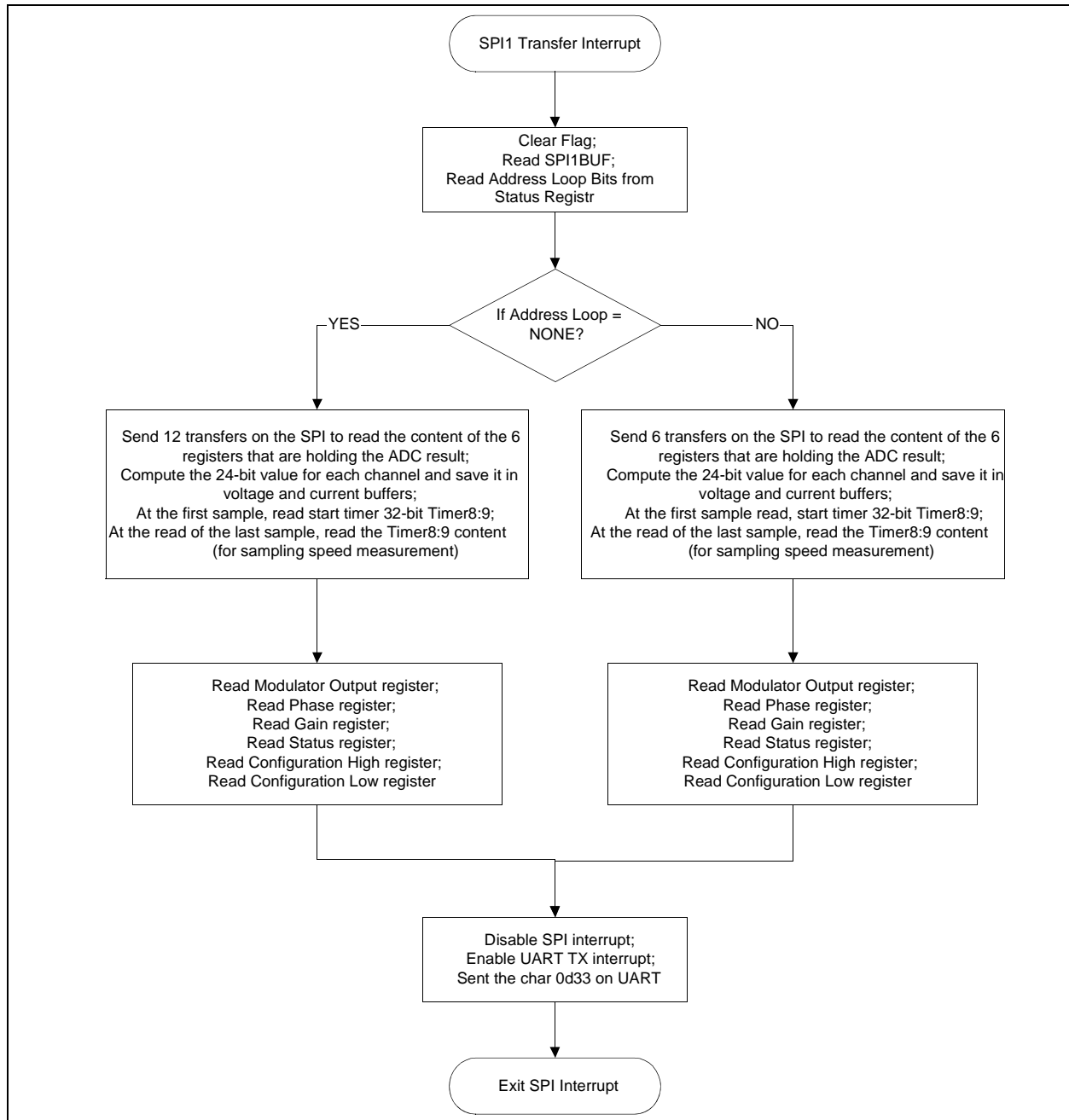
An SPI interrupt takes place after each successful data transfer between master and slave on the SPI. As with any interrupt, the first thing to do is to clear the interrupt flag; otherwise, a new interrupt will occur without reason. The CCSPI global value is the counter that indicates if the SPI transfer that is occurring is the first, the second, etc. After saving the samples into the MCU, SPI communication is disabled by setting CS high. If CCT was '0', then the data that comes from the MCP3901 is ADC conversion data and will be converted from 3 bytes into an unsigned long number. This 24-bit value will be saved into the current or voltage buffers.



When the first sample is written in the buffer, the 32-bit timer created using Timer8 and 9, begins counting from 0. When the last sample is written into the buffer, the 32-bit timer is read. The value indicated will be used to compute the sampling speed.

If the CCT is 1, then the data read from the MCP3901 will be the configuration data. This will be saved in MCU in other global variables, used later to send this info to the PC GUI.

After the SPI communication completes, the SPI interrupt will be disabled and the UART TX interrupt will be enabled. The first character sent on UART is char 33; this is the header of the UART communication protocol that is adopted here.



**FIGURE 2-2:** SPI Routine Flowchart.

## 2.3 UART COMMUNICATION PROTOCOL

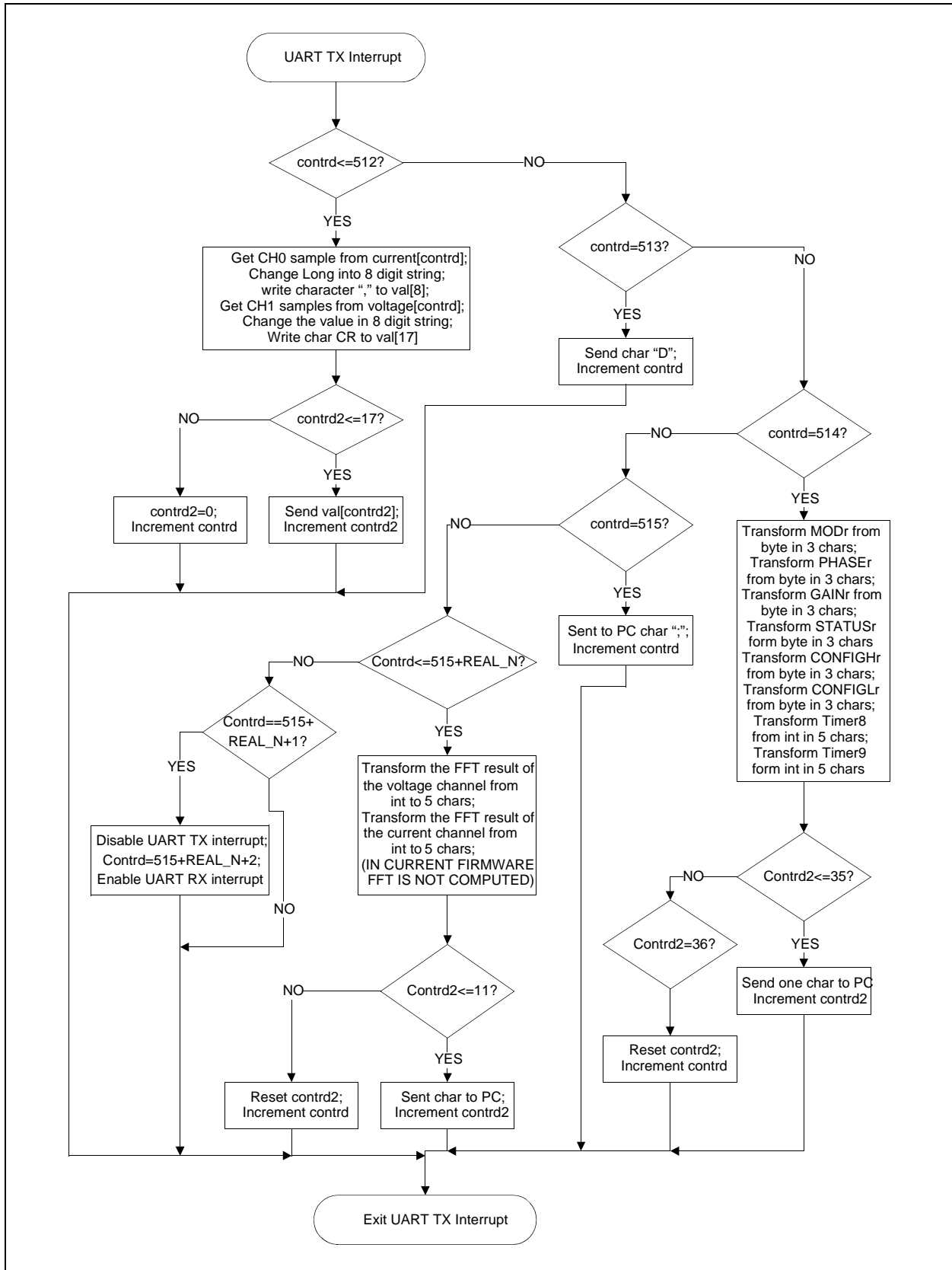
The MCU uses the UART to send and receive data to the PC. The TX and RX interrupts are not used simultaneously in this firmware example, but it is possible to do so, if the user requires it.

As soon as the buffer is filled with data from the ADC, the SPI interrupt is disabled, and the TX interrupt is enabled. There are more types of data to be sent from the MCU to the PC. The first to be sent is the data stored in the buffers. Before being sent, each number is translated to ASCII characters that represent the number stored in the buffer. The start of the buffer data transmissions is acknowledged by transmitting the character: "!".

The numbers in the current buffer are comma delimited, and each row ends with the characters "0x0D". After 512 rows, the buffer data transmission is complete, which is signaled by sending out the character "D".

Next, the data regarding the MCP3901 configuration and sampling speed is sent out. After a total of 35 characters are sent, the MCP3901 configuration data is fully transmitted, which is signaled by sending the character ";" to the PC. This character also signals that the result of an FFT computation will be sent out next.

In the last UART TX interrupt, the TX interrupt is disabled and the RX interrupt is enabled. Through the RX interrupt, the MCU will receive the configuration for the MCP3901 desired by the user. The protocol is simple. The first character received must be "D" from configuration data. Following this character will be the values of 6 registers: PHASE, GAIN, CONFIGH, CONFIGL, STATUS, PPREG8. The first 5 registers can hold values from 0 to 255, so they are made up of a maximum 3 characters. If the equivalent number is less than 100, the first character will be the space character (" "), not zero. The PREG8 register is a 16-bit register inside the MCU that controls the frequency of the clock signal from OC1, which controls the sampling speed of the MCP3901. Since it is a 16-bit register, the number of characters that create the correct value is 5.



**FIGURE 2-3:** Serial Transmission Flowchart.

# MCP3901 ADC Evaluation Board for 16-Bit MCUs User's Guide

---

---

NOTES:

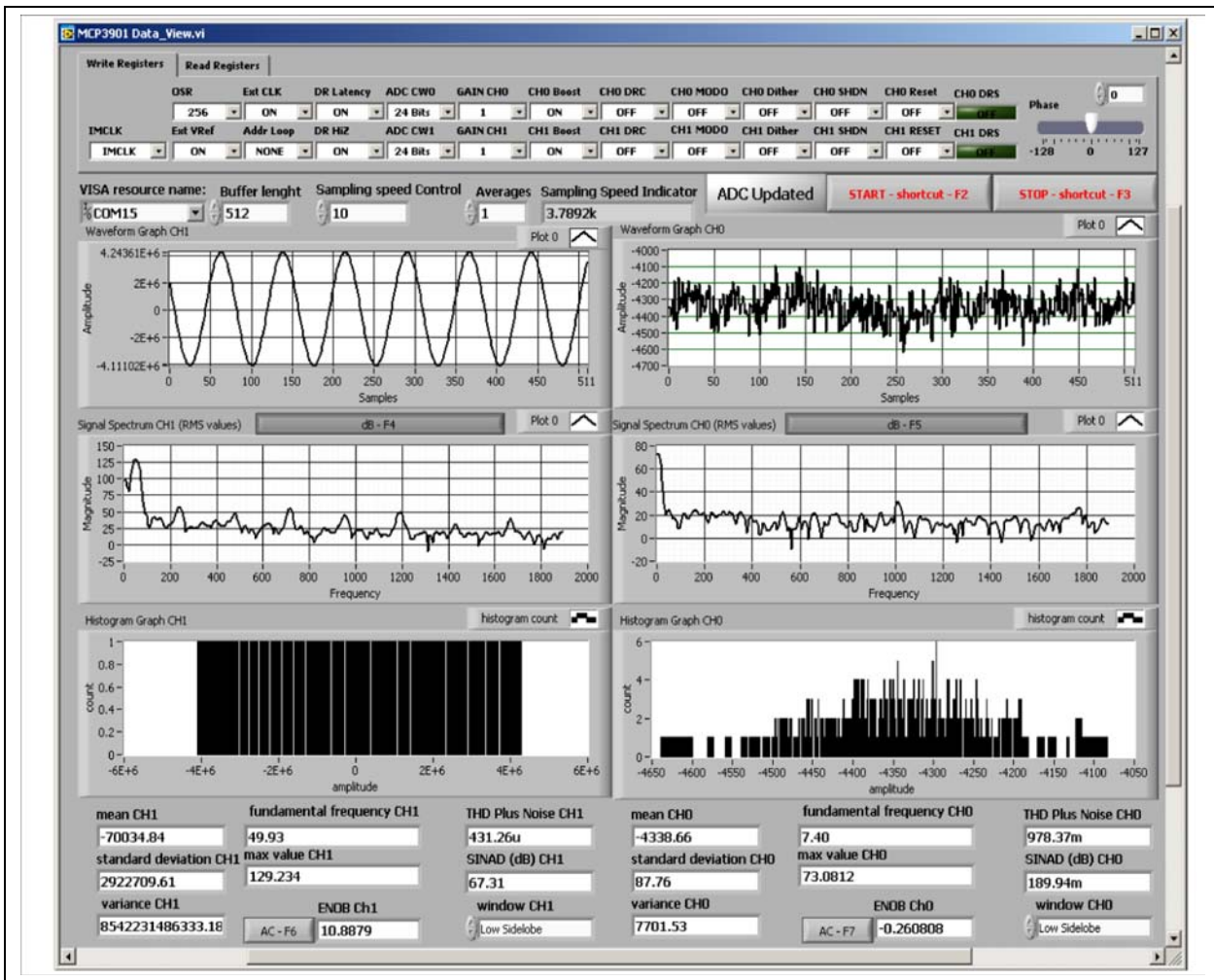
**Chapter 3. MCP3901 PC Software Tool**

**3.1 SOFTWARE OVERVIEW**

The MCP3901 ADC Evaluation Board for 16-Bit MCUs includes a PC Graphical User Interface (GUI) that performs:

- ADC configuration
- Data analysis for easier system debugging
- Device evaluation

Figure 3-1 shows a sample of the software's GUI.



**FIGURE 3-1:** MCP3901 Data View Interface.

## 3.2 SETTING THE CONFIGURATION OF THE ADC

The MCP3901 Data View sets up the configuration registers of the MCP3901 by putting the desired value on the “Write Registers” tab. Usually, it takes a few seconds to update the MCP3901 configuration. To learn the configuration of the MCP3901 without changing it, click on the “Read Registers” tab and the same image as in “Write Registers” will display. The difference is that the controls will be indicators, and the user cannot change the values, but can only read the setup of the MCP3901.

## 3.3 CONNECTIVITY AND RECORDING LENGTH

The PC is connected to the MCP3901 ADC Evaluation Board for 16-Bit MCUs through the RS232 cable. It is important to have a COM port on the PC. It is also possible to use a USB to RS232 adaptor cable, but the user will need to note the number of the virtual COM port. To do this, right click on *My computer > Manage > Device Manager > Port (COM and LPT)*, and read the number in parenthesis after the device name. The COM port number must be selected in the “VISA Resource Name” field.

The MCU sends a large package of data to the PC. If the user only needs to see a small part of the buffer, define the desired buffer length in the “Buffer Length” field. The maximum length is 512 samples.

The average control can be used to view the impact of averaging over the ADC accuracy. The number of points in the waveform graph will be less than the number written in the “Buffer Length” control by a ratio equal with the value of the average. A value equal to zero will cause an error. A value of ‘1’ means that no averaging is done.

When the program is opened for the first time, the value from the controls will have some default values. The user must set up the communication port before starting the acquisition by pressing the **START** button. To stop the acquisition, press the **STOP** button. Close the MCP3901 Data View application by clicking the “X” in the upper right corner of the window.

## 3.4 SCOPE PLOT WINDOW - TIME DOMAIN ANALYSIS

The recorded samples from a buffer are indicated on the “Waveform Graphs” screens. The size of the X axis is given by the number written in the “Buffer Length” field. On the Y axis, the LSBs are indicated. To scale the time axis, it is necessary to modify either the buffer length (the number of points indicated in the waveform graph), or to change the sampling rate of the ADC.

The sampling rate of the ADC can be changed from the “Sampling Speed Control” box. Writing a small value will achieve a high sampling rate. The correct value of the sampling rate is indicated in the “Sampling Speed Indicator”. The highest sampling speed that can be obtained is 55 kbps by setting: OSR = 32, Addr Loop = ALL and Sampling Speed Control = 5.

## 3.5 HISTOGRAM WINDOW – NOISE ANALYSIS

For the evaluation of the Effective Number Of Bits (ENOB), the GUI will compute a few statistical parameters: the mean value, standard deviation, and variance for each channel. These parameters display at the bottom of the GUI, under the Histogram Graph screens. The formula used for the ENOB in the case of a DC signal is seen in Equation 3-1, if the application indicates the acquired data on 16 bits.

**EQUATION 3-1:**

$$ENOB = 16 - \log_2(\sigma)$$

Use Equation 3-2 if the data is represented on 24 bits.

**EQUATION 3-2:**

$$ENOB = 24 - \log_2(\sigma)$$

ENOB can also be computed when an AC signal is applied at the input. The formula to compute ENOB in an AC case is shown in Equation 3-3.

**EQUATION 3-3:**

$$ENOB = \frac{SINAD - 1.76}{6.02}$$

The distribution of noise from the acquired signal displays on the Histogram Graph screens. These graphs indicate how many times a code was present inside a buffer.

## 3.6 FFT WINDOW – FREQUENCY DOMAIN ANALYSIS

The spectrum of the acquired signal is visible in the Signal Spectrum screen. Above these graphics there is a button that can be used to set the Y axis to be linear or logarithmic. A logarithmic scale on the Y axis is useful to see the level of low harmonics, or the noise floor. The length of the FFT is given by the buffer length and the sampling speed. The X axis is scaled directly in Hz units.

Another feature of the software is the window selection for the FFT computation. This is done from the “Window” fields, in the lower region of the GUI, right above the Current FFT screens. The user can select from a large number of windows.

Since the GUI performs the spectral analysis of the acquired signal, it is possible to compute AC performance parameters of the ADC: “THD” and “SINAD” are shown on the indicators, under the Histogram Graph screens.

# MCP3901 ADC Evaluation Board for 16-Bit MCUs User's Guide

---

---

NOTES:





# MCP3901 ADC EVALUATION BOARD FOR 16-BIT MCUs USER'S GUIDE

---

---

## Appendix A. Schematics and Layouts

---

---

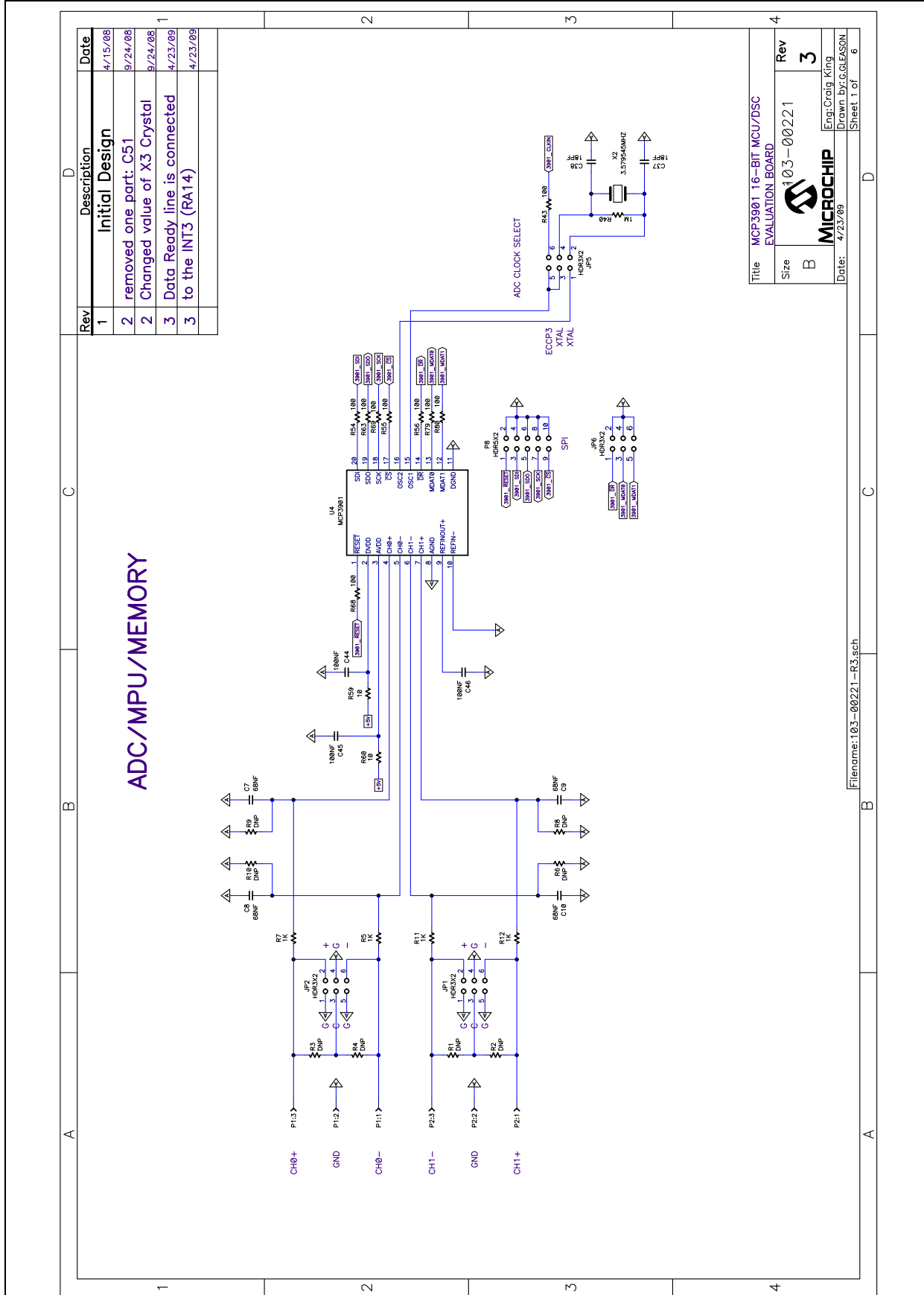
### A.1 INTRODUCTION

This appendix contains the following schematics and layouts of the MCP3901 ADC Evaluation Board for 16-Bit MCUs.

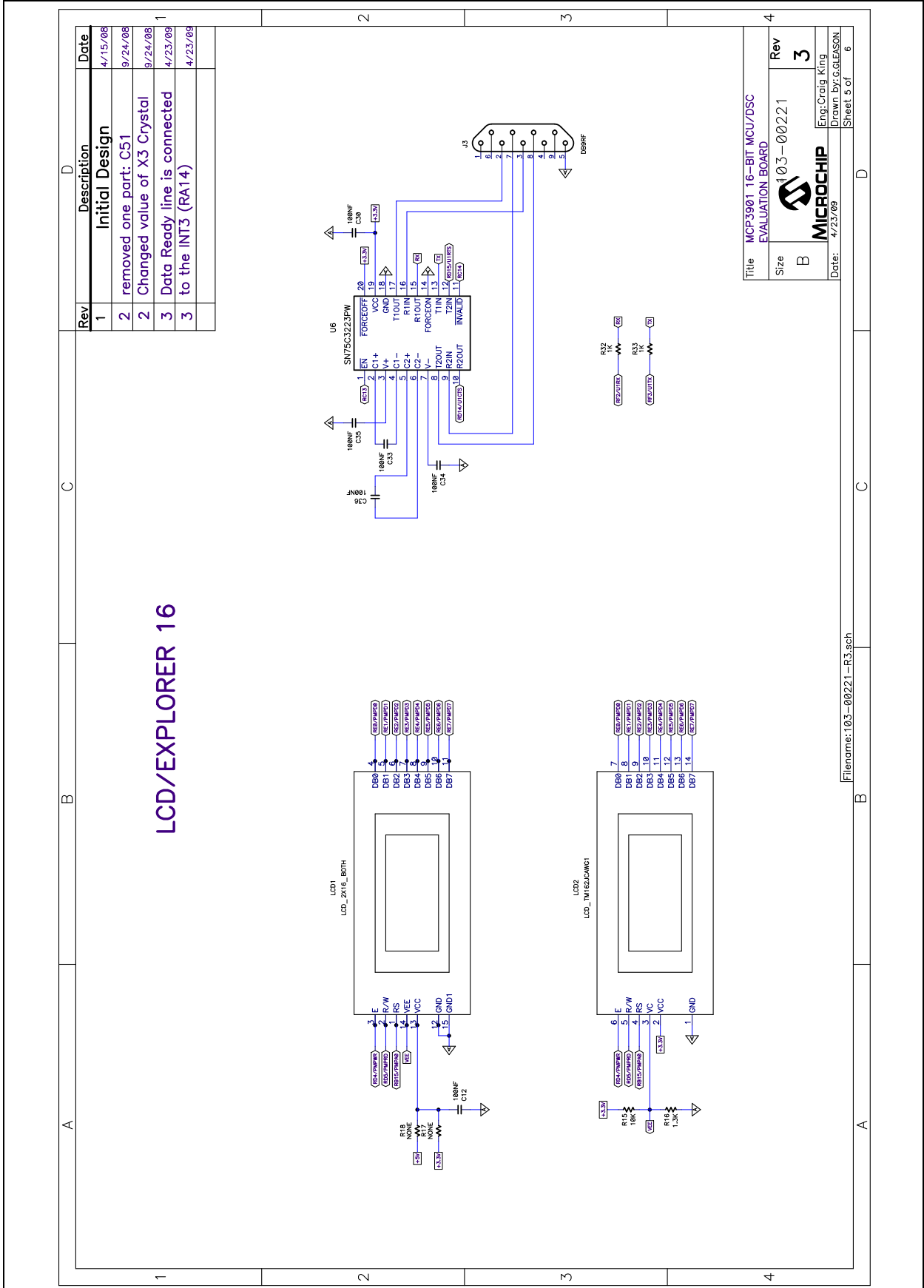
- Schematic - Analog
- Schematic - LCD and UART
- Schematic - USB and Memory
- Schematic - Microcontroller (MCU)
- Schematic - PIM Module
- Schematic - Power
- Board - Top Trace and Top Silk
- Board - Bottom Trace and Bottom Silk
- Board - Layer #2 VDD
- Board - Layer #3 GND
- Board - Top Silk and Pads
- Board - Bottom Silk and Pads

# MCP3901 ADC Evaluation Board for 16-Bit MCUs User's Guide

## A.2 SCHEMATIC – ANALOG



## A.3 SCHEMATIC – LCD AND UART



# MCP3901 ADC Evaluation Board for 16-Bit MCUs User's Guide

## A.4 SCHEMATIC – USB AND MEMORY

REV	Revision Notes	Date
1	Initial Schematic Design	4/15/08
2	removed one part: C51	9/24/08
2	Changed value of X3 Crystal	9/24/08
3	Data Ready line is connected to the INT3 (RA14)	4/23/09
3		4/23/09

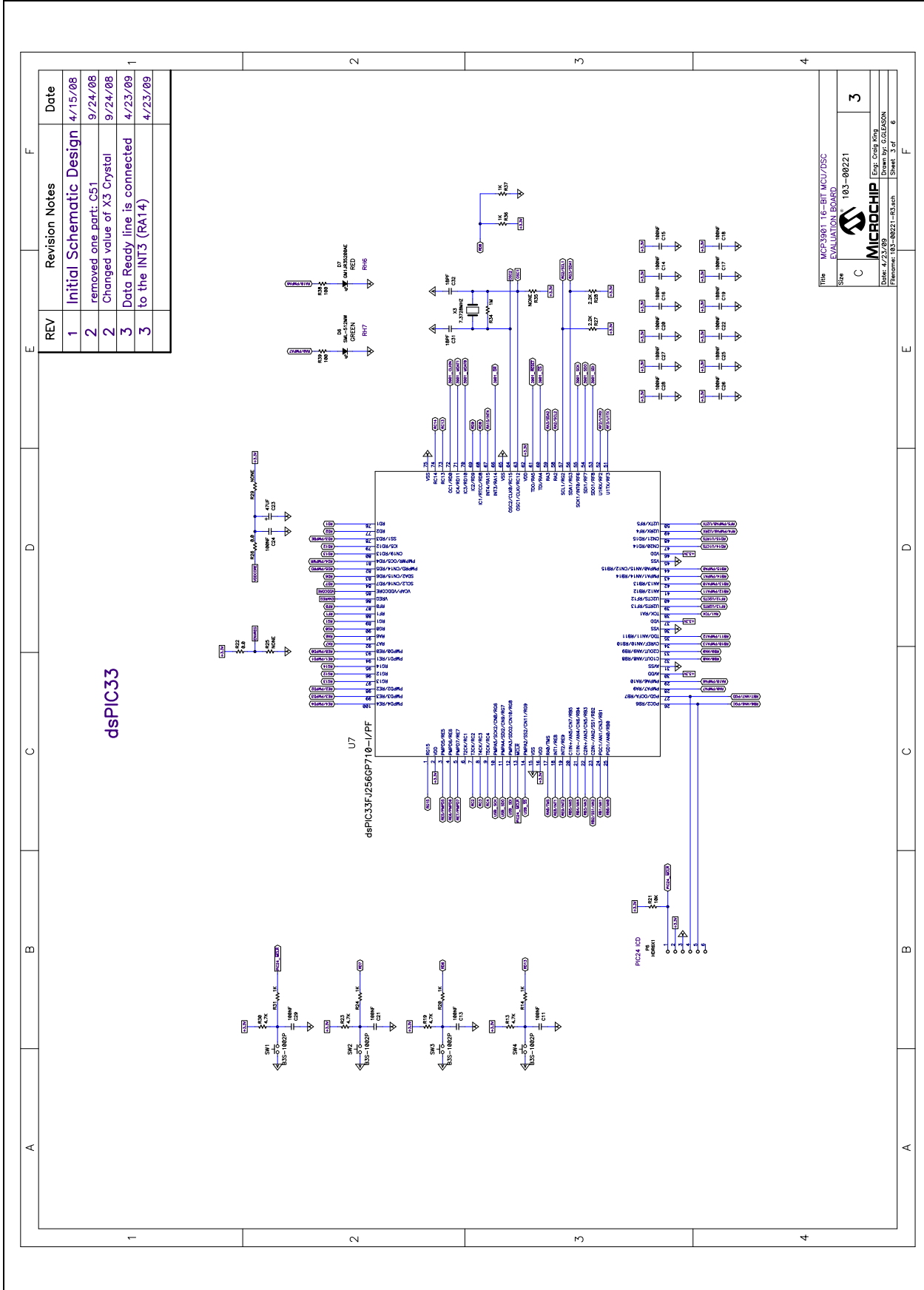
MPU/MEMORY

The schematic diagram illustrates the MPU/MEMORY section of the MCP3901 ADC Evaluation Board. It features three main components: U1 (MCP102), U2 (MCP3901), and U3 (MCP3901). The diagram shows the following connections and components:

- U1 (MCP102):** Connected to the PC16MPLUX pin headers. It includes a 10k resistor (R17) and a 100nF capacitor (C52) for the CS pin.
- U2 (MCP3901):** Connected to the PC16MPLUX pin headers. It includes a 10k resistor (R18) and a 100nF capacitor (C53) for the CS pin. The INT3 pin is connected to RA14.
- U3 (MCP3901):** Connected to the PC16MPLUX pin headers. It includes a 10k resistor (R19) and a 100nF capacitor (C54) for the CS pin.
- External I/O:** Includes connections for PC16MPLUX, PC16MPLUX, and EXTERNAL I/O pin headers.
- Power and Grounding:** Includes connections for 5V, GND, and various capacitors (C51, C52, C53, C54) for decoupling.
- Resistors:** Includes resistors R17, R18, R19, R20, R21, R22, R23, R24, R25, R26, R27, R28, R29, R30, R31, R32, R33, R34, R35, R36, R37, R38, R39, R40, R41, R42, R43, R44, R45, R46, R47, R48, R49, R50, R51, R52, R53, R54, R55, R56, R57, R58, R59, R60, R61, R62, R63, R64, R65, R66, R67, R68, R69, R70, R71, R72, R73, R74, R75, R76, R77, R78, R79, R80, R81, R82, R83, R84, R85, R86, R87, R88, R89, R90, R91, R92, R93, R94, R95, R96, R97, R98, R99, R100.

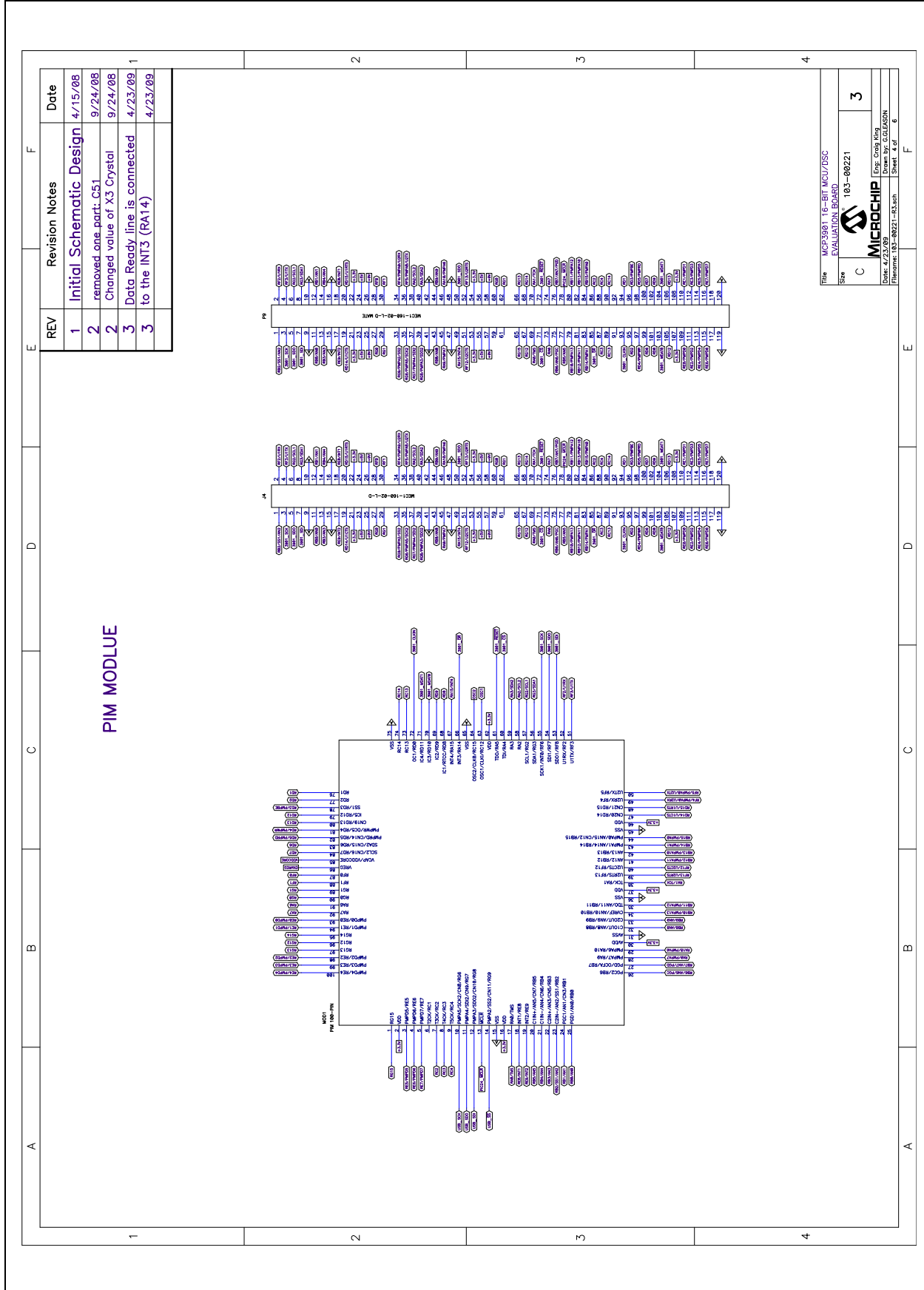
Title: MCP3901 16-BIT MCU/BSC EVALUATION BOARD  
 Size: C 103-00221  
**MICROCHIP**  
 Date: 4/23/09  
 Designer: J. GIBSON  
 Framework: 103-00221-R3.0ch Sheet: 2 of 6

## A.5 SCHEMATIC – MICROCONTROLLER (MCU)

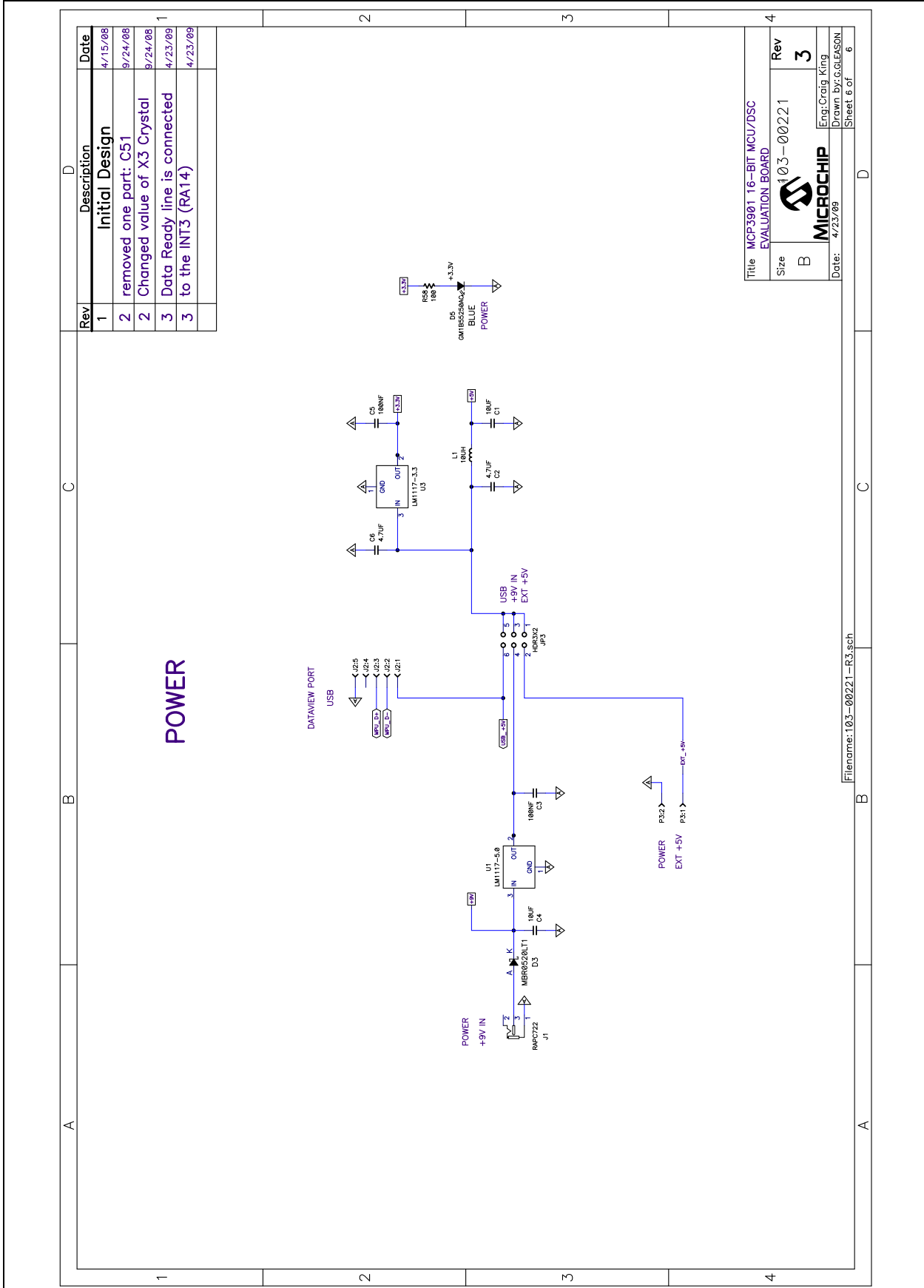


# MCP3901 ADC Evaluation Board for 16-Bit MCUs User's Guide

## A.6 SCHEMATIC – PIM MODULE

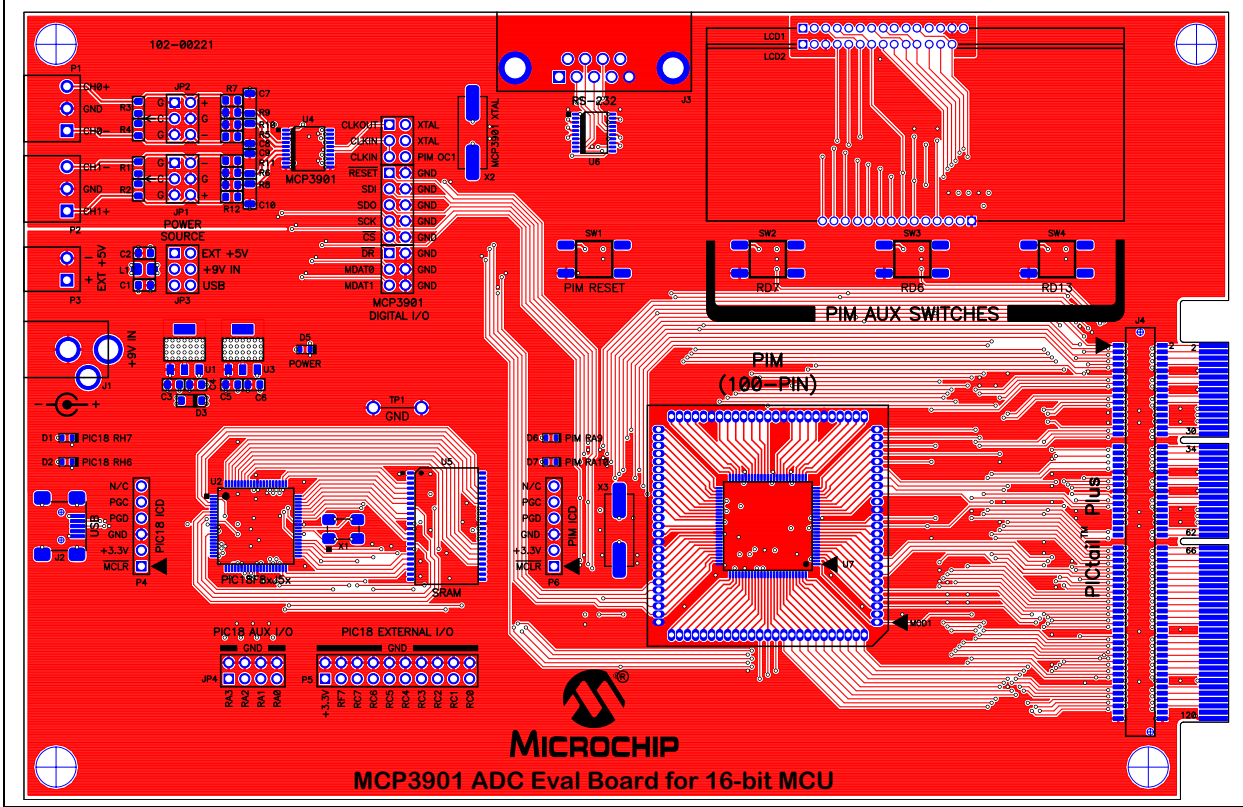


## A.7 SCHEMATIC – POWER

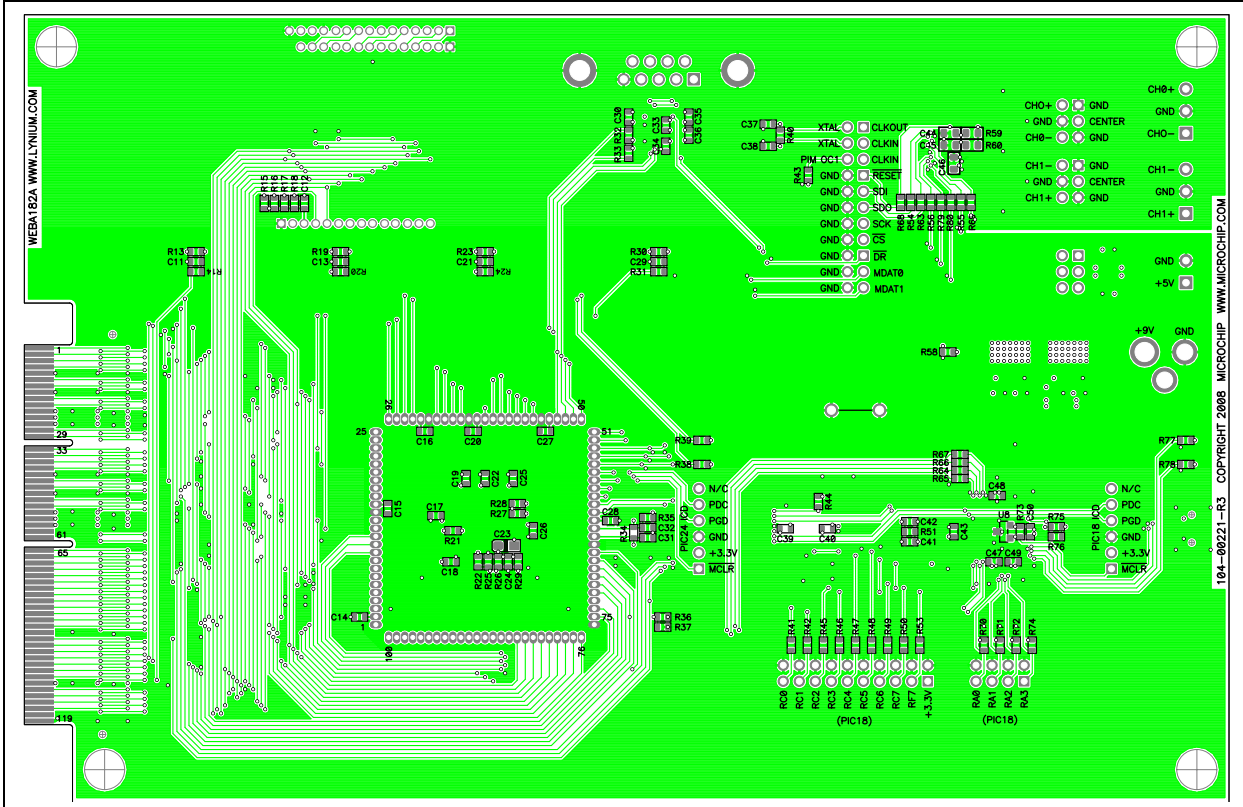


# MCP3901 ADC Evaluation Board for 16-Bit MCUs User's Guide

## A.8 BOARD – TOP TRACE AND TOP SILK

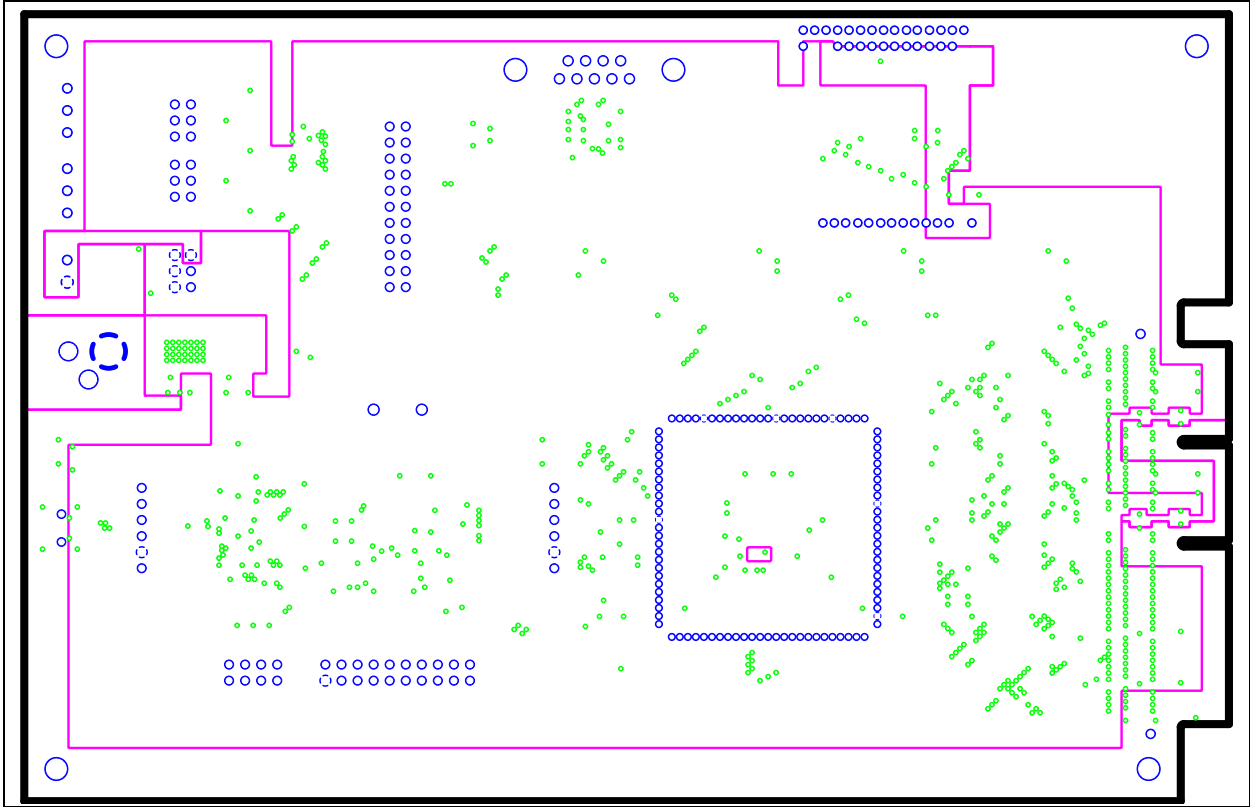


## A.9 BOARD – BOTTOM TRACE AND BOTTOM SILK

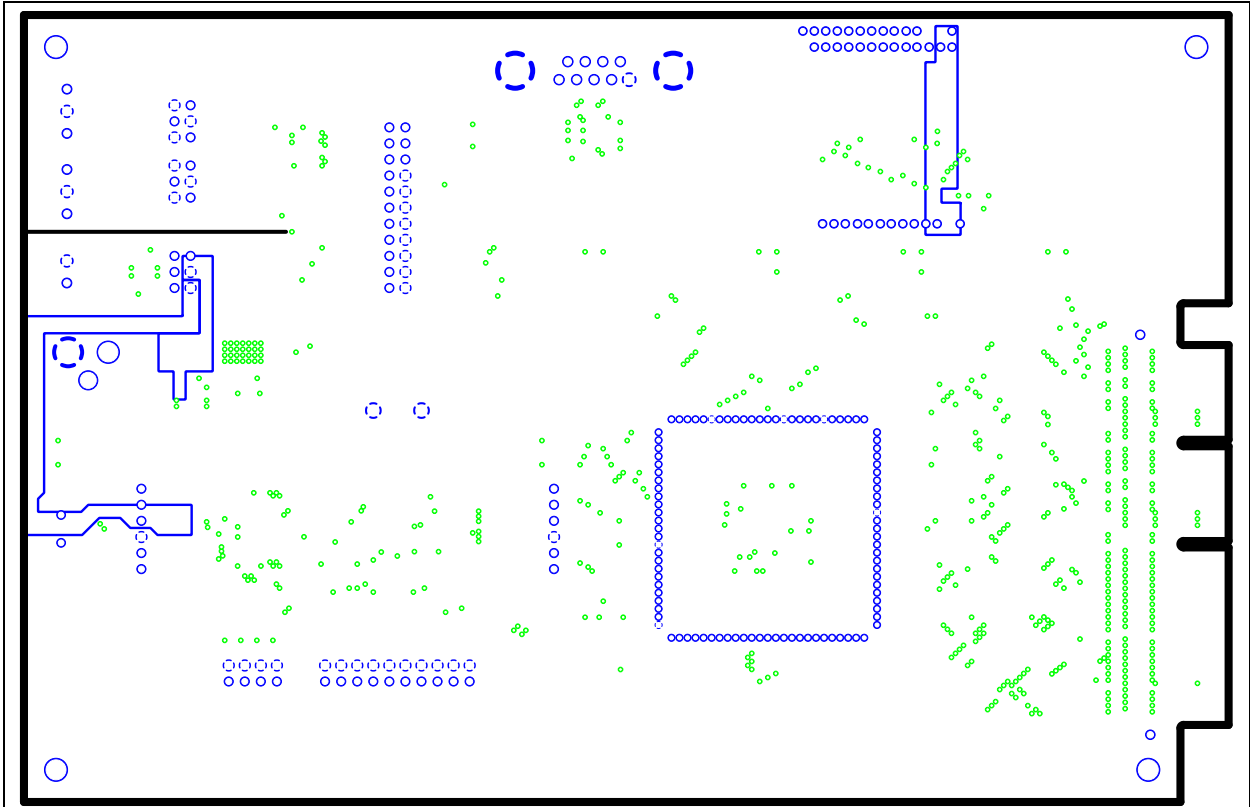




## A.10 BOARD – LAYER #2 VDD

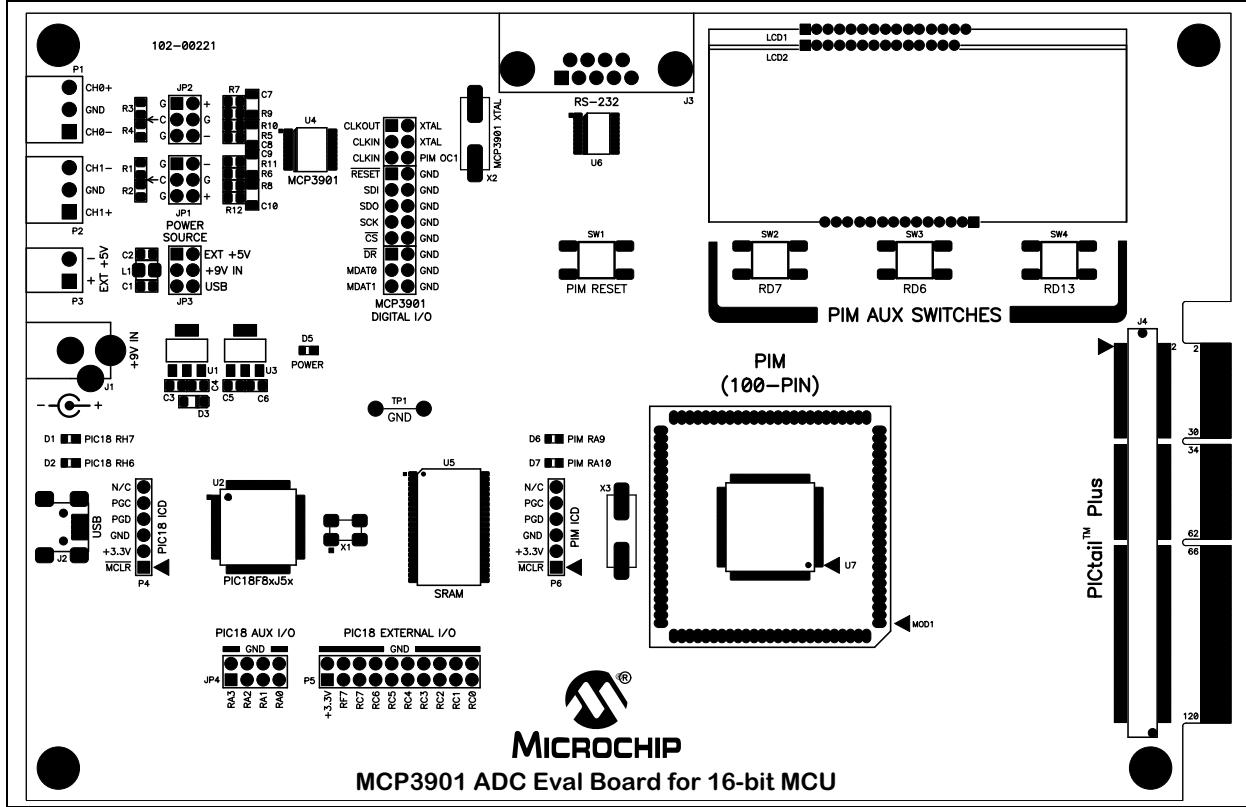


## A.11 BOARD – LAYER #3 GND

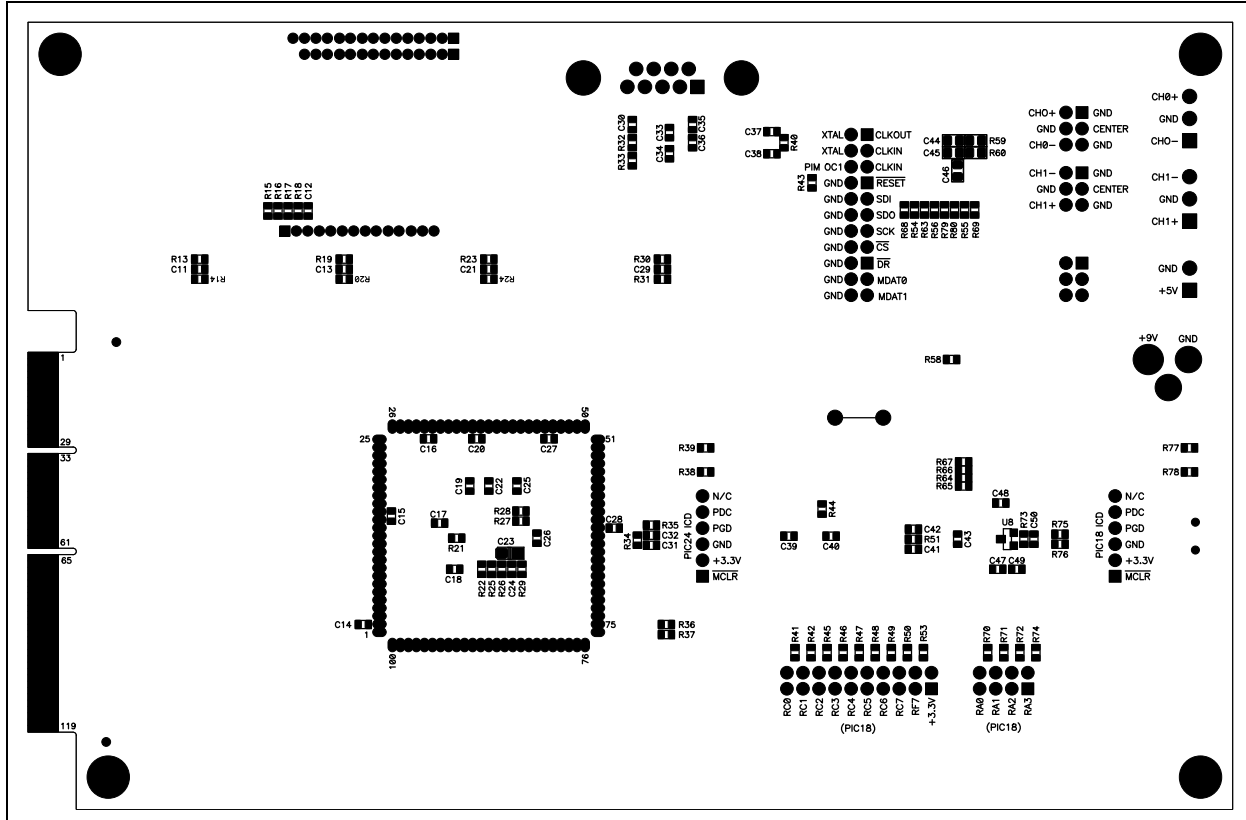


# MCP3901 ADC Evaluation Board for 16-Bit MCUs User's Guide

## A.12 BOARD – TOP SILK AND PADS



## A.13 BOARD – BOTTOM TOP SILK AND PADS





# MCP3901 ADC EVALUATION BOARD FOR 16-BIT MCUs USER'S GUIDE

## Appendix B. Bill Of Materials (BOM)

**TABLE B-1: BILL OF MATERIALS**

Qty	Reference	Description	Manufacturer	Part Number
30	C11<->C22 C24<->C30 C33, C34, C35, C36, C39, C40, C43 C47, C48, C49 C50	CAP CER .1UF 25V 10% X7R 0603	Murata Electronics®	GRM188R71E104KA01D
2	C2, C6	CAP CER 4.7UF 25V X5R 0805	Murata Electronics	GRM21BR61E475KA12L
2	C21, C4	CAP CER 10UF 16V X5R 0805	Murata Electronics	GRM21BR61C106KE15L
1	C23	CAPACITOR TANT 47UF 6.3V 20% SMD	Kemet® Electronics Corp.	T491A476M006AT
5	C3, C5, C44 C45, C46	CAP CER .1UF 25V 10% X7R 0805	Murata Electronics	GRM21BR71E104KA01L
6	C31, C32, C37 C38, C41, C42	CAP CER 18PF 50V 5% C0G 0603	Murata Electronics North America	GRM1885C1H180JA01D
4	C7, C8, C9, C10	CAP CER 68000PF 50V C0G 1206	Murata Electronics	GRM31C5C1H683JA01L
2	D1, D6	LED 570NM GRN WHT/DIFF 0603 SMD	Rohm	SML-512MWT86
2	D2, D7	LED RED 470NM CLEAR LENS (0603 Red)	PARA LIGHT	L-C192KRCT-U1
1	D3	DIODE SCHOTTKY 20V 0.5A SOD123	ON Semiconductor®	MBR0520LT1G
1	D5	LED BLUE 470NM CLEAR LENS (0603 Blue)	PARA LIGHT	L-C191LBCT-U1
4	Ea. Conner of PCB	STANDOFF HEX .500/4-40THR NYLON	Keystone Electronics®	1902C
4	Ea. Conner of PCB	SCREW MACH PHIL 4-40X3/8 NYLON	Building Fasteners	NY PMS 440 0038 PH
1	J1	CONN POWERJACK MINI .08" R/A T/H	Switchcraft Inc.	RAPC722X
1	J2	Mini USB Type B Surface Mount	SAMTEC	MUSB-05-S-B-SM-A
1	J3	CONN D-SUB RCPT R/A 9POS 15GOLD	Tyco® Electronics Amp	1734354-2
3	JP1, JP2, JP3	3 X 2 Header 2.54mm on center 6 mm/2.5mm	SAMTEC	TSW-103-07-G-D
1	JP4	4 X 2 Header 2.54mm on center 6 mm/2.5mm	SAMTEC	TSW-104-07-G-D
1	JP5, P8, JP6	11 X 2 Header 2.54mm on center 6 mm/2.5mm	SAMTEC	TSW-111-07-G-D

**Note 1:** The components listed in this Bill of Materials are representative of the PCB assembly. The released BOM used in manufacturing uses all RoHS-compliant components.

# MCP3901 ADC Evaluation Board for 16-Bit MCUs User's Guide

**TABLE B-1: BILL OF MATERIALS (CONTINUED)**

Qty	Reference	Description	Manufacturer	Part Number
1	L1	Shielded 10uH Power Inductor 0805	Coilcraft	0805PS-103KLC
1	LCD2	16X2 FTN Reflective No. BLWT COG 3V	TianMa	TM162JCAWG1
4	MOD1	25 X 1 Header 1.27mm on center	SAMTEC	MTMS-125-01-G-S-230
1	P1, P2	CONN TERM BLK PLUG 6A 3.5MM 3POS	Keystone Electronics	8723
1	P3	CONN TERM BLK PLUG 6A 3.5MM 2POS	Keystone Electronics	8722
1	P3	TERM BLK PIN HEADER 24Pin Pos One 24 Pin Header is enough for 3 Boadrs	Keystone Electronics	8724
1	P5	10 X 2 Header 2.54mm on center 6 mm/2.5mm	SAMTEC	TSW-110-07-G-D
1	PCB	RoHS Compliant Bare PCB, MCP3901 Eval Board for 16-bit MCU	Microchip Technology Inc.	104-00221
4	R13, R19 R23, R30	RES 4.70K OHM 1/10W 1% 0603 SMD	Rohm	MCR03EZPFX4701
8	R14, R20, R24 R3, R32, R33 R36, R37	RES 1.00K OHM 1/10W 1% 0603 SMD	Rohm	MCR03EZPFX1001
3	R15, R21, R73	RES 10.0K OHM 1/10W 1% 0603 SMD	Rohm	MCR03EZPFX1002
1	R16	RES 1.30K OHM 1/10W 1% 0603 SMD	Rohm	MCR03EZPFX1301
2	R22, R26	RES 0.0 OHM 1/10W 5% 0603 SMD	Rohm	MCR03EZPJ000
2	R27, R28	RES 2.20K OHM 1/10W 1% 0603 SMD	Rohm	MCR03EZPFX2201
3	R34, R40, R51	RES 1.00M OHM 1/10W 1% 0603 SMD	Rohm	MCR03EZPFX1004
28	R38, R39, R41 R42, R43, R45 R46, R47, R48 R49, R50, R53 R54, R55, R56 R58, R63, R64 R65, R66, R67 R68, R69, R77 R78, R79, R80	RES 100 OHM 1/10W 1% 0603 SMD	Rohm	MCR03EZPFX1000
7	R44, R70, R71 R72, R74, R75 R76	RES 100K OHM 1/10W 1% 0603 SMD	Rohm	MCR03EZPFX1003
4	R5, R7 R11, R12	RES 1.0K OHM .1% 1/4W 0805 SMD	Susumu Co Ltd	RGH2012-2E-P-102-B
2	R59, R60	RES 10.0 OHM 1/8W 1% 0805 SMD	Rohm	MCR10EZHF10R0
4	SW1, SW2 SW3, SW4	SWITCH TACT 6MM 230GF H=4.3MM	Omron Electronics Inc-ECB Div	B3S-1002P

**Note 1:** The components listed in this Bill of Materials are representative of the PCB assembly. The released BOM used in manufacturing uses all RoHS-compliant components.

# Bill Of Materials (BOM)

**TABLE B-1: BILL OF MATERIALS (CONTINUED)**

Qty	Reference	Description	Manufacturer	Part Number
1	TP1	Wire Test Point 0.3" Length	Component Corporation	PJ-202-30
1	U1	IC REG LDO 800MA 5.0V SOT-223	National Semiconductor	LM1117MP-5.0/NOPB
1	U2	IC PIC USB MCU FLASH 48KX16 80TQFP	Microchip	PIC18F86J55-I/PT
1	U3	IC REG LDO 800MA 3.3V SOT-223	National Semiconductor®	LM1117MP-3.3/NOPB
1	U4	IC ENERGY METER 24SSOP	Microchip Technology Inc.	MCP3901-I/SS
1	U5	IC SRAM 4MB ASYNC 44-TSOPII	ISSI, Integrated Silicon Solution Inc	IS61LV5128AL-10TLI
1	U6	IC DRVRCVR MLTCH RS232 20TSSOP	Texas Instruments	SN75C3223PW
1	U8	2.7V Voltage Supervisor SOT-23-3	Microchip Technology Inc.	MCP130T-270I/TT
1	X1	CRYSTAL 48.0000MHZ 10PF SMD	Abracon Corporation	ABM3B-48.000MHZ-10-1-U-T
1	X2	CRYSTAL 3.579545MHZ 18PFFUND SMD	Abracon Corporation	ABLS-3.579545MHZ-B2-T
1	X3	CRYSTAL 7.3728MHZ 18PF FUND SMD	Abracon Corporation	ABLS-7.3728MHZ-B2-T

**Note 1:** The components listed in this Bill of Materials are representative of the PCB assembly. The released BOM used in manufacturing uses all RoHS-compliant components.

**TABLE B-2: BILL OF MATERIALS — COMPONENTS NOT INSTALLED**

Qty	Reference	Description	Manufacturer	Part Number
	J4	DO NOT INSTALL 120-pin MINI EDGE CARD SOCKET	SAMTEC	MEC1-160-02-L-D-A
1	LCD1	DO NOT INSTALL	—	—
1	P9	DO NOT INSTALL	—	—
13	R1, R2, R3, R4 R6, R8, R9, R10, R17, R18, R25 R29, R35	DO NOT INSTALL	—	—
1	U7	DO NOT INSTALL	—	—

**Note 1:** The components listed in this Bill of Materials are representative of the PCB assembly. The released BOM used in manufacturing uses all RoHS-compliant components.



# MICROCHIP

## Worldwide Sales and Service

### AMERICAS

**Corporate Office**  
2355 West Chandler Blvd.  
Chandler, AZ 85224-6199  
Tel: 480-792-7200  
Fax: 480-792-7277  
Technical Support:  
<http://support.microchip.com>  
Web Address:  
[www.microchip.com](http://www.microchip.com)

**Atlanta**  
Duluth, GA  
Tel: 678-957-9614  
Fax: 678-957-1455

**Boston**  
Westborough, MA  
Tel: 774-760-0087  
Fax: 774-760-0088

**Chicago**  
Itasca, IL  
Tel: 630-285-0071  
Fax: 630-285-0075

**Cleveland**  
Independence, OH  
Tel: 216-447-0464  
Fax: 216-447-0643

**Dallas**  
Addison, TX  
Tel: 972-818-7423  
Fax: 972-818-2924

**Detroit**  
Farmington Hills, MI  
Tel: 248-538-2250  
Fax: 248-538-2260

**Kokomo**  
Kokomo, IN  
Tel: 765-864-8360  
Fax: 765-864-8387

**Los Angeles**  
Mission Viejo, CA  
Tel: 949-462-9523  
Fax: 949-462-9608

**Santa Clara**  
Santa Clara, CA  
Tel: 408-961-6444  
Fax: 408-961-6445

**Toronto**  
Mississauga, Ontario,  
Canada  
Tel: 905-673-0699  
Fax: 905-673-6509

### ASIA/PACIFIC

**Asia Pacific Office**  
Suites 3707-14, 37th Floor  
Tower 6, The Gateway  
Harbour City, Kowloon  
Hong Kong  
Tel: 852-2401-1200  
Fax: 852-2401-3431

**Australia - Sydney**  
Tel: 61-2-9868-6733  
Fax: 61-2-9868-6755

**China - Beijing**  
Tel: 86-10-8528-2100  
Fax: 86-10-8528-2104

**China - Chengdu**  
Tel: 86-28-8665-5511  
Fax: 86-28-8665-7889

**China - Chongqing**  
Tel: 86-23-8980-9588  
Fax: 86-23-8980-9500

**China - Hong Kong SAR**  
Tel: 852-2401-1200  
Fax: 852-2401-3431

**China - Nanjing**  
Tel: 86-25-8473-2460  
Fax: 86-25-8473-2470

**China - Qingdao**  
Tel: 86-532-8502-7355  
Fax: 86-532-8502-7205

**China - Shanghai**  
Tel: 86-21-5407-5533  
Fax: 86-21-5407-5066

**China - Shenyang**  
Tel: 86-24-2334-2829  
Fax: 86-24-2334-2393

**China - Shenzhen**  
Tel: 86-755-8203-2660  
Fax: 86-755-8203-1760

**China - Wuhan**  
Tel: 86-27-5980-5300  
Fax: 86-27-5980-5118

**China - Xian**  
Tel: 86-29-8833-7252  
Fax: 86-29-8833-7256

**China - Xiamen**  
Tel: 86-592-2388138  
Fax: 86-592-2388130

**China - Zhuhai**  
Tel: 86-756-3210040  
Fax: 86-756-3210049

### ASIA/PACIFIC

**India - Bangalore**  
Tel: 91-80-3090-4444  
Fax: 91-80-3090-4123

**India - New Delhi**  
Tel: 91-11-4160-8631  
Fax: 91-11-4160-8632

**India - Pune**  
Tel: 91-20-2566-1512  
Fax: 91-20-2566-1513

**Japan - Yokohama**  
Tel: 81-45-471- 6166  
Fax: 81-45-471-6122

**Korea - Daegu**  
Tel: 82-53-744-4301  
Fax: 82-53-744-4302

**Korea - Seoul**  
Tel: 82-2-554-7200  
Fax: 82-2-558-5932 or  
82-2-558-5934

**Malaysia - Kuala Lumpur**  
Tel: 60-3-6201-9857  
Fax: 60-3-6201-9859

**Malaysia - Penang**  
Tel: 60-4-227-8870  
Fax: 60-4-227-4068

**Philippines - Manila**  
Tel: 63-2-634-9065  
Fax: 63-2-634-9069

**Singapore**  
Tel: 65-6334-8870  
Fax: 65-6334-8850

**Taiwan - Hsin Chu**  
Tel: 886-3-6578-300  
Fax: 886-3-6578-370

**Taiwan - Kaohsiung**  
Tel: 886-7-213-7830  
Fax: 886-7-330-9305

**Taiwan - Taipei**  
Tel: 886-2-2500-6610  
Fax: 886-2-2508-0102

**Thailand - Bangkok**  
Tel: 66-2-694-1351  
Fax: 66-2-694-1350

### EUROPE

**Austria - Wels**  
Tel: 43-7242-2244-39  
Fax: 43-7242-2244-393

**Denmark - Copenhagen**  
Tel: 45-4450-2828  
Fax: 45-4485-2829

**France - Paris**  
Tel: 33-1-69-53-63-20  
Fax: 33-1-69-30-90-79

**Germany - Munich**  
Tel: 49-89-627-144-0  
Fax: 49-89-627-144-44

**Italy - Milan**  
Tel: 39-0331-742611  
Fax: 39-0331-466781

**Netherlands - Drunen**  
Tel: 31-416-690399  
Fax: 31-416-690340

**Spain - Madrid**  
Tel: 34-91-708-08-90  
Fax: 34-91-708-08-91

**UK - Wokingham**  
Tel: 44-118-921-5869  
Fax: 44-118-921-5820

08/04/10