

## High Voltage (Plate) 700 Series

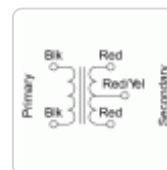
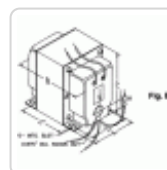
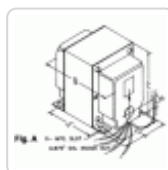
115 V or 117/234 V Primary

### Features



- Two versions available:
  - Primary 115 VAC, 50/60 Hz. or
  - Primary 117/234 VAC, 50/60 Hz.
- At 2,000 VAC and above, secondary leads are through rubber bushings (figure B).
- Units can be run full wave bridge or full wave C.T.
- V.A. is a C.C.S. rating
- Current ratings are CCS (Continuous Commercial Service) & ICAS ratings (Intermittent Commercial or Amateur Service).
- Enclosed, 4 hole chassis mount.
- Minimum 6" long leads.
- Class A insulation (105 degrees C).
- Hi-Pot test at a minimum of twice secondary voltage
- Conservative designs - CSA certified (209651).
- For other H.V. combinations check out our **Peter W. Dahl** series as well.
- **Notes:**
  - VA rating specified is CCS (Continuous Commercial Service)
  - ICAS ratings (Intermittent Commercial or Amateur Service)
  - 115VAC only models - Input Black & Black
  - Dual Primary (117/230VAC) models - 117VAC input: connect Blue to Black and Brown to White.
  - 234VAC input: connect Brown to Black - input is Blue & White

### Gallery



Part No. 115 VAC Primary	Part No. 117/234 VAC Primary	A.C. High Voltage Secondary		H.V. Secondary Current		Drawing Type	Dimensions					Weight (Lbs)
		V.A.	R.M.S.	(CCS)	(ICAS)		A	B	C	D	E	
710	710A	110	750V C.T.	147ma.	221ma.	A	3.75	4.13	4.50	3.00	2.25	7.2
712	712A	130	850V C.T.	215ma.	323ma.	A	3.75	4.63	4.50	3.00	2.75	8.8000000000000001
714	714A	180	1,020V C.T.	170ma.	255ma.	A	3.13	3.75	3.75	2.50	2.38	5.5
715	715A	200	1,020V C.T.	300ma.	450ma.	A	3.75	4.63	4.50	3.00	2.75	9
717	717A	510	1,020V C.T.	500ma.	750ma.	A	5.00	5.25	6.50	4.56	3.25	17.7
718	718A	235	1,250V C.T.	200ma.	300ma.	A	3.75	4.38	4.50	3.00	2.50	8
720	720A	370	1,250V C.T.	300ma.	450ma.	A	3.75	5.38	4.50	3.00	3.50	12

Part No. 115 VAC Primary	Part No. 117/234 VAC Primary	A.C. High Voltage Secondary		H.V. Secondary Current		Drawing Type	Dimensions					Weight (Lbs)
		V.A.	R.M.S.	(CCS)	(ICAS)		A	B	C	D	E	
<b>722</b>	<b>722A</b>	625	1,250V C.T.	500ma.	750ma.	A	5.00	5.25	6.50	4.56	3.25	17.7
<b>724</b>	<b>724A</b>	345	1,500V C.T.	226ma.	339ma.	A	3.75	5.25	4.50	3.00	3.38	12
<b>726</b>	<b>726A</b>	312	1,780V C.T.	202ma.	299ma.	A	3.75	5.25	4.50	3.00	3.38	12
<b>728</b>	<b>728A</b>	210	2,000V C.T.	175ma.	263ma.	B	3.75	5.25	4.50	3.00	3.38	12
<b>732</b>	<b>732A</b>	500	2,500V C.T.	200ma.	300ma.	B	5.00	5.25	6.50	4.56	3.25	17.7
<b>733</b>	<b>733A</b>	750	2,500V C.T.	300ma.	450ma.	B	5.00	6.00	6.50	4.56	4.00	24
<b>735</b>	<b>735A</b>	735	3,000V C.T.	250ma.	375ma.	B	5.00	6.00	6.50	4.56	4.00	24
<b>737</b>	<b>737A</b>	1200	3,000V C.T.	400ma.	600ma.	B	5.00	7.00	6.50	4.56	5.00	28.5
<b>739</b>	<b>739A</b>	1400	3,500V C.T.	400ma.	600ma.	B	5.00	7.63	6.50	4.56	5.50	34.7

*Data subject to change without notice*

© 2017. Hammond Manufacturing Ltd. All rights reserved.