

Bright Light.
Tiny Package.

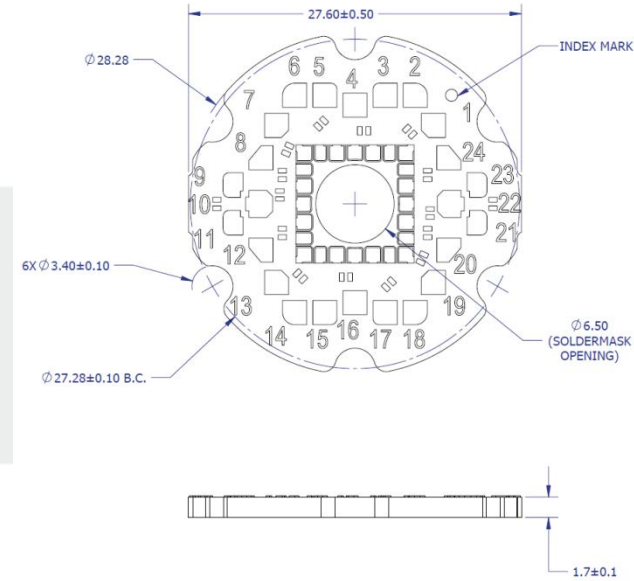
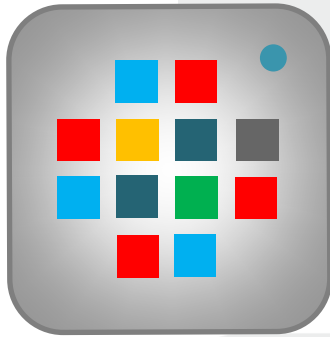
**12-die, 6 color Horticulture Emitter
LZC-03H100-0000**

Pinout Configuration

Horticulture emitter configuration

LZC-03H100-0000

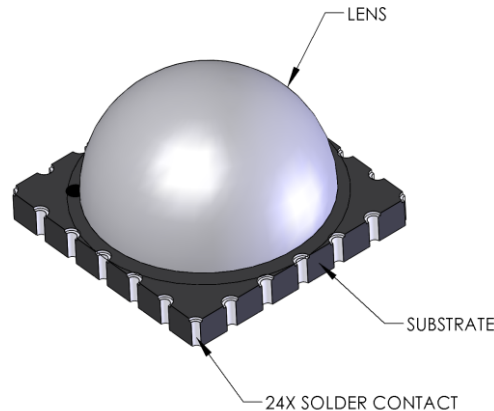
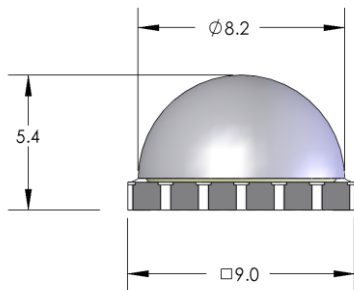
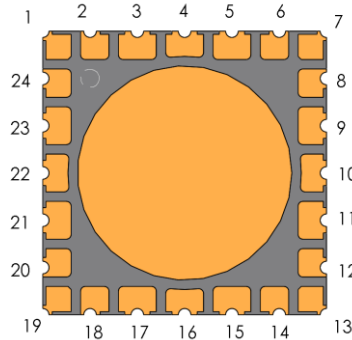
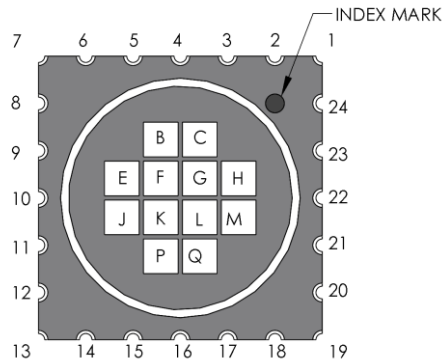
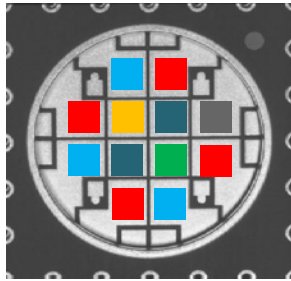
- 6 different channels defined by LinkedIn forum
- Layout based on LZC with frosted lens
- Optional with R&D MCPCB, LZC-R3H100-0000



Option C 2		1-chan	2-chan	2-chan	4-chan	4-chan	4-chan	4-chan	6-chan	6-chan	6-chan	6-chan	6-chan	6-chan
nm	Vf	ch-1	ch-1	ch-2	ch-1	ch-2	ch-3	ch-4	ch-1	ch-2	ch-3	ch-4	ch-5	ch-6
400	3.3	1	1		1				1					
450	3.3	1	1		1					2				
450	3.3	1	1		1					2				
450	3.3	1	1		1					2				
525	4.2	1	1				3				3			
590	2.45	1	1				3					4		
665	2.65	1	1			2							5	
665	2.65	1	1			2							5	
665	2.65	1	1			2							5	
665	2.65	1	1			2							5	
730	2.25	1		2				4						6
730	2.25	1		2				4						6
Channel voltages> at 700mA drive level		34.95	30.45	4.5	13.2	10.6	6.65	4.5	3.3	9.9	4.2	2.45	10.6	4.5

Pin layout (updated 4/22/2016)

LZC-03H100-0000



Pin Out			
Pin	Die	Color	Polarity
1	G	Far Red	+ Anode
2	G	Far Red	- Cathode
3	C	Deep red	+ Anode
4	C	Deep red	- Cathode
5	B	Blue	+ Anode
6	B	Blue	- Cathode
7	F	PC-Amber	- Anode
8	F	PC-Amber	+ Cathode
9	E	Deep red	+ Anode
10	E	Deep red	- Cathode
11	J	Blue	+ Anode
12	J	Blue	- Cathode
13	K	Far Red	+ Anode
14	K	Far Red	- Cathode
15	P	Deep red	+ Anode
16	P	Deep red	- Cathode
17	Q	Blue	+ Anode
18	Q	Blue	- Cathode
19	L	Green	- Cathode
20	L	Green	+ Anode
21	M	Deep red	+ Anode
22	M	Deep red	- Cathode
23	H	Violet	- Cathode
24	H	Violet	+ Anode