

Electrical Characteristics

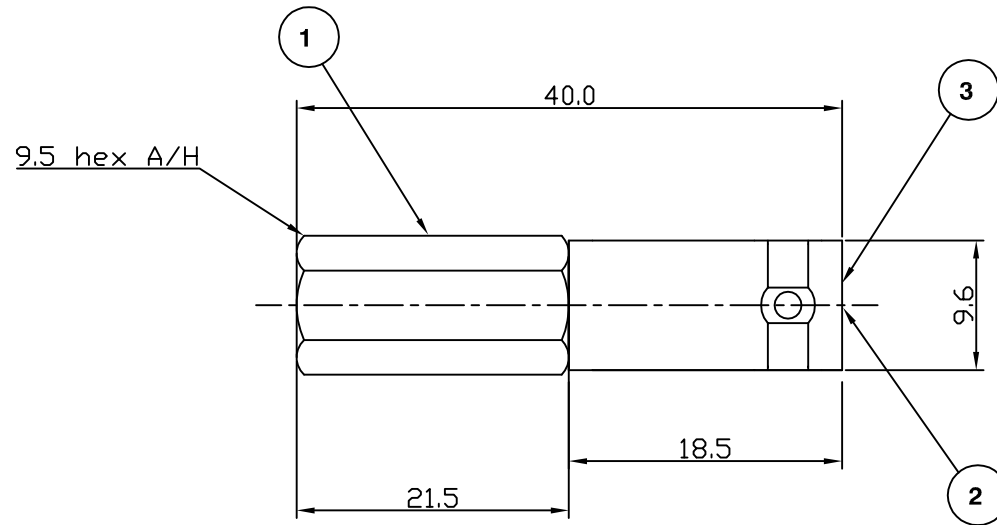
Nominal Impedance:	50 ohms
Frequency Range:	DC to 4 GHz
VSWR:	1.3:1 maximum
Working Voltage	500V RMS Max
Dielectric Withstand Voltage	1500V RMS Max
Insertion Loss	0.2dB max.@3GHz
RF Leakage	-55dB max.@3GHz

Mechanical Characteristics

Mating Cycles:	500 cycles minimum
Interface Dimensions:	Conform to MIL-C-39012

Environmental Characteristics

Temperature Range:	-55 °C to +85 °C
--------------------	------------------



PART	DESCRIPTION
1	Body Brass, nickel plated 1.78 μm
2	Contact Phosphor Bronze, gold plated 0.076 μm - 0.127 μm
3	Dielectric POM

DESCRIPTION OF REVISION	APPVD	ISS	DATE
Address & RoHS Update	JT	4	25 Mar 10
Change of supplier, New design	KA	3	10 Sept 08
Dimensional Changes updated	KA	2	10 July 08
First Issue	JW	1	16 Aug 06



Cinch Connectivity Solutions
 7-13 Russel Way,
 Widford Industrial Estate,
 Chelmsford, Essex,
 CM1 3AA, UK.
 Tel: +44 (0) 1245 359515
 Fax: +44 (0) 1245 358938

SCALE: Not To Scale

DIMENSIONS: mm

TOLERANCES:
 ± 0.2mm unless
 otherwise stated

DRAWN BY: J Williams

CHECKED BY: M Terry

APPROVED BY: A Tusi

DATE: 16 Aug 06

TITLE:

**Twist-On BNC Jack
 for RG59**

PART NUMBER:

TOBNC30-59/62

PAGE: 1 of 1