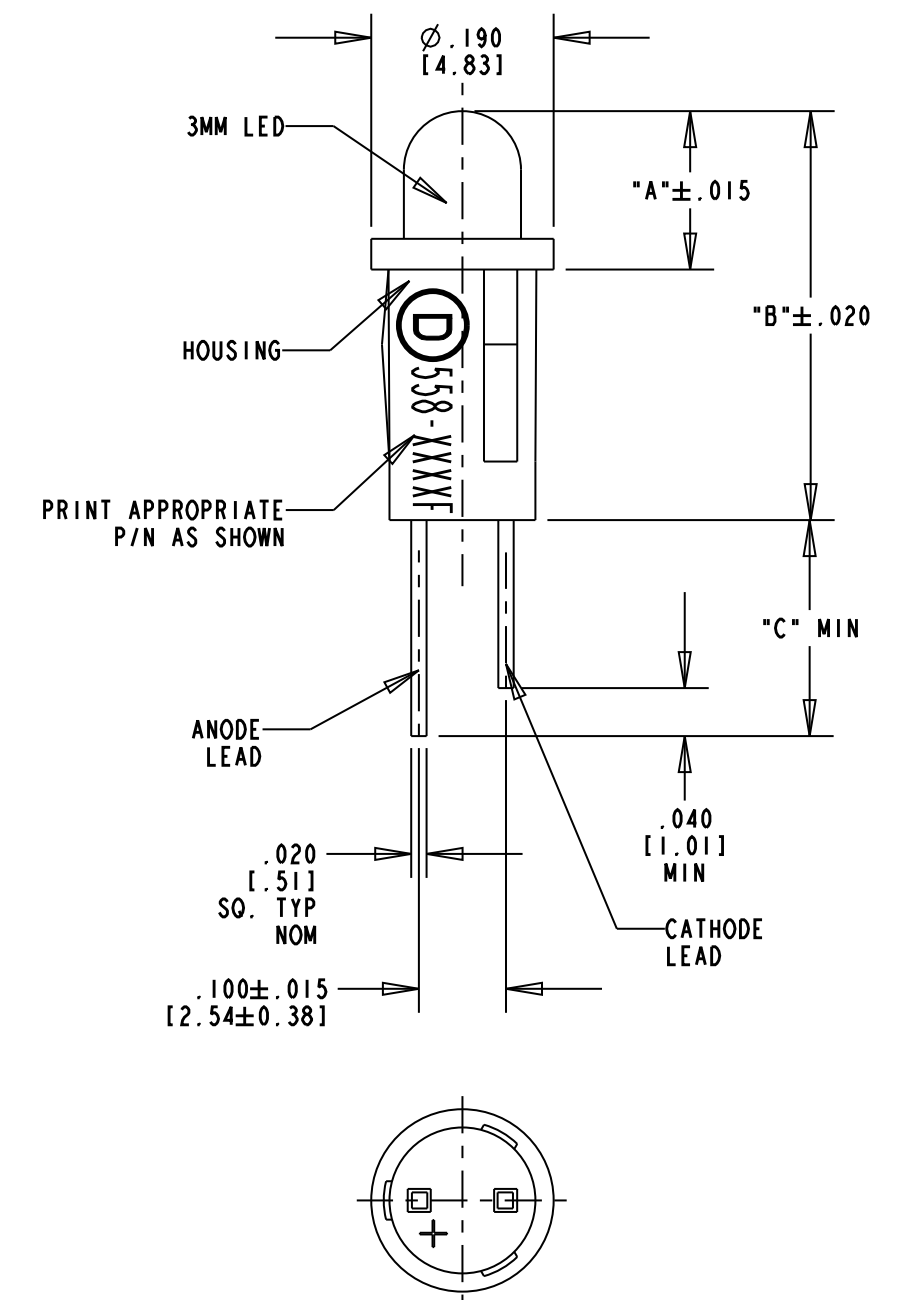


| CATALOG NO. | V _f (V) | | I _f (mA) | | LED EPOXY COLOR | LED CHIP | PEAK WAVELENGTH (nm) | LUMINOUS INTENSITY I _f (mcd) | | REVERSE VOLTAGE V _F (V) | DIM "A" | DIM "B" | DIM "C" |
|---------------|--------------------|-----|---------------------|-----|----------------------------|-----------|----------------------|---|-------|------------------------------------|---------|---------|---------|
| | TYP | MAX | TYP | MAX | | | | MIN | TYP | | | | |
| | | | | | | | | | | | | | |
| 558-0101-001F | 2.0 | 3.0 | 10 | 20 | RED DIFF. | GaAs | 650 | 3.6 | 10.0 | 3 | .111 | .391 | .755 |
| 558-0102-001F | 5.0 | | 10 | 15 | RED DIFF. | GaAsP/GaP | 635 | 1.5 | 4.0 | 5 | .101 | .381 | .828 |
| 558-0201-001F | 2.1 | 3.0 | 10 | 25 | GREEN DIFF. | GaP | 563 | 5.6 | 16.0 | 3 | .111 | .391 | .755 |
| 558-0202-001F | 5.0 | | 10 | 15 | GREEN DIFF. | GaP | 565 | 2.0 | 8.0 | 5 | .101 | .381 | .828 |
| 558-0301-001F | 2.1 | 3.0 | 10 | 20 | YELLOW DIFF. | GaAsP/GaP | 585 | 2.2 | 6.3 | 3 | .111 | .391 | .755 |
| 558-0302-001F | 5.0 | | 10 | 15 | YELLOW DIFF. | GaAsP/GaP | 585 | 2.0 | 8.0 | 5 | .101 | .381 | .828 |
| 558-0401-001F | 1.5 | 2.2 | 10 | 25 | ORANGE DIFF. | GaAsP/GaP | 600 | 3.0 | 6.5 | 5 | .101 | .381 | .848 |
| 558-0501-001F | 2.1 | 2.8 | 20 | 40 | WATER CLEAR | GaP | 565 | 19.0 | 70.0 | 4 | .101 | .381 | .828 |
| 558-0601-001F | 1.9 | 2.4 | 20 | 50 | WATER CLEAR | AlInGaP | 594 | 35.0 | 200.0 | 5 | .101 | .381 | .902 |
| 558-0701-001F | 1.8 | 2.4 | 20 | 40 | WATER CLEAR | AlGaAs | 660 | 60.0 | 170.0 | 4 | .101 | .381 | .828 |
| 558-1101-001F | 1.7 | 2.2 | 2 | 7 | RED DIFF. | GaAsP/GaP | 635 | 1.0 | 1.8 | 5 | .101 | .381 | .878 |
| 558-1201-001F | 1.8 | 2.7 | 2 | 7 | YELLOW DIFF. | GaAsP/GaP | 585 | 1.0 | 1.6 | 5 | .101 | .381 | .878 |
| 558-1301-001F | 1.9 | 2.2 | 2 | 7 | GREEN DIFF. | GaP | 565 | 1.0 | 1.6 | 5 | .101 | .381 | .878 |
| 558-1501-001F | 2.1 | 2.8 | 10 | 30 | GREEN TINTED NON-DIFFUSED | GaP | 565 | 19.0 | 70.0 | 5 | .101 | .381 | .828 |
| 558-1601-001F | 2.1 | 2.8 | 10 | 20 | YELLOW TINTED NON-DIFFUSED | GaAsP/GaP | 585 | 5.6 | 19.0 | 5 | .101 | .381 | .828 |
| 558-1701-001F | 1.8 | 2.4 | 20 | 40 | RED TINTED NON-DIFFUSED | AlGaAs | 660 | 40.0 | 135.0 | 4 | .101 | .381 | .828 |
| 558-1801-001F | 1.8 | 2.4 | 20 | 40 | RED DIFF. | AlGaAs | 660 | 19.0 | 60.0 | 4 | .101 | .381 | .828 |

| REV | ECN NO | REVISIONS | DRN | CKD | APP | DATE |
|-----|--------|---|-----|-----|-----|---------|
| A | — | NEW RELEASE | TWC | TC | RP | 8-30-05 |
| B | — | REMOVED WIRE AND PLATING CALLOUTS; ADDED RoHS COMPLIANT NOTE AND "REV" COLUMN TO REVISION BLOCK | TWC | TC | RP | 9-8-05 |
| C | — | ADDED DIM "A", "B", & "C" | AJF | KLJ | CJC | 9-18-09 |



- NOTES:
- *REQUIRES EXTERNAL RESISTOR.
**REQUIRES EXTERNAL RESISTOR, MAX. FORWARD D.C. CURRENT 7mA.
 - RECOMMENDED MOUNTING HOLE: .155 - .158 DIA. ON PANELS .031 THRU .062 THICK.

RoHS Compliant 558-XX0X-001F Snap-in PMI

Part Numbers with the "F" suffix ending are RoHS Compliant.
 Example: 558-1501-001F
 The bag packaging is marked with "RoHS Compliant" label or equivalent markings.
 Parts can be wave soldered, dip soldered or hand soldered using typical lead-free soldering process with max 260°C temp. for 5 sec.

THIS DRAWING AND THE CONTENTS HEREIN ARE CONFIDENTIAL AND THE SOLE PROPERTY OF DIALIGHT. REPRODUCTION OF THIS DRAWING OR CONSTRUCTION OF ANY PARTS WITHIN THIS DRAWING ARE FORBIDDEN WITHOUT THE WRITTEN CONSENT OF DIALIGHT.

| | | |
|---|---|---|
| SCALE: DRAWING SCALE ALL DIM'S IN: INCHES (MM) | DRAWING NUMBER C-17286 | REV C |
| TOLERANCES: UNLESS OTHERWISE SPECIFIED FRACTIONS: ±1/64 DECIMALS (.XX): ±.01 DECIMALS (.XXX): ±.005 | TITLE 3MM LED PMI, SNAP-IN RoHS COMPLIANT | MATERIAL |
| ANGLES: ±1° | FINISH: | Dialight 1501 ROUTE 34 SOUTH FARMINGDALE, NJ 07727 |
| FSCM 83330 | SHEET 1 OF 1 | FAMILY TABLE: |