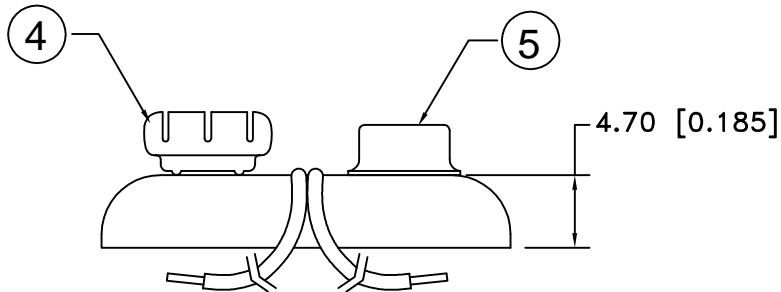
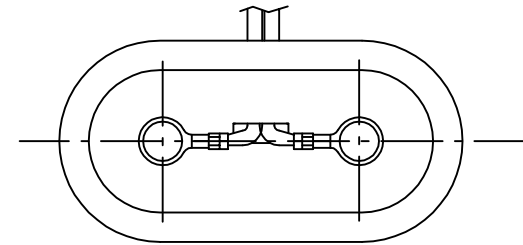


| Date | SYM | REVISION RECORD | AUTH | DR. | CK. |
|---------|-----|------------------------|------|------|-----|
| 5/26/07 | A | ADDED "ROHS COMPLIANT" | T.B. | B.S. | |
| | | | | | |
| | | | | | |
| | | | | | |



NOTES:

1. T STYLE 2 PCS. MOLDED CASE CONSTRUCTION WITH CRIMP CONNECTIONS. CRIMP ON WIRE INSULATION AND ON WIRE PROVIDES STRAIN RELIEF THAT STANDARD SOLDERED SNAPS DO NOT HAVE.
2. ROHS COMPLIANT

| NO. | PART NAME | MATERIAL | QTY. | Tolerance (Except as noted) | Memory Protection Devices, Inc 200 Broad Hollow Road, Farmingdale, New York 11735 | |
|-----|---------------|--|------|--------------------------------|--|--|
| 1 | MOLDED CASE | 2 PCS., POLYETHYLENE, WHITE WITH BLUE INSERT | 1 | decimal ±.5 (.020) | Scale | Drawn By B.S. |
| 2 | BLACK WIRE(-) | 24 AWG OR 26 AWG, UL-1007, CSA TR-64, 300V, 80°C | 1 | | | Approved By T.B. |
| 3 | RED WIRE (+) | 24 AWG OR 26 AWG, UL-1007, CSA TR-64, 300V, 80°C | 1 | Fractional ± .8 (.030) | Title | 9 VOLT BATTERY SNAP-T STYLE-12" WIRE LEADS, MOLDED CASE |
| 4 | FEMALE SNAP | BRASS, NICKLE PLATED | 1 | | | |
| 5 | MALE SNAP | BRASS NICKLE PLATED | 1 | | | |
| | | | | Angular ± 3° | Date 5/26/07 | Drawing Number BS12T-MC |