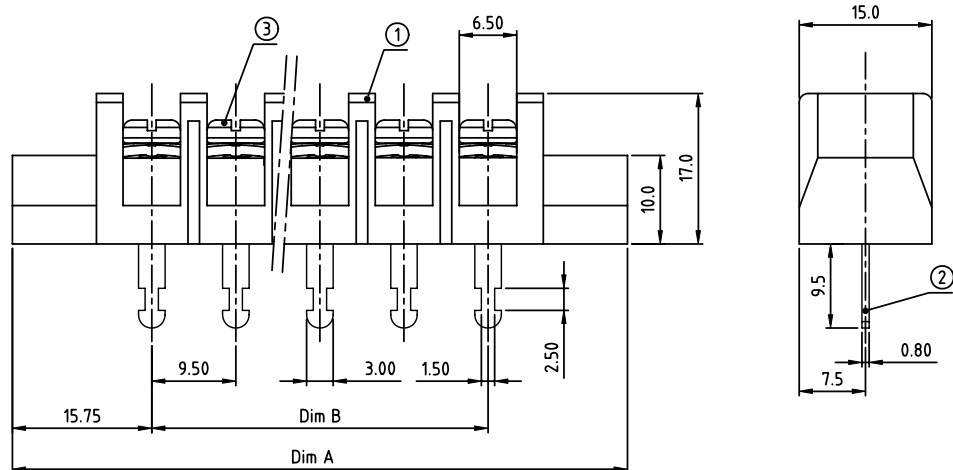
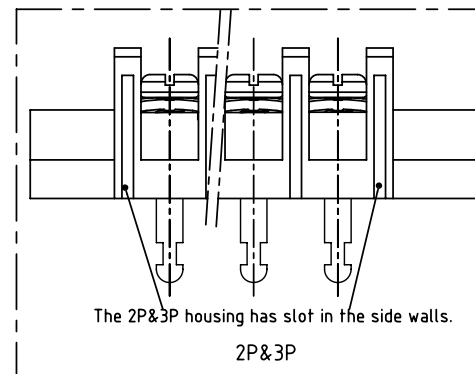
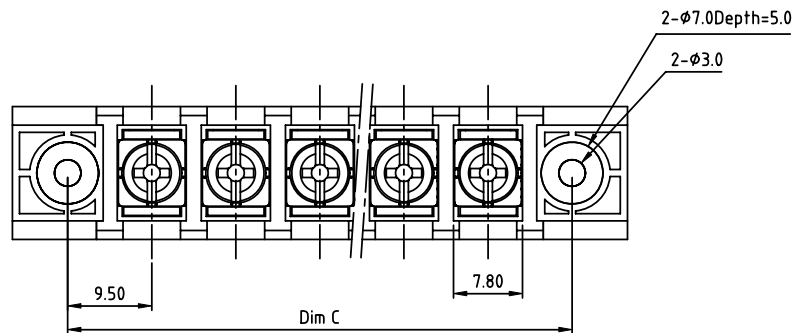


PRODUCT NUMBER	PITCH
YK506xx3x0JOG	9.50 mm



MATERIALS & ELECTRICAL

RATED VOLTAGE & CURRENT: 300 V, 20 A

WITHSTAND VOLTAGE: AC 2000 V/Min

INSULATION RESISTANCE: 1000 M Ω OR MORE AT DC 500 V

OPERATING TEMPERATURE RANG: -40 °C ~ +115 °C

SCREW TORQUE VALUE: 12 Lb-in.

WIRE RANGE: 22 - 12AWG

1) HOUSING: THERMOPLASTIC, UL 94 V-0 BLACK

2) TERMINAL: BRASS, 0.8t

3) TERMINAL SCREWS: STEEL, M3.5

APPROVAL: US

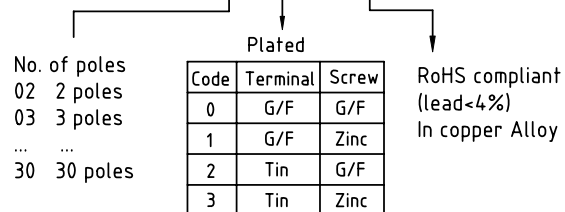
DIMENSION

Dim A	(N+2) \times 9.5+3.0
Dim B	(N-1) \times 9.5
Dim C	(N+1) \times 9.5

N=Number of poles

Poles	Tolerance
2p-4p	\pm 0.20
5p-10p	\pm 0.30
11p-24p	\pm 0.40
25p-30p	\pm 0.60

PART NO.: YK 506xx 3 x 0 JOG



mat'l. code		surface ASME Y14.5	tolerance ASME Y14.5	projection 	product family TERMINAL BLOCK
ltr	ecn no	dr	date	tolerances unless otherwise specified	title TERMINAL BLOCK
				angles ϕ ϕ	BARRIER TYPE, WITH FLANGE
				X \pm 1°	scale
				dr EVAN LU 061414	dwg no YK506xx3x0JOG
				enr EVAN LU 061414	sheet 1 of 1
				chr HANKE FENG 061414	size A4
				appd SHI JUN 061414	type CUSTOMER Drawing
sheet index	revision sheet	A	1		