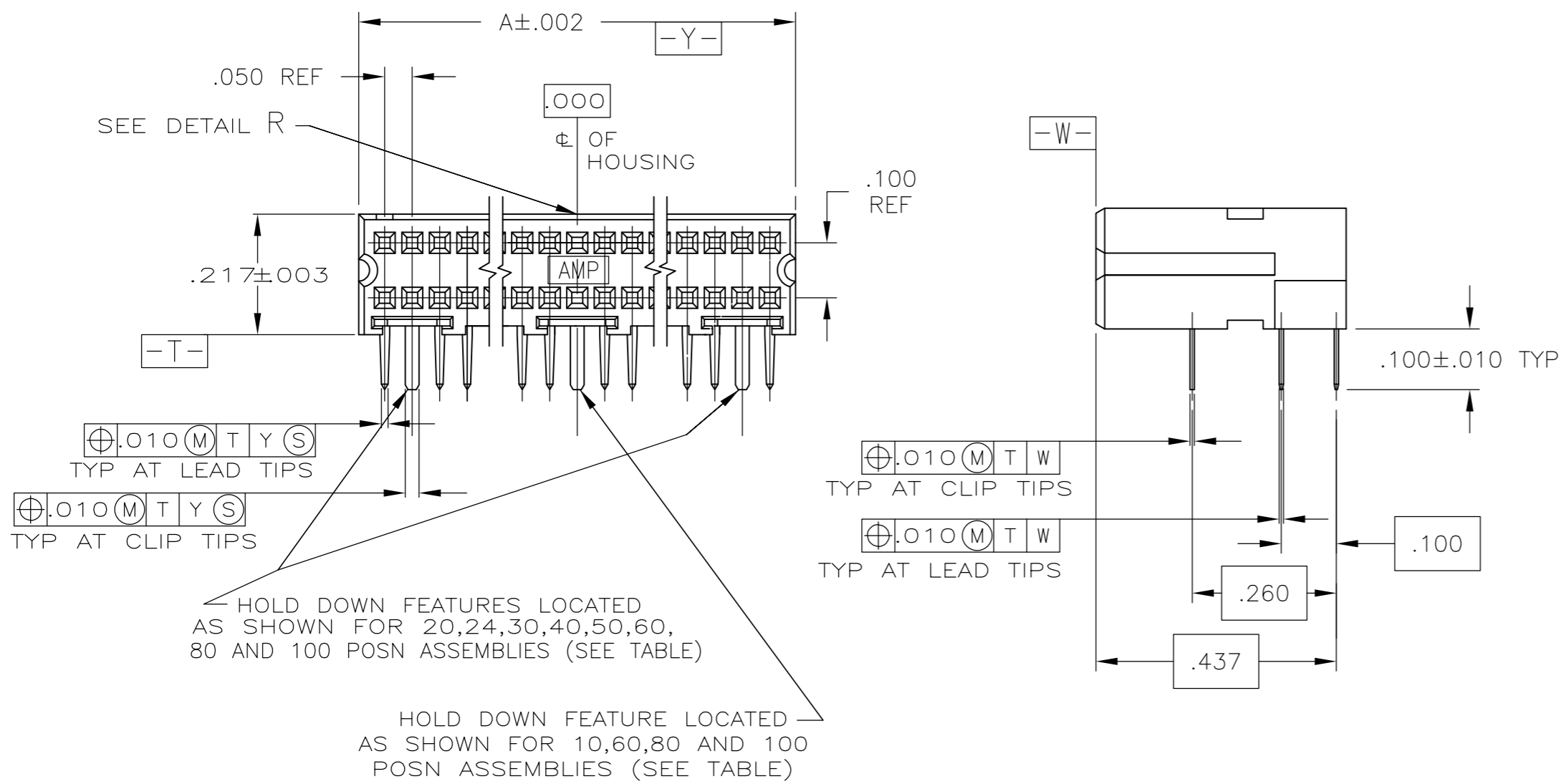
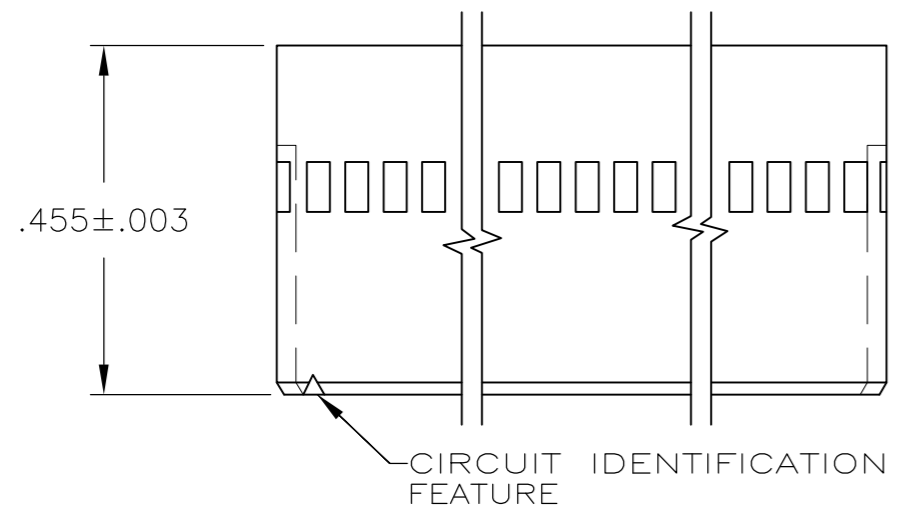
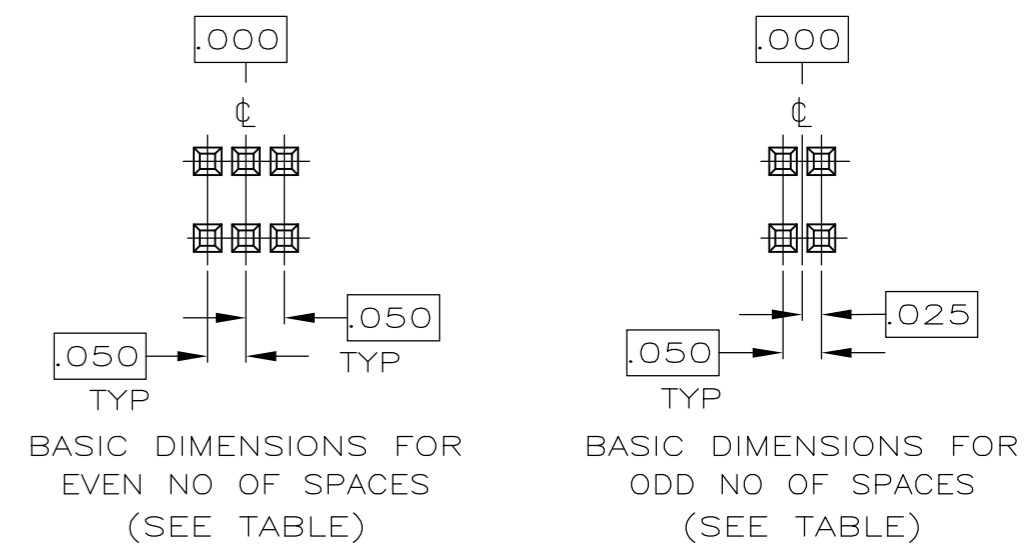


THIS DRAWING IS UNPUBLISHED. RELEASED FOR PUBLICATION
 © COPYRIGHT - By - ALL RIGHTS RESERVED.

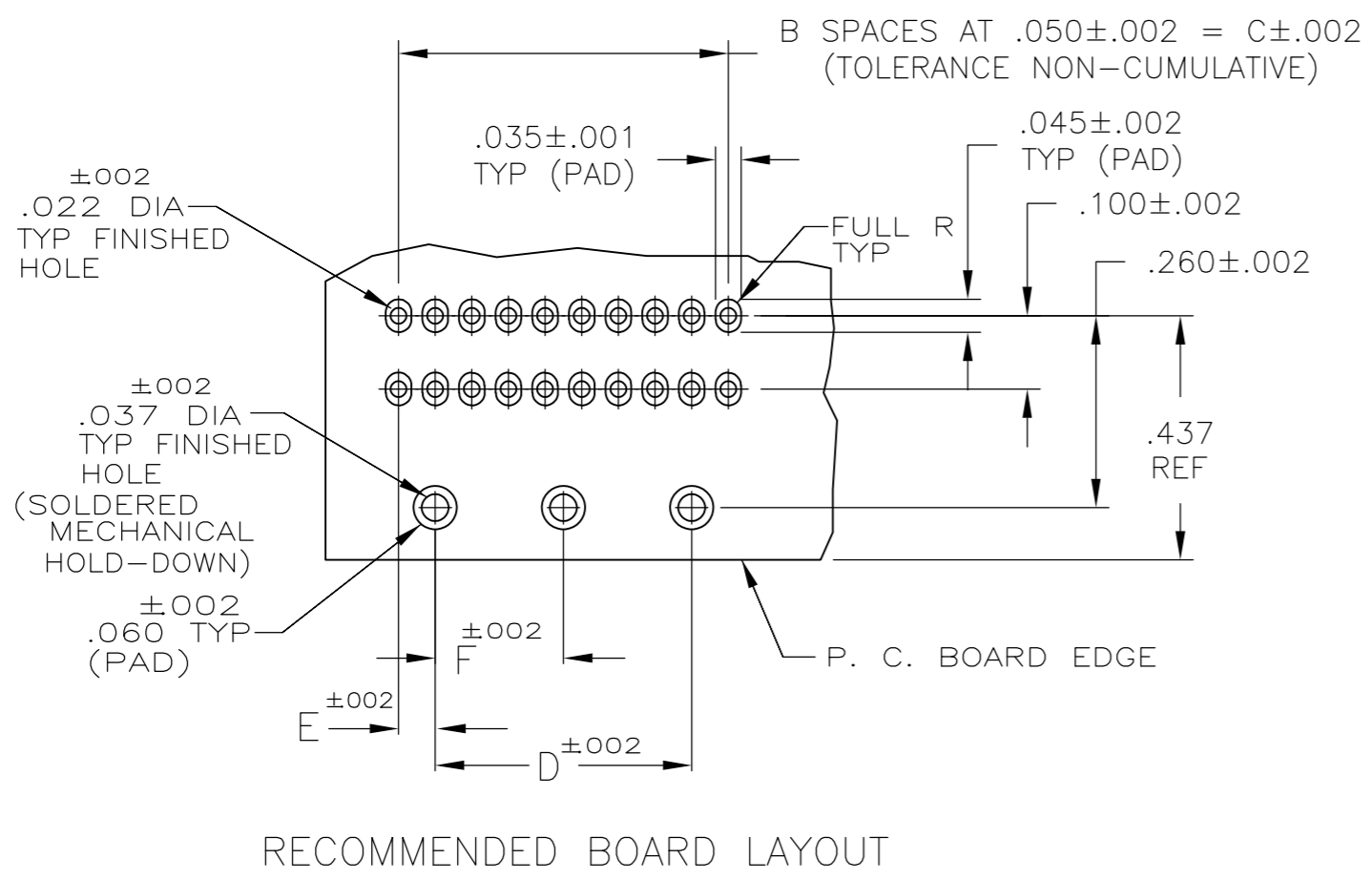
LOC	DIST	REVISIONS					
		P	LTR	DESCRIPTION	DATE	DWN	APVD
AD	39	L2		REVISED PER ECO-11-004820	11MAR11	RK	HMR



- 1 CONTACT AREA PLATED WITH .000030 GOLD; SOLDER CLIPS AND LEADS PLATED WITH .000150 TIN-LEAD; ALL OVER .000050 NICKEL
- 2 POINT OF MEASUREMENT FOR GOLD THICKNESS IS .030 FROM MATING END OF CONTACT
- 3 HOUSING: THERMOPLASTIC, COLOR-BLACK. CONTACT: COPPER ALLOY. SOLDER CLIP: PHOSPHOR BRONZE
- 4 CONTACT AREA PLATED WITH .000030 GOLD; SOLDER CLIPS AND LEADS PLATED WITH .000150 TIN ALL OVER .000050 NICKEL
- 5 PRELIMINARY - NOT FOR PRODUCTION
- 6 ROHS 2002/95/EC COMPLIANT
- 7 OBSOLETE PARTS: OBSOLETE CIS STREAMLINING PER D.RENAUD/D.SINISI



FINISH	F	E	D	C	B	A	NO OF POSN	PART NUMBER
	1.175	.050	.450	.550	11	.644	24	5-103911-9
-.925	.050	.600	.700	14	.794	30	5-103911-8	
-.675	.050	.850	.950	19	1.044	40	5-103911-7	
-.437	.050	1.100	1.200	24	1.294	50	5-103911-6	
-.260	.050	1.350	1.450	29	1.544	60	5-103911-5	
-.100	.050	.350	.450	9	.544	20	5-103911-4	
-.050	.100	-.200	.200	4	.294	10	5-103911-3	
1.175	.050	.450	.550	11	.644	24	103911-9	
-.925	.050	.600	.700	14	.794	30	103911-8	
-.675	.050	.850	.950	19	1.044	40	103911-7	
-.437	.050	1.100	1.200	24	1.294	50	103911-6	
-.260	.050	1.350	1.450	29	1.544	60	103911-5	
-.100	.050	.350	.450	9	.544	20	103911-4	
-.050	.100	-.200	.200	4	.294	10	103911-3	



THIS DRAWING IS A CONTROLLED DOCUMENT.

DWN D CLOUSER 3-20-86
 CHK J S STARON 3-20-86
 APVD J S STARON 3-20-86

DIMENSIONS: INCHES
 TOLERANCES UNLESS OTHERWISE SPECIFIED:
 0 PLC ± -
 1 PLC ± -
 2 PLC ± -
 3 PLC ± -
 4 PLC ± -
 ANGLES ± -
 FINISH SEE TABLE

PRODUCT SPEC 108-1093
 APPLICATION SPEC 114-25031
 WEIGHT -

NAME RECEPTACLE ASSEMBLY, RIGHT ANGLE, AMPMODU System 50
 SIZE A2 CAGE CODE 00779 DRAWING NO C-103911 RESTRICTED TO -
 SCALE 4:1 SHEET 1 OF 1 REV L2

TE Connectivity