

AWSP60-5

Description:

The AWSP60-5 is a single output power supply. This power supply is designed for a wide variety of applications where high reliability is desired, including applications for the industrial and telecommunications markets. Excellent performance specifications are provided, together with compliance to European EMC (EN55022, Class B and EN61000-3-2), and Low Voltage directive (TUV EN60950).

Specifications (@25C)

Input Characteristics:

| | |
|------------------------|--------------------------------------|
| Input Voltage: | 85-264Vac |
| Input Frequency Range: | 47-63Hz |
| Max Input Current: | 1.3A @ Vin (rated) |
| Max Inrush Current: | 20A@110Vac, 40A@220Vac at cold start |
| Leakage Current: | <3.5mA/240Vac |

Output Characteristics:

| | |
|---------------------------|--|
| Output Voltage: | 5Vdc |
| Output Current: | 12.0A |
| Output Power: | 60W |
| Adjustable Output Range: | ±10% |
| Ripple & Noise: | 75mV |
| Load Regulation: | ±1.0% |
| Line Regulation: | ±0.5% |
| Efficiency: | 73% |
| Temperature Drift: | <0.03%/°C (10-50°C) |
| Start-up Time: | 300ms max @ 230Vac |
| Hold-up Time: | 20ms min, 100% Load@230Vac |
| Rise-up Time: | 300ms max, 100% Load@230Vac |
| Over Current Protection: | At Load>120% 115/230Vac, Shutdown |
| Over Voltage Protection: | Zener clamping at Vo>110%, Non auto recovery |
| Short Circuit Protection: | Short circuit protection available. Avoid short circuit >30 sec. |

General Specifications:

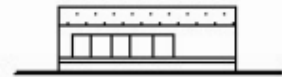
| | |
|-----------------------|--|
| Switching Frequency: | 45kHz |
| Dimension (LxWxH): | 160x98x38mm |
| Weight: | 450g net, 490g gross |
| Cooling: | Natural Convection |
| Isolation Resistance: | I/P—O/P, I/P—FG, O/P—FG: 500VDC/100Mohms |
| Dielectric Strength: | I/P—O/P: 3KVac; I/P—FG: 2.5KVac; O/P—FG: 0.5KVac 1 min |
| Warranty: | 2 years |

Environmental Specifications:

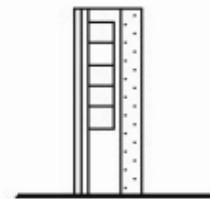
| | |
|------------------------|---|
| Operating Temperature: | -10° to 60°C |
| Operating Humidity: | 20 to 90% RH, non-condensing |
| Storage Temperature: | -25 to 75°C |
| Storage Humidity: | 10 to 95% RH, non-condensing |
| Vibration: | 10-55Hz, 2G 1min/cycle, period of 60min, each X, Y & Z axis |

EMC & Safety Specifications:

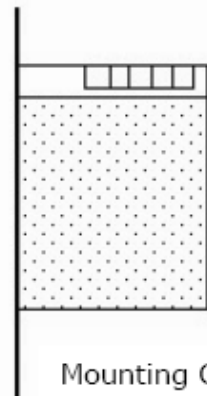
| | |
|--------------------------|--|
| EMC Emissions: | Conforms to EN55022, VCCI, CISPR22 Class B (Conducted & Radiated); IEC-61000-4-2, 61000-4-4, 61000-4-5, 61000-4-11 |
| ESD Susceptibility: | EN61000-4-2 (15kV/8kV) |
| Radiated Susceptibility: | EN61000-4-3 (3V/m ¹) |
| Fast Burst: | EN61000-4-4 (2kV) |
| Surge: | EN61000-4-5 (1kV/2kV) |
| Safety Approval: | UL 60950 (UL File No: E204980) TUV EN60950 (TUV No: 50058679) |



Mounting A



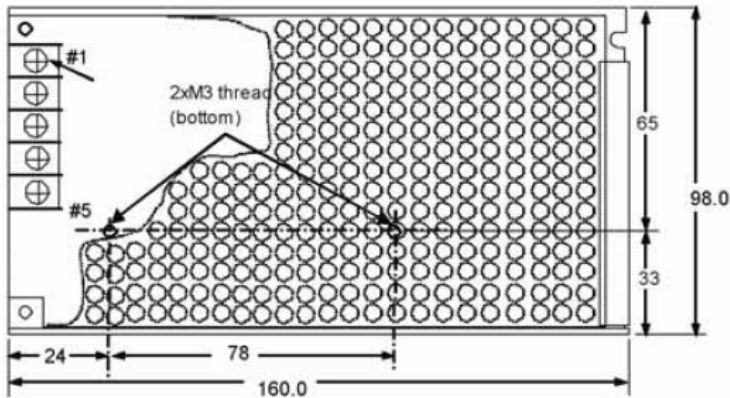
Mounting B



Mounting C

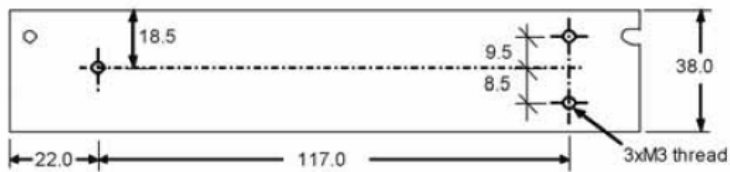


Outline Dimensions (mm):



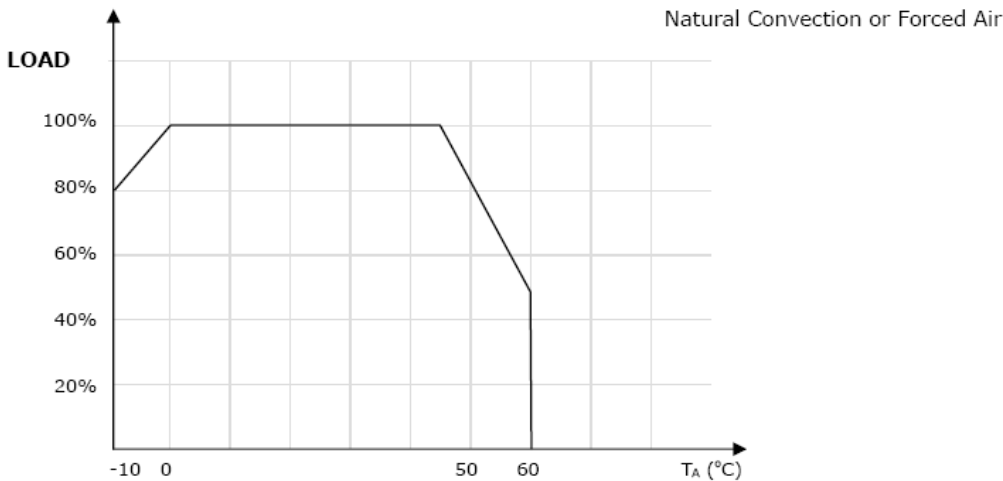
TERMINAL SCREW ASSIGNMENT

- # 1,2 : AC INPUT
- # 3 : FG (FRAME GROUND)
- # 4 : DC OUTPUT -V
- # 5 : DC OUTPUT +V



Unit : mm
Tolerance : +/-1.0mm

Derating Curve:



Connector Types:

Input: Screw Terminals
Output: Screw Terminals

RoHS Compliance: As of manufacturing date February 2005, all standard products meet the requirements of 2011/65/EU, known as the RoHS initiative.

* Upon printing, this document is considered "uncontrolled". Please contact Triad Magnetics' website for the most current version.