

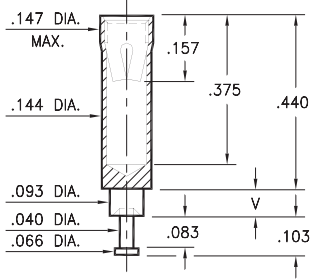
PIN RECEPTACLES

FOR .065" - .082" DIAMETER PINS

0395

0395-X-15-XX-07-XX-10-0

Swage mount in .096 hole

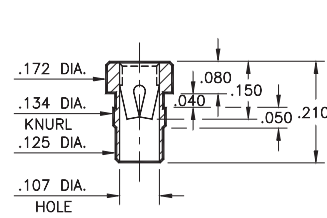


| Basic Part Number | Board Thickness | Length V |
|-------------------|-----------------|----------|
| 0395-1 | .031 | .062 |
| 0395-2 | .062 | .094 |
| 0395-3 | .094 | .125 |
| 0395-4 | .125 | .156 |
| 0395-5 | .188 | .219 |

8016

8016-0-15-XX-07-XX-10-0

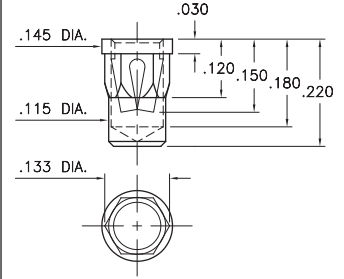
Press-fit in .131 mounting hole



0350

0350-0-15-XX-07-XX-10-0

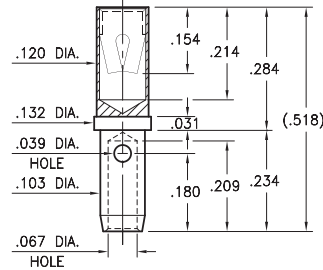
Hex press-fit in .129±.002 plated through-hole



0714

0714-0-33-XX-07-XX-10-0

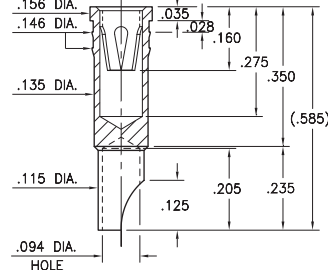
Wire crimp termination. Accepts wire sizes 14 AWG Max. / 16 AWG Min.



0778

0778-0-18-XX-07-XX-10-0

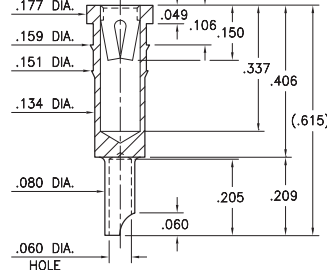
Press-fit in .143 mounting hole
Accepts wire sizes up to 14 AWG



9177

9177-0-18-XX-07-XX-10-0

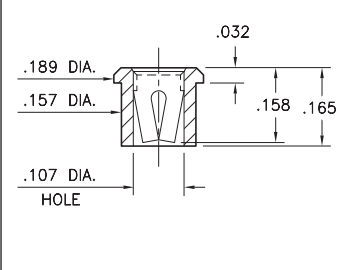
Press-fit in .151 mounting hole
Accepts wire sizes up to 16 AWG



5391

5391-0-15-XX-07-XX-10-0

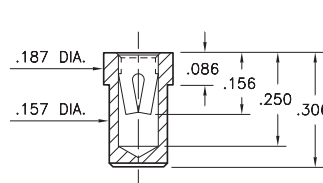
Solder mount in .159 min. mounting hole



8837

8837-0-15-XX-14-XX-10-0

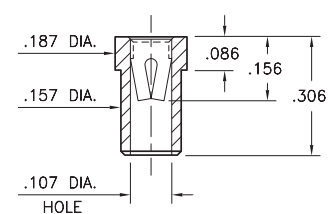
Solder mount in .159 min. mounting hole



9837

9837-0-15-XX-14-XX-10-0

Solder mount in .159 min. mounting hole



SPECIFICATIONS:

Shell Material: Brass Alloy 360, 1/2 Hard

Contact Material: Beryllium Copper Alloy 172, HT

Dimensions: Inches

Tolerances On: Lengths: ±.005

Diameters: ±.002

Angles: ± 2°



ORDER CODE: XXXX - X - XX - XX - XX - XX - 10 - 0

BASIC PART #

SPECIFY SHELL FINISH:

01 200 μ" TIN/LEAD OVER NICKEL

◆ 80 200 μ" TIN OVER NICKEL (RoHS)

◆ 15 10 μ" GOLD OVER NICKEL (RoHS)

SPECIFY CONTACT FINISH:

01 200 μ" TIN/LEAD OVER NICKEL

◆ 80 200 μ" TIN OVER NICKEL (RoHS)

◆ 27 30 μ" GOLD OVER NICKEL (RoHS)

SELECT CONTACT:

#07 or #14 CONTACT (DATA ON PAGE 261)

(For alternate contact choices, see group H on page 248)

