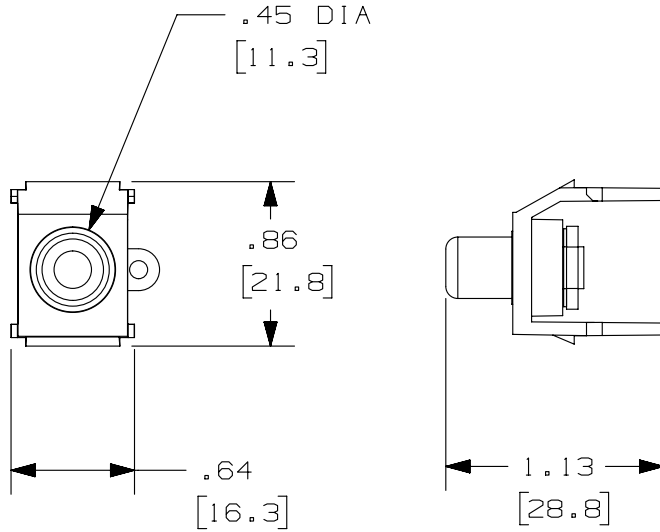


THIS COPY IS PROVIDED ON A RESTRICTED BASIS AND IS NOT TO BE USED IN ANY WAY DETRIMENTAL TO THE INTERESTS OF PANDUIT CORP.

| PANDUIT P/N | WEIGHT |
|-------------|--------------------------------|
| NKRSMB**Y | .16 LB/10 PCS (75 g/10 PCS) |
| NKRSMR**Y | |
| NKRSMW**Y | |
| NKRSMY**Y | |



NOTES:

- SEE CURRENT CATALOG FOR ADDITIONAL PART SUFFIXES TO INDICATE COLOR AND OR PACKAGE QUANTITY.
- DIMENSIONS IN [] ARE IN METRIC.
- PART INCLUDES:
 - 1- MODULE BASE
 - 1- RCA CONNECTOR
 - 1- GROUNDING RING
 - 1- HEX NUT



| | | | |
|-------------|-----------|-----------------------|-----|
| PART NUMBER | SEE TABLE | PRODUCT SPEC/PKG SPEC | N/A |
| I.I. NUMBER | N/A | WORK INSTRUCTION | N/A |

| | |
|-------------------------------|--|
| TITLE | |
| NETKEY RCA SOLDER TYPE MODULE | |
| CUSTOMER DRAWING | |

| | | |
|--------------------|--------------------|----------------|
| ITEM REVISION NAME | M02479PD/00 | PANDUIT |
| DATASET FILE NAME | M02479PD_DC367/00B | |

| | | | |
|---|----------------------|------------------------------|-----|
| UNLESS OTHERWISE SPECIFIED, DIMENSIONAL TOLERANCES ARE: IN [mm] | | MATERIAL: | ABS |
| .x ± .1 [2.54] | .xxx ± .005 [.127] | DRAWING NUMBER: 02479-367 | |
| .xx ± .01 [.25] | ANGLES ± 5 ° | | |
| | | THIRD ANGLE PROJECTION | |

| REV | DATE | BY | CHK | APR | DESCRIPTION | ECN |
|-----|---------|-----|-----|-----|------------------------------------|-----------|
| 1 | 12-2-13 | BJN | JSP | JCK | A. REMOVED LOCK WASHER FROM MODULE | 02479-367 |
| R | 8-9-06 | JSP | MJD | MJD | RELEASED TO PRODUCTION | 02479-367 |

| | | | | | |
|----------|--------|-----|-------|------------|------|
| DRAWN BY | DATE | CHK | SCALE | SHT 1 OF 1 | SIZE |
| JSP | 8-9-06 | MJD | NONE | | A |

D10100DA/14