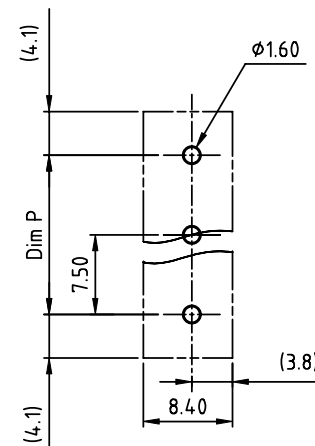
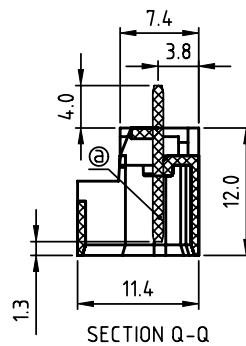
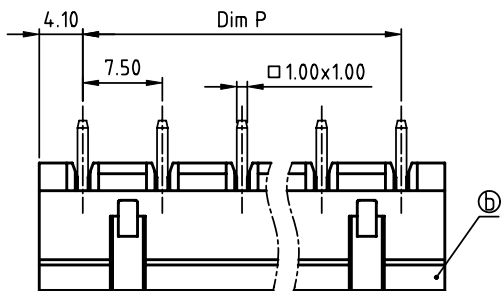
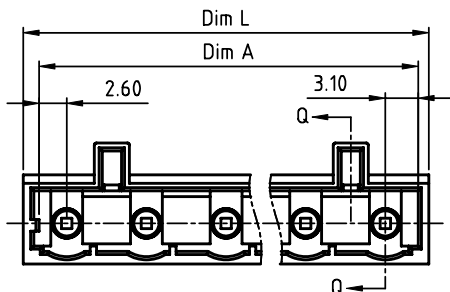


PRODUCT NUMBER	PITCH
NCxxA2x000J0G	7.50 mm



RECOMMENDED P.C.B LAYOUT
TOP VIEW



Material:

- Item①Male contact pin: Copper Tin plated
- Item②Terminal(housing): Thermoplastic (UL94V-0)

- Electrical: cULus
- Voltage rating: 300V
 - Current rating: 8A
 - Withstanding Voltage: 1.6 KV
 - Operating temperature: -40°C to +115°C
 - Soldering temperature: 260°C±5°C/5 Sec
 - Safety Approval: cULus

N=Number of poles
 Dim L=Nx7.5+0.7
 Dim P=(N-1)x7.5
 Dim A=(N-1)x7.5+5.7

poles	Dim L	Dim P	Dim A
2-6p	±0.20	±0.20	±0.20
7-12p	±0.25	±0.25	±0.25
13-16p	±0.40	±0.30	±0.30

PART NO.: NC xx A 2 x 0 00J 0 G

- | | | | |
|--------------|---|-------------------|--|
| Solid block | 0 | Black (RAL9005) | RoHS compliant
(lead<4%)
In copper Alloy |
| No. of poles | 2 | Red (RAL3001/D) | |
| 02 2 poles | 3 | Orange(RAL2011/P) | |
| 03 3 poles | 4 | Yellow(RAL1018/A) | |
| ... | 5 | Green(RAL6018/T) | |
| 16 16 poles | 6 | Blue (RAL5015/A) | |
| | 8 | Grey(RAL7035/D) | |
| | 9 | White(RAL1102) | |
| | C | Green(RAL6018/U) | |

mat'l. code		surface ASME Y14.5	tolerance ASME Y14.5	projection	product family TERMINAL BLOCK	
ltr ecn no dr date		tolerances unless otherwise specified		MM	title	
		angles	X.±0.5		TERMINAL BLOCK	
		X*±1°	X.X±0.3	scale	PLUGGABLE SOCKET,RIGHT ANGLE,W/HOOK HOLDER	
			X.XX±0.1	FCI	dwg no	
		dr	EVIN ZHONG 042314		sheet 1 of 1	size
		enrg	EVIN ZHONG 042314		NCxxA2x000J0G	A4
		chr	HANKE FENG 042314		type	CUSTOMER Drawing
		appd	SHI JUN 042314			
sheet index	revision sheet	A 1				