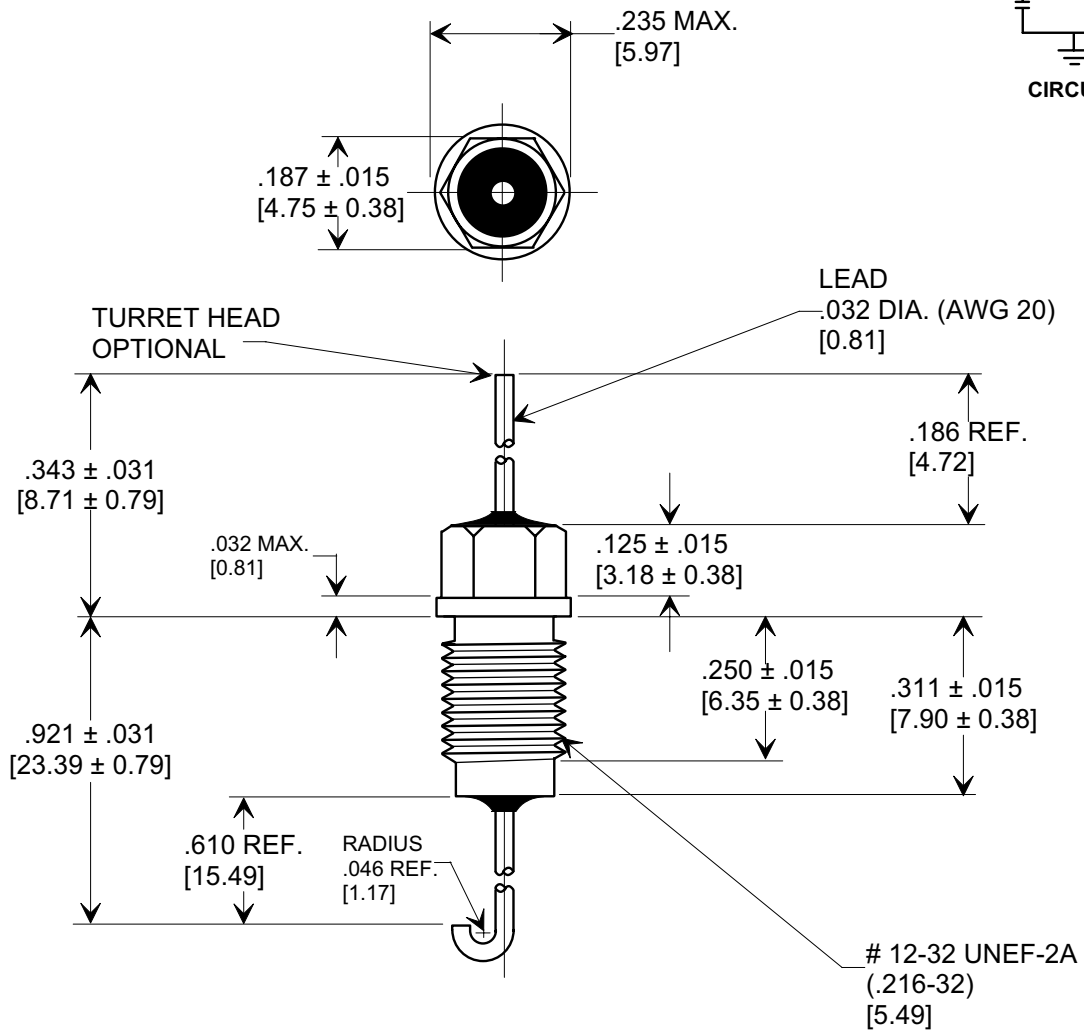
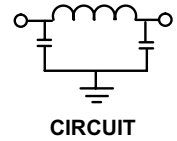
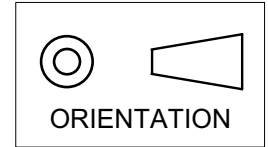


MARKETING SALES DRAWING
DIMENSIONS IN INCHES - DO NOT SCALE THIS DRAWING
DIMENSIONS IN METRIC - []

Electrical Testing
per Tusonix standard
test plans and Mil-Std-202
Test Methods.



MIN. CAP.	+ 125 °C WORKING VOLTAGE	I.R. MIN. @ 100 VDC	DWV	CURRENT	MINIMUM NO LOAD INSERTION LOSS (dB) AT 25°C PER MIL-STD-220				
					5 MHz	20 MHz	50 MHz	1 GHz	10 GHz
25,000 pF	100 VDC	10 GΩ	250 VDC	10 A	15	60	60	65	65

X-2015 Rev-0	REVISION RECORD				--TOLERANCES-- Unless Otherwise Specified	Title			
	Original Release C.O.	WAS SK 7096-003-S EC. 6-14-93	0	DWG. REVISED EC. 5-25-94		EMI FILTER MIL 15733/61-0012			
	930528-2	1	NAILHEAD RMVD. 5-1-96	2	DECIMAL ± $\frac{\quad}{\quad}$	Drawn	L.E. 06-03-02	Scale	3 X
	RDN TO COMPUTER FORMAT L.E. 06-03-02	3	REVISED DIM .610. S.M. 08-30-05	4	ANGLES ± $\frac{\quad}{\quad}$	Approved	T.C. 06-03-02		
20020528-3-05	TUSONIX TUCSON, ARIZONA		A	4253-501					