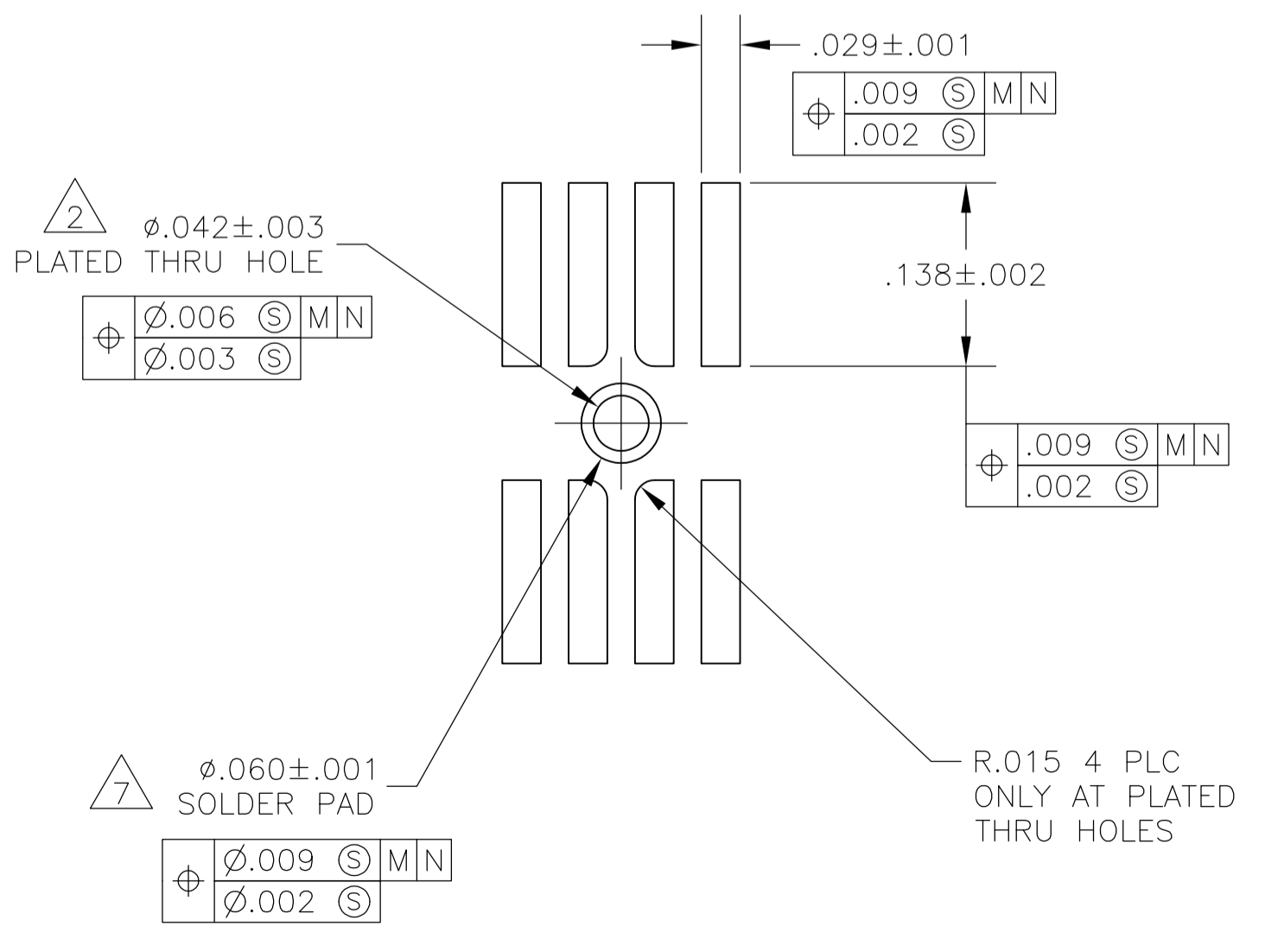
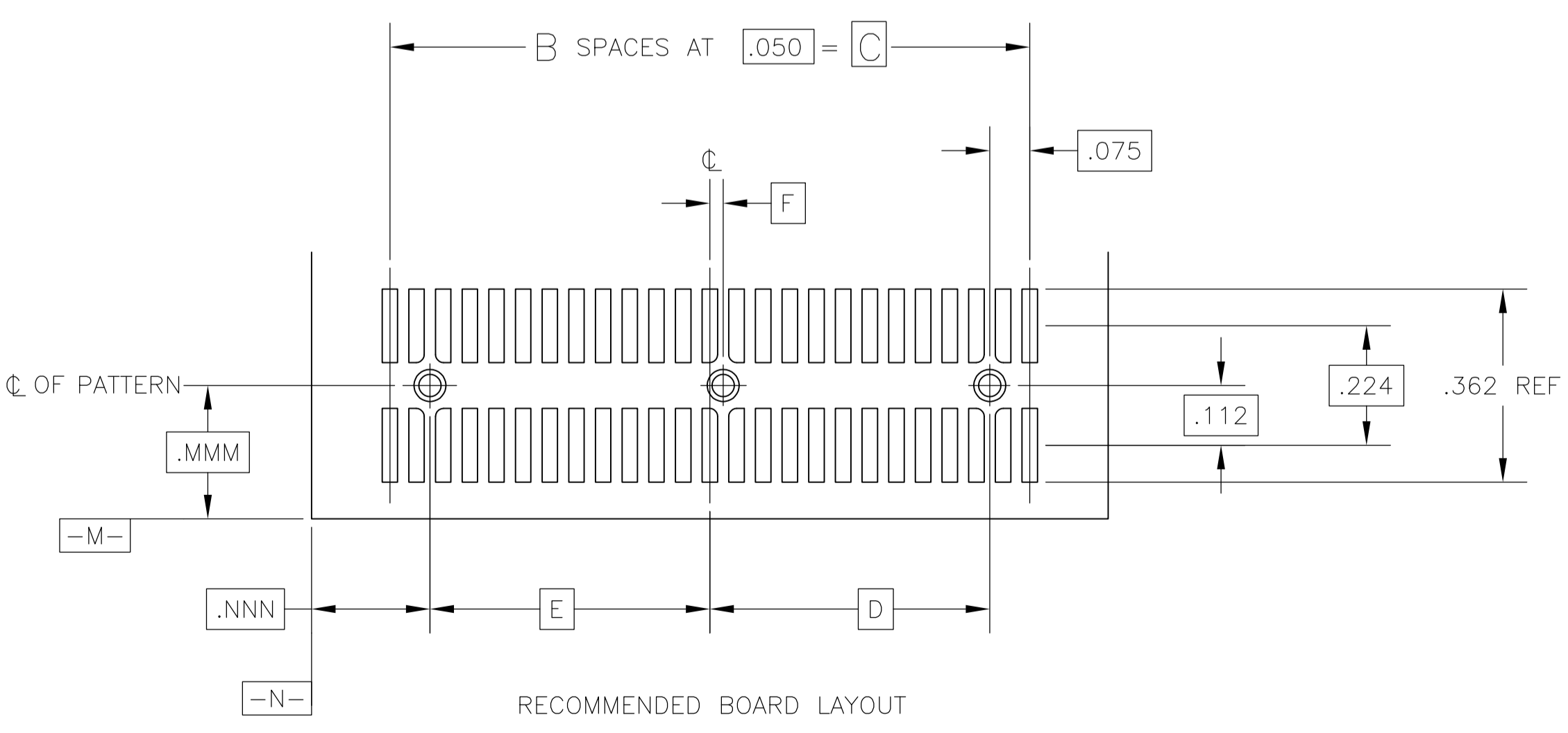
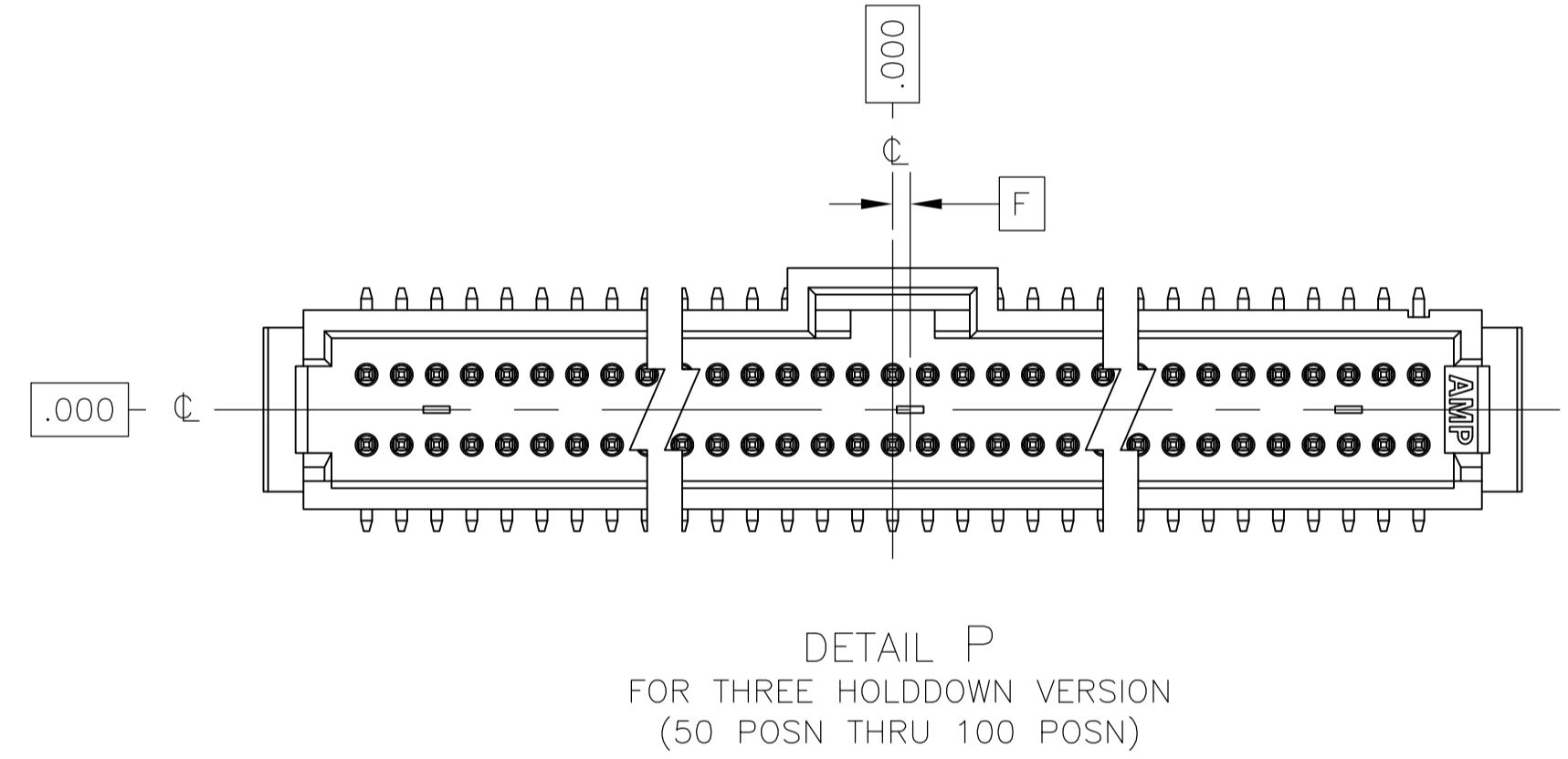
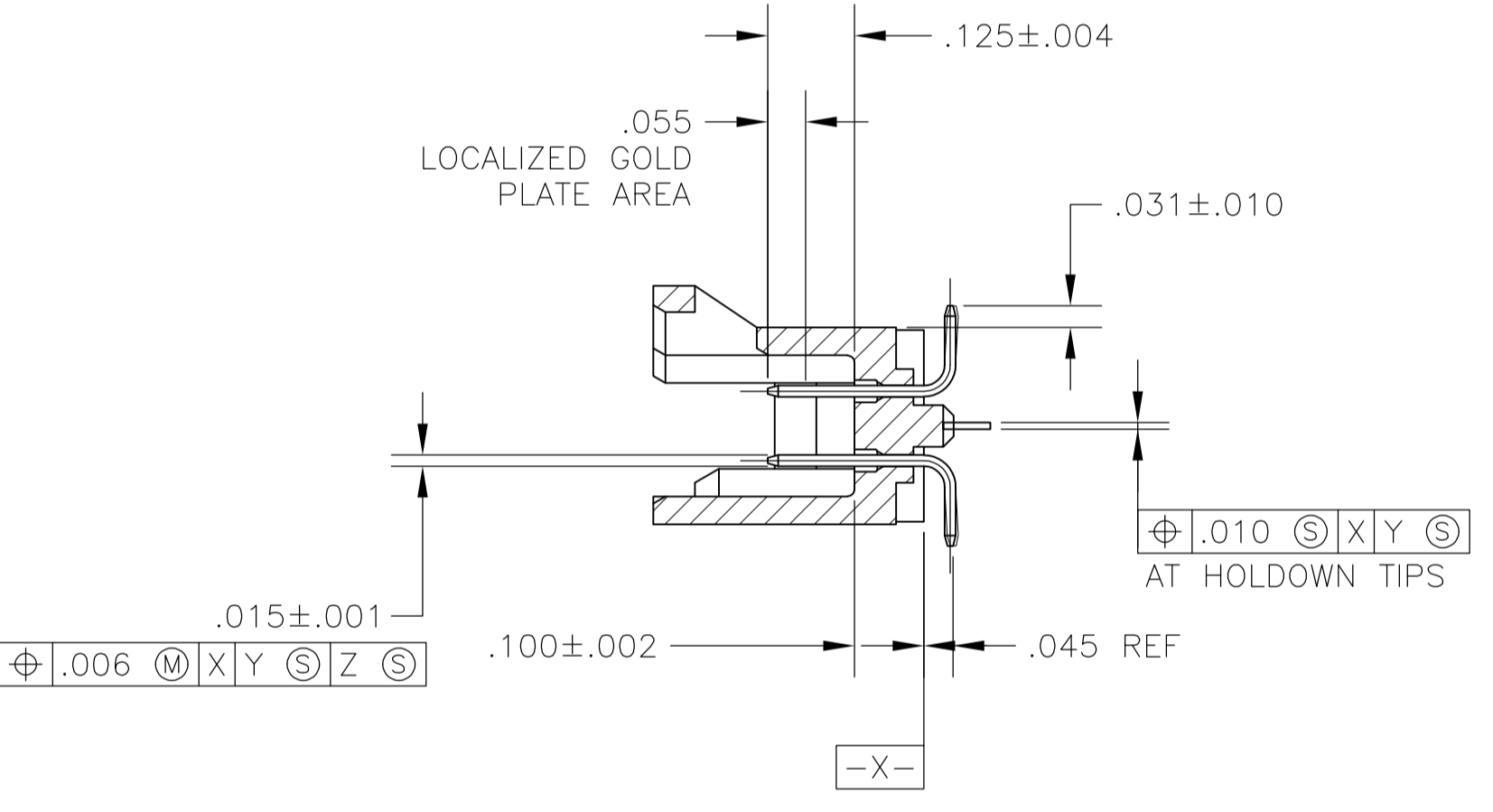
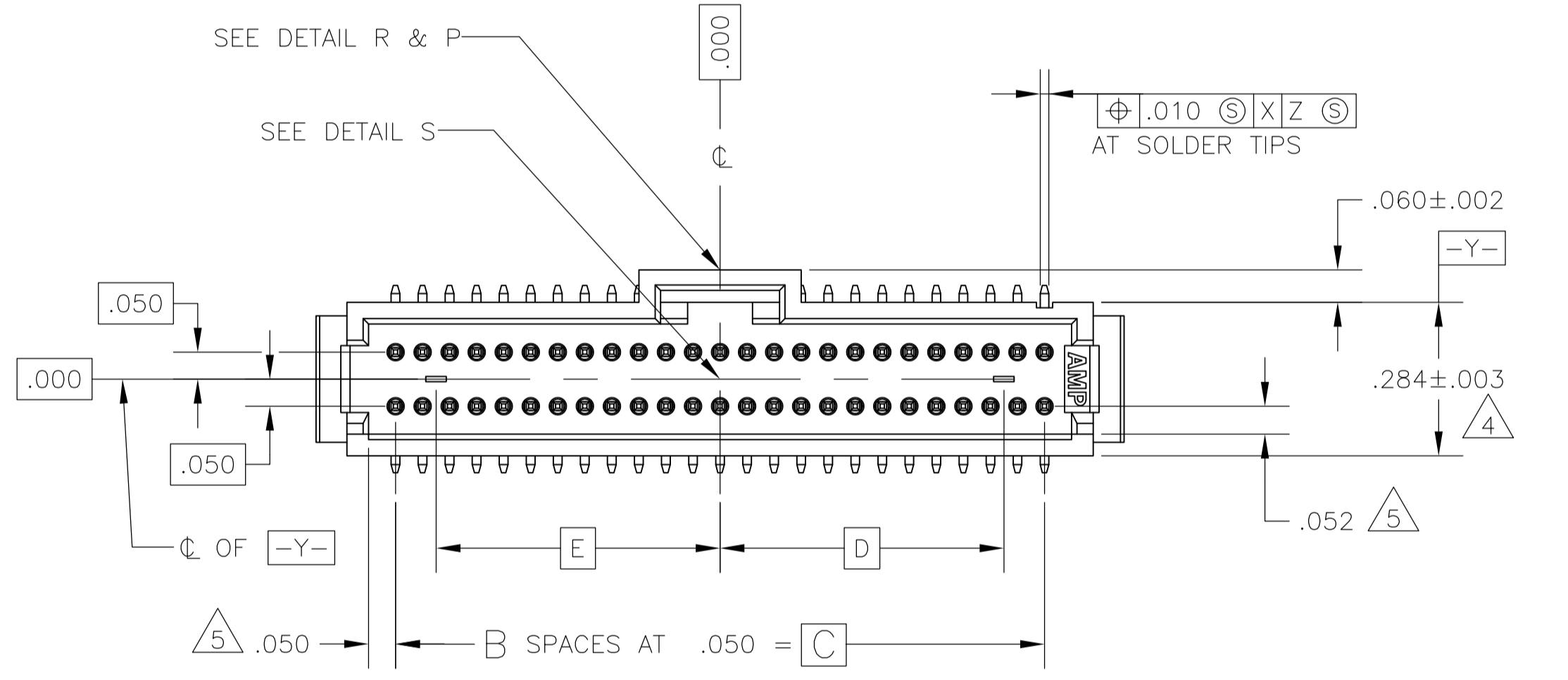
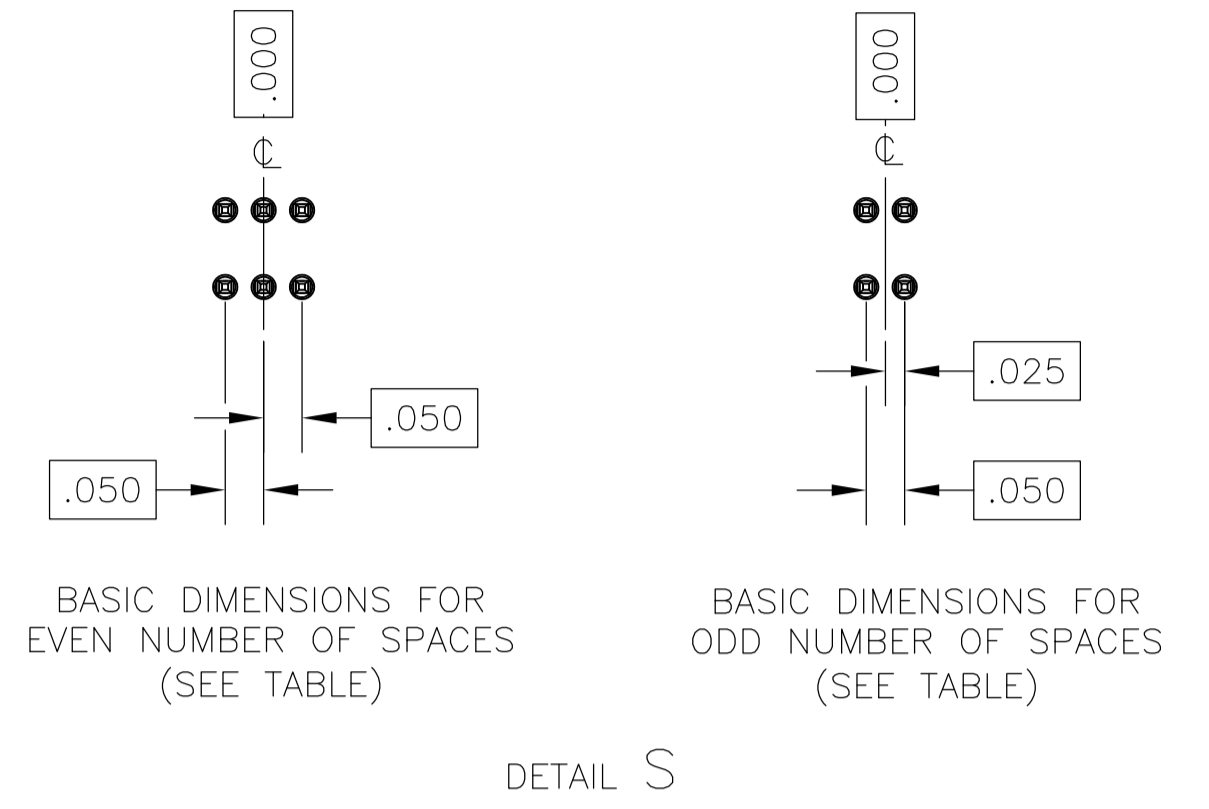
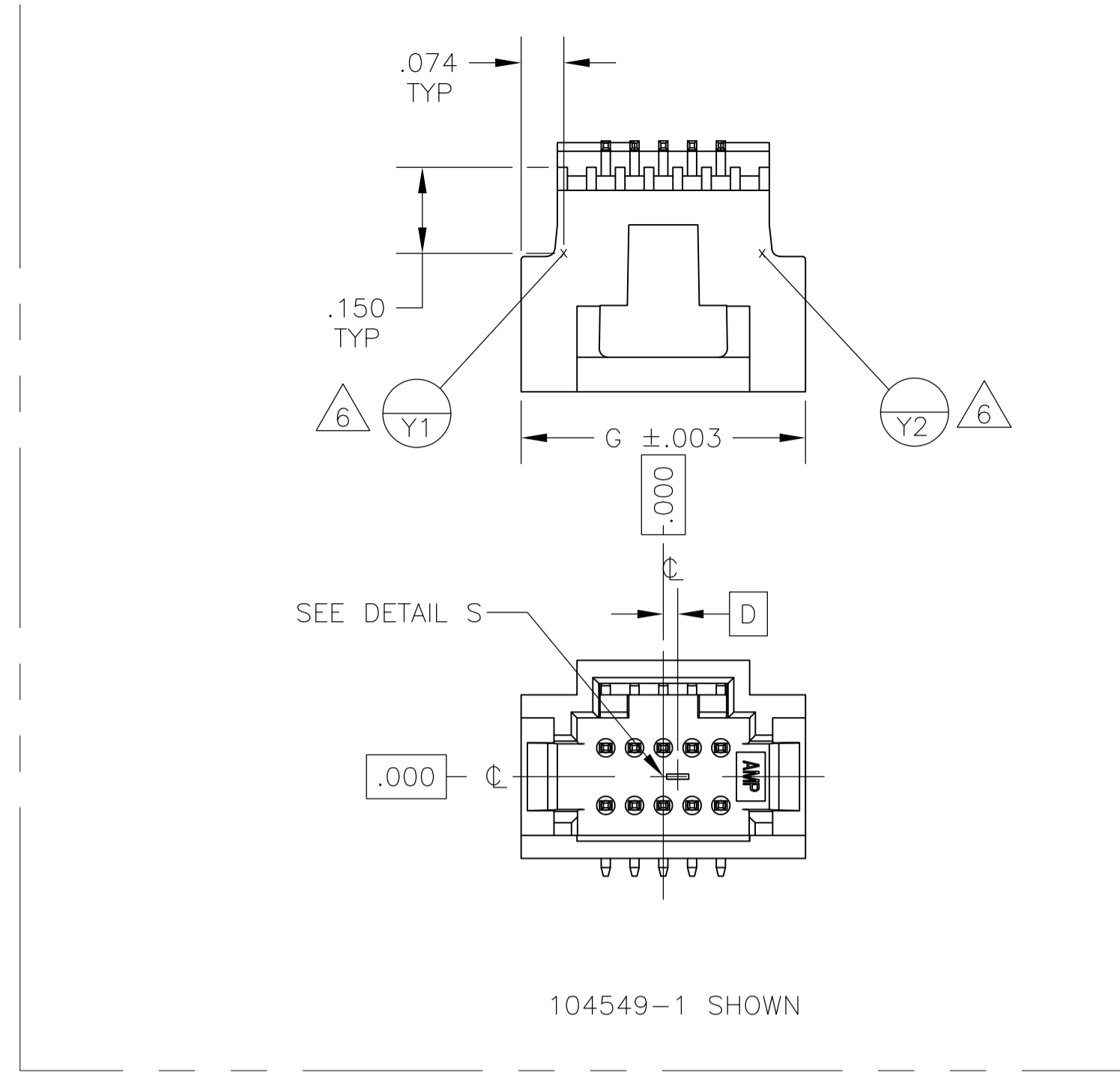
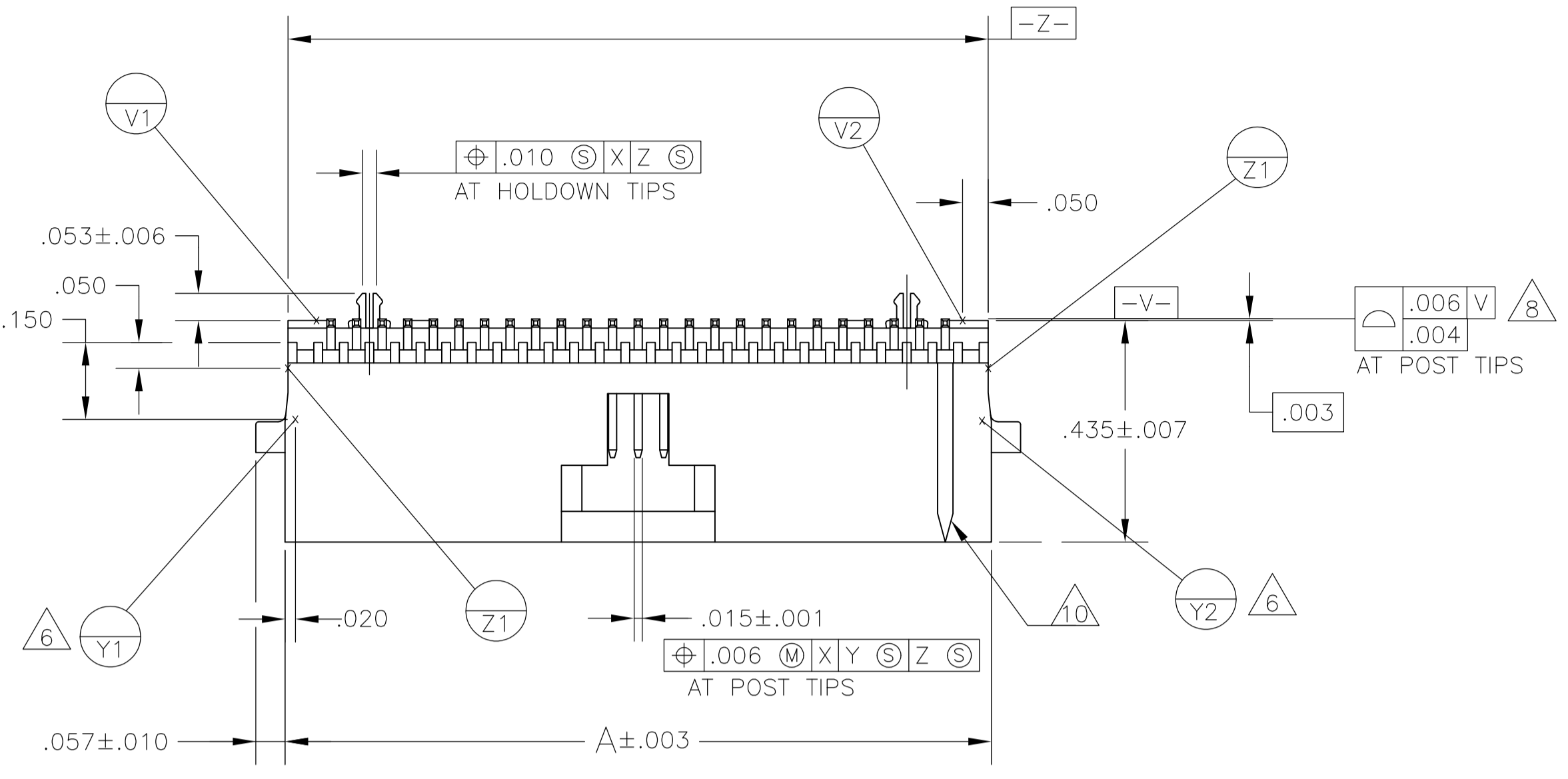






LOC		DIST		REVISIONS			
P	LTR	DESCRIPTION	DATE	DWN	APVD		
S2		REVISED PER ECO-11-020673	17OCT11	KH	JO		



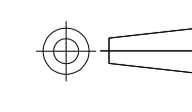

SEE SHEET 2 OF 2 FOR DASH NUMBERS AND NOTES

THIS DRAWING IS A CONTROLLED DOCUMENT.		DIN 13JUL92		R.K. SEIFRIED/UTA		TE Connectivity	
DIMENSIONS: INCHES		TOLERANCES UNLESS OTHERWISE SPECIFIED:		APVD B FLICKER		NAME	
0 PLC ± -		1 PLC ± -		2 PLC ± -		3 PLC ± -	
4 PLC ± .005		ANGLES ± -		APPLICATION SPEC		SIZE	
MATERIAL: HOUSING: PPA		FINISH: 1		WEIGHT		CUSTOMER DRAWING	
COLOR: BLACK		CONTACT: PHOSPHOR BRONZE		A1 00779 C=104549		SCALE 4:1 SHEET 1 OF 2 REV S2	

LOC	DIST	REVISIONS			
AD	00	REV	DATE	BY	APPV
-	-	1	SEE SHEET 1	-	-

- 1 .000030 GOLD IN LOCALIZED PLATE AREA, .000150 TIN-LEAD ON SOLDER TAILS ALL OVER .000050 NICKEL.
- 2 USE .0465±.0010 DRILLED HOLE (#56 DRILL) WITH .001 MIN COPPER.
- 3 CIRCUIT IDENTIFICATION FEATURE OMITTED ON 10 POSITION HEADER ASSEMBLIES.
- 4 DIMENSION APPLIES AT BASE OF SHROUD.
- 5 THE NOTED DIMENSIONS APPLY AT THE MATING FACE OF THE HOUSING.
- 6   ARE LOCATED THE SAME AS   EXCEPT ON OPPOSITE SIDE OF HOUSING.
- 7 PADS ON THE OPPOSITE SIDE OF THE BOARD TO BE Ø.065 MINIMUM.
- 8 REFER TO NO. OF POSN. IN CHART FOR NUMBER OF SURFACES THAT ARE TO BE COPLALAR.
- 9 .000030 GOLD IN LOCALIZED PLATE AREA, .000150 TIN ON SOLDER TAILS, ALL OVER .000050 NICKEL.
- 10 NO CIRCUIT IDENTIFICATION FEATURE ON 10,12,20,24 AND 30 POSITION PARTS.

-	-	.000	.250	5	.430	12	6-104549-1
.000	1.150	1.150	2.450	49	2.630	100	6-104549-0
.000	.900	.900	1.950	39	2.130	80	5-104549-9
.000	.650	.650	1.450	29	1.630	60	5-104549-8
.025	.525	.525	1.200	24	1.380	50	5-104549-7
-	.400	.400	.950	19	1.130	40	5-104549-6
-	.275	.275	.700	14	.880	30	5-104549-5
<del>OBSELETE</del>	<del>-.225</del>	<del>.225</del>	<del>.600</del>	<del>12</del>	<del>.780</del>	<del>26</del>	<del>5-104549-4</del>
-	.200	.200	.550	11	.730	24	5-104549-3
-	.150	.150	.450	9	.630	20	5-104549-2
.494	-	.025	.200	4	-	10	5-104549-1
-	-	.000	.250	5	.430	12	1-104549-1
.000	1.150	1.150	2.450	49	2.630	100	1-104549-0
.000	.900	.900	1.950	39	2.130	80	104549-9
.000	.650	.650	1.450	29	1.630	60	104549-8
.025	.525	.525	1.200	24	1.380	50	104549-7
-	.400	.400	.950	19	1.130	40	104549-6
-	.275	.275	.700	14	.880	30	104549-5
<del>OBSELETE</del>	<del>-.225</del>	<del>.225</del>	<del>.600</del>	<del>12</del>	<del>.780</del>	<del>26</del>	<del>104549-4</del>
-	.200	.200	.550	11	.730	24	104549-3
-	.150	.150	.450	9	.630	20	104549-2
.494	-	.025	.200	4	-	10	104549-1

G	F	E	D	C	B	A	NO OF POSN	PART NUMBER
THIS DRAWING IS A CONTROLLED DOCUMENT.								DIN 13JUL92 R. K. SEIFRIED/UTA 23OCT92 CHK B. FLICKER 23OCT92 APPV B. FLICKER 23OCT92 NAME B. FLICKER PRODUCT SPEC APPLICATION SPEC SIZE CAGE CODE DRAWING NO WEIGHT CUSTOMER DRAWING
DIMENSIONS: INCHES		TOLERANCES UNLESS OTHERWISE SPECIFIED:		 0. PLC ± - 1. PLC ± - 2. PLC ± - 3. PLC ± .005 4. PLC ± - ANGLES ± -		 TE Connectivity NAME HEADER ASSEMBLY, W/SIDE & END LATCHES, VERTICAL, SHROUDED, DOUBLE ROW,SURFACE MOUNT, AMPMODU System 50, W/HOLDDOWNS		
MATERIAL: HOUSING: PPA COLOR: BLACK CONTACT: PHOSPHOR BRONZE		FINISH: SEE TABLE		WEIGHT: - SCALE: 4:1 SHEET 2 OF 2 REV S2		A1 00779 104549 SCALE: 4:1 SHEET 2 OF 2 REV S2		