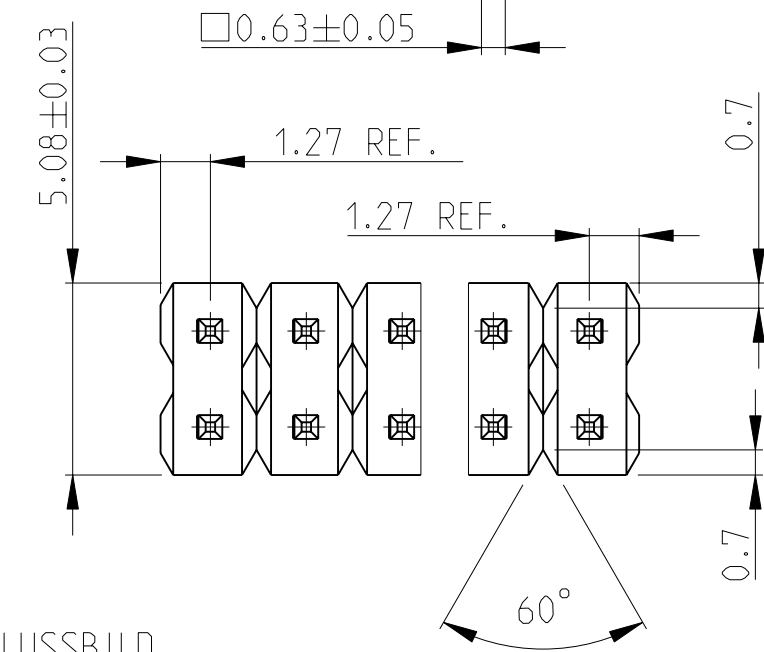
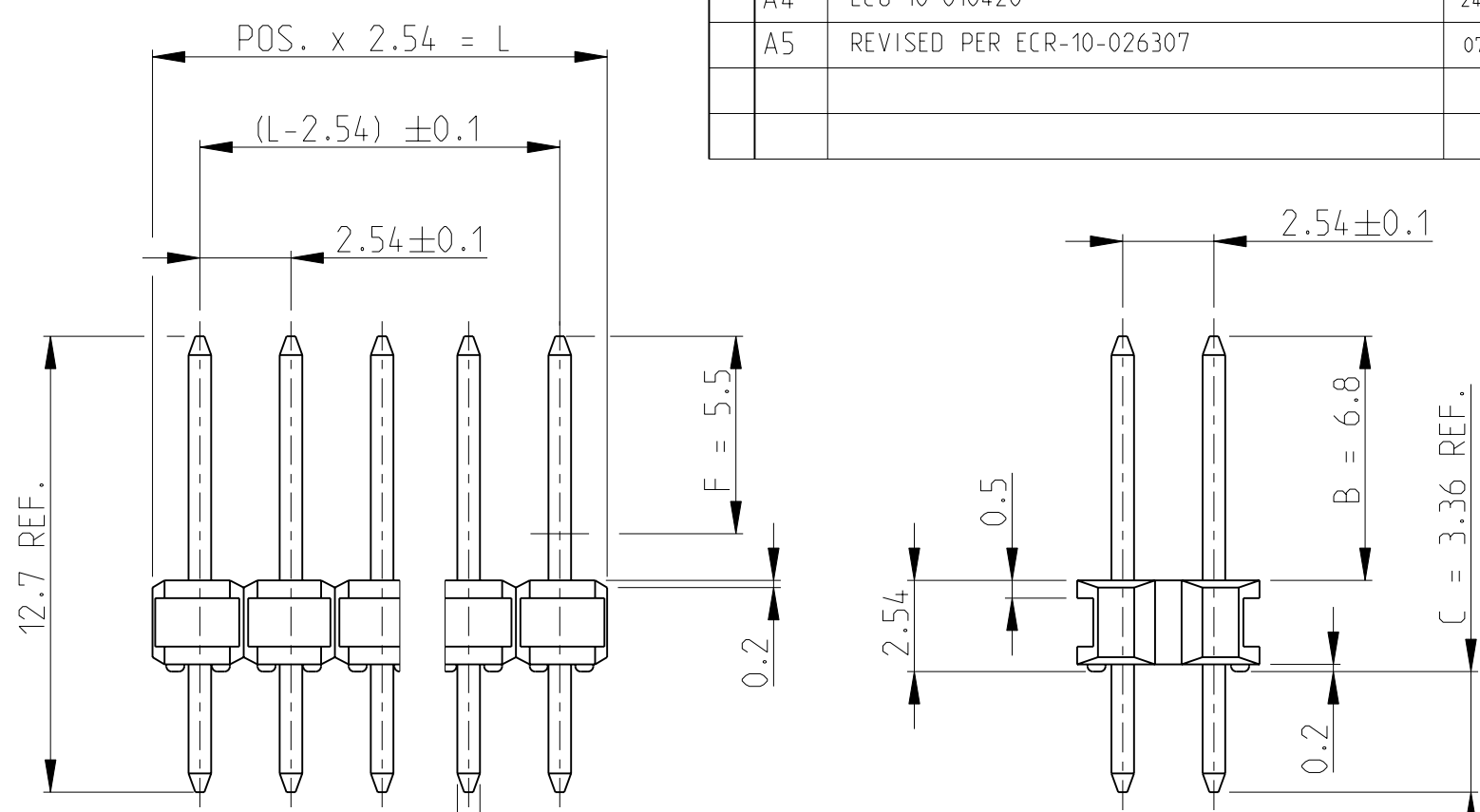


THIS DRAWING IS UNPUBLISHED
 RELEASED FOR PUBLICATION 2005
 © COPYRIGHT 2005 ALL RIGHTS RESERVED.

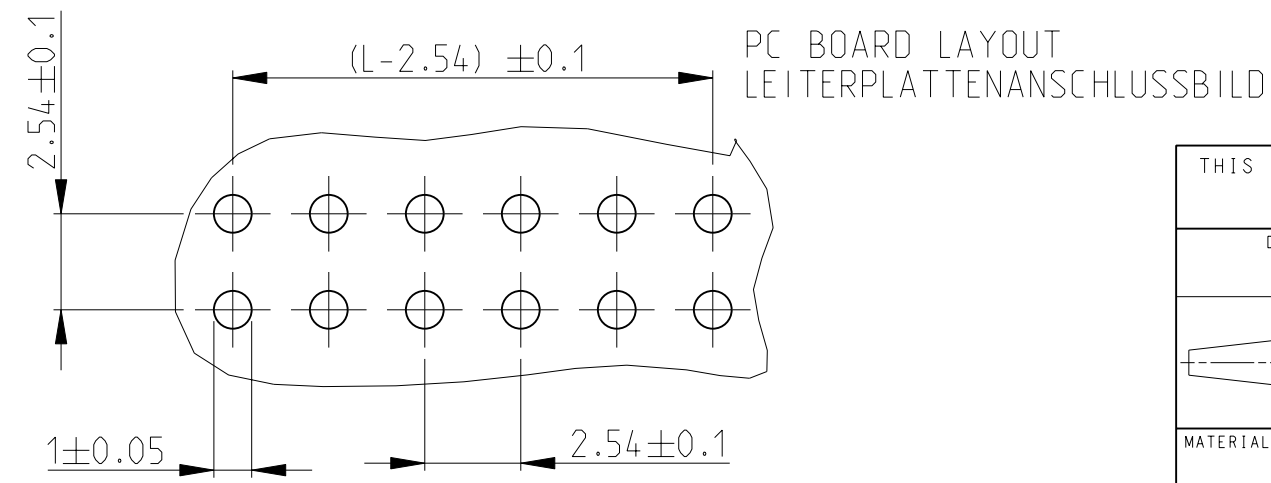
LOC	DIST	REVISIONS			
P	LTR	DESCRIPTION	DATE	DWN	APVD
A4	-	ECO-10-010420	24AUG10	RK	SRE
A5	-	REVISED PER ECR-10-026307	07JUN11	KK	HMR

POS. PER ROW	L ±0.5	PART - NO.	POS. PER ROW	L ±0.5	PART - NO.
-	-	-	26	66.04	2-829 394-6/2
2	5.08	829 394-2/3	27	68.58	2-7/2
3	7.62	-3	28	71.12	2-8/2
4	10.16	-4	29	73.66	2-9/2
5	12.70	-5	30	76.20	3-0/2
6	15.24	-6/3	31	78.74	3-1/2
7	17.78	-7	32	81.28	3-2
8	20.32	-8	33	83.82	3-3/2
9	22.86	-9/3	34	86.36	3-4/2
10	25.40	1-	35	88.90	3-5/2
11	27.94	4-1/2	36	91.44	3-6/2
12	30.48	4-2/2	37	93.98	3-7
13	33.02	4-3/3	38	96.52	3-8
14	35.56	4-4/2	39	99.06	3-9
15	38.10	4-5/3	40	101.60	4-0
16	40.64	4-6/2	41	104.14	4-1
17	43.18	1-7	42	106.68	4-2
18	45.72	4-8/2	43	109.22	4-3
19	48.26	4-9/2	44	111.76	4-4
20	50.80	2-0/3	45	114.30	4-5
21	53.34	2-1/3	46	116.84	4-6
22	55.88	2-2/2	47	119.38	4-7
23	58.42	2-3/2	48	121.92	4-8
24	60.96	2-4/2	49	124.46	4-9
25	63.50	2-829 394-5/3	50	127.00	5-829 394-0




- 1 IN AREA "F" 0.8 µm GOLD OVER 1.27 µm NICKEL IN AREA "B" IN AREA "C" MIN. 3 µm TIN OVER 1.27 µm NICKEL
- 2 OBSOLETE PARTS: OBSOLETE CIS STREAMLINING PER D.RENAUD/D.SINISI
- 3 OBSOLETE

1	Cu Sn 6	CONTACT PIN KONTAKTSTIFT
COLOUR GREEN	PBT GV UL 94 - V0	PINHOUSING STIFTGEHAEUSE
REMARK BEMERKUNG	MATERIAL	DESCRIPTION BEZEICHNUNG



THIS DRAWING IS A CONTROLLED DOCUMENT.

DWN G.ACKERMANN 24 JUN2005	 TE Connectivity NAME AMPMODU II PINHEADER, DUAL ROW AMPMODU II STIFTLISTE, ZWEIR.			
CHK M.SCHAARSCHMIDT 24 JUN2005				
APVD G.FELDMEIER 24 JUN2005				
PRODUCT SPEC				
DIMENSIONS: mm	TOLERANCES UNLESS OTHERWISE SPECIFIED:	APPLICATION SPEC		
0 PLC ±0.2	1 PLC ±0.2	2 PLC ±0.2		
3 PLC ±	4 PLC ±	ANGLES ±2°		
MATERIAL	FINISH	WEIGHT		
CUSTOMER DRAWING		SCALE 5:1	SHEET 1 OF 1	REV A5