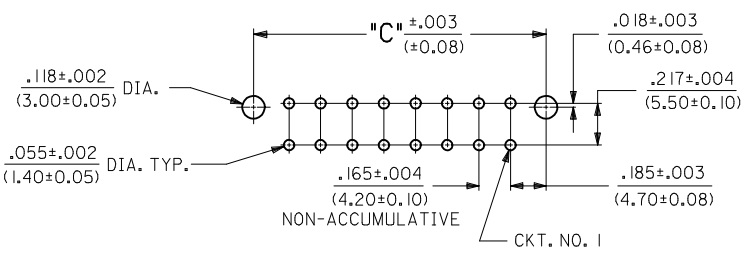
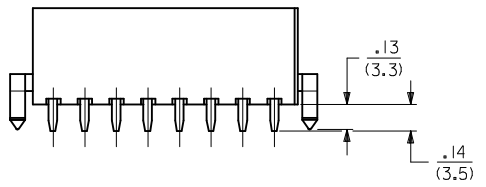
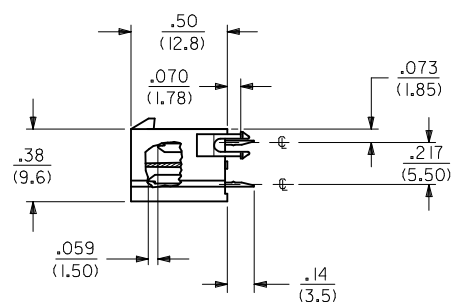
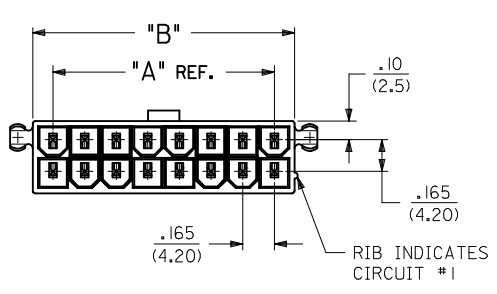
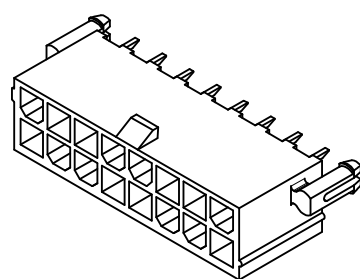


	13	12	11	10	9	8	7	6	5	4	3	2	1
	CIRCUIT SIZE	DIM. "A"	DIM. "B"	DIM. "C"									
J	2	—	.21 (5.4)	.370 (9.40)									
	4	.17 (4.2)	.38 (9.6)	.535 (13.60)									
	6	.33 (8.4)	.54 (13.8)	.701 (17.80)									
I	8	.50 (12.6)	.71 (18.0)	.866 (22.00)									
	10	.66 (16.8)	.87 (22.2)	1.031 (26.20)									
	12	.83 (21.0)	1.04 (26.4)	1.197 (30.40)									
H	14	.99 (25.2)	1.20 (30.6)	1.362 (34.60)									
	16	1.16 (29.4)	1.37 (34.8)	1.528 (38.80)									
	18	1.32 (33.6)	1.54 (39.0)	1.693 (43.00)									
G	20	1.49 (37.8)	1.70 (43.2)	1.858 (47.20)									
	22	1.65 (42.0)	1.87 (47.4)	2.024 (51.40)									
	24	1.82 (46.2)	2.03 (51.6)	2.189 (55.60)									

NOTES:

- HOUSING MATERIAL AND OPTIONS:
SEE CHARACTERISTICS LEGEND ON SHEET 2
TERMINAL MATERIAL: BRASS ALLOY
- TERMINAL PLATING:
"A"= .000100/(.00254) MIN. MATTE TIN OVER .000050/(.00127) MIN. NICKEL
"D"= .000100/(.00254) MIN. BRIGHT TIN OVER .000050/(.00127) MIN. NICKEL.
"E"= .000030/(.00076) MIN. SELECT HARD GOLD, .000100/(.00254) MIN. SELECT MATTE TIN, OVER .000050/(.00127) MIN. NICKEL OVERALL
- PRODUCT SPECIFICATION: PS-5556-001
- PACKAGING SPECIFICATION: SEE CHART ON SHEET 2
- PART MATES WITH MINI-FIT JR RECPTACLE #5557
- ITEM NUMBERS PRECEDED BY AN "X" IN THE CHART ARE NOT AVAILABLE
- PART CONFORMS TO CLASS "B" REQUIREMENTS OF COSMETIC SPECIFICATION PS-45499-002
- CONNECTOR ASSEMBLIES ARE NOT TO BE MATED OR UNMATED WHILE CIRCUITS ARE LIVE
- PARTS ARE NOT DESIGNED FOR CURRENT SHARING.



RECOMMENDED HOLE LAYOUT FOR .070/(1.78) MAX. THICK P.C. BOARD

VIEWED FROM COMPONENT SIDE

ADD 43460-0017 EC NO: UCP2016-0461 DRWN: MONT CHKD: JELL APPR: FSMITH 2015/07/30 2015/07/30 2015/08/10	QUALITY SYMBOLS ▽=0 ▽=0 ▽=0	GENERAL TOLERANCES (UNLESS SPECIFIED)		DIMENSION STYLE IN/MM		SCALE 2:1	DESIGN UNITS METRIC	THIRD ANGLE PROJECTION		
		4 PLACES ± --- ± ---	mm	INCH	DATE	2-24 CKT VERT HDR ASSY MIN-FIT JR MF/BL W/WO PEGS				
		3 PLACES ± --- ± .015			1994/12/14					
		2 PLACES ± 0.38 ± .020			DATE	molex				
1 PLACE ± 0.50 ± ---			2011/06/17							
0 PLACE ± ±			DATE	SDA-43460-****						
ANGULAR ±1/2°		MATERIAL NO.							DOCUMENT NO.	
DRAFT WHERE APPLICABLE MUST REMAIN WITHIN DIMENSIONS		SEE SHEET 2		1 OF 2						
THIS DRAWING CONTAINS INFORMATION THAT IS PROPRIETARY TO MOLEX INCORPORATED AND SHOULD NOT BE USED WITHOUT WRITTEN PERMISSION										

ITEM NO.	CHARACTERISTIC DESCRIPTION	TERMINAL VERSION REQUIRED AT EACH CIRCUIT LOCATION: (SEE CODES AT RIGHT)																								PACKAGING
		1	2	3	4	5	6	7	8	9	10	11	12	13	14	15	16	17	18	19	20	21	22	23	24	
J	43460-0001	I	I	8	8	-	-	-	-	-	-	-	-	-	-	-	-	-	-	-	-	-	-	-	-	BULK
	43460-0002	I	I	8	8	-	-	-	-	-	-	-	-	-	-	-	-	-	-	-	-	-	-	-	-	BULK
	43460-0003	I	I	8	8	-	-	-	-	-	-	-	-	-	-	-	-	-	-	-	-	-	-	-	-	BULK
	43460-0004	I	I	8	8	-	-	-	-	-	-	-	-	-	-	-	-	-	-	-	-	-	-	-	-	BULK
I	43460-0005	I	8	8	8	8	8	-	-	-	-	-	-	-	-	-	-	-	-	-	-	-	-	-	-	BULK
	43460-0006	I	8	8	8	8	8	-	-	-	-	-	-	-	-	-	-	-	-	-	-	-	-	-	-	BULK
	43460-0007	I	I	8	I	-	-	-	-	-	-	-	-	-	-	-	-	-	-	-	-	-	-	-	-	BULK
	43460-0008	8	8	8	1	-	-	-	-	-	-	-	-	-	-	-	-	-	-	-	-	-	-	-	-	BULK
H	43460-0009	I	8	8	8	8	8	8	8	8	8	8	8	1	-	-	-	-	-	-	-	-	-	-	-	BULK
	43460-0010	8	8	8	1	-	-	-	-	-	-	-	-	-	-	-	-	-	-	-	-	-	-	-	-	BULK
	43460-0011	9	5	-	-	-	-	-	-	-	-	-	-	-	-	-	-	-	-	-	-	-	-	-	-	BULK
	43460-0012	8	1	-	-	-	-	-	-	-	-	-	-	-	-	-	-	-	-	-	-	-	-	-	-	PK-5566-001
G	43460-0013	8	1	8	8	8	1	8	8	-	-	-	-	-	-	-	-	-	-	-	-	-	-	-	-	PK-5566-001
	43460-0014	1	8	8	8	-	-	-	-	-	-	-	-	-	-	-	-	-	-	-	-	-	-	-	-	PK-5566-001
	43460-0015	1	8	8	8	8	8	8	8	8	8	8	8	1	1	8	8	8	8	8	8	8	8	8	1	PK-5566-001
	43460-0016	3	10	10	10	10	10	10	10	10	10	10	3	3	10	10	10	10	10	10	10	10	10	3	PK-5566-001	
F	43460-0017	10	10	10	3	3	10	-	-	-	-	-	-	-	-	-	-	-	-	-	-	-	-	-	-	PK-5566-001

TERM. CODES FOR CHART AT LEFT		
TERMINAL NO.	PLATING /	MATERIAL
I=MAKE-FIRST	A	BRASS
3=MAKE-FIRST	E	BRASS
5=MAKE-FIRST	D	BRASS
8=STANDARD	A	BRASS
9=STANDARD	D	BRASS
10=STANDARD	E	BRASS

CHARACTERISTICS LEGEND:

CIRCUIT SIZE: _____ ** * * *

(02-24)

HOUSING MATERIAL AND OPTIONS: _____

A=NYLON 6/6, UNFILLED U.L. 94V-2, WITH PEGS, COLOR: NATURAL.
 B=NYLON 6/6, UNFILLED U.L. 94V-0, WITH PEGS, COLOR: NATURAL.
 E=NYLON 6/6, UNFILLED U.L. 94V-2, WITHOUT PEGS, COLOR: NATURAL.
 F=NYLON 6/6, UNFILLED U.L. 94V-0, WITHOUT PEGS, COLOR: NATURAL.

TERMINAL MATERIAL: _____

A=BRASS ALLOY

TERMINAL PLATING (SEE NOTE 2): _____

A= 100 MIN. MATTE TIN OVER 50 MIN. NICKEL
 D= 100 MIN. TIN OVER 50 MIN. NICKEL
 E= 30 MIN. GOLD AND 100 MIN. MATTE TIN OVER 50 MIN. NICKEL

SEE SHEET 1 EEC NO: UCP2016-0461 DRWN: JMOIT 2015/07/30 CHKD: JBEL 2015/07/30 APPR: FSMITH 2015/08/10	QUALITY SYMBOLS	GENERAL TOLERANCES (UNLESS SPECIFIED)	DIMENSION STYLE	SCALE	DESIGN UNITS	THIRD ANGLE PROJECTION
	▽=0	mm INCH	IN/MM	1:1	METRIC	☉
	▽=0	4 PLACES ± --- ± ---	DRAWN BY DATE	TITLE		
	▽=0	3 PLACES ± --- ± .015	AFG 1994/12/14	2-24 CKT VERT HDR ASSY		
	▽=0	2 PLACES ± 0.38 ± .020	CHECKED BY DATE	MIN-FIT JR MF/BL		
	1 PLACE ± 0.50 ± ---	RJF 1994/12/14	W/WO PEGS			
	0 PLACE ± ±	APPROVED BY DATE	molex			
		FSMITH 2011/06/17	MATERIAL NO.	DOCUMENT NO.	SHEET NO.	
			SEE CHART	SDA-43460-****	2 OF 2	
			DRAFT WHERE APPLICABLE MUST REMAIN WITHIN DIMENSIONS			
			THIS DRAWING CONTAINS INFORMATION THAT IS PROPRIETARY TO MOLEX INCORPORATED AND SHOULD NOT BE USED WITHOUT WRITTEN PERMISSION			