

MINIATURE TURRET TERMINAL BOARDS

MATERIAL: Choice of either PBE or GEE.

PBE: Paper base electrical, MIL-1-24768/20. Type XP natural, Temp. 250°F (121°C) max.

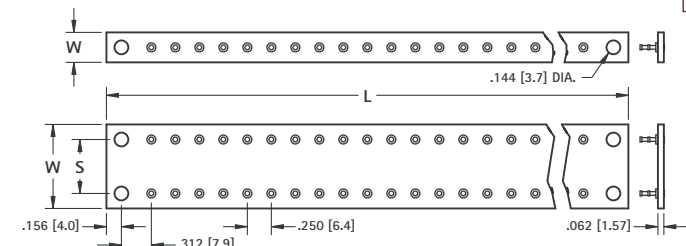
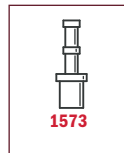
GEE: Glass Epoxy, MIL-I-24768/27, Type G-10, Temp. 300°F (155°C) max.

Terminals: Brass, ASTM-B16. Tin Plate, MIL-T-10727. Other platings can be furnished.

MODIFICATIONS

Boards can be modified with other materials or terminals of your choice. Marking can also be added. Quotations upon request.

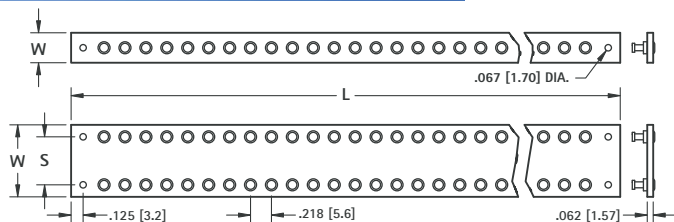
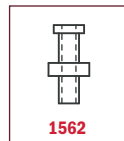
DOUBLE TURRET TERMINAL



W	S	L	NO. OF TERMS EACH SIDE	MATERIAL PBE CAT. NO.	MATERIAL GEE CAT. NO.
.312 (7.9)	Single Row	1.937 (49.2)	5	15431	15531
		3.687 (93.6)	12	15432	15532
		5.437 (138.1)	19	15433	15533
		7.187 (182.5)	26	15434	15534
		8.937 (227.0)	33	15435	15535
.875 (22.2)	.562 (14.3)	1.937 (49.2)	5	15436	15536
		3.687 (93.6)	12	15437	15537
		5.437 (138.1)	19	15438	15538
		7.187 (182.5)	26	15439	15539
		8.937 (227.0)	33	15440	15540
1.125 (28.6)	.812 (20.6)	1.937 (49.2)	5	15441	15541
		3.687 (93.6)	12	15442	15542
		5.437 (138.1)	19	15443	15543
		7.187 (182.5)	26	15444	15544
		8.937 (227.0)	33	15445	15545

Terminals are staked in all except end mounting holes.

THRU HOLE TERMINAL



W	S	L	NO. OF TERMS EACH SIDE	MATERIAL PBE CAT. NO.	MATERIAL GEE CAT. NO.
.312 (7.9)	Single Row	1.562 (39.7)	5	15401	15501
		3.093 (78.6)	12	15402	15502
		4.625 (117.5)	19	15403	15503
		6.156 (156.4)	26	15404	15504
		7.687 (195.2)	33	15405	15505
.750 (19.1)	.500 (12.7)	1.562 (39.7)	5	15406	15506
		3.093 (78.6)	12	15407	15507
		4.625 (117.5)	19	15408	15508
		6.156 (156.4)	26	15409	15509
		7.687 (195.2)	33	15410	15510
1.000 (25.4)	.750 (19.1)	1.562 (39.7)	5	15411	15511
		3.093 (78.6)	12	15412	15512
		4.625 (117.5)	19	15413	15513
		6.156 (156.4)	26	15414	15514
		7.687 (195.2)	33	15415	15515

Terminals are staked in all except end mounting holes.

MILITARY TERMINAL BOARDS

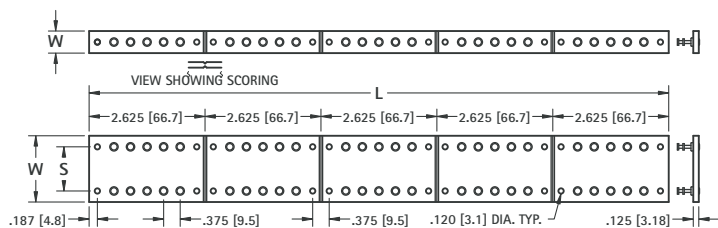
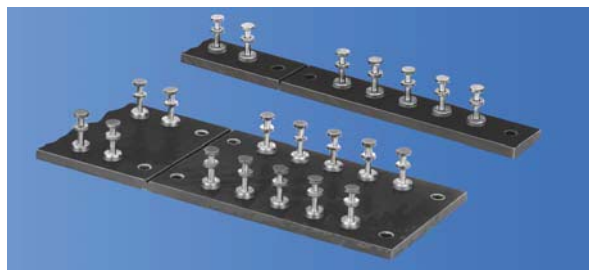
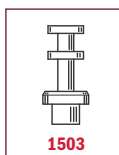
Terminal boards are manufactured as per Military specifications MS27249.

SPECIFICATIONS

Board Material: MIL-I-24768/27 TYPE GEE or TYPE GEB. MIL-1-24768/3 .125 (3.2)

Terminal: SE12XC09 PER MIL-T-55155 Tin/Lead Plated (Non-RoHS Compliant)

- Five sections **SCORED** for easy separation.
- Mounting holes in each section.



W	S	L	NO. OF TERMS EACH SIDE	MATERIAL GEB CAT. NO.	MATERIAL GEE CAT. NO.
.500 (12.7)	Single Row	2.625 (66.7)	5	MS27249-1B1	MS27249-1E1
		5.250 (133.4)	10	MS27249-1B2	MS27249-1E2
		7.875 (200.0)	15	MS27249-1B3	MS27249-1E3
		10.500 (266.7)	20	MS27249-1B4	MS27249-1E4
		13.125 (333.4)	25	MS27249-1B5	MS27249-1E5
1.500 (38.1)	1.000 (25.4)	2.625 (66.7)	5	MS27249-2B1	MS27249-2E1
		5.250 (133.4)	10	MS27249-2B2	MS27249-2E2
		7.875 (200.0)	15	MS27249-2B3	MS27249-2E3
		10.500 (266.7)	20	MS27249-2B4	MS27249-2E4
		13.125 (333.4)	25	MS27249-2B5	MS27249-2E5
2.000 (50.8)	1.500 (38.1)	2.625 (66.7)	5	MS27249-3B1	MS27249-3E1
		5.250 (133.4)	10	MS27249-3B2	MS27249-3E2
		7.875 (200.0)	15	MS27249-3B3	MS27249-3E3
		10.500 (266.7)	20	MS27249-3B4	MS27249-3E4
		13.125 (333.4)	25	MS27249-3B5	MS27249-3E5
2.500 (63.5)	2.000 (50.8)	2.625 (66.7)	5	MS27249-4B1	MS27249-4E1
		5.250 (133.4)	10	MS27249-4B2	MS27249-4E2
		7.875 (200.0)	15	MS27249-4B3	MS27249-4E3
		10.500 (266.7)	20	MS27249-4B4	MS27249-4E4
		13.125 (333.4)	25	MS27249-4B5	MS27249-4E5
3.000 (76.2)	2.500 (63.5)	2.625 (66.7)	5	MS27249-5B1	MS27249-5E1
		5.250 (133.4)	10	MS27249-5B2	MS27249-5E2
		7.875 (200.0)	15	MS27249-5B3	MS27249-5E3
		10.500 (266.7)	20	MS27249-5B4	MS27249-5E4
		13.125 (333.4)	25	MS27249-5B5	MS27249-5E5