

Table with columns: ATLANTIC VERSION TERMINATOR INTERFACE ADAPTER, PART NUMBER, REVISION, DESCRIPTION, FEED TYPE, CONVERT TO, PART NUMBERS REQUIRED. Includes a diagram of the terminator interface adapter.

Table: APPLICATOR DATA. Columns: CRIMP SIZE, WIRE, INSUL. Includes APPLICATOR INSTRUCTIONS 408-10389.

Table: TERMINAL DATA: TE TERMINAL TE CRIMP SPECIFICATION. Includes WIRE STRIP LENGTH, INSULATION DIAMETER RANGE, and TERMINALS APPLIED.

Table: TERMINAL DATA: TE TERMINAL TE CRIMP SPECIFICATION. Includes WIRE STRIP LENGTH, INSULATION DIAMETER RANGE, and TERMINALS APPLIED.

Table: TERMINAL DATA: TE TERMINAL TE CRIMP SPECIFICATION. Includes WIRE STRIP LENGTH, INSULATION DIAMETER RANGE, and TERMINALS APPLIED.

Table: WIRE SIZE, CRIMP HEIGHT mm [INCH], CRIMP HEIGHT REFERENCE SETTING.

Table: WIRE SIZE, CRIMP HEIGHT mm [INCH], CRIMP HEIGHT REFERENCE SETTING.

Table: WIRE SIZE, CRIMP HEIGHT mm [INCH], CRIMP HEIGHT REFERENCE SETTING.

- 1 RECOMMENDED SPARE PARTS
2 GREASE BEARING SURFACES LIGHTLY
3 LUBRICATE DAILY PER THE APPLICATOR INSTRUCTION SHEET SUPPLIED WITH THE APPLICATOR.
4 APPLICATOR SPECIFIC DATA TO BE ENTERED INTO BLANK MEMORY CHIP AT ASSEMBLY. SEE BELOW FOR PART NUMBER: MECHANICAL FEED WITH "SMART APPLICATOR" CONVERSION: 8-2266602-4 PNEUMATIC FEED WITH "SMART APPLICATOR" CONVERSION: 8-2266602-4 SERVO FEED WITH "FINE CRIMP HEIGHT ADJUST": 8-2266602-5 SERVO FEED WITH "NON-CRIMP HEIGHT ADJUST": 8-2266602-6
5. ADJUSTMENT OF THE STRIPPER MAY BE REQUIRED WHEN MOVING THE APPLICATOR BETWEEN BENCH AND LEADMAKER APPLICATIONS.
6 APPLY PART NUMBER 1-23419-5 LOCTITE TO THREADS OF ITEMS 62. APPLY PART NUMBER 2-23419-6 LOCTITE TO THREADS OF ITEMS 242. FOR -6 ONLY APPLY PART NUMBER 1-23419-5 LOCTITE TO THREADS OF ITEM 37.
7 GREASE THREADS, GROOVE AND O-RING ON ITEMS 35 & 252.
8 MAGNET, ITEM 166 MUST BE ORIENTED CORRECTLY IN ORDER TO PROPERLY ACTUATE THE COUNTER.
9 CRIMP HEIGHT REFERENCE SETTING WAS THE SETTING USED WHEN THE APPLICATOR WAS QUALIFIED AT THE FACTORY. ADJUSTMENT MAY BE NECESSARY WHEN RUNNING APPLICATOR IN THE FIELD.
10 SPARE FEED CAM STORAGE LOCATION REFER TO INSTRUCTION SHEET FOR ADDITIONAL INFORMATION.
11 TO CONVERT THE APPLICATOR TO A NON-CARRIER CUTTING STYLE, REMOVE ITEM 13 AND ATTACH TO THE LOCATION ON THE BACK SIDE OF THE HOUSING. REFER TO INSTRUCTION SHEET FOR ADDITIONAL INFORMATION.
12 WHEN ASSEMBLING -6 NON-CRIMP HEIGHT ADJUST APPLICATOR USE SHIM PACK 2119957-2 TO ALIGN APPLICATOR'S MAXIMUM WIRE CRIMP HEIGHT AT NORMAL TERMINATOR SHUT HEIGHT
13. THIS APPLICATOR IS SPECIFIC FOR USE IN A STRIPPER SEAL TERMINATING UNIT.

*WARNING
ON INSTALLATION, SET WIRE DISC, ITEM 40 TO LARGEST WIRE SIZE SETTING. USE OF SETTINGS BELOW MINIMUM REQUIRED CRIMP HEIGHT SETTING WILL CAUSE DAMAGE TO CRIMP TOOLING.

Table with columns: PART NO, DESCRIPTION, ITEM NO. Includes items like APPLICATOR SHIM PACK, O-RING, PUSH ROD, BUSHING.

ATLANTIC VERSION
Shown on sheets 1 of 4 & 2 of 4
(Pacific version shown on sheets 3 of 4 & 4 of 4)

Table: REVISIONS. Columns: REVISION, DESCRIPTION, DATE, DWN, APVD. Includes SET UP GAUGE 2119599-1.

Table with columns: P, L, M, DESCRIPTION, DATE, DWN, APVD. Includes various components like FEED CAM, DETENT PIN, SPRING, COMPRESSION, RAM, AMP STYLE, SIDE FEED, NON-ADJ., CAM, SNAIL, INSULATION ADJUSTMENT, WASHER, WAVE SPRING, CREST-TO-CREST, RETAINER, INSULATION DIAL, SCR, SGT HD CAP M3 X 4.0, SHCS, LOW HEAD, RoHS, M5 X 16, MECHANICAL FEED ASSEMBLY, AIR FEED MODULE, TAG, IDENTIFICATION, SPACER, FEEDER, RING, RETAIN, EXTERN, 3/16 CRESCENT, MAGNET, RARE EARTH HIGH ENERGY, COUNTER, MAGNETIC, SPRING, FEED FINGER, PIN, RETAIN, GRVD, 3/16 X .854, HOLDER, FEED FINGER, AF, MEMORY CHIP, PROGRAMMED, SERVO FEED LATCH ASM, WASHER, FLAT, REG M4, FEED FINGER ASSEMBLY, SF, SPACER, CRIMPER, SPRING, COMPRESSION, HOLDER, INS, DOCUMENTATION PACKAGE, DEPRESSOR, WIRE, TAG, IDENTIFICATION, SCREW, DRIVE, RH, RoHS, 2 x .188, LIMITER, ADJUSTMENT BOLT, SCR, SET, SOC, CONE POINT, M3 x 4.0, SCR, BHSC, RoHS (M4 X 8), SCR, HEX HD CAP, M4 X 6.0, PIN, SLOTTED SPRING .062 X .250, PAWL, FEED, SHCS, LOW HEAD, RoHS, M4 X 12, SCR, SGT HD CAP, RoHS, M4 X 10, NUT, HEX, REG, RoHS, M3, BUMPER, HOLD DOWN, SPACER, TONKER, SCR, SGT HD CAP M4 X 6.0, FEED CAM, PRE FEED, FEED CAM, POST FEED, APPLICATOR BASIC ASSEMBLY, SF, RAM, AMP STYLE, SIDE FEED, SCR, BHSC, RoHS (M8 X 25), DISC, NUMBERED FA WIRE ADJUSTMENT, APPLICATOR SHIM PACK, RAM WASHER, PRECISION, FA HEAD, ATLANTIC STYLE, BOLT, ADJUSTMENT, SUPPORT, TERMINAL, SCR, BHSC, RoHS (M4 X 20), HEX HEAD, FLANGED, M5 X 8mm LONG, SPACER, STRIP GUIDE, ASSEMBLY, STRIP GUIDE, SPACER, CRIMPER, STRIP GUIDE, SCR, SGT HD CAP, RoHS, M4 X 8.0, WASHER, FLAT, REG M4, STRIPPER, SIDE FEED, INSERT, SHEAR, SPRING, COMPRESSION, STOP, SHEAR, SHEAR HOLDER, FRONT, FLOATING SHEAR, FRONT, ANVIL, COMBINATION, DEPRESSOR, SHEAR, BLOCK, CRIMPER SPACER, CRIMPER, INSULATION F PREMIUM, SPACER, CRIMPER, CRIMPER, WIRE PREMIUM.

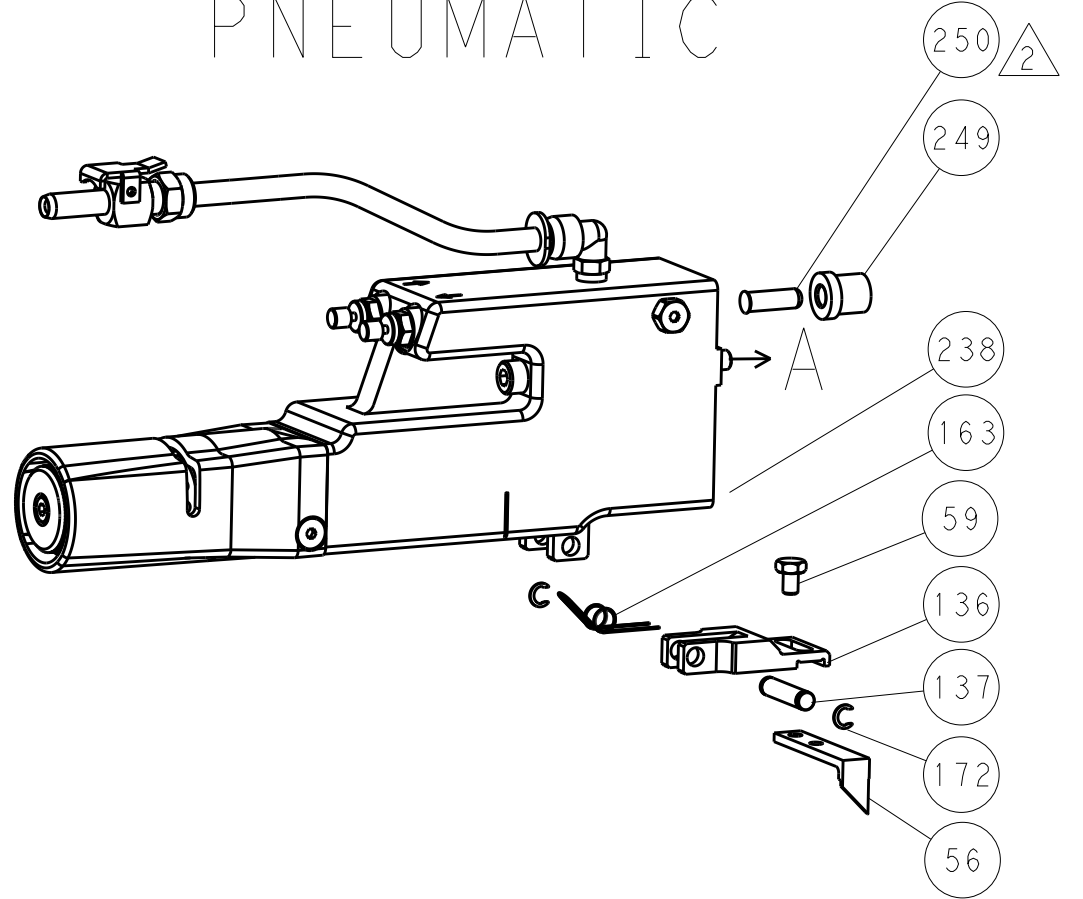
Table: DIMENSIONS, TOLERANCES UNLESS OTHERWISE SPECIFIED, MATERIAL, FINISH, WEIGHT, SCALE, SHEET 1 OF 4, REV A.

LOC		DIST		REVISIONS				
A	66	P	LYN	DESCRIPTION	DATE	OWN	APVD	
		-		SEE SHEET 1				

FEED TYPE MECHANICAL



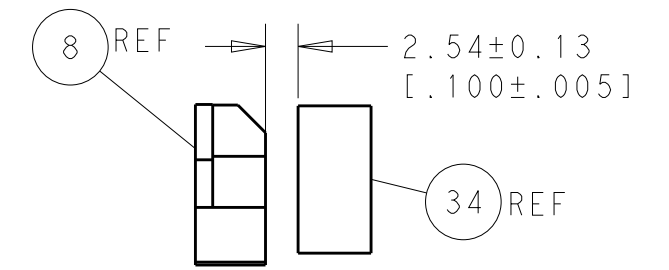
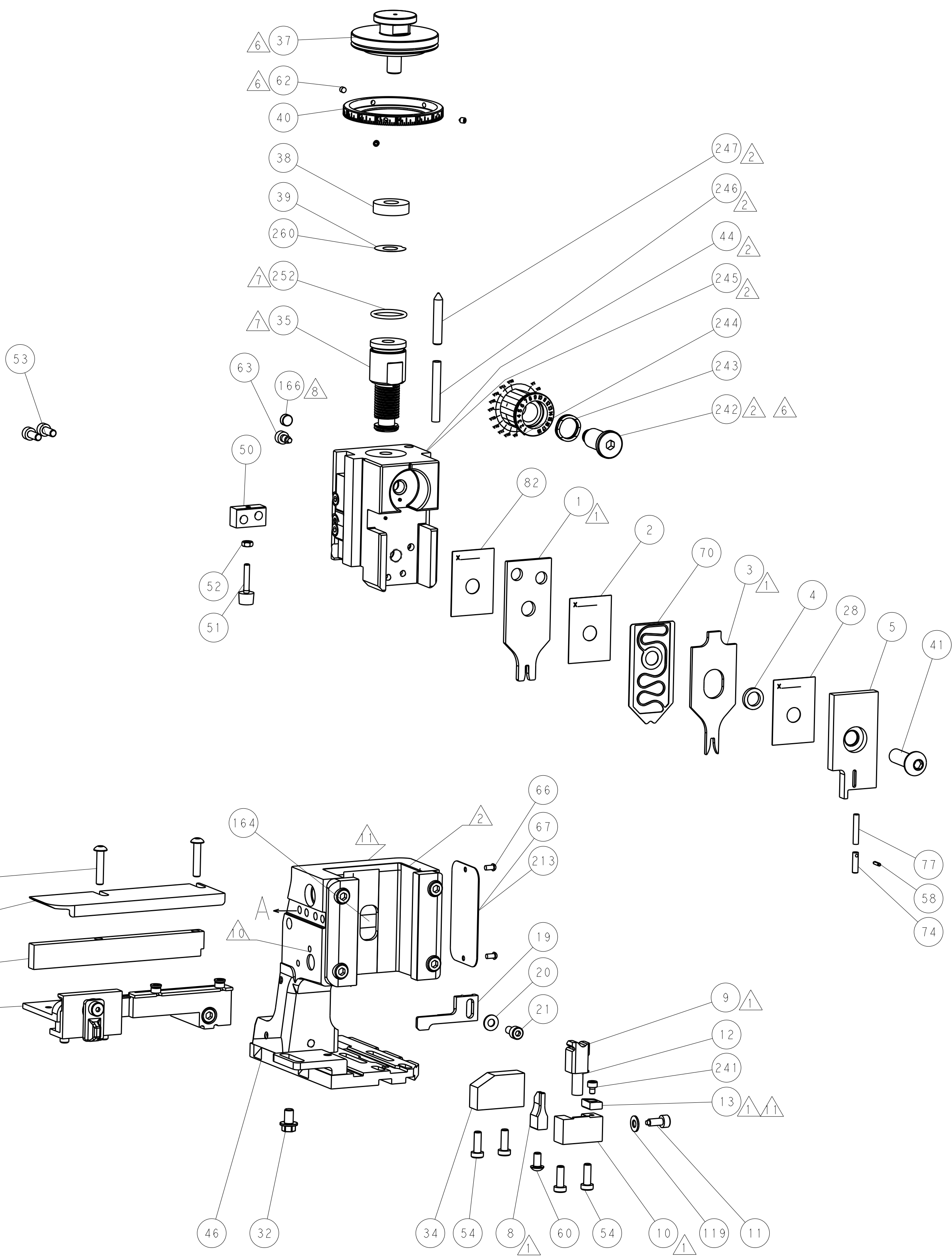
PNEUMATIC



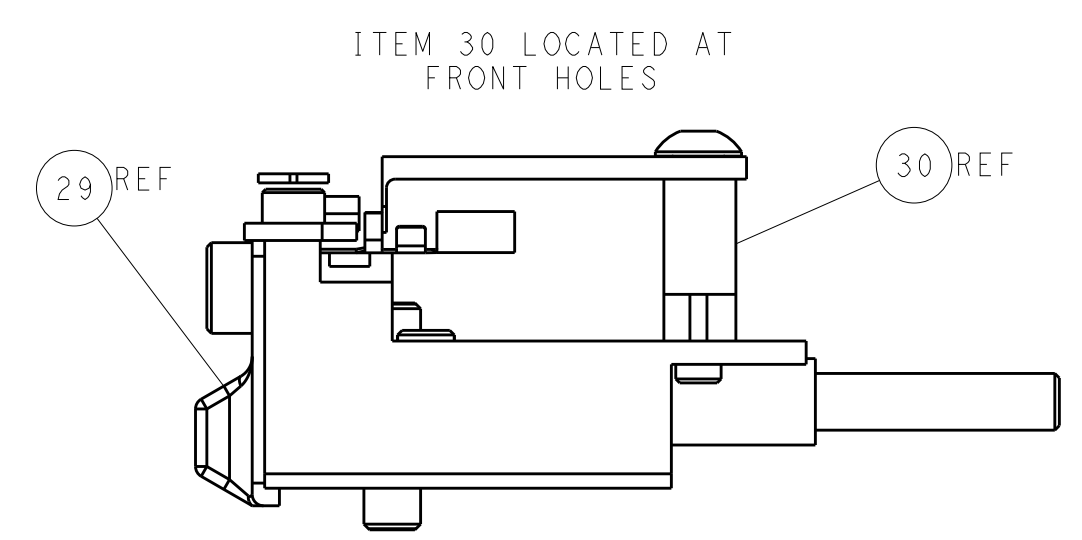
SERVO LATCH PLATE



CAM POSITIONS



TERMINAL SUPPORT LOCATION



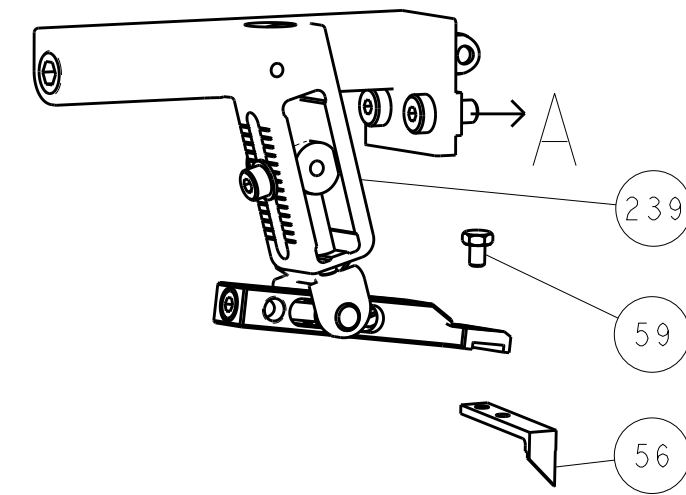
FEED TRACK POSITION GUIDE BY INSULATION BARREL

ATLANTIC VERSION
 Shown on sheets 1 of 4 & 2 of 4
 (Pacific version shown on sheets 3 of 4 & 4 of 4)

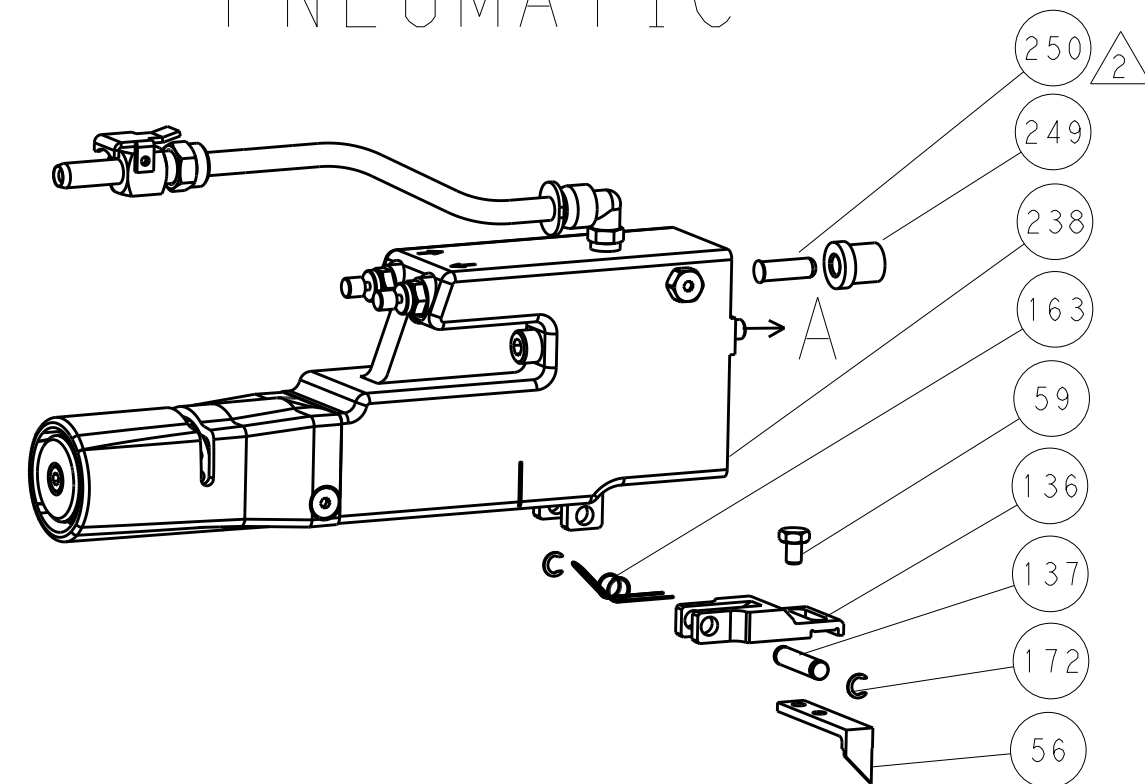
DIMENSIONS:		TOLERANCES UNLESS OTHERWISE SPECIFIED:		DWG: H. HUANG 08DEC2014		TE Connectivity	
mm	0 PLC ±.5	1 PLC ±0.5	2 PLC ±0.13	3 PLC ±0.013	4 PLC ±0.001	CHK: L. ZHANG 08DEC2014	Harrisburg, PA 17105-3608
MATERIAL:		FINISH:		APVD: H. GUO 08DEC2014		NAME: Ocean Side Feed Applicator	
				WEIGHT:		SIZE: CAGE CODE: DRAWING NO: A11 00779 ©=2266602	
				Customer Accessible Production Drawing		SCALE: 1:2 SHEET 2 OF 4 REV A	

LOC		DIST		REVISIONS			
A	66	P	LTM	DESCRIPTION	DATE	OWN	APVD
		-		SEE SHEET 1			

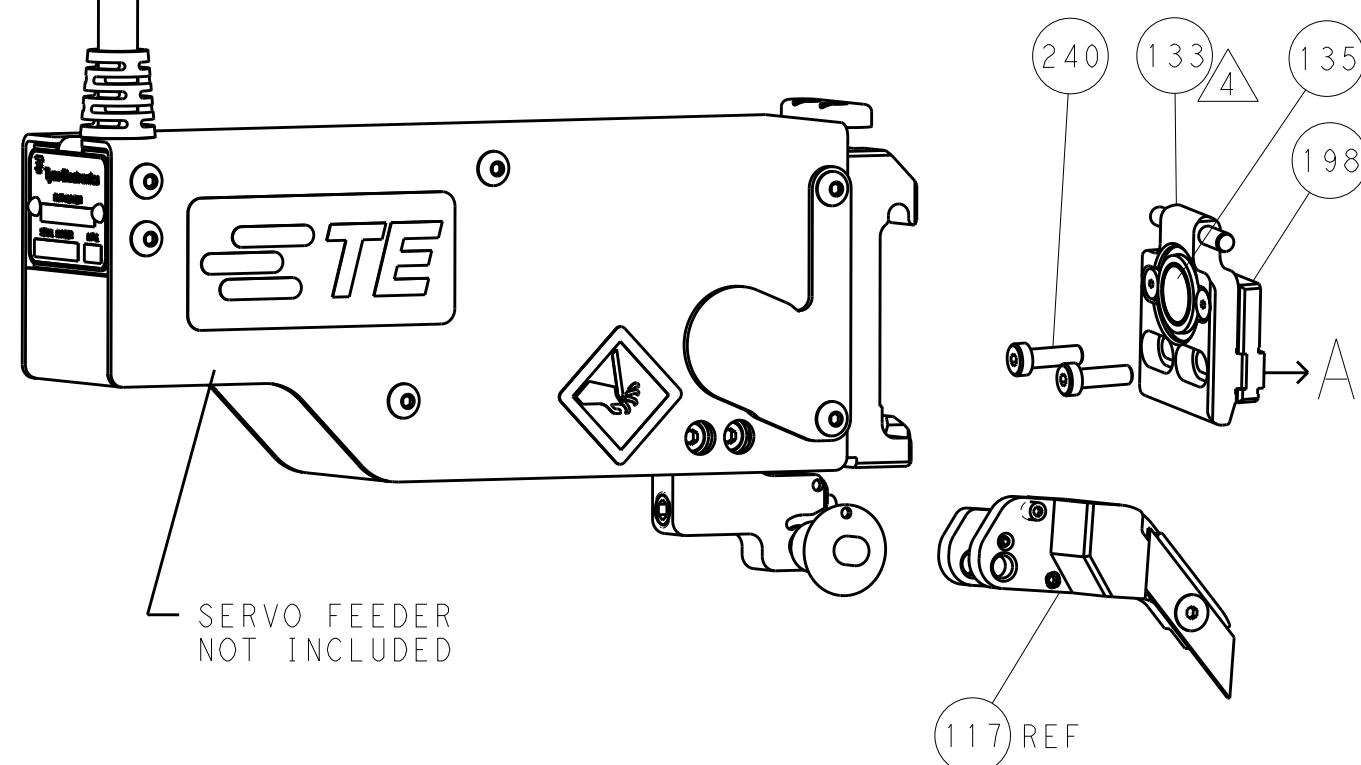
FEED TYPE MECHANICAL



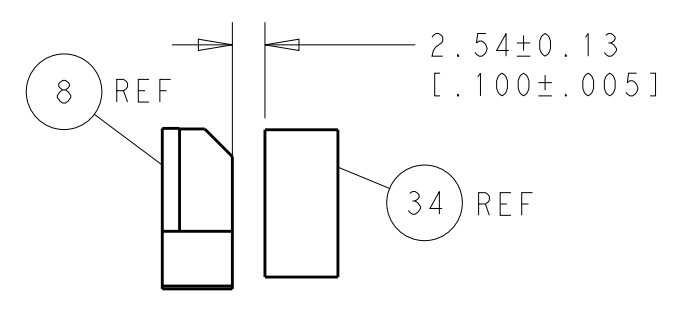
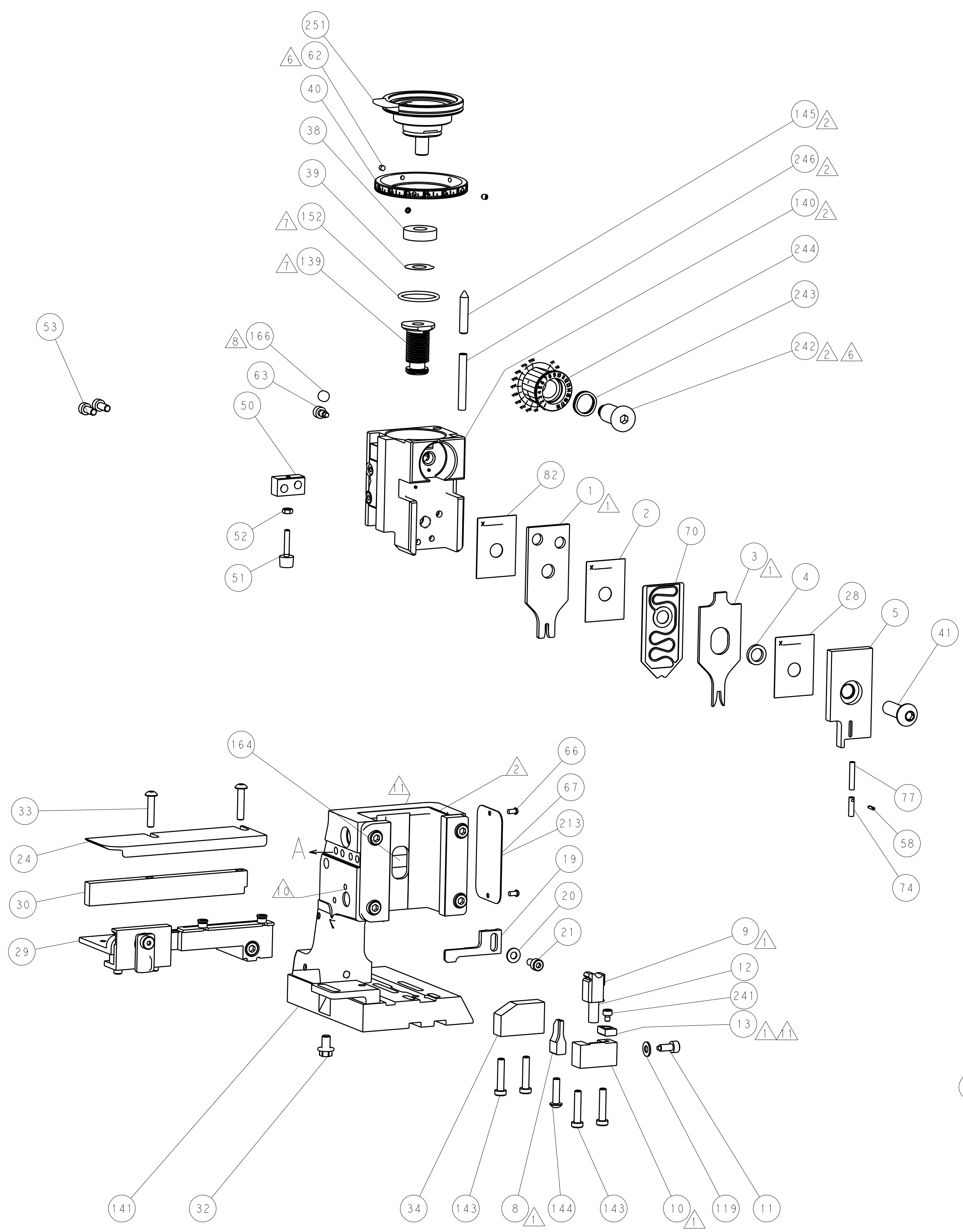
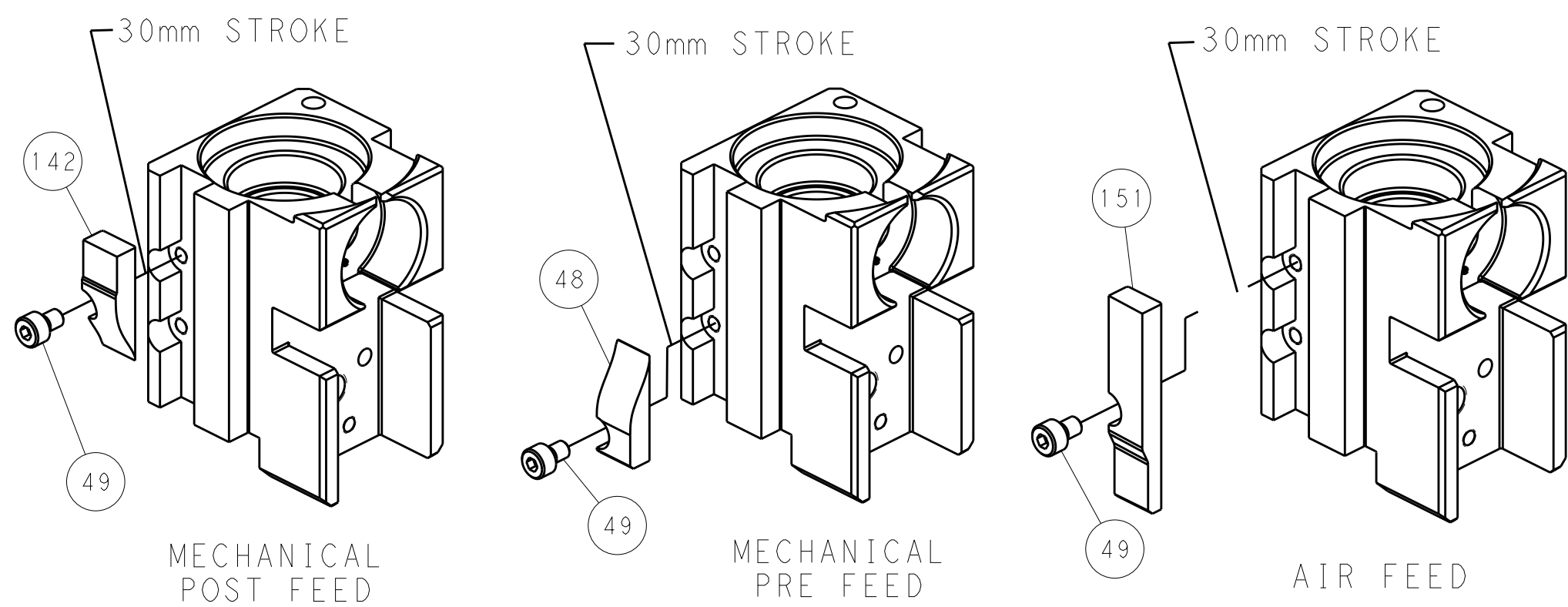
PNEUMATIC



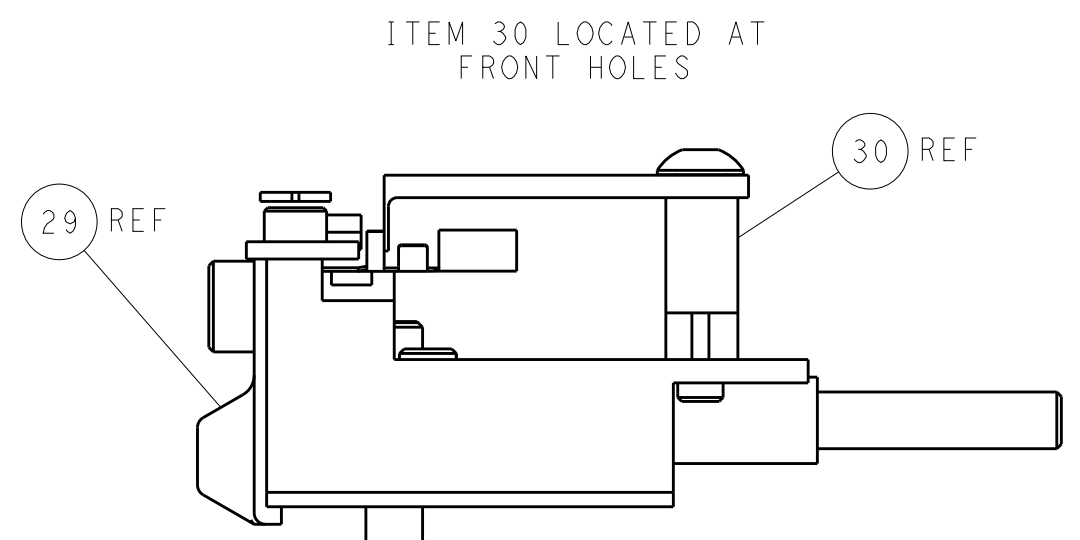
SERVO LATCH PLATE



CAM POSITIONS



TERMINAL SUPPORT LOCATION



FEED TRACK POSITION GUIDE BY INSULATION BARREL

PACIFIC VERSION
 Shown on sheets 3 of 4 & 4 of 4
 (Atlantic version shown on sheets 1 of 4 & 2 of 4)

DIMENSIONS: mm 		TOLERANCES UNLESS OTHERWISE SPECIFIED: 0 PLC ±.5 1 PLC ±0.5 2 PLC ±0.13 3 PLC ±0.013 4 PLC ±0.001 ANGLES ±.1		DWN R. HUANG 08DEC2014 CHK L. ZHANG 08DEC2014 APVD H. GUO 08DEC2014		NAME Ocean Side Feed Applicator	
MATERIAL:		FINISH:		WEIGHT:		SIZE: CAGE CODE DRAWING NO: A1 00779 ©=2266602	
Customer Accessible Production Drawing				SCALE: 1:2		SHEET 4 OF 4 REV A	