

Printed-circuit board connector - IPC 35 HC/ 2-STF-15,00 - 1784790

Please be informed that the data shown in this PDF Document is generated from our Online Catalog. Please find the complete data in the user's documentation. Our General Terms of Use for Downloads are valid (<http://download.phoenixcontact.com>)

Plug component, Nominal current: 125 A, Rated voltage (III/2): 1000 V, Number of positions: 2, Pitch: 15 mm, Connection method: Screw connection, Color: green, Contact surface: Silver




Product Features

- ✓ Low insertion and withdrawal forces for user-friendly device connection
- ✓ Connection capacity of up to 35 mm²
- ✓ Current carrying capacity of up to 125 A
- ✓ Unlimited 600 V UL approval
- ✓ Inverted high-capacity plugs with pin contact for touch-proof device outputs or free-hanging cable/cable connections
- ✓ Maximum contact reliability due to integrated double steel spring
- ✓ Standard with screw flange for reliable connection even in applications subject to vibration



Key commercial data

| | |
|----------------------|---|
| Packing unit | 1 PCE |
| GTIN |  4 046356 561105 |
| Custom tariff number | 85366990 |
| Country of origin | GERMANY |

Technical data

Dimensions / positions

| | |
|---------------------|-------|
| Length | 58 mm |
| Height | 40 mm |
| Pitch | 15 mm |
| Dimension a | 15 mm |
| Number of positions | 2 |
| Screw thread | M5 |

Printed-circuit board connector - IPC 35 HC/ 2-STF-15,00 - 1784790

Technical data

Dimensions / positions

| | |
|------------------------|--------|
| Tightening torque, min | 2.5 Nm |
| Tightening torque max | 4.5 Nm |

Technical data

| | |
|---|--------------------|
| Range of articles | IPC 35 HC/...STF |
| Insulating material group | I |
| Rated surge voltage (III/3) | 8 kV |
| Rated surge voltage (III/2) | 8 kV |
| Rated surge voltage (II/2) | 8 kV |
| Rated voltage (III/2) | 1000 V |
| Rated voltage (II/2) | 1000 V |
| Connection in acc. with standard | EN-VDE |
| Nominal current I_N | 125 A |
| Nominal voltage U_N | 1000 V |
| Nominal cross section | 35 mm ² |
| Maximum load current | 125 A |
| Insulating material | PA |
| Inflammability class according to UL 94 | V0 |
| Stripping length | 20 mm |
| Nominal voltage, UL/CUL Use Group B | 600 V |
| Nominal current, UL/CUL Use Group B | 115 A |
| Nominal voltage, UL/CUL Use Group C | 600 V |
| Nominal current, UL/CUL Use Group C | 115 A |

Connection data

| | |
|--|---------------------|
| Conductor cross section solid min. | 0.5 mm ² |
| Conductor cross section solid max. | 35 mm ² |
| Conductor cross section stranded min. | 0.5 mm ² |
| Conductor cross section stranded max. | 35 mm ² |
| Conductor cross section stranded, with ferrule without plastic sleeve min. | 1 mm ² |
| Conductor cross section stranded, with ferrule without plastic sleeve max. | 35 mm ² |
| Conductor cross section stranded, with ferrule with plastic sleeve min. | 1.5 mm ² |
| Conductor cross section stranded, with ferrule with plastic sleeve max. | 35 mm ² |
| Conductor cross section AWG/kcmil min. | 20 |
| Conductor cross section AWG/kcmil max | 2 |
| 2 conductors with same cross section, solid min. | 0.5 mm ² |
| 2 conductors with same cross section, solid max. | 6 mm ² |
| 2 conductors with same cross section, stranded min. | 0.5 mm ² |

Printed-circuit board connector - IPC 35 HC/ 2-STF-15,00 - 1784790

Technical data

Connection data

| | |
|---|---------------------|
| 2 conductors with same cross section, stranded max. | 6 mm ² |
| 2 conductors with same cross section, stranded, ferrules without plastic sleeve, min. | 0.5 mm ² |
| 2 conductors with same cross section, stranded, ferrules without plastic sleeve, max. | 4 mm ² |
| 2 conductors with same cross section, stranded, TWIN ferrules with plastic sleeve, min. | 0.5 mm ² |
| 2 conductors with same cross section, stranded, TWIN ferrules with plastic sleeve, max. | 6 mm ² |
| Minimum AWG according to UL/CUL | 16 |
| Maximum AWG according to UL/CUL | 2 |

Classifications

ETIM

| | |
|----------|----------|
| ETIM 4.0 | EC002638 |
| ETIM 5.0 | EC002638 |

UNSPSC

| | |
|---------------|----------|
| UNSPSC 11 | 39121409 |
| UNSPSC 12.01 | 39121409 |
| UNSPSC 13.2 | 39121409 |
| UNSPSC 6.01 | 30211810 |
| UNSPSC 7.0901 | 39121409 |

eCl@ss

| | |
|------------|----------|
| eCl@ss 4.0 | 272607xx |
| eCl@ss 4.1 | 27260701 |
| eCl@ss 5.0 | 27260701 |
| eCl@ss 5.1 | 27141190 |
| eCl@ss 6.0 | 27260704 |
| eCl@ss 7.0 | 27440402 |

Approvals

Approvals

Approvals

UL Recognized / GOST / GOST

Printed-circuit board connector - IPC 35 HC/ 2-STF-15,00 - 1784790

Approvals

Ex Approvals

Approvals submitted

Approval details

| | | | |
|--------------------------------|-------|-------|-------|
| UL Recognized | | | |
| | | B | C |
| mm ² /AWG/kcmil | 16-12 | 16-2 | 16-2 |
| Nominal current I _N | 20 A | 115 A | 115 A |
| Nominal voltage U _N | 600 V | 600 V | 600 V |

| |
|------|
| GOST |
|------|

| |
|------|
| GOST |
|------|

Accessories

Accessories

Plug/Adapter

Coding profile - CP-HC - 1686478



Encoding profile, 4 encoding profiles per strip, 40 strips per unit pack, for insertion in encoding grooves

Tools

Printed-circuit board connector - IPC 35 HC/ 2-STF-15,00 - 1784790

Accessories

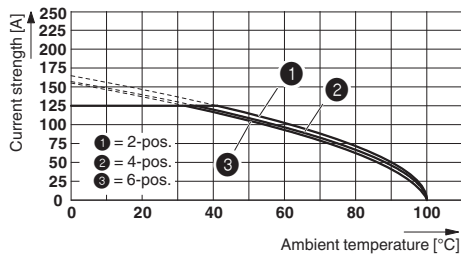
Phillips-screwdriver - SZS 1,0X6,5 VDE - 1205079



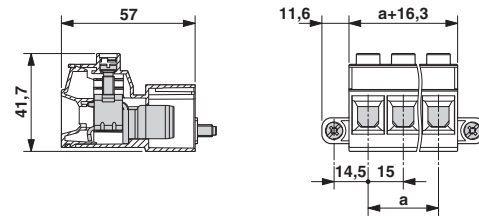
Screwdriver, slot-headed, VDE insulated, size: 1.0 x 6.5 x 150 mm, 2-component grip, with non-slip grip

Drawings

Diagram



Dimensioned drawing



Derating curve for: IPC 35 HC/...-STF-15,0 with IPC 35 HC/...-GF-15,0