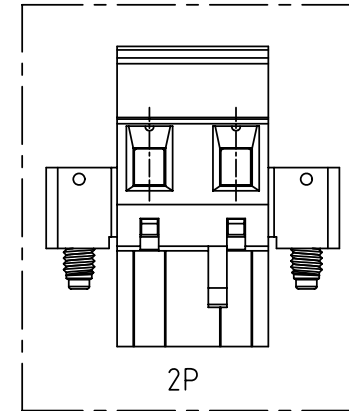
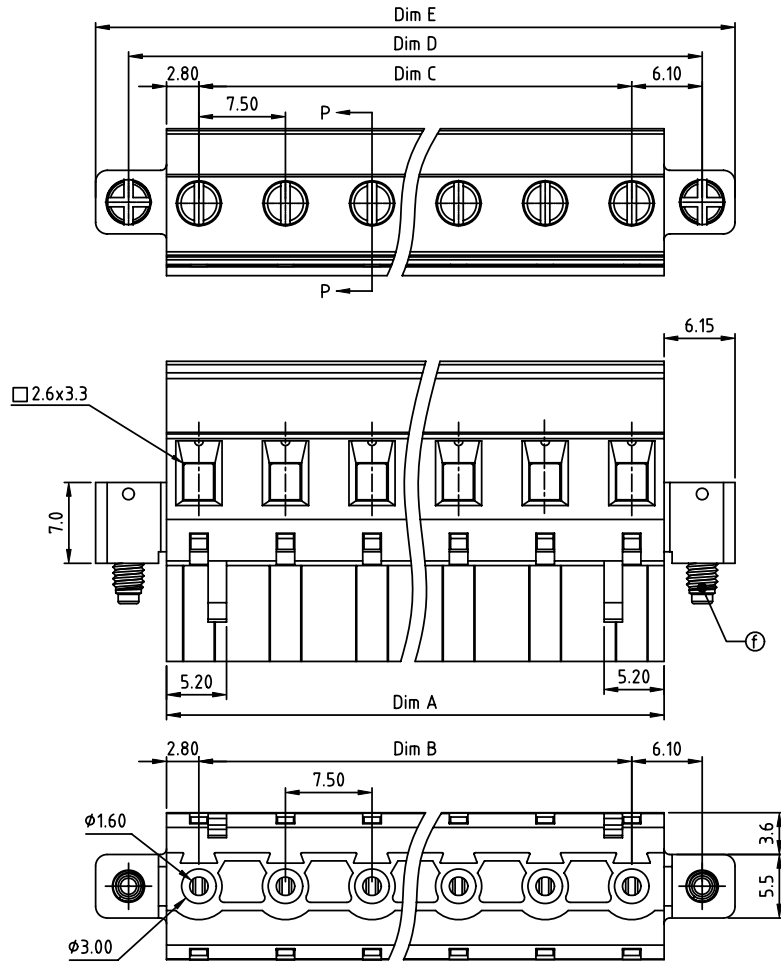


PRODUCT NUMBER	PITCH
TSxxA1xC00J0G	7.50 mm



Material

- Item Ⓐ Top body: Thermoplastic (UL94V-0)
 - Item Ⓑ Bottom body: Thermoplastic (UL94V-0)
 - Item Ⓒ Terminal screw: Steel Zinc plating "-" slot type
 - Item Ⓓ Clamp: Brass, Ni plated
 - Item Ⓔ Female contact: PhBz (CuSn) Tin plated
 - Item Ⓕ With flange screw: Steel Zinc plating M2.5 "+/-" combination type
- Electrical** cULus/TUV
- Voltage rating: 300VAC/750VAC
 - Current rating: 15A/15A
 - Wire range: 0.2-2.5mm²
 - Solid wire(AWG): 12-24
 - Stranded wire(AWG): 12-24
 - Torque: 3.5 Lb-In 0.4Nm
 - Screw: M3
 - Wire strip length: 6-7mm
 - Withstanding Voltage: 1.6KV/6KV
 - Operating temperature: -40°C to +115°C
 - Safety Approval:

Dim A=(N-1)×7.5+5.6
 Dim B=(N-1)×7.5
 Dim C=(N-1)×7.5
 Dim D=(N-1)×7.5+12.2
 Dim E=(N-1)×7.5+17.9
 N=Number of poles

POLES	Tolerance
2p-6p	±0.20
7p-11p	±0.30
12p-16p	±0.40

PART NO.: TS xx A1 x C 00J0 G

Solid block	No. of poles	Color	RoHS compliant (lead<4%) In copper Alloy
0	2	Black (RAL9005)	
02	2 poles	Red (RAL3001/D)	
03	3 poles	Orange(RAL2011/P)	
04	4 poles	Yellow(RAL1018/A)	
05	5 poles	Green(RAL6018/T)	
06	6 poles	Blue (RAL5015/A)	
08	8 poles	Grey(RAL7035/D)	
09	9 poles	White(RAL1102)	
16	16 poles	Green(RAL6018/U)	

mat'l. code		surface ASME Y14.5	tolerance ASME Y14.5	projection	product family TERMINAL BLOCK
ltr	ecn no	dr	date	tolerances unless otherwise specified	title TERMINAL BLOCK
				angles X±1°	PLUGGABLE PLUG,HOOK ON ENTRY SIDE,WITH FLANGE
				scale	sheet 1 of 1 size A4
				dr EVIN ZHONG 041914	FCI
				enr EVIN ZHONG 041914	TSxxA1xC00J0G
				chr HANKE FENG 041914	type CUSTOMER Drawing
				appd SHI JUN 041914	
sheet index	revision	A			
	sheet	1			