

SIGN	DATE	DESCRIPTION	APPROVER

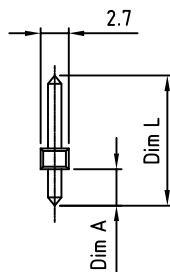
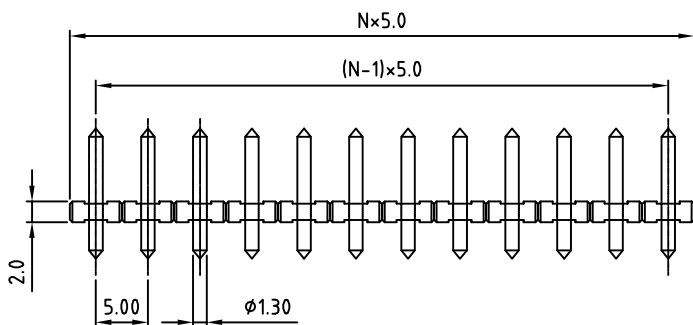
THIS IS CAD DRAWING, DO NOT REVISE MANUALLY!!!

- Material:
- Solid PIN: Brass(CuZn)
  - Surface of solder tail: Tin plated
  - Insulator(housing): Thermoplastic (UL94V-0)

- Electrical:
- |                          |                  |       |       |       |
|--------------------------|------------------|-------|-------|-------|
|                          | UL               | CSA   | VDE   | TUV   |
| ● Voltage rating:        | 300V             | 300V  | 300V  | 300V  |
| ● Current rating:        | 10A              | 10A   | 12A   | 15A   |
| ● Withstanding Voltage:  | 1.6KV            | 1.6KV | 2.5KV | 2.5KV |
| ● Operating temperature: | -30°C to +105°C  |       |       |       |
| ● Soldering temperature: | 250°C±10°C/5 Sec |       |       |       |
| ● Safety Approval:       |                  |       |       |       |
- RoHS Compliant



N = Number of contact



PART NUMBER:

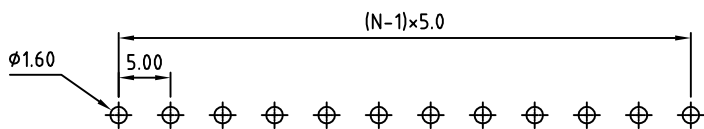
OSTOPXX0000

No. of Poles  
02: Poles  
... ..  
24: Poles

- Dim L Length
- 0 12.5mm (φ1.3 - (Dim A = 3.5) - STANDARD
  - 1 13.0mm (Upφ1.3 Downφ1.0) (Dim A = 4.3)
  - 2 12.5mm (Upφ1.3 Downφ1.0) (Dim A = 3.5)
  - 3 11.5mm (φ1.3) (Dim A = 1.9)
  - 4 14.2mm (φ1.3) (Dim A = 2.9)
  - 5 17.5mm (φ1.3) (Dim A = 3.5)
  - 6 20.0mm (φ1.3) (Dim A = 3.5)
  - 7 18.0mm (Upφ1.3 Downφ1.0) (Dim A = 3.5)
  - 8 16.2mm (Upφ1.3 Downφ1.0) (Dim A = 3.5)
  - 9 16.5mm (φ1.3) (Dim A = 3.5)
  - F 12.5x8.8mm Bent pin (φ1.3)
  - H 25.5mm (φ1.3) (Dim A = 3.5)
  - J 13.0mm pin (φ1.3) (Dim A = 3.5)
  - K 12.0mm (UPφ1.3 DOWN φ1.0) Round Pin

non-standard may require MOQ

P.C.B. LAYOUT



THESE DRAWINGS AND SPECIFICATIONS ARE THE PROPERTY OF ON-SHORE TECHNOLOGY, INC. AND SHALL NOT BE REPRODUCED, COPIED OR USED IN ANY MANNER WITHOUT THE PRIOR WRITTEN CONSENT OF ON-SHORE TECHNOLOGY, INC.



TITLE		OSTOP 5.0mm Series 2p-24p			
PART NO.	OSTOPXX0000	DWG NO.	OSTOPXX0000.DWG		
APPROVED	CHECKED	DESIGNED	DRAWN	CUST NO.	Tolerance
Shi Jun 2006.10.30	Shi Jun 2006.10.30	Tony 2006.10.30	Tony 2006.10.30		X. ±0.50 X.X ±0.30 X.XX ±0.10 X° ±1°
SHEET: 01/01				REV: E	UNIT: mm SCALE: NONE