

DATA DISPLAY PRODUCTS (DDP) PROPRIETARY INFORMATION. DO NOT REPRODUCE, COPY, OR USE WITHOUT EXPRESS WRITTEN PERMISSION. COPYRIGHT DATA DISPLAY PRODUCTS.

REV.	DATE	BY	DESCRIPTION
1	010711	LC	PRELIMINARY

503199

# ELECTRO-OPTICAL CHARACTERISTICS

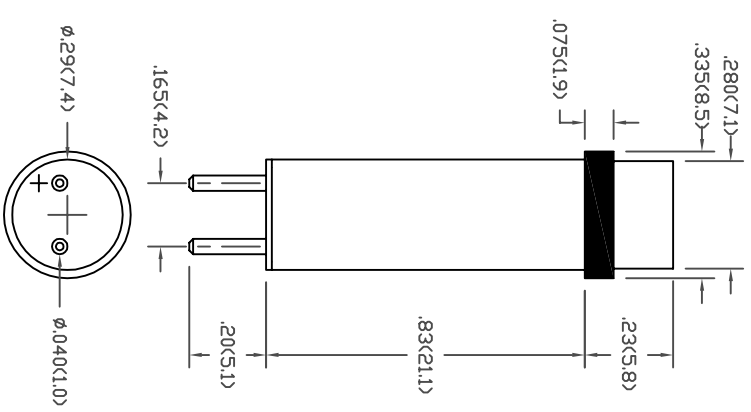
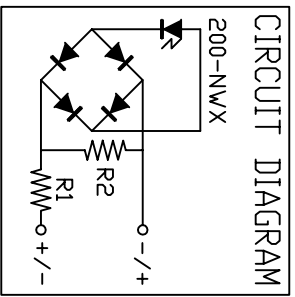
@ T<sub>a</sub> = 25°C


SYM	PARAMETER	X = LED COLOR					UNIT
		RED	AMBER	GREEN	BLUE	WHITE	
I <sub>v</sub>	TYP. LUMINOUS INTENSITY MEASURED W/O LENS @ I <sub>f</sub> =20mA	900	1300	1200	325	1100	mcd
V <sub>o</sub>	OPERATING VOLTAGE	110	110	110	110	110	VAC
I <sub>f</sub>	TYP. FORWARD CURRENT @ V <sub>f</sub> =110VAC	5.8 ~ 6.1					mA
I <sub>mx</sub>	MAX. FORWARD CURRENT @ V <sub>f</sub> =130VAC	7.1	7.1	7.1	7.1	7.1	mA
V <sub>br</sub>	REVERSE BREAKDOWN @ I <sub>r</sub> =100uA	-	-	-	-	-	V
λ <sub>pk</sub>	PEAK WAVELENGTH	635	592	520	465	-	nm
λ <sub>d</sub>	DOMINANT WAVELENGTH	626	590	525	470	-	nm

ABSOLUTE MAX. RATINGS T<sub>a</sub>=25°C

PARAMETER	VALUE			UNIT
	RED & AMB	G, B & W		
POWER DISSIPATION	923	923		mW
DERATE/°C T <sub>a</sub>	13.8	13.8		mW
OPERATING VOLTAGE	130	130		VAC
OPERATING TEMPERATURE	-40<+100	-30<+85		°C
STORAGE TEMPERATURE	-40<+120	-40<+100		°C

- REMARKS:
- Dimensions are in inches(mm).
  - The lens is water-clear with a fresnel pattern.
  - This device is immune to peak noise current of 3mA.
  - Caution: GAIN LEDs are class 1 ESD sensitive (MIL-STD-1686). Exceeding absolute maximum ratings may cause damage to, or possibly result in catastrophic failure of these devices. Use appropriate ESD precautions during handling and operation.
  - For 200-NW LED chromaticity coordinate range, see drawing #502590.





**Data Display Products**

445 S. DOUGLAS ST., EL SEGUNDO, CA. 90245 (310)640-0442 FAX: (310)640-7639

DATE:	010711	DWN BY:	LC	CHK'D BY:		APPR'V'D BY:	
LAST REV. DATE:	-	REV LEVEL	1	MATERIAL:			

TITLE	120PCLS-NWX							
SCALE:	NONE	TOL:	.XX(X)	.XXX(XXX)	ANG.	-	DWG NUMBER:	503199