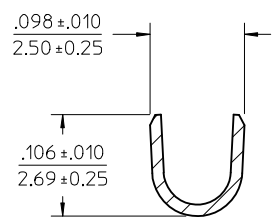


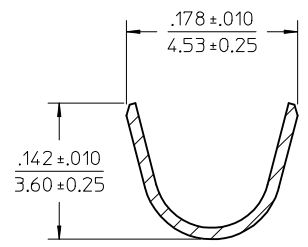
CARRIER STRIP PROGRESSION

NOTES:

1. MATERIAL: C26000 BRASS.
2. FINISH: 20 MICRINCH (0.5 MICROMETER) MINIMUM HOT TIN DIP OVERALL.
3. PRODUCT SPECIFICATION: PS-43374-001
4. PACKAGING: TERMINALS WOUND ON 24" REELS WITH PAPER INTERLEAF.
5. THIS TERMINAL FOR USE WITH 18-20 AWG STRANDED WIRE, UL 1007 OR UL 1015 STYLES, .071-.112 INSULATION DIAMETER. FOR FURTHER INFORMATION REFER TO MOLEX APPLICATION TOOLING SPECIFICATION.
6. TERMINAL MATES TO .125/(3.18 WIDE X .020/(0.51) THICK FLAT BLADE TERMINALS OR MOLEX 43178 SERIES CRIMP TERMINALS.



SECTION Y-Y
CONDUCTOR CRIMP



SECTION X-X
INSULATION CRIMP

CORRECT P/SPECS EC NO: UCP2013-3828 DRAWN:ELHAG 2013/03/09 CHKD:JBELL 2013/03/09 APPR:FSMITH 2013/04/03	QUALITY SYMBOLS	GENERAL TOLERANCES (UNLESS SPECIFIED)	DIMENSION STYLE		SCALE	DESIGN UNITS	THIRD ANGLE PROJECTION
	▽=0		mm	INCH	10:1	INCH	
	▽=0		DRAWN BY DATE		TITLE		
	REV		CHECKED BY DATE		MATERIAL NO. DOCUMENT NO.		

4 PLACES ± --- ± ---	BWIRKUS 09-09-2009
3 PLACES ± --- ± .005	CHECKED BY DATE
2 PLACES ± 0.13 ± .010	BWIRKUS 09-09-2009
1 PLACE ± 0.25 ± ---	APPROVED BY DATE
ANGULAR ± --- °	APATEL 09-09-2009
DRAFT WHERE APPLICABLE MUST REMAIN WITHIN DIMENSIONS	

DRAWN BY DATE		TITLE	
CHECKED BY DATE		MATERIAL NO. DOCUMENT NO.	
APPROVED BY DATE		MATERIAL NO. DOCUMENT NO.	
APATEL 09-09-2009		433742001 SD-43374-301	

MATERIAL NO. DOCUMENT NO.		SHEET NO.	
433742001 SD-43374-301		1 OF 1	
THIS DRAWING CONTAINS INFORMATION THAT IS PROPRIETARY TO MOLEX INCORPORATED AND SHOULD NOT BE USED WITHOUT WRITTEN PERMISSION			