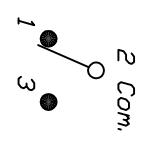


RECOMMENDED P.C.B. LAYOUT

| SWITCH FUNCTION | | |
|-----------------|--------|--------|
| POS. 1 | POS. 2 | POS. 3 |
| DN | OFF | COM |
| 2-3 | OPEN | 2-1 |

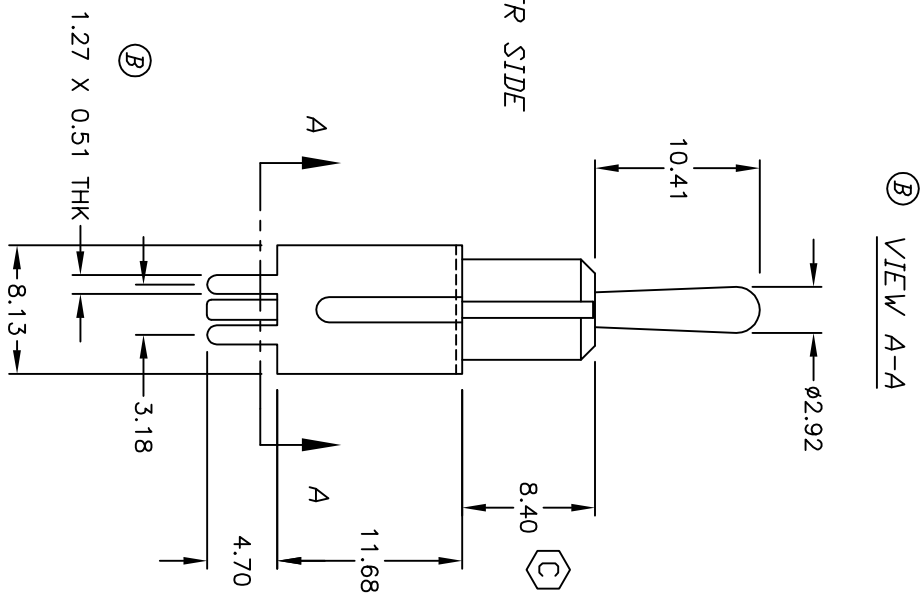
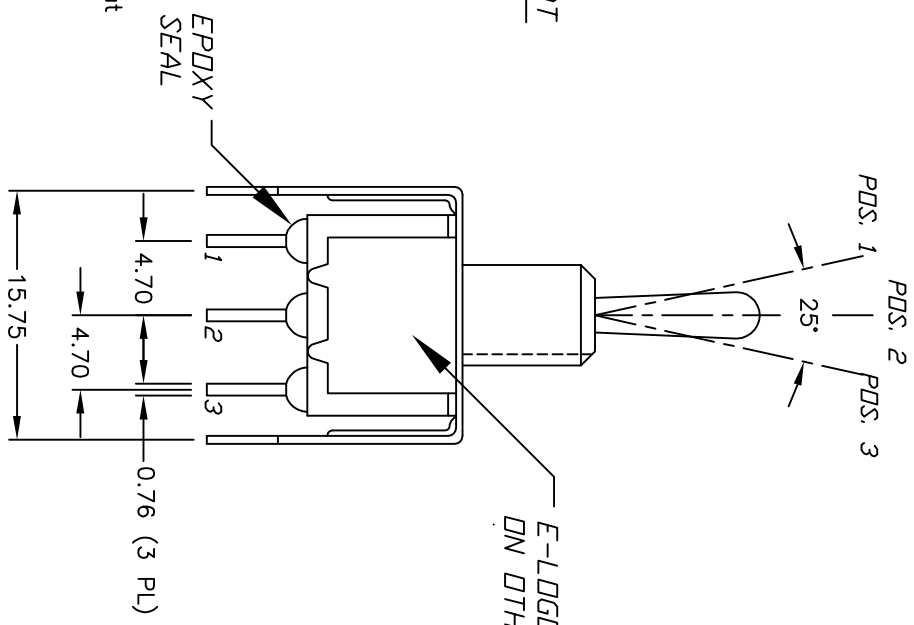
() = Momentary



CIRCUIT: SPDT

NOTES:

1. ALL DIMENSIONS IN MM
2. GENERAL TOLERANCE: X.X=±0.4
X.XX=±0.25
3. TERM. NOS. FOR REF. ONLY
4. RATING: 5A @120VAC OR 28VDC
2A @250VAC w/Resistive loads
5. FIXED TERM. & MOVING CONTACT:
Copper alloy w/SILVER plate
6. ELECTRICAL LIFE: 50,000 make-and-break cycles at full load.
7. INSULATION RESISTANCE: 1000M ohm min.
8. DIELECTRIC STRENGTH: 1000V RMS min. @sea level.
9. OPERATING TEMP.: -30°C to +85°C
10. 2002/95/EC (ROHS) COMPLIANT



| REV. | ECN NO. | DESCRIPTION | DATE | CHKD |
|------|---------|--------------------------------|---------|------|
| C | 18762 | DIM FOR BUSHING HEIGHT UPDATED | 1/11/10 | BLR |
| B | 12030 | REVISED & REDRAWN | 4/2/02 | CJB |
| A | 10724 | RELEASED FOR PRODUCTION | 7/3/03 | GLG |

| TITLE | | SCALE | | DATE | | DR | | DWG | | REV | |
|------------------------|--|-------|--|---------|--|-----|--|---------|--|-----|--|
| 100 SP-5 T1 B2 VS2 Q E | | 2:1 | | 1/11/10 | | BLR | | T114999 | | C | |



THE INFORMATION CONTAINED IN THIS DOCUMENT IS PROPRIETARY TO E-SWITCH AND IS NOT TO BE COPIED OR TRANSFERRED