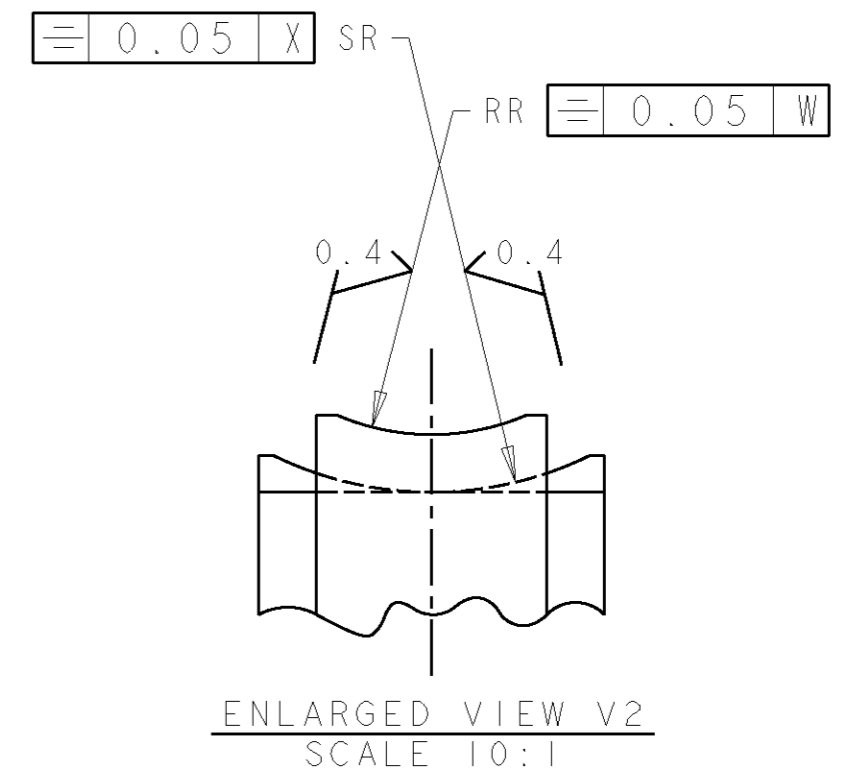
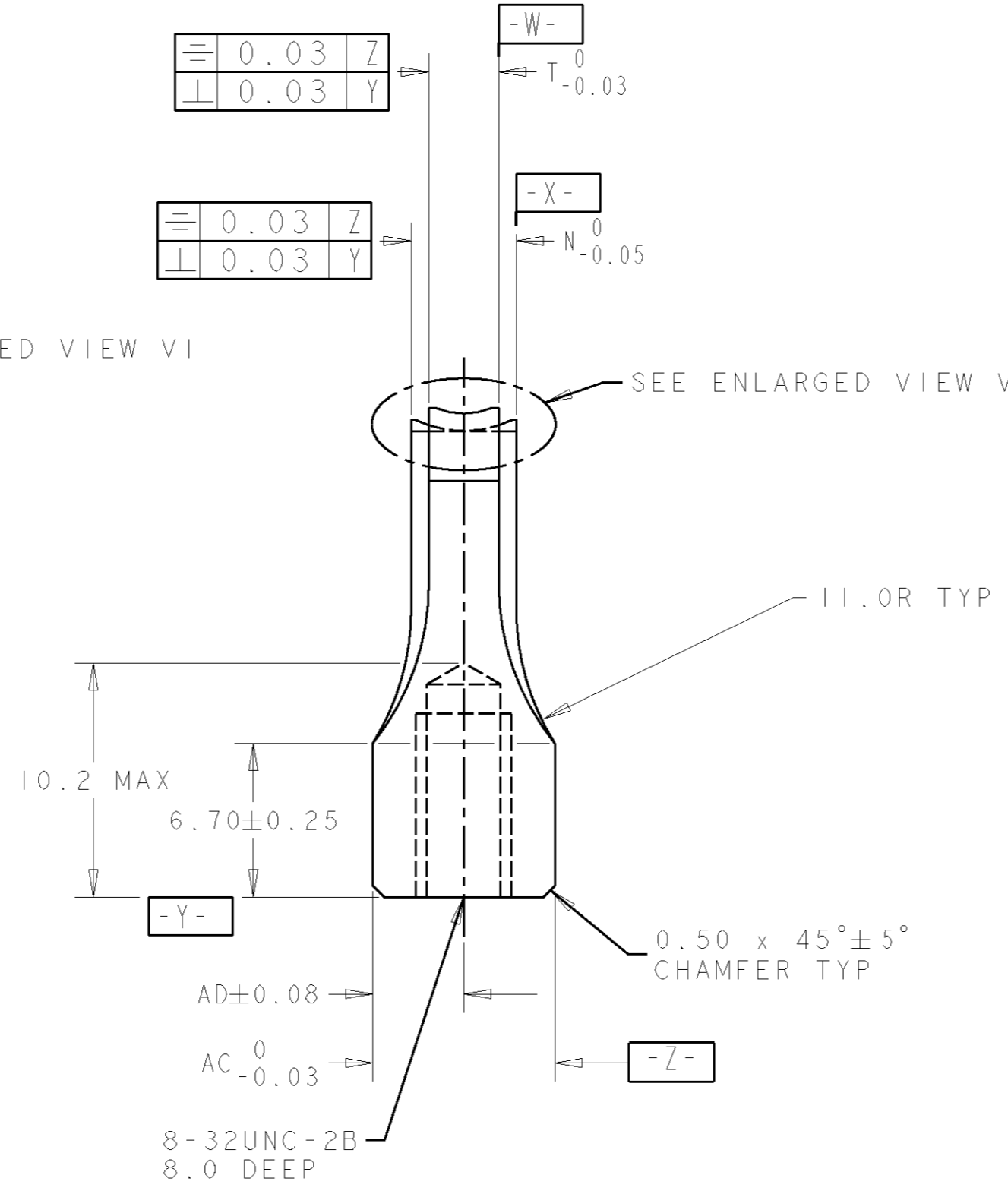
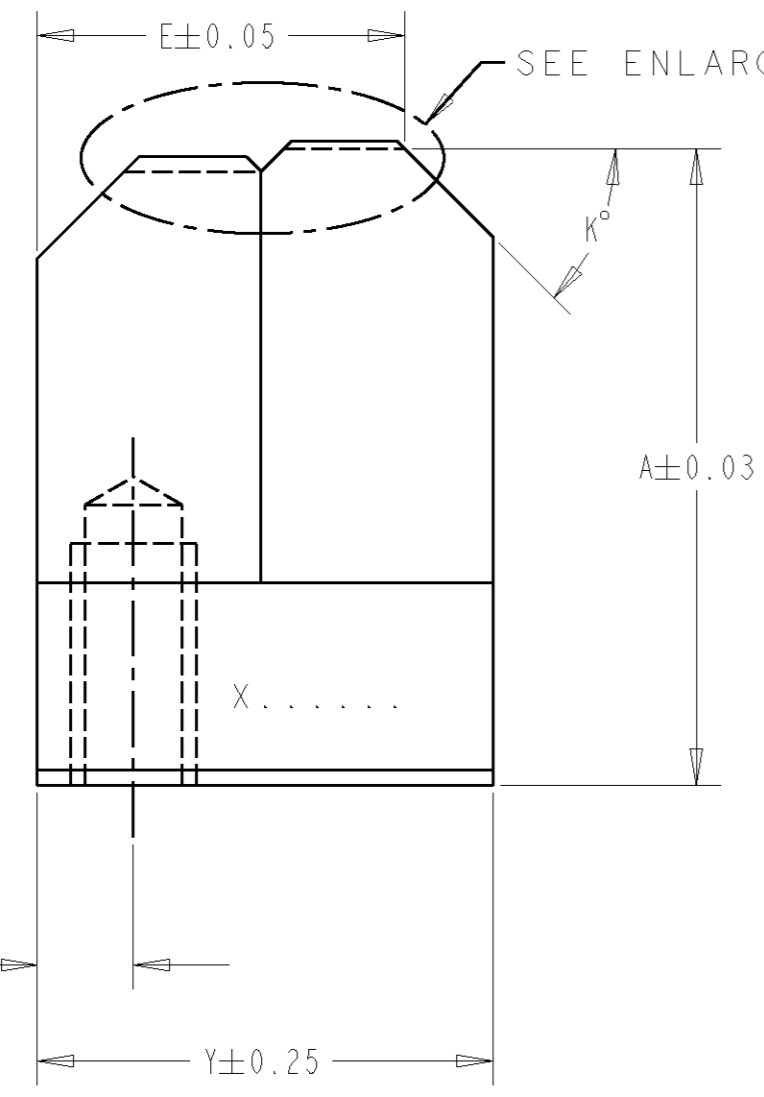
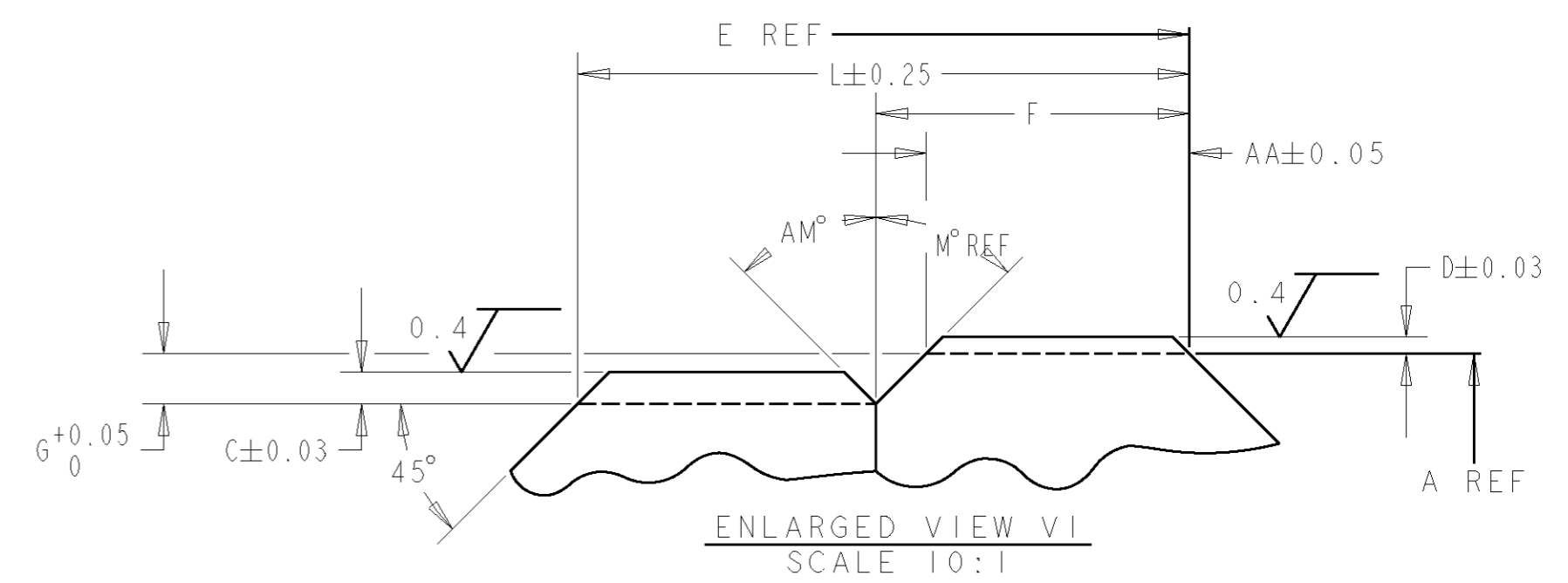
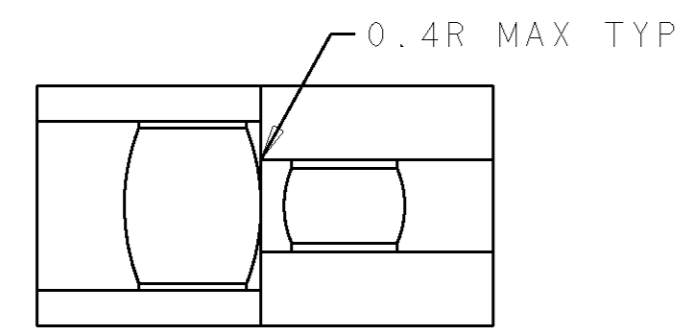


3rd ANGLE (AMERICAN) PROJECTION
DIMENSIONS IN METRIC
DO NOT SCALE PRINT

NUMBER
576258

IDENTIFY PART AS PER SPEC. 115-67-2 IN AREA X.....
FOR METHOD, REFER TO PARA 3.3 C; INCLUDE VENDOR SYMBOL, AND ENSURE PART IS DEMAGNETISED.
LEGAL, HEALTH, SAFETY AND ENVIRONMENTAL CONSTRAINTS
MAY APPLY TO THE MATERIALS SPECIFIED ON THIS DOCUMENT REFER TO ENGINEERING MATERIAL SPEC. 100-3012



NOTES:
1. TOP EDGES TO REMAIN SHARP, REMOVE BURRS ONLY.

REV	ENGINEER	ECN	DATE	REV	ENGINEER	ECN	DATE	SHT 1 OF 2	LOC E	A2	NUMBER	REV Y
-	-	-	-	K	S. J. MASSIE	T3032	24-02-93					
Y	M. CLIFFORD	EB00-0232-99	21-04-99	J	S. J. MASSIE	T3012	04-02-93					
W	L. J. LOFTHOUSE	EB00-0163-97	20-03-97	H	S. J. MASSIE	T2999	25-01-93					
V	L. J. LOFTHOUSE	EB00-0268-96	03-06-96	G	S. J. MASSIE	T2933	29-10-92					
U	L. J. LOFTHOUSE	EB00-0120-96	19-03-96	F	S. J. MASSIE	T2923	22-10-92					
T	R. M. SQUIRES	T3554	23-06-95	E	S. J. MASSIE	T2911	07-10-92					
S	R. M. SQUIRES	T3458	29-09-94	D	S. J. MASSIE	T2792	19-06-92					
R	S. J. MASSIE	T3402	26-05-94	C	S. J. MASSIE	T2735	21-04-92					
P	S. J. MASSIE	T3261	12-04-94	B	S. J. MASSIE	T2661	14-02-92					
N	S. J. MASSIE	T3229	10-08-93	A	S. J. MASSIE	T2642	31-01-92					
M	S. J. MASSIE	T3149	13-05-93	O	S. J. MASSIE	T2639	22-01-92					
L	S. J. MASSIE	T3097	01-04-93	I	S. J. MASSIE	AS DRN	26-09-91					

REMOVE BURRS, BREAK SHARP EDGES 0.38R MAX.
UNLESS OTHERWISE SPECIFIED } 0.0 = ± 0.51 0.000 = ± 0.013 0.8
0.00 = ± 0.13 ANGLES = ± 0° 30'

AMP TERMINAL HOUSE, STANMORE, MIDDX.
of Great Britain Ltd.

ANVIL, COMBINATION

LOC E A2 NUMBER 576258

IDENTIFY PART AS PER SPEC. 115-67-2 IN X.....
 FOR METHOD, REFER TO PARA 3.3 C; INCLUDE VENDOR
 SYMBOL, AND ENSURE PART IS DEMAGNETISED.
 LEGAL, HEALTH, SAFETY AND ENVIRONMENTAL CONSTRAINTS
 MAY APPLY TO THE MATERIALS SPECIFIED ON THIS
 DOCUMENT REFER TO ENGINEERING MATERIAL SPEC. 100-3012

576258 NUMBER

3rd ANGLE (AMERICAN) PROJECTION
 DIMENSIONS IN METRIC
 DO NOT SCALE PRINT

This information is confidential and is disclosed to you on condition that no further disclosure is made by you to other than AMP Personnel without written authorization from AMP of GREAT BRITAIN LTD.

PART NO	REV	T	N	A	G	AA	F	L	E	Y	AM°	M°	K°	D	RR	C	SR	AC	AD	FIRST USED
576258-1	0	2.03	3.56	21.06	0.40	4.85	5.23	8.84	12.50	15.06	45°	43°	45°	0.15	2.29	0.86	1.78	7.92	3.96	9-576533-2
576258-2	J	3.56	6.35	21.06	0.30	4.38	4.90	9.42	12.14	15.06	#	60°	45°	0.28	4.75	#	#	7.92	3.96	1-576074-0
576258-3	B	2.03	3.56	21.06	#	#	4.70	8.23	12.14	15.06	45°	45°	45°	0.15	2.29	0.28	4.75	7.92	3.96	576590-5
576258-4	C	2.79	3.81	21.06	0.50	4.06	4.55	7.69	12.50	15.06	30°	44°	45°	0.23	3.18	0.87	2.00	7.92	3.96	9-576533-3
576258-5	D	2.29	3.56	20.55	0.51	3.56	4.45	7.92	12.14	15.06	30°	60°	45°	0.18	2.29	0.82	1.84	7.92	3.96	1-576527-7
576258-6	D	2.79	3.94	21.06	#	#	5.08	9.65	11.89	15.06	45°	#	45°	0.20	3.18	0.50	3.18	7.92	3.96	576519-6
576258-7	E	2.54	3.81	21.06	0.38	4.34	5.00	8.89	12.09	15.00	45°	60°	45°	0.18	3.18	0.30	4.75	7.92	3.96	2-576074-1
576258-8	H	6.35	8.89	20.32	1.02	5.84	7.59	13.16	13.67	16.59	30°	60°	45°	0.46	7.92	1.07	8.89	9.53	4.76	576077-4
576258-9	G	3.05	4.57	21.06	#	#	5.66	10.31	13.54	15.06	45°	#	45°	0.18	3.18	1.16	2.36	7.92	3.96	576540-3
1-576258-0	K	2.79	3.94	21.06	#	#	6.92	10.73	15.00	18.00	45°	45°	45°	0.23	3.18	0.75	2.34	7.92	3.96	576009-9
1-576258-1	L	2.29	3.81	20.55	0.51	3.60	3.89	9.65	12.00	15.06	30°	30°	45°	0.18	2.29	0.94	1.93	7.92	3.96	3-576074-3
1-576258-2	M	2.29	4.06	21.06	0.38	3.30	3.96	7.62	12.14	15.06	30°	60°	45°	0.18	2.29	0.36	4.75	7.92	3.96	2-576074-8
1-576258-3	N	2.79	6.25	21.06	0.38	4.98	5.64	10.62	12.14	15.06	#	60°	45°	0.23	3.18	#	#	7.92	3.96	576520-3
1-576258-4	P	2.79	4.32	21.06	0.38	4.88	5.26	9.53	11.89	15.06	45°	45°	45°	0.23	3.18	1.02	2.30	7.92	3.96	4-576074-9
1-576258-5	R	3.56	5.33	20.32	0.76	4.83	5.59	11.18	11.89	15.06	45°	45°	45°	0.28	4.75	1.45	2.74	7.92	3.96	1-576042-6
1-576258-6	S	2.79	4.32	21.06	#	#	4.82	8.82	12.50	15.06	30°	#	45°	0.23	3.18	0.51	3.86	7.92	3.96	8-576019-6
1-576258-7	S	3.56	5.23	21.06	0.51	5.59	6.48	10.85	12.40	15.06	30°	60°	45°	0.25	4.75	0.53	6.35	7.92	3.96	576097-6
1-576258-8	T	4.57	6.86	21.06	0.76	5.46	6.22	11.56	12.19	15.06	#	45°	45°	0.36	4.75	1.56	4.13	7.92	3.96	3-576064-5
1-576258-9	U	4.06	5.23	21.06	0.69	4.83	6.02	11.00	12.14	15.88	30°	60°	45°	0.25	6.35	0.64	4.75	7.92	3.96	6-576074
2-576258-0	V	3.05	4.47	21.06	0.40	4.70	5.41	11.05	12.14	15.06	30°	60°	45°	0.25	3.18	1.18	2.34	7.92	3.96	7-576074-6
2-576258-1	W	3.56	4.06	21.06	0.40	4.45	4.83	10.50	12.14	15.0	30°	30°	45°	0.48	1.07	1.04	2.03	7.92	3.96	6-576019-5
2-576258-2	Y	2.29	3.30	21.06	0.63	3.17	3.81	9.53	11.89	15.06	45°	45°	30°	0.18	2.29	0.83	1.59	7.92	3.96	1157041-1
2-576258-3																				
2-576258-4																				
2-576258-5																				
2-576258-6																				
2-576258-7																				
2-576258-8																				
2-576258-9																				
3-576258-0																				
3-576258-1																				
3-576258-2																				
3-576258-3																				

SEE SHEET ONE

MATERIAL		HEAT TREAT		FINISH	
100-43		111-43 Rc 56-58		112-157	
UNLESS OTHERWISE SPECIFIED		REMOVE BURRS, BREAK SHARP EDGES 0.38R MAX.		0.8	
		0.0 = ± 0.51		0.000 = ± 0.013	
		0.00 = ± 0.13		ANGLES = ± 0° 30'	
FIRST USED SEE TABLE	SCALE #				
DR. S. J. MASSIE	10/91				
CHK. J. GARDNER	01/92				
APP. F. A. B.	01/92				
ANVIL, COMBINATION					
REV	ENGINEER	ECN	DATE	SHT 2 OF 2	LOC E A2 NUMBER 576258 REV Y