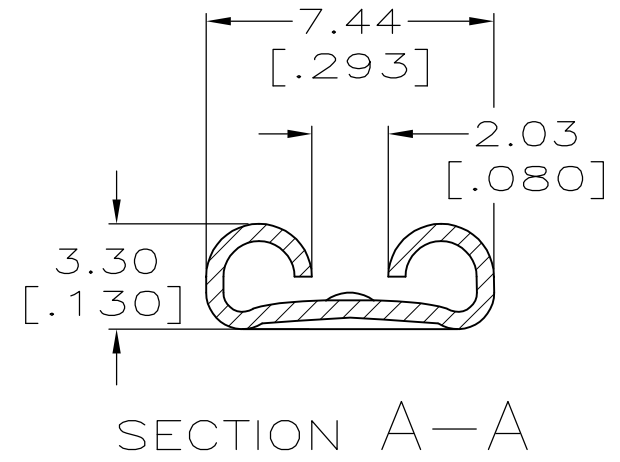
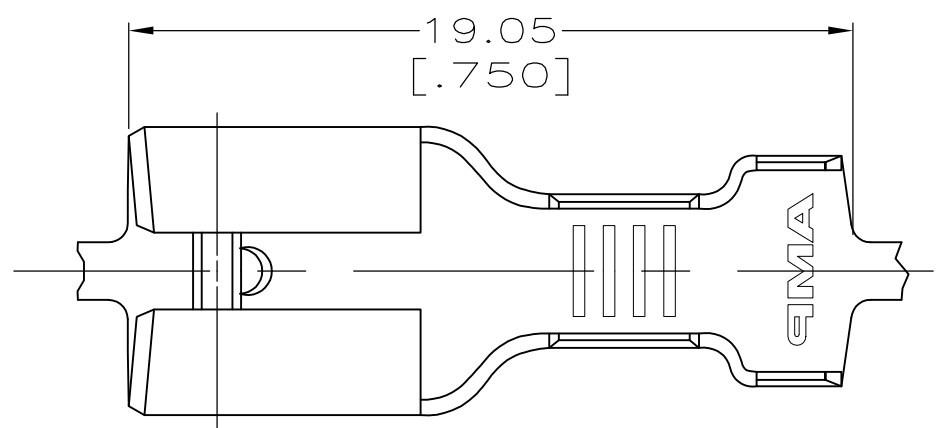
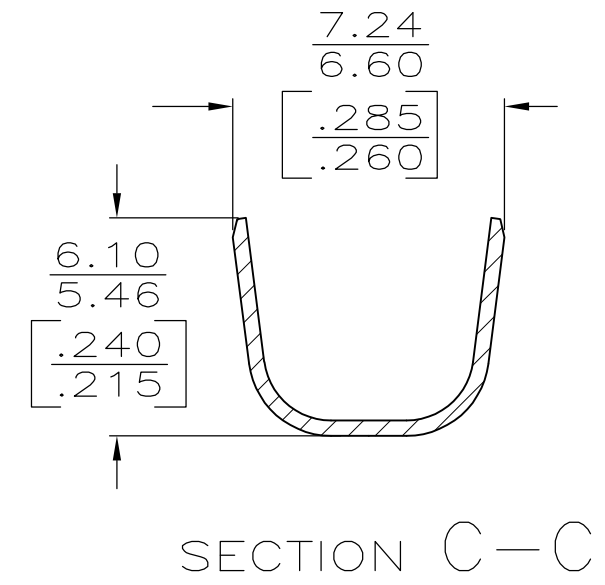
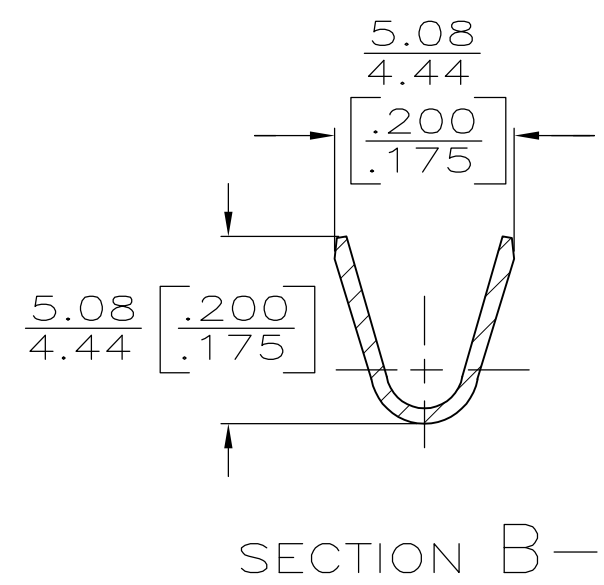
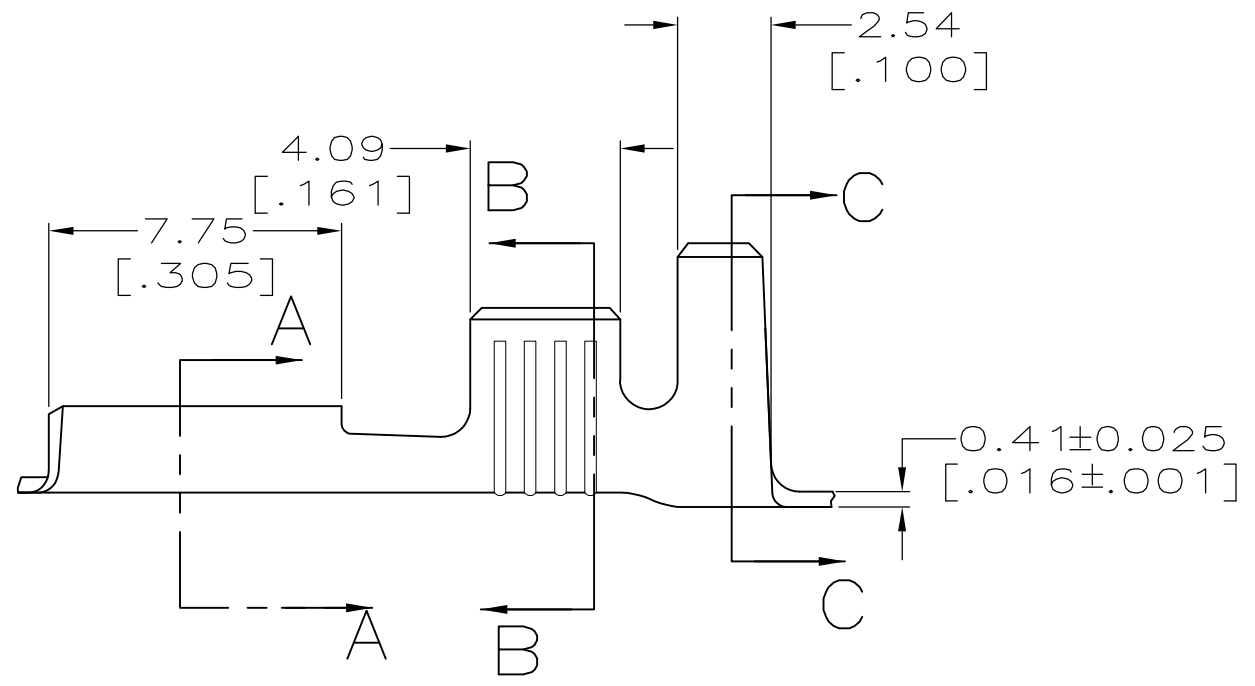


THIS DRAWING IS UNPUBLISHED. RELEASED FOR PUBLICATION  
 © COPYRIGHT - By - ALL RIGHTS RESERVED.

LOC	DIST	REVISIONS			
P	LTR	DESCRIPTION	DATE	DWN	APVD
AF	50	C	REVISED PER ECR-12-013518	24NOV12	KH PD



- 1 CONTINUOUS STRIP ON REELS.
- 2 ACCEPTS WIRE SIZE [#16-#12 OR TWO #16'S].
- 3 INSULATION RANGE TO BE 4.06-5.33 [.160-.210] OR TWO 3.30 [.130] MAX DIA.
- 4 MATING TAB THK. TO BE 0.81±0.025 [.032±.001]
- 5 0.002032 [.000080] MIN TIN PLATE
- 6 PRELIMINARY - NOT FOR PRODUCTION.



5	6 63896-2
-	63896-1
Finish	Part Number

THIS DRAWING IS A CONTROLLED DOCUMENT.		DWN	JR RUTH	6/12/96	TE Connectivity RECEPTACLE, FASTON, 6.35 [.250] SERIES								
DIMENSIONS: mm [INCHES]		CHK	MS FEHER	6/12/96				NAME					
TOLERANCES UNLESS OTHERWISE SPECIFIED:		APVD	J GILLESPIE	6/12/96				PRODUCT SPEC					
0 PLC ± - 1 PLC ± - 2 PLC ± 0.38 [.015] 3 PLC ± - 4 PLC ± - ANGLES ± -		APPLICATION SPEC		114-2036									
MATERIAL	BRASS	FINISH	SEE TABLE	WEIGHT	-	SIZE	A3	CAGE CODE	00779	DRAWING NO	C-63896	RESTRICTED TO	-
CUSTOMER DRAWING				SCALE	5:1	SHEET	1 OF 1	REV	C				