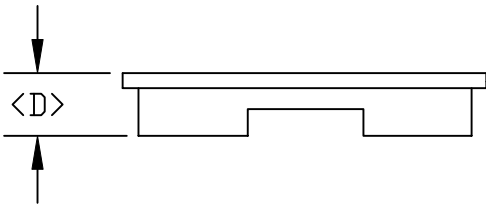
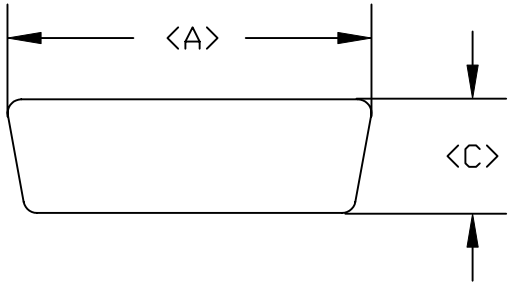


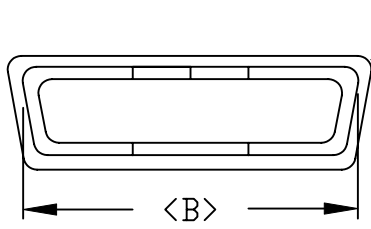
DESCRIPTION: DUST COVER FEMALE

DIMENSIONS

| | A | B | C | D |
|----|-------|-------|-------|------|
| 9 | .887 | .783 | .520 | .262 |
| | 22.53 | 19.88 | 13.21 | 6.65 |
| 15 | 1.222 | 1.113 | .520 | .262 |
| | 31.03 | 28.27 | 13.21 | 6.65 |
| 25 | 1.752 | 1.645 | .520 | .262 |
| | 44.51 | 41.79 | 13.21 | 6.65 |
| 37 | 2.420 | 2.310 | .520 | .283 |
| | 61.47 | 58.67 | 13.21 | 7.19 |
| 50 | 2.154 | 2.154 | .543 | .315 |
| | 54.70 | 54.7 | 13.80 | 8.00 |




50 POSITION HAS NO LIP



50 POSITION HAS NO LIP

| | PART NUMBER |
|----|-----------------|
| 09 | 160-000-209-000 |
| 15 | 160-000-215-000 |
| 25 | 160-000-225-000 |
| 37 | 160-000-237-000 |
| 50 | 160-000-250-000 |

MATERIAL:
PLASTIC: PE

| | | | | |
|--|---|--|--------------------------------|----------------------------|
|  | THESE DRAWINGS AND SPECIFICATIONS ARE THE PROPERTY OF NorComp AND SHALL NOT BE REPRODUCED, COPIED OR USED AS THE BASIS FOR THE MANUFACTURE OF SALE OF APPARATUS WITHOUT WRITTEN PERMISSION. | | DRAWN: PAM JENKINS | DATE: 8-5-98 |
| | <h1>NorComp</h1> | | | CHECKED: |
| SCALE: | | | | SHEET 1 OF 1 |
| | | | DWG NO. 160-000-2XX-000 | |