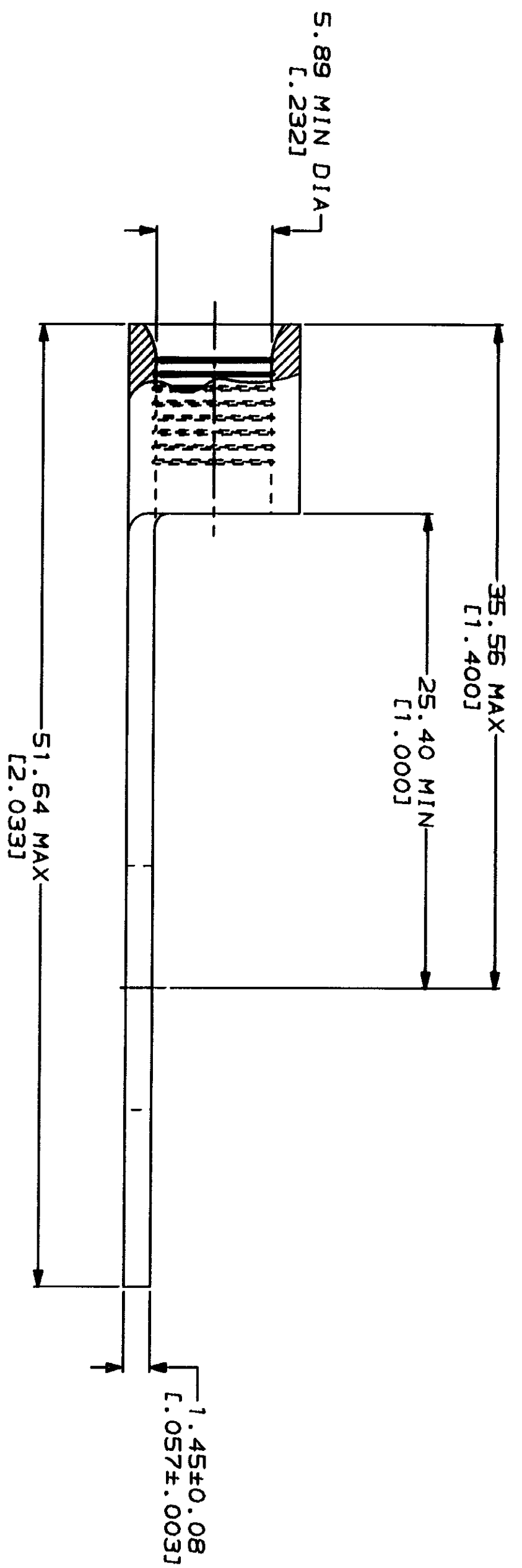


**METRIOR**  
DIMENSIONS LISTED IN mm [ INCHES ]

WIRE RANGE	E13288 Listed
6 AWG SOLID OR STRANDED	6 AWG STRANDED
6 AWG SOLID OR STRANDED	MILITARY P/N AND CLASS
6 AWG SOLID OR STRANDED	NOT APPLICABLE

△ STAMP AMP SIZE APPROX AS SHOWN



AMP INCORPORATED  
CUSTOMER SERVICE SYSTEMS

FOR ADDITIONAL  
PRODUCT INFORMATION OR  
COPIES OF DRAWINGS  
AND TECHNICAL DOCUMENTS

FOR APPLICATION  
TOOLING INFORMATION  
FOR ORDER ENTRY

PRODUCT INFORMATION CENTER  
1-800-522-6752

TOOLING ASSISTANCE CENTER  
1-800-722-1111

1-800-526-5142

MAX RECOMMENDED OPERATING  
TEMPERATURE:  
170°C MAX

VOLTAGE RATING:  
NOT APPLICABLE

WIRE CROSS SECTIONAL AREA RANGE:  
10.5-16.8mm<sup>2</sup> [20,800-33,100] CIR MILS  
SOLID OR STRANDED

DO NOT SCALE PRINT.  
UNLESS SPECIFIED  
DIMENSIONS ARE IN MILLIMETERS  
DIMENSIONS IN INCHES ARE  
FOR INFORMATION ONLY

FINISH  
TIN PLATE  
0.00254 [1.000100] MIN  
TKM PER MIL-T-10727

DR 3-24-93  
TA-SHOWMAN

CHK 3-24-93  
DUMAS

APP 3-24-93  
JL MCKLEY

PRODUCT SPEC

APPLICATION SPEC

500	LOOSE PIECE, BOX	36808-1
-	LOOSE PIECE	36808
QTY	PACKAGE TYPE	PART NO

**AMP** AMP Incorporated  
Harrisburg, PA 17105-3608

TERMINAL, RING TONGUE,  
SOLID STRAND™

SIZE G  
CAGE CODE 00779  
DRAWING NO G-36808

CUSTOMER DRAWING