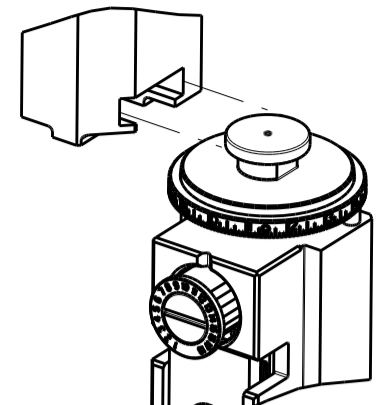



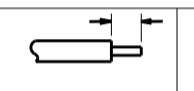















ATLANTIC VERSION TERMINATOR INTERFACE ADAPTER	PART NUMBER	REVISION	DESCRIPTION	FEED TYPE	APPLICATOR STYLE CONVERSION CHART						
					CONVERT TO	PART NUMBERS REQUIRED					
	2150466-2	C	FINE CRIMP HEIGHT ADJUST	PNEUMATIC	-	-	-	-	-	-	
	2150466-5	C	FINE CRIMP HEIGHT ADJUST	SERVO LATCH PLATE 	SERVO LATCH PLATE	2119951-1	1901697-1	8-2150466-5	-	-	2168400-7 (QUANTITY 2)
					SMART APPLICATOR	2161326-1	-	8-2150466-4	-	-	-
	2150466-6	C	NON-CRIMP HEIGHT ADJUST	SERVO LATCH PLATE 	-	-	-	-	-	-	
	2150466-7	C	FINE CRIMP HEIGHT ADJUST	NONE	-	-	-	-	-	-	
7-2150466-7	C	CRIMP TOOLING KIT	-	-	-	-	-	-	-		

APPLICATOR DATA		
CRIMP	SIZE	TYPE
WIRE	3.00 mm [.118]	F
INSUL	4.00 mm [.157]	F
APPL INSTRUCTIONS 408-10390 		

TERMINAL DATA: SAMSUNG TERMINAL SAMSUNG CRIMP SPECIFICATION			
TERMINAL NAME: TERMINAL-RECEPTACLE(S48F)			
WIRE STRIP LENGTH 	INSULATION DIAMETER RANGE 		
TERMINAL APPLICATION SPECIFICATION 	SAMSUNG TOOLING DRAWING L TYPE		
TERMINALS APPLIED 			
TE TERMINAL	SAMSUNG TERMINAL	TE TERMINAL	SAMSUNG TERMINAL
2113583-1	35454-8902	2113583-2	DB65-00307B

WIRE SIZE	CRIMP HEIGHT mm [INCH]	CRIMP HEIGHT REFERENCE SETTING
1.0mm + 1.1mm SOLID 	1.84+/-0.04 [.072+/- .002] 	6.0 


-  RECOMMENDED SPARE PARTS
-  GREASE BEARING SURFACES LIGHTLY
- 3. LUBRICATE DAILY PER THE APPLICATOR INSTRUCTION SHEET SUPPLIED WITH THE APPLICATOR.
-  APPLICATOR SPECIFIC DATA TO BE ENTERED INTO BLANK MEMORY CHIP AT ASSEMBLY. SEE BELOW FOR PART NUMBER:
 PNEUMATIC FEED WITH "SMART APPLICATOR" CONVERSION: 8-2150466-4
 SERVO FEED WITH "FINE CRIMP HEIGHT ADJUST": 8-2150466-5
 SERVO FEED WITH "NON-CRIMP HEIGHT ADJUST": 8-2150466-6
- 5. ADJUSTMENT OF THE STRIPPER MAY BE REQUIRED WHEN MOVING THE APPLICATOR BETWEEN BENCH AND LEADMAKER APPLICATIONS.
-  APPLY PART NUMBER 1-23419-5 LOCTITE TO THREADS OF ITEM 62. APPLY PART NUMBER 2-23419-6 LOCTITE TO THREADS OF ITEM 242. FOR -6 ONLY APPLY PART NUMBER 1-23419-5 LOCTITE TO THREADS OF ITEM 37.
-  GREASE THREADS, GROOVE AND O-RING ON ITEMS 35 & 252.
-  MAGNET, ITEM 166 MUST BE ORIENTED CORRECTLY IN ORDER TO PROPERLY ACTUATE THE COUNTER.
-  CRIMP HEIGHT REFERENCE SETTING WAS THE SETTING USED WHEN THE APPLICATOR WAS QUALIFIED AT THE FACTORY. ADJUSTMENT MAY BE NECESSARY WHEN RUNNING APPLICATOR IN THE FIELD.
-  TERMINAL PITCH NOT COMPATIBLE WITH MECHANICAL FEED.
-  WHEN ASSEMBLING -6 NON-CRIMP HEIGHT ADJUST APPLICATOR USE SHIM PACK 2119957-2 TO ALIGN APPLICATOR'S MAXIMUM WIRE CRIMP HEIGHT AT NORMAL TERMINATOR SHUT HEIGHT
-  CUT TO LENGTH AT ASSEMBLY.
- APPLICATOR APPLIES SOLID WIRE ONLY.
- TERMINAL LUBRICANT IS RECOMMENDED.

***WARNING**
 ON INSTALLATION, SET WIRE DISC, ITEM 40 TO LARGEST WIRE SIZE SETTING. USE OF SETTINGS BELOW MINIMUM REQUIRED CRIMP HEIGHT SETTING WILL CAUSE DAMAGE TO CRIMP TOOLING.

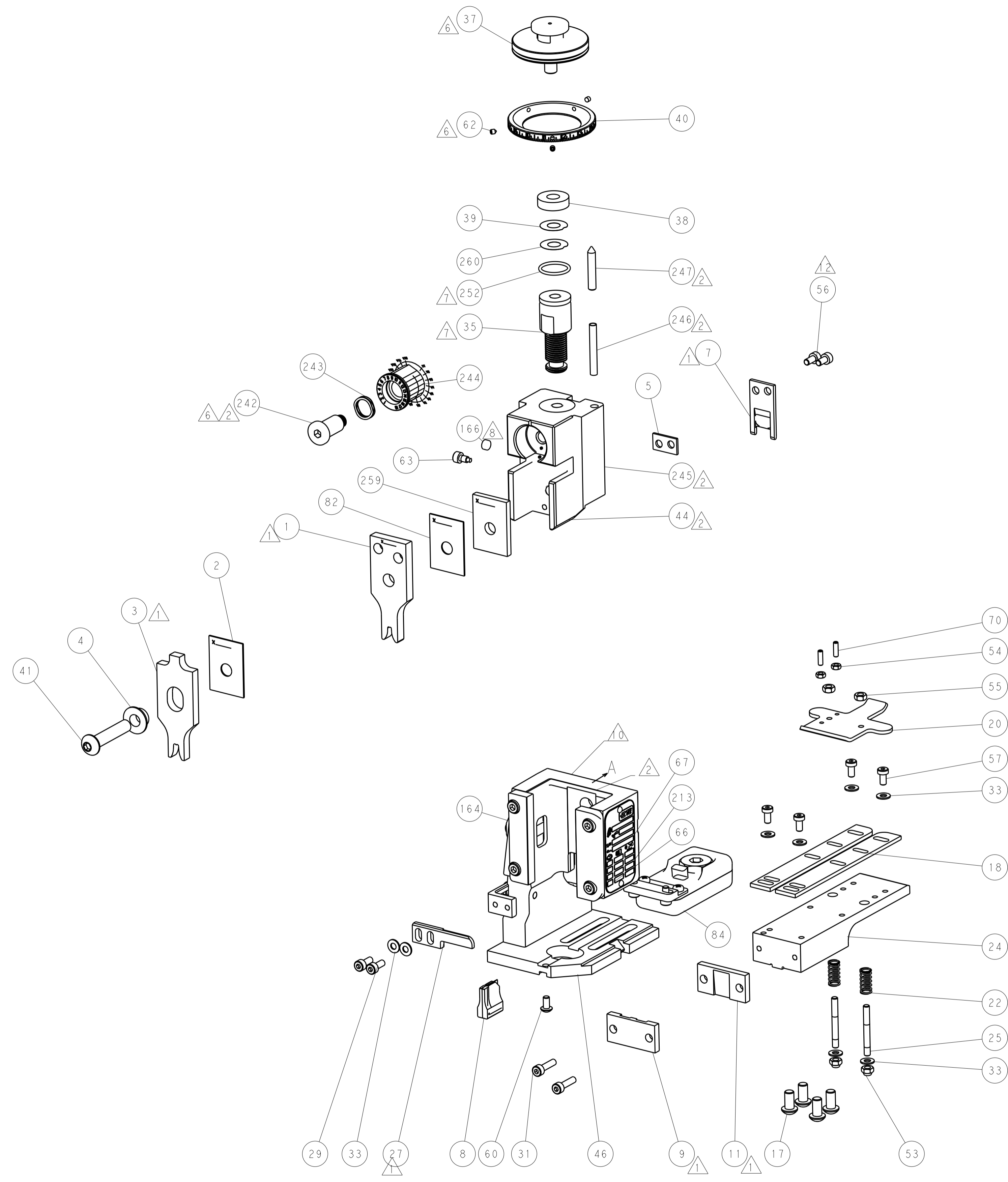
ATLANTIC VERSION
 Shown on sheets 1 of 4 & 2 of 4
 (Pacific version shown on sheets 3 of 4 & 4 of 4)

SET UP GAUGE	LOC	DIST	REVISIONS			
2119599-2	A	66	REV	DATE	BY	APPD
			C	16JUN2015	MR	TE

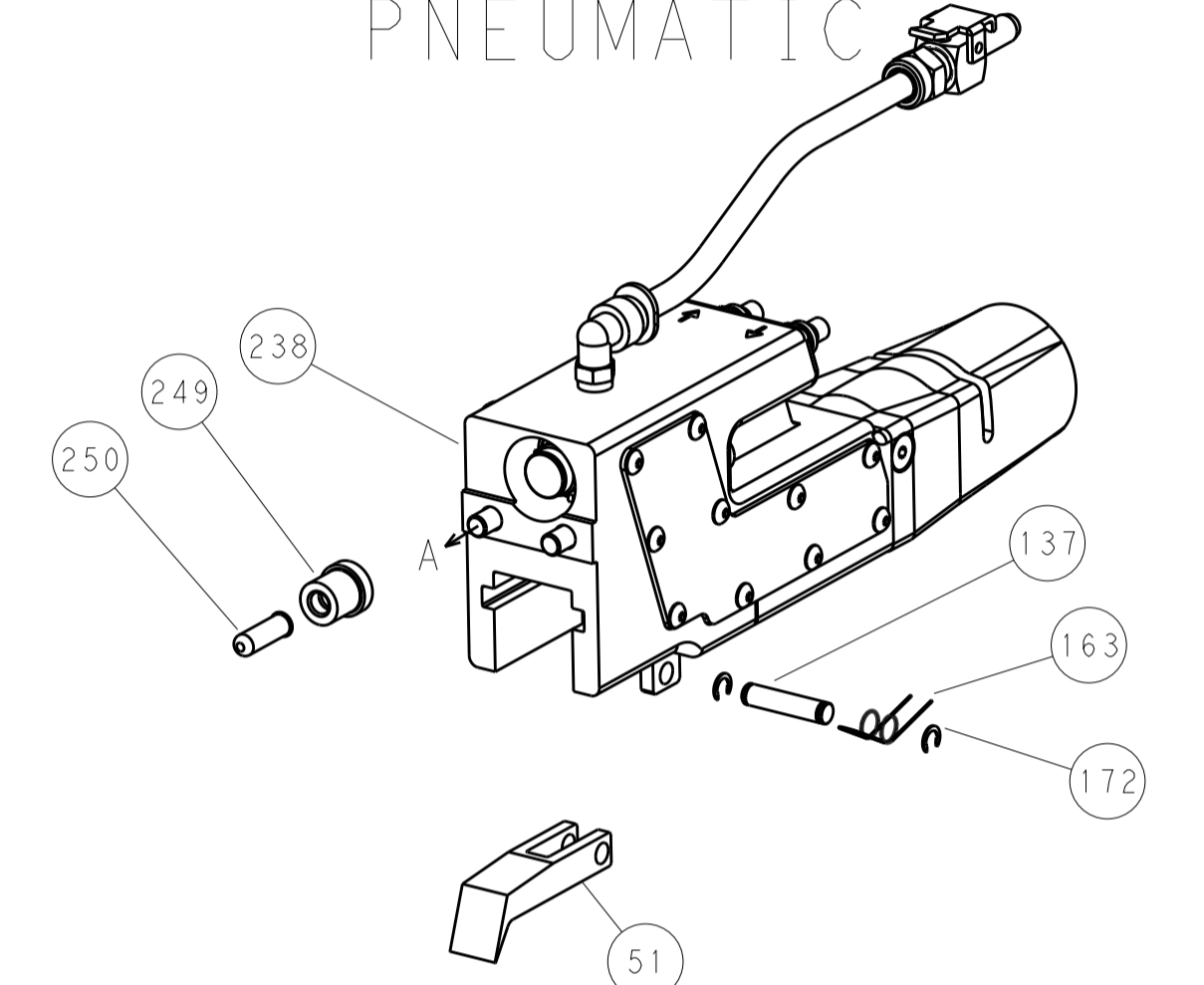
REV	DATE	BY	APPD	DESCRIPTION	DATE	BY	APPD
-	-	1	-	2119957-2	APPLICATOR SHIM PACK		260
-	-	1	1	1803078-3	SPACER, PRECISION		259
-	-	1	1	8-21084-0	O-RING, .676 ID, .070 DIA. MAT.		252
-	-	-	-	2119640-1	PUSH ROD, AIR FEED		250
-	-	-	-	2079988-1	BUSHING, LCH5-12, MISUMI		249
-	-	-	-	2119641-1	FEED CAM, AIR FEED		248
-	-	1	-	2119798-1	DETENT PIN		247
-	-	1	-	1-22279-3	SPRING, COMPRESSION		246
-	-	1	-	2161315-1	RAM, STEPPED, AMP STYL, EF, NON-ADJUST		245
-	-	1	1	2119082-8	CAM, SNAIL, INSULATION ADJUSTMENT		244
-	-	1	1	2079764-1	WASHER, WAVE SPRING, CREST-TO-CREST		243
-	-	1	1	2119083-1	RETAINER, INSULATION DIAL		242
-	-	-	-	2168400-7	SHCS, LOW HEAD, RoHS, M5 X 10		240
-	-	-	-	2119580-1	MECHANICAL FEED ASSEMBLY		239
-	-	-	-	2063440-2	AIR FEED MODULE		238
-	-	1	1	2119740-2	TAG, IDENTIFICATION		213
-	-	REFREF	-	1901697-1	FEED FINGER ASSEMBLY, EF		183
-	-	-	-	21045-3	RING, RETAIN, EXTERN, 3/16 CRESCENT		172
-	-	1	1	994969-1	MAGNET, RARE EARTH HIGH ENERGY		166
-	-	REFREFREFREF	-	994970-2	COUNTER, MAGNETIC		164
-	-	-	-	240638-1	SPRING, FEED FINGER		163
-	-	-	-	3-23627-7	PIN, RETAIN, GRVD, 3/16 X .854		137
-	-	REFREF	-	SEE NOTE 4	MEMORY CHIP, PROGRAMMED		135
-	-	1	1	1633743-1	SERVO FEED LATCH ASM		133
-	-	1	1	2119955-2	ASSY, LUBRICATOR, END FEED		84
-	-	1	1	455888-6	SPACER, CRIMPER		82
-	-	1	1	2119956-2	DOCUMENTATION PACKAGE		71
-	-	2	2	2-18032-2	SCR, SET, FLT POINT M3 X 10.0		70
-	-	1	-	2119740-1	TAG, IDENTIFICATION		67
-	-	2	2	2168078-1	SCREW, DRIVE, RH, RoHS, 2 x .188		66
-	-	1	-	2119793-1	LIMITER, ADJUSTMENT BOLT		63
-	-	3	-	992763-5	SCR, SET, SOC, CONE POINT, M3 X 4.0		62
-	-	1	1	2079383-4	SCR, BHSC, RoHS (M4 X 8)		60
-	-	-	-	5-18022-5	SCR, HEX HD CAP, M4 X 6.0		59
-	-	-	-	2063961-1	FEED FINGER		58
-	-	4	4	2168400-4	SHCS, LOW HEAD, RoHS, M4 X 8		57
-	-	2	2	2168083-2	SCR, SKT HD CAP, RoHS, M4 X 8.0		56
-	-	2	2	5018030-2	NUT, HEX, REG, RoHS, M4		55
-	-	2	2	5018030-1	NUT, HEX, REG, RoHS, M3		54
-	-	2	2	986965-8	NUT, LOCK, HEX, TORQUE (M4)		53
-	-	-	-	2119792-2	PAWL, EF, AIR		51
-	-	-	-	18023-9	SCR, SKT HD CAP M4 X 6.0		49
-	-	-	-	2119652-1	FEED CAM, PRE FEED		48
-	-	-	-	2119653-1	FEED CAM, POST FEED		47
-	-	1	1	2119655-5	APPLICATOR BASIC ASSEMBLY, EF		46
-	-	1	-	2161310-1	RAM, STEPPED, AMP STYLE, END FEED		44
-	-	1	1	1-2079383-5	SCR, BHSC, RoHS (M8 X 40)		41
-	-	1	-	2119645-1	DISC, NUMBERED FA WIRE ADJUSTMENT		40
-	-	1	-	2119957-1	APPLICATOR SHIM PACK		39
-	-	1	1	2119644-1	RAM WASHER, PRECISION		38
-	-	1	1	2119085-1	FA HEAD, ATLANTIC STYLE		37
-	-	1	-	2119092-1	BOLT, ADJUSTMENT		35
-	-	8	8	1-18028-2	WASHER, FLAT, REG M4		33
-	-	2	2	2168083-8	SCR, SKT HD CAP, RoHS, M4 X 16		31
-	-	2	2	1-2168083-0	SCR, SKT HD CAP, RoHS, M4 X 10		29
-	-	1	1	240639-1	STRIPPER (MACHINING)		27
-	-	2	2	1320906-1	STUD, THREADED		25
-	-	1	1	1752371-5	PLATE, STRIP GUIDE		24
-	-	2	2	2-22281-3	SPRING, COMPRESSION		22
-	-	1	1	1752373-4	DRAG		20
-	-	2	2	1901259-5	GUIDE, LOWER STRIP		18
-	-	4	4	1-2079383-1	SCR, BHSC, RoHS (M6 X 12)		17
-	-	1	1	240644-1	PLATE, REAR SHEAR		11
-	-	-	-	-	-		10
-	-	1	1	690482-6	PLATE, FRONT SHEAR		9
-	-	1	1	2234631-3	ANVIL, COMBINATION		8
-	-	1	1	2217206-4	BLADE, SLUG		7
-	-	-	-	-	-		6
-	-	1	1	4-240641-8	SPACER		5
-	-	1	1	3-238009-6	BLOCK, FL CRIMPER SPACER		4
-	-	1	1	1-1803187-2	CRIMPER, INSULATION F		3
-	-	1	1	455888-7	SPACER, CRIMPER		2
-	-	1	1	1633893-4	CRIMPER, WIRE PREMIUM		1

DIMENSIONS: mm		TOLERANCES UNLESS OTHERWISE SPECIFIED:		OWN	DATE	 TE Connectivity Harrisburg, PA 17105-3608
0 PLC	±.5	1 PLC	±.13	B. WEAVER	13OCT2014	
2 PLC	±.013	3 PLC	±.013	G. BAILEY	13OCT2014	
4 PLC	±.0001	5 PLC	±.0001	G. BAILEY	13OCT2014	
ANGLES	±.0001	FINISH		PRODUCT SPEC		
MATERIAL		FINISH		APPLICATION SPEC		
WEIGHT		SCALE		RESTRICTED TO		
Customer Accessible Production Drawing		SCALE 1:1		SHEET 1 OF 4		

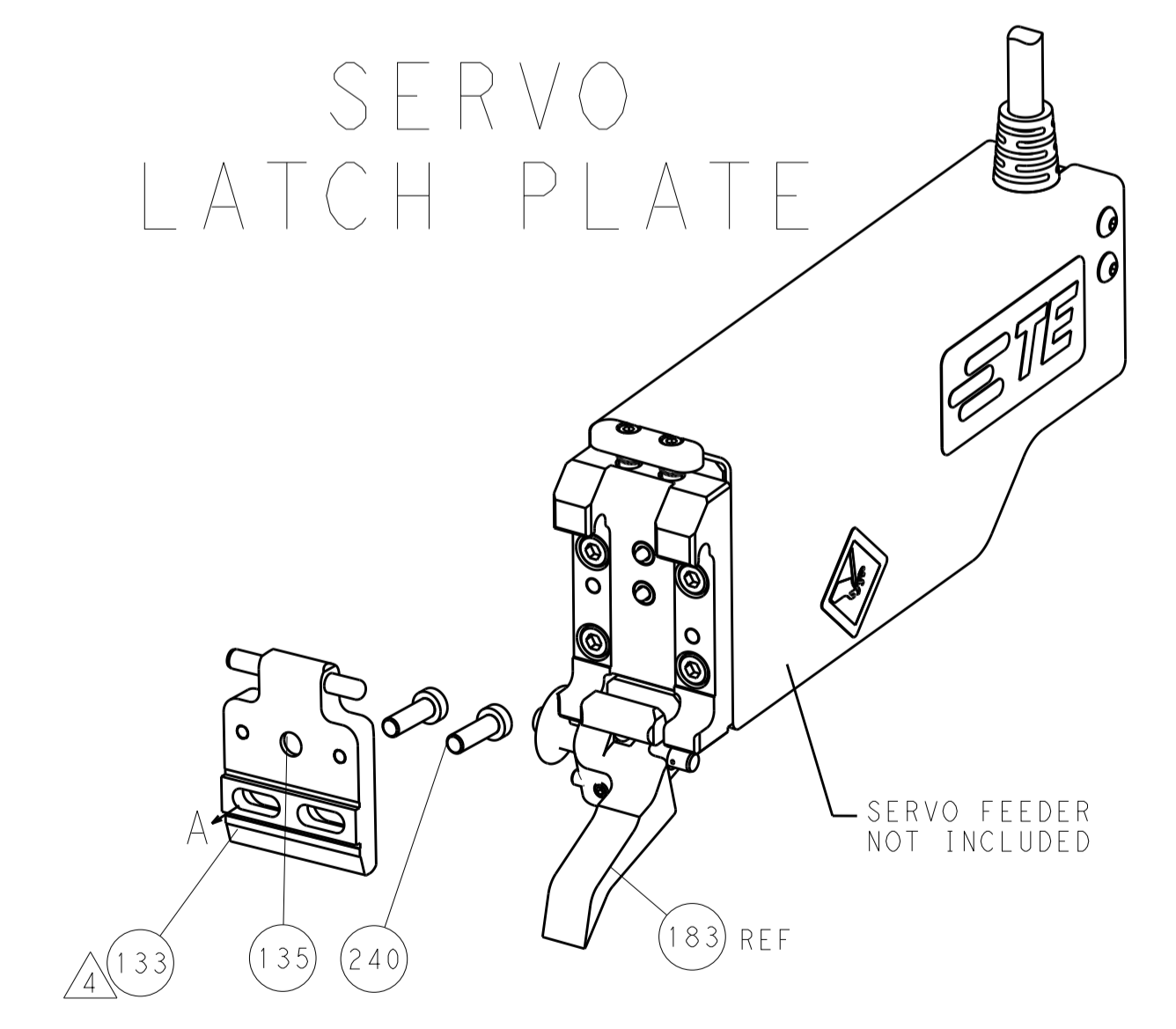
LOC	DIST	REV	DATE	BY	APPD
A	66				



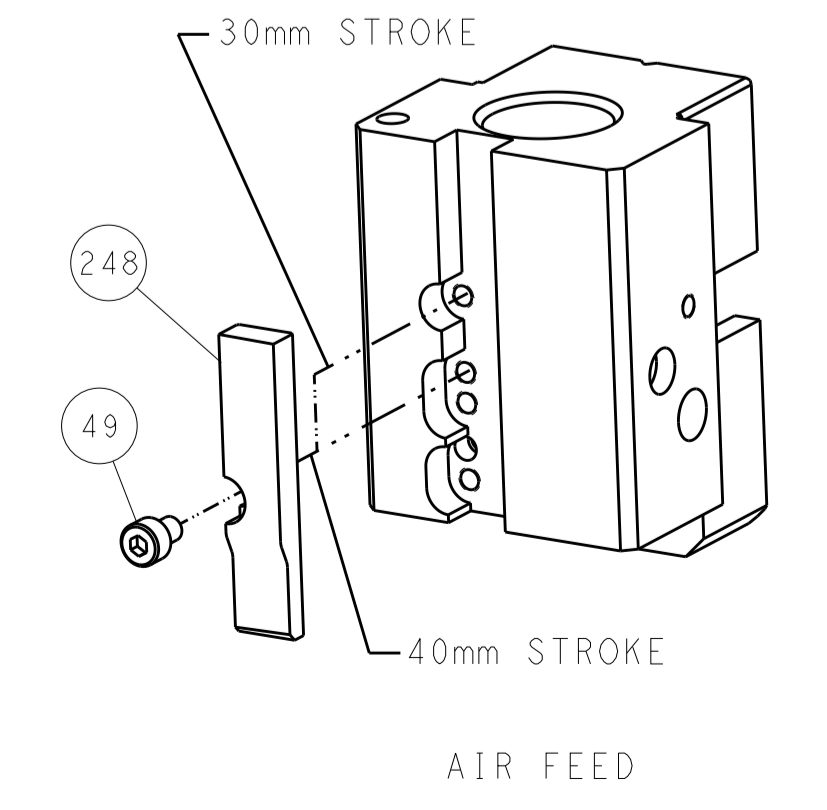
FEED TYPE
PNEUMATIC



SERVO
LATCH PLATE



CAM POSITION



ATLANTIC VERSION
 Shown on sheets 1 of 4 & 2 of 4
 (Pacific version shown on sheets 3 of 4 & 4 of 4)

<small>THIS DRAWING IS UNPUBLISHED. RELEASED FOR PUBLICATION 2014. IT IS THE PROPERTY OF TYCO ELECTRONICS CORPORATION AND IS TO BE USED ONLY FOR THE PURPOSES SPECIFIED. IT IS THE USER'S RESPONSIBILITY TO OBTAIN THE LATEST REVISIONS OF THIS DRAWING.</small>		DWN: B. WEAVER 13OCT2014 CHK: G. BAILEY 13OCT2014 APVD: G. BAILEY 13OCT2014	TE Connectivity Harrisburg, PA 17105-3608
DIMENSIONS: mm	TOLERANCES UNLESS OTHERWISE SPECIFIED: 0 PLC ±.5 1 PLC ±0.5 2 PLC ±0.13 3 PLC ±0.013 4 PLC ±0.001 ANGLES ±.1	NAME: Ocean End Feed Applicator PRODUCT SPEC: APPLICATION SPEC: SIZE: A1 CAGE CODE: 00779 DRAWING NO: C=2150466	RESTRICTED TO: Customer Accessible Production Drawing
MATERIAL:	FINISH:	WEIGHT:	SCALE: 1:1 SHEET 2 OF 4 REV C

PACIFIC VERSION TERMINATOR INTERFACE ADAPTER	PART NUMBER	REVISION	DESCRIPTION	FEED TYPE	APPLICATOR STYLE CONVERSION CHART					
					CONVERT TO	PART NUMBERS REQUIRED				
	2-2150466-2	C	FINE CRIMP HEIGHT ADJUST	PNEUMATIC	-	-	-	-	-	-
					SERVO LATCH PLATE	2119951-1	1901697-1	8-2150466-5	-	-
	2-2150466-5	C	FINE CRIMP HEIGHT ADJUST	SERVO LATCH PLATE ⁴	-	-	-	-	-	-
					PNEUMATIC FEED	2119950-1	2119792-2	-	2119641-2	-
2-2150466-7	C	FINE CRIMP HEIGHT ADJUST	NONE	-	-	-	-	-	-	
7-2150466-7	C	CRIMP TOOLING KIT	-	-	-	-	-	-	-	

APPLICATOR DATA		
CRIMP	SIZE	TYPE
WIRE	3.00 mm [.118]	F
INSUL	4.00 mm [.157]	F
APPL INSTRUCTIONS 408-10390		

TERMINAL DATA: SAMSUNG TERMINAL SAMSUNG CRIMP SPECIFICATION			
TERMINAL NAME: TERMINAL-RECEPTACLE(S48F)			
WIRE STRIP LENGTH ³		INSULATION DIAMETER RANGE ³	
TERMINAL APPLICATION SPECIFICATION	SAMSUNG TOOLING DRAWING L TYPE	-	-
TERMINALS APPLIED ¹⁰			
TE TERMINAL	SAMSUNG TERMINAL	TE TERMINAL	SAMSUNG TERMINAL
2113583-1	35454-8902	2113583-2	DB65-00307B

WIRE SIZE	CRIMP HEIGHT mm [INCH]	CRIMP HEIGHT REFERENCE SETTING
1.0mm + 1.1mm SOLID	1.84+/-0.04 [.072+/- .002]	6.0

- RECOMMENDED SPARE PARTS
- GREASE BEARING SURFACES LIGHTLY
- 3. LUBRICATE DAILY PER THE APPLICATOR INSTRUCTION SHEET SUPPLIED WITH THE APPLICATOR.
- ⁴ APPLICATOR SPECIFIC DATA TO BE ENTERED INTO BLANK MEMORY CHIP AT ASSEMBLY. SEE BELOW FOR PART NUMBER:
 PNEUMATIC FEED WITH "SMART APPLICATOR" CONVERSION: 8-2150466-4
 SERVO FEED WITH "FINE CRIMP HEIGHT ADJUST": 8-2150466-5
- 5. ADJUSTMENT OF THE STRIPPER MAY BE REQUIRED WHEN MOVING THE APPLICATOR BETWEEN BENCH AND LEADMAKER APPLICATIONS.
- ⁶ APPLY PART NUMBER 1-23419-5 LOCTITE TO THREADS OF ITEM 62.
 APPLY PART NUMBER 2-23419-6 LOCTITE TO THREADS OF ITEM 242.
- GREASE THREADS, GROOVE AND O-RING ON ITEMS 139 & 153.
- MAGNET, ITEM 166 MUST BE ORIENTED CORRECTLY IN ORDER TO PROPERLY ACTUATE THE COUNTER.
- ⁹ CRIMP HEIGHT REFERENCE SETTING WAS THE SETTING USED WHEN THE APPLICATOR WAS QUALIFIED AT THE FACTORY. ADJUSTMENT MAY BE NECESSARY WHEN RUNNING APPLICATOR IN THE FIELD.
- ¹⁰ TERMINAL PITCH NOT COMPATIBLE WITH MECHANICAL FEED.
- ¹¹ THE RECOMMENDED SET-UP FOR END FEED APPLICATORS IS POST-FEED WITH ITEM 2119653-1. THE APPLICATOR CAN BE CONFIGURED FOR PRE-FEED WITH ITEM 2119652-1 BUT MAY ENCOUNTER PROBLEMS WITH SOME APPLICATIONS. FEED ISSUES OR TERMINAL JAMMING MAY OCCUR IN THE PRE-FEED CONFIGURATION.
- ¹² CUT TO LENGTH AT ASSEMBLY.
- APPLICATOR APPLIES SOLID WIRE ONLY.
- TERMINAL LUBRICANT IS RECOMMENDED.

***WARNING**
 ON INSTALLATION, SET WIRE DISC, ITEM 40 TO LARGEST WIRE SIZE SETTING. USE OF SETTINGS BELOW MINIMUM REQUIRED CRIMP HEIGHT SETTING WILL CAUSE DAMAGE TO CRIMP TOOLING.

PACIFIC VERSION
 Shown on sheets 3 of 4 & 4 of 4
 (Atlantic version shown on sheets 1 of 4 & 2 of 4)

SET UP GAUGE	LOC	DIST	REVISIONS			
2119599-2	A	66	REV	DATE	BY	APPD
-	-	-	SEE SHEET 1	-	-	-

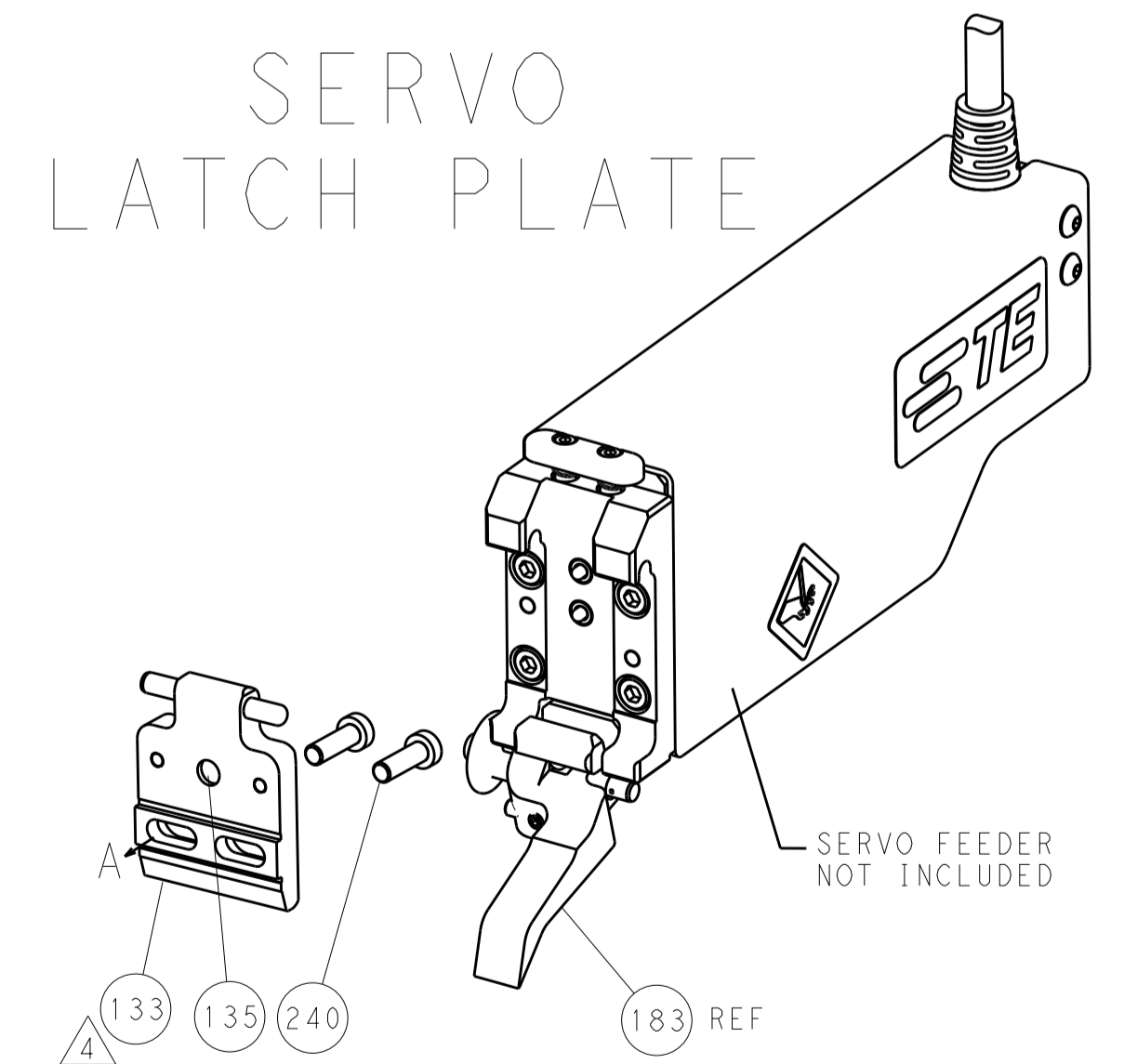
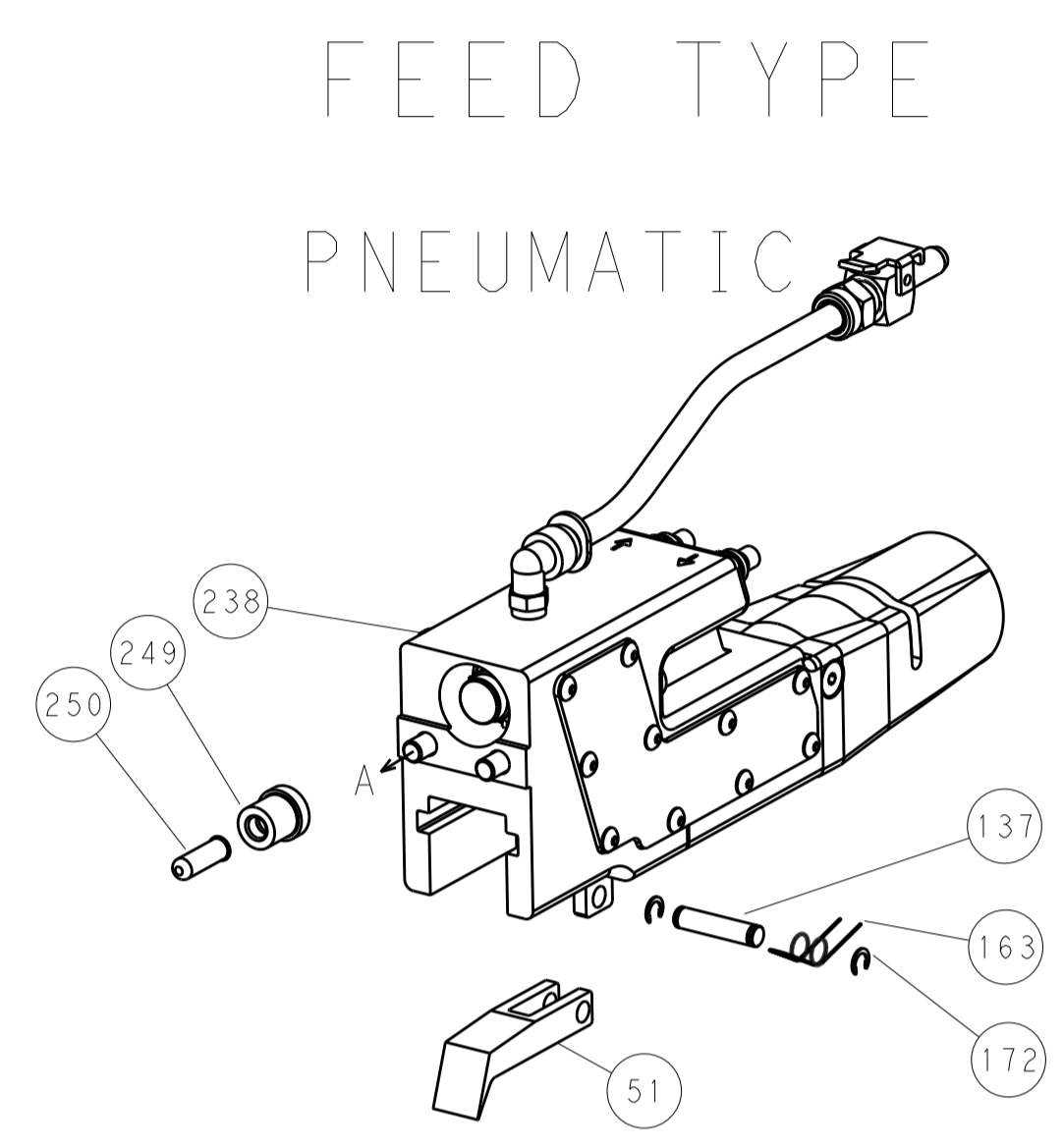
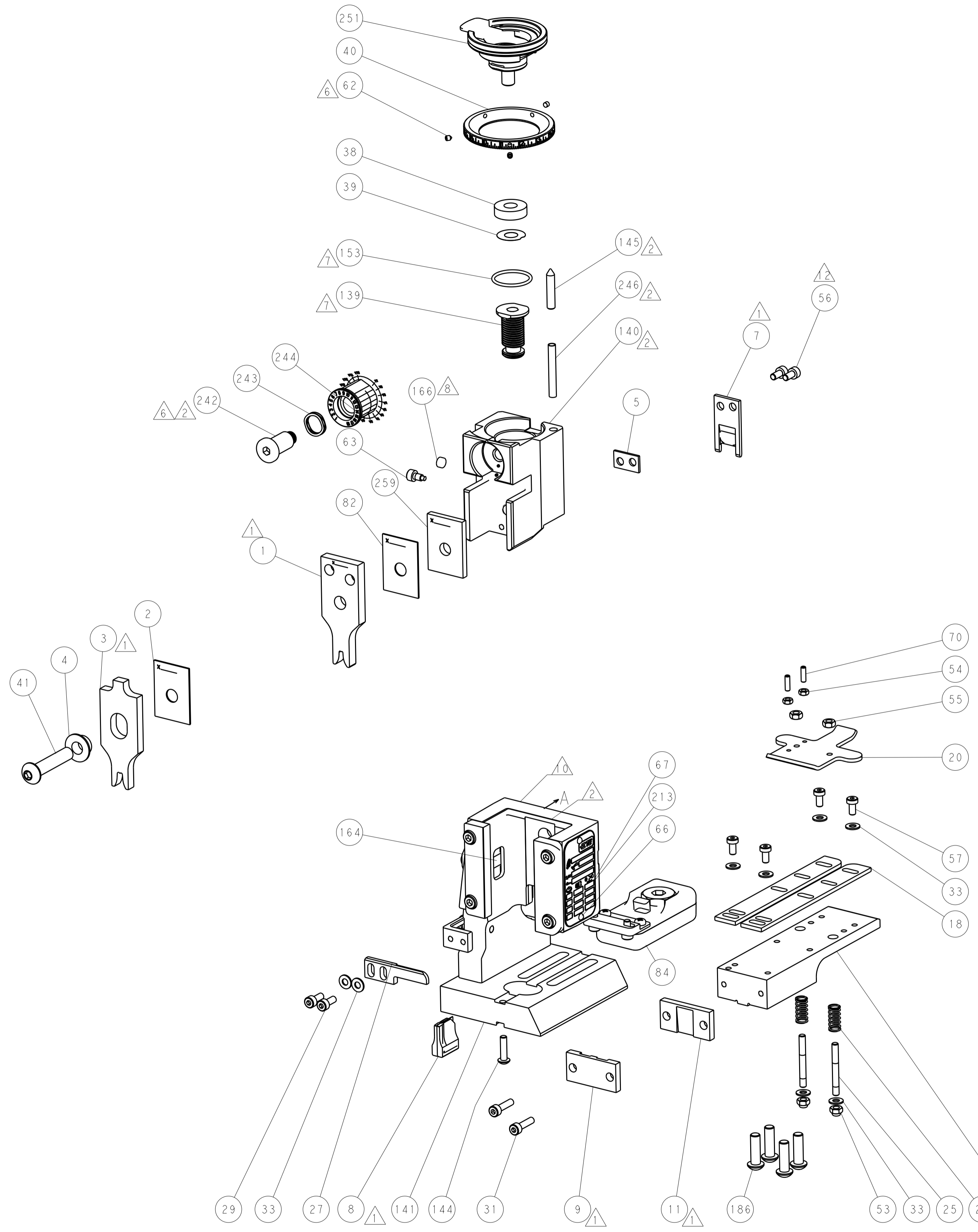
-	1	1	1	1803078-3	SPACER, PRECISION	259
-	1	1	1	2119782-1	FINE ADJUST HEAD ASM, PACIFIC STYLE	251
-	-	-	1	2119640-1	PUSH ROD, AIR FEED	250
-	-	-	1	2079988-1	BUSHING, LCH5-12, MISUMI	249
-	1	1	1	1-22279-3	SPRING, COMPRESSION	246
-	1	1	1	2119082-8	CAM, SNAIL, INSULATION ADJUSTMENT	244
-	1	1	1	2079764-1	WASHER, WAVE SPRING, CREST-TO-CREST	243
⁶	-	1	1	2119083-1	RETAINER, INSULATION DIAL	242
-	-	2	-	2168400-7	SHCS, LOW HEAD, RoHS, M5 X 10	240
-	-	-	-	2119580-1	MECHANICAL FEED ASSEMBLY	239
-	-	-	1	2063440-2	AIR FEED MODULE	238
-	-	1	-	2119740-2	TAG, IDENTIFICATION	213
-	4	4	4	2079383-9	SCR, BHSC, RoHS (M6 X 20)	186
-	-	REF	-	1901697-1	FEED FINGER ASSEMBLY, EF	183
-	-	-	2	21045-3	RING, RETAIN, EXTERN, 3/16 CRESCENT	172
-	1	1	1	994969-1	MAGNET, RARE EARTH HIGH ENERGY	166
-	REF	REF	REF	994970-2	COUNTER, MAGNETIC	164
-	-	-	1	240638-1	SPRING, FEED FINGER	163
-	1	1	1	8-21084-1	O-RING, .801 ID, .070 DIA. MAT.	153
-	-	-	1	2119641-2	FEED CAM, AIR FEED	152
-	1	1	1	2119798-2	DETENT PIN	145
-	1	1	1	2079383-8	SCR, BHSC, RoHS (M4 X 16)	144
-	-	-	-	2119653-2	FEED CAM, POST FEED	142
-	1	1	1	2119655-6	APPLICATOR BASIC ASSEMBLY, EF	141
-	1	1	1	2161313-1	RAM, STEPPED, ASIAN STYLE, END FEED	140
-	1	1	1	2119092-2	BOLT, ADJUSTMENT	139
-	-	-	1	3-23627-7	PIN, RETAIN, GRVD, 3/16 X .854	137
-	-	REF	-	SEE NOTE 4	MEMORY CHIP, PROGRAMMED	135
-	-	1	-	1633743-1	SERVO FEED LATCH ASM	133
-	1	1	1	2119955-2	ASSY, LUBRICATOR, END FEED	84
-	1	1	1	455888-6	SPACER, CRIMPER	82
-	1	1	1	2119956-2	DOCUMENTATION PACKAGE	71
-	2	2	2	2-18032-2	SCR, SET, FLT POINT M3 X 10.0	70
-	1	-	1	2119740-1	TAG, IDENTIFICATION	67
-	2	2	2	2168078-1	SCREW, DRIVE, RH, RoHS, 2 x .188	66
-	1	1	1	2119793-1	LIMITER, ADJUSTMENT BOLT	63
⁶	-	3	3	992763-5	SCR, SET, SOC, CONE POINT, M3 x 4.0	62
-	-	-	-	5-18022-5	SCR, HEX HD CAP, M4 X 6.0	59
-	-	-	-	2063961-1	FEED FINGER	58
-	4	4	4	2168400-4	SHCS, LOW HEAD, RoHS, M4 X 8	57
¹²	-	2	2	2168083-2	SCR, SKT HD CAP, RoHS, M4 X 8.0	56
-	-	2	2	5018030-2	NUT, HEX, REG, RoHS, M4	55
-	-	2	2	5018030-1	NUT, HEX, REG, RoHS, M3	54
-	-	2	2	986965-8	NUT, LOCK, HEX, TORQUE (M4)	53
-	-	-	1	2119792-2	PAWL, EF, AIR	51
-	-	-	1	18023-9	SCR, SKT HD CAP M4 X 6.0	49
-	-	-	-	2119652-1	FEED CAM, PRE FEED	48
-	1	1	1	1-2079383-5	SCR, BHSC, RoHS (M8 X 40)	41
-	1	1	1	2119645-1	DISC, NUMBERED FA WIRE ADJUSTMENT	40
-	1	1	1	2119957-1	APPLICATOR SHIM PACK	39
-	1	1	1	2119644-1	RAM WASHER, PRECISION	38
-	8	8	8	1-18028-2	WASHER, FLAT, REG M4	33
-	2	2	2	2168083-8	SCR, SKT HD CAP, RoHS, M4 X 16	31
-	2	2	2	1-2168083-0	SCR, SKT HD CAP, RoHS, M4 X 10	29
-	1	1	1	240639-1	STRIPPER (MACHINING)	27
-	2	2	2	1320906-1	STUD, THREADED	25
-	1	1	1	1752371-5	PLATE, STRIP GUIDE	24
-	2	2	2	2-22281-3	SPRING, COMPRESSION	22
-	1	1	1	1752373-4	DRAG	20
-	2	2	2	1901259-5	GUIDE, LOWER STRIP	18
¹	-	1	1	240644-1	PLATE, REAR SHEAR	11
-	-	-	-	-	-	10
¹	-	1	1	690482-6	PLATE, FRONT SHEAR	9
¹	1	1	1	2234631-3	ANVIL, COMBINATION	8
¹	-	1	1	2217206-4	BLADE, SLUG	7
-	-	-	-	-	-	6
-	1	1	1	4-240641-8	SPACER	5
-	1	1	1	3-238009-6	BLOCK, FL CRIMPER SPACER	4
¹	1	1	1	1-1803187-2	CRIMPER, INSULATION F	3
¹	-	1	1	455888-7	SPACER, CRIMPER	2
¹	1	1	1	1633893-4	CRIMPER, WIRE PREMIUM	1

DIMENSIONS:		TOLERANCES UNLESS OTHERWISE SPECIFIED:		DWG		CHK		APVD		DATE	
mm	0 PLC ±.5	1 PLC ±.3	2 PLC ±.13	3 PLC ±.013	4 PLC ±.0001	ANGLES	FINISH	13OCT2014	13OCT2014	13OCT2014	13OCT2014
MATERIAL				FINISH				WEIGHT			
-				-				-			

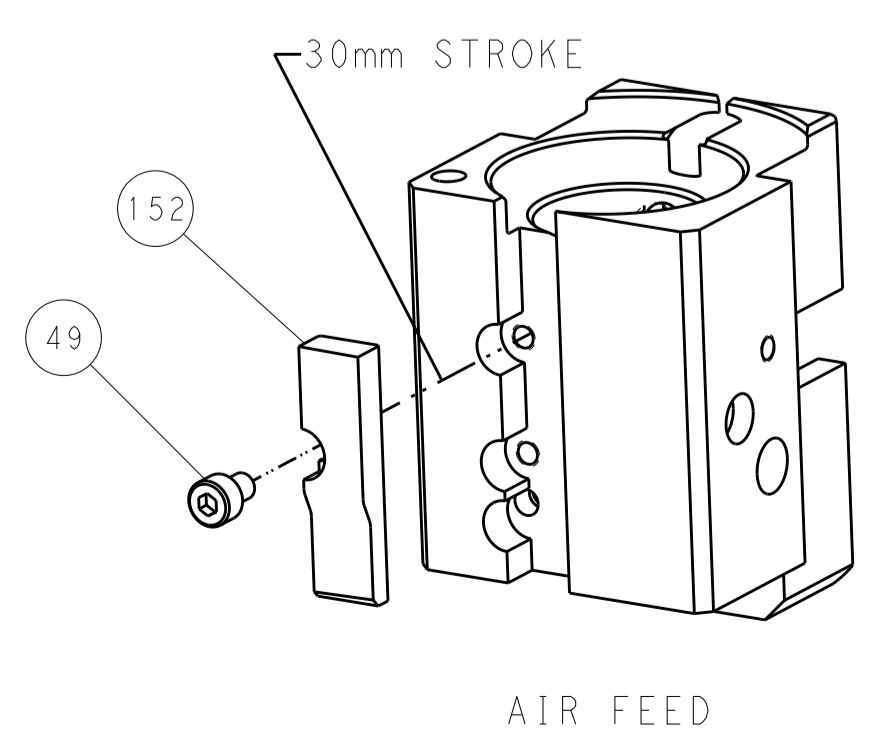
Customer Accessible Production Drawing	SCALE	1:1	SHEET	3	OF	4	REV	C
--	-------	-----	-------	---	----	---	-----	---

LOC	DIST	REV	DATE	BY	APPV
A	66				

REVISIONS			
NO.	DESCRIPTION	DATE	BY
-	SEE SHEET 1	-	-



CAM POSITION



PACIFIC VERSION
 Shown on sheets 3 of 4 & 4 of 4
 (Atlantic version shown on sheets 1 of 4 & 2 of 4)

DIMENSIONS: mm		TOLERANCES UNLESS OTHERWISE SPECIFIED: 0 PLC ±.5 1 PLC ±0.5 2 PLC ±0.13 3 PLC ±0.013 4 PLC ±0.001 ANGLES ±.1		DWN B. WEAVER 13OCT2014 CHK G. BAILEY 13OCT2014 APVD G. BAILEY 13OCT2014		NAME Ocean End Feed Applicator	
MATERIAL:		FINISH:		WEIGHT:		SIZE: CAGE CODE DRAWING NO. RESTRICTED TO A1 00779 ©=2150466	
Customer Accessible Production Drawing				SCALE: 1:1		SHEET 4 OF 4 REV C	